

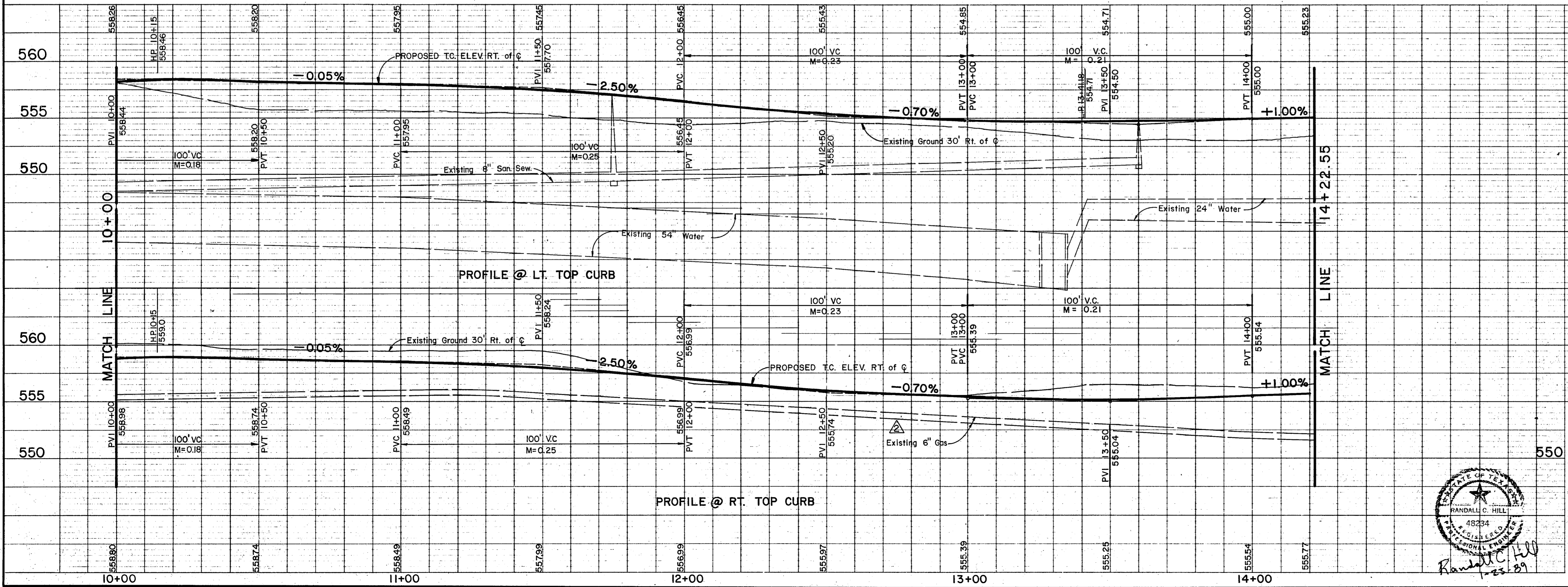
CAUTION!
 Underground Gas Main In This Area.
 Contact Lone Star Gas Company 2
 Working Days Prior To Construction.
 Call MR. Leon Weatherford At
 276-1171

B.M. "□" CUT ON HEADWALL, EAST SIDE OF WINNWOOD, 180' SOUTH OF E. BELT LINE ROAD. ELEV. 555.79 (M.S.L.)

STEWART H. BEATTY

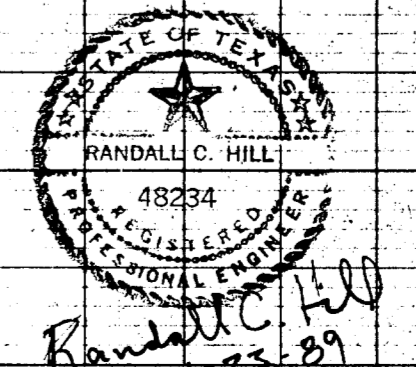
GERALD W. JOHNSON

T.J. ELLIOTT



PHASE II

RECORDED DRAWING



Added 6" Gas to Profile		TEG	12-12-85
Relocate 10" Mod. Rec. Inlet from Sta. 13+46 to Sta. 13+41.18.		JK	12-6-85
No.	Revision	By	Date
TOWN OF ADDISON DALLAS COUNTY, TEXAS WINNWOOD/CELESTIAL RD. IMPROVEMENTS PAVING PLAN AND PROFILE STA. 10+00 to STA. 14+22.55 GINN, INC. Consulting Engineers Dallas, Texas			
Designed - GF/JK	Drawn - ALA	Date - OCT., 1985	Job No. - 265
Approved - HWG	Checked - JCK	Scale - 1" = 20' H / 1" = 5' V.	Sheet 5 of 29