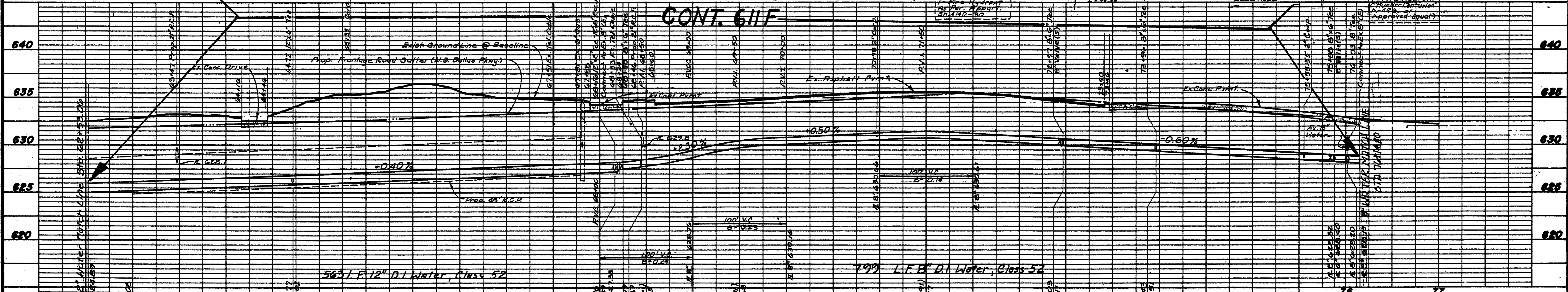
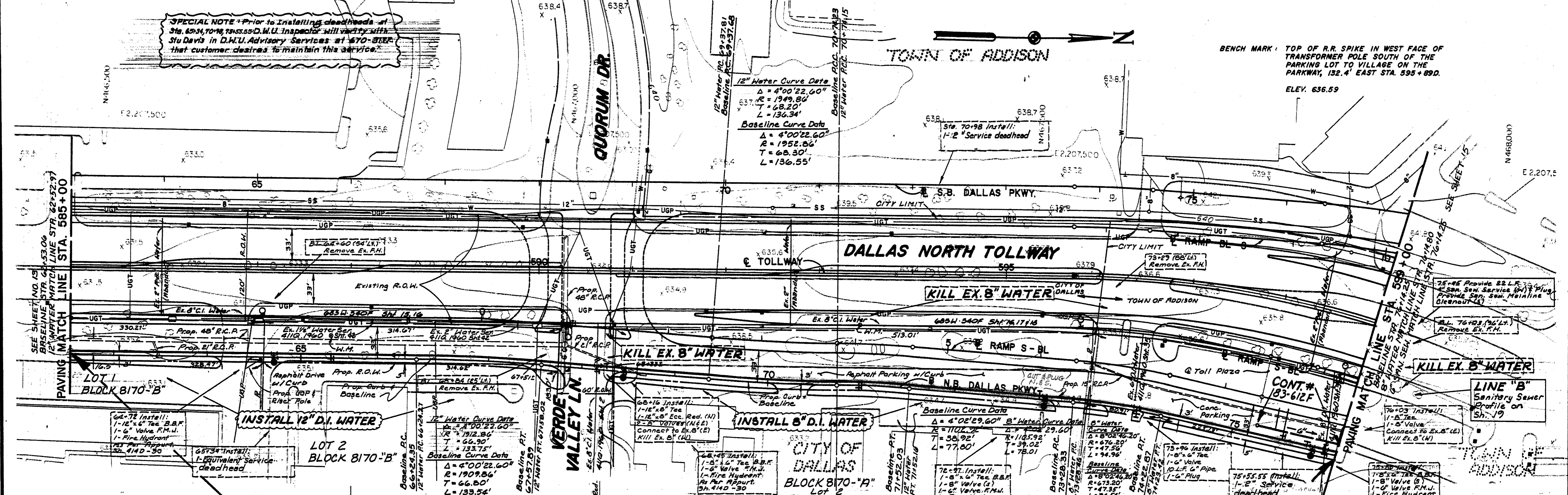


**SPECIAL NOTE:** Prior to installing deadheads at Sta. 6334, 70+98, 75+55 D.W.U. Inspector will verify with Stu Davis in D.W.U. Advisory Services at 670-3182 that customer desires to maintain this service.

TOWN OF ADDISON

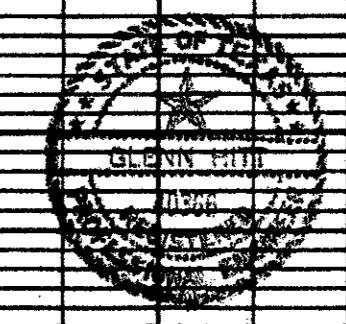
BENCH MARK: TOP OF R.R. SPIKE IN WEST FACE OF TRANSFORMER POLE SOUTH OF THE PARKING LOT TO VILLAGE ON THE PARKWAY, 132.4' EAST STA. 595+89.0.  
ELEV. 636.59



**WATER METERS**  
11.65.94 (231.5) Underdrained  
10.70.93 (162.7) 2' Ferrule

**NOTES:**  
1. ALL WATER MAINS SHALL BE DUCKIE 1000 CLASS OR HUNY REINFORCED PIPE ON PIPE AND RINGS

Designed by: *Turner Collie & Braden, Inc.* Date: 7-8-83  
TURNER COLLIE & BRADEN, INC.  
Design Approved, Engineer: *James K. Madhokar*  
J.W.U. ROW Approval: \_\_\_\_\_  
D.W.U. Contract No. 83-61F, 83-61F



NO.	REVISION	BY	DATE
76			
77			

TEXAS TURNPIKE AUTHORITY  
**DALLAS NORTH TOLLWAY**  
WATER & SANITARY SEWER RELOCATIONS  
PAVING STA. 585+00 TO STA. 599+00  
DALLAS WATER UTILITIES  
CITY OF DALLAS, TEXAS

Turner Collie & Braden Inc. SECTION II  
Consulting Engineers

DESIGN	DRAWN	DATE	SCALE	NOTES	FILE	NO.
J.G.H.	T.C.BB.	JUNE 1983	1" = 50'H 1" = 5'V	T.C.BB. INC.	411-Q	1909A