

- GENERAL NOTES**
- All water mains shall be ductile iron class 51 water pipe.
  - Alt. All 6" & 8" water mains shall be PVC class 200 water pipe. (Except in all major, secondary thoroughfares, & fill areas).  
Note: P.V.C. water pipe-on services 1" and larger, tapping saddles will be used.
  - All water mains shall have a minimum cover below finished grades as follows: 6" & 8" - 48"  
Or as required to clear other utilities.
  - All water services shall be 2" copper and located as shown, except as noted.
  - All sanitary sewer laterals shall be 6" and located as shown.
  - Due to soil resistivity readings of less than 2000 OHMS per C.C. All D. I. water pipe shall have 8 Mil. thickness polyethylene tube wrap.
  - Sidewalks shall be 5 feet wide, adjacent to the curb line except as shown.
  - Water and sanitary sewer easements shall also include additional area of working space for construction and maintenance of the systems. Additional easement area is also conveyed for installation and maintenance of manholes, cleanouts, fire hydrants, services, operation of the systems. (Also, must be shown on final plat or easement).
  - Extend Water services and sewer laterals 2 feet beyond proposed curbs, except as noted.
  - Fire Hydrants to be Mueller Centurion

**TREE TIE LIST FOR SANITARY SEWER LINE "A-2"**  
(Ties from Centerline and along Stationing of said line A-2)

0 + 86	7.8' Rt.	10" Pecan
1 + 45	1.5' Rt.	8" Bois-d-Arc
1 + 53	Centerline	14" Pecan
1 + 77	0.4' Rt.	6" Pecan
1 + 89	3.0' Lt.	6" Pecan
2 + 04	6.0' Lt.	24" Hack
2 + 08	8.6' Lt.	8" Hack
2 + 13	7.7' Lt.	8" Hack
2 + 21	0.5' Lt.	10" Hack
2 + 21	3.0' Rt.	6" Pecan
2 + 35	3.5' Lt.	8" Hack
2 + 51	3.5' Lt.	14" Bois-d-Arc
2 + 71	2.0' Lt.	14" Bois-d-Arc
2 + 79	9.0' Lt.	12" Hack
6 + 03	1.5' Rt.	12" Hack
5 + 66	1.3' Rt.	Old telephone pole not in use
7 + 41	10.0' Lt.	20" Hack
7 + 46	5.0' Lt.	22" Hack

**OAKS NORTH ADDITION RETAIL TWO**  
 Designed by: *John C. Gibson Co. Inc.* Date: *11/8/79*  
 John C. Gibson Co. Inc. - Consulting Engineers  
 Subject to Letter 15-79-78  
 R.O.W. Approved: *John C. Gibson* Date: *2-26-79*  
 Engineer of Design - Water Utilities Dept.  
 Contract No.: 78-397-P-78-400-P-Tex-Con-11Dec-78

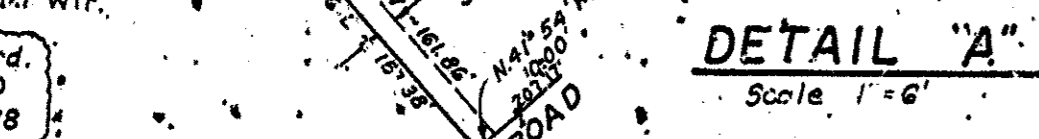
**NOTES:**  
 Contractor to contact all utility companies to verify and locate any and all utilities prior to beginning of construction.  
 No trees to be cut except as directed by owner.  
 Contractor to verify location of proposed transformer pads prior to start of construction. No water and sanitary sewer mains, storm drainage mains or laterals, water services or sanitary sewer laterals to be constructed under transformer pad locations.

**DO NOT PULL PVC PIPE @ JOINTS.**  
**OAKS NORTH ADDITION RETAIL ONE**  
 Designed by: *John C. Gibson Co. Inc.* Date: *1/9/79*  
 John C. Gibson Co. Inc. - Consulting Engineers  
 R.O.W. Approved: *J.L. Teale* Date: *1-11-79*  
 Engineer of Design - Water Utilities Dept.  
 Contract No.: 78-397-P-78-318-P-Tex-Con-11-12-21-78

**SANITARY SEWER CURVE DATA**

NO	F	E	NO	F	E
A	10° 28' 31"	170.00'	A	25° 35' 19"	175.30'
B	18.33'	62.48'	B	23.00'	23.95'
C	36.56'	122.82'	C	23.25'	71.76'
D	0.14324'	0.10417'	D	28.6479'	28.6479'
E	27° 30'	197.00'	E	23° 25'	200.00'
F	22° 07'	115.00'	F	15.08'	115.08'
G	34° 01'	23.95'	G	81.74'	81.74'
H	13° 15' 41"	200.00'	H	28.6479'	28.6479'
I	23° 25'	71.76'	I	0.14324'	0.14324'
J	44.29'	122.82'	J	16.20'	16.20'
K	28.6479'	28.6479'	K	30.79'	30.79'
L	0.14324'	0.14324'	L	61.16'	61.16'
M	17° 35'	161.20'	M	17° 30' 29"	161.20'
N	189.08'	200.00'	N	0.14324'	0.14324'
O	30.79'	30.79'	O		
P	61.16'	61.16'	P		
Q	17° 30' 29"	161.20'	Q		
R	0.14324'	0.14324'	R		

**APPROVAL NOTE FOR CHANGING WATER SERVICES FROM 3/4" TO 1" IN OAKS NORTH ADDITION**  
 Designed by: *John C. Gibson Co. Inc.* Date: *1/30/79*  
 John C. Gibson Co. Inc. - Consulting Engineers  
 R.O.W. Approved: *John C. Gibson* Date: *1-30-79*  
 Engineer of Design - Water Utilities Dept.  
 Contract No.: 78-401-P-78-402-P-Tex-Con-11Dec-78



**WATER & SEWER PLAN**  
**OAKS NORTH ADDITION**  
**DALLAS, TEXAS**  
 John C. Gibson Co. Inc. Consulting Engineers  
 9510 Military Parkway Dallas, Texas 75227

DESIGN	DRAWN	DATE	SCALE	NOTES	FILE	NO.
A.D.M.	G.M.	1/9/79	1" = 100'	DB	411Q	1960

WATER & SEWER PLAN #347

