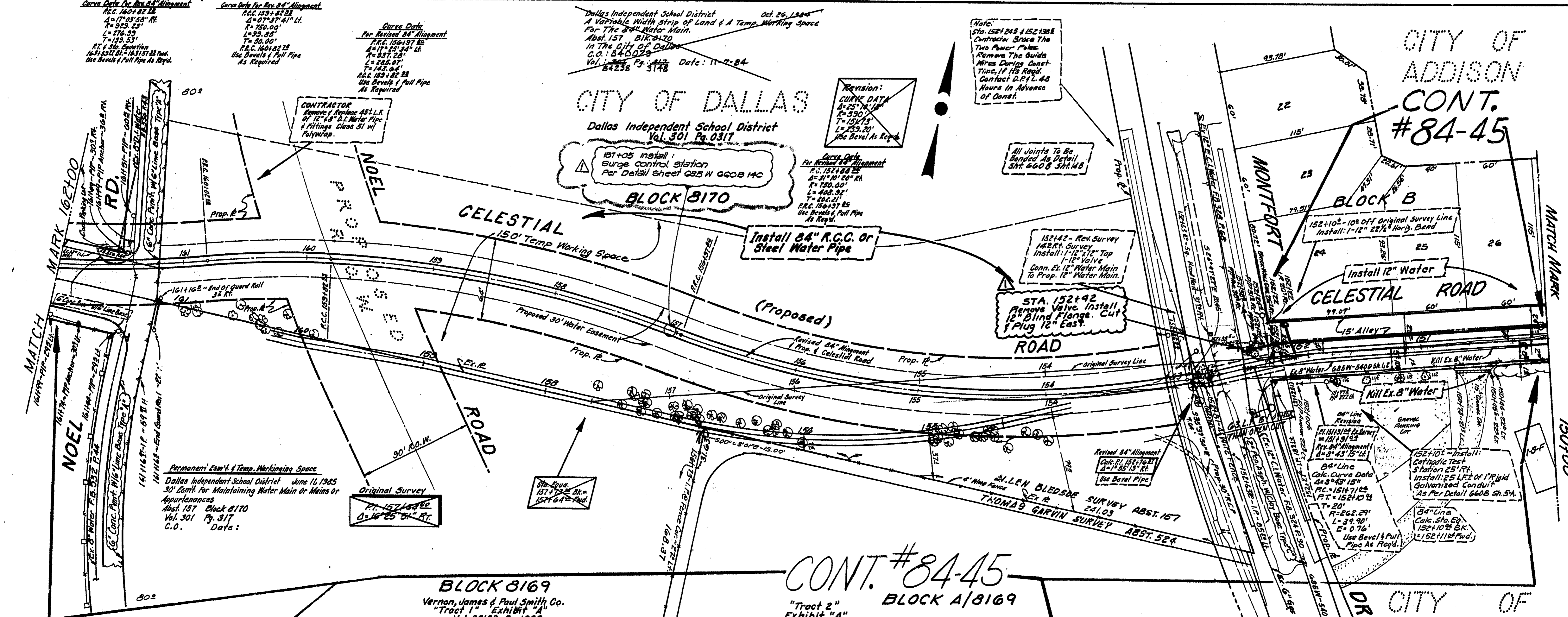


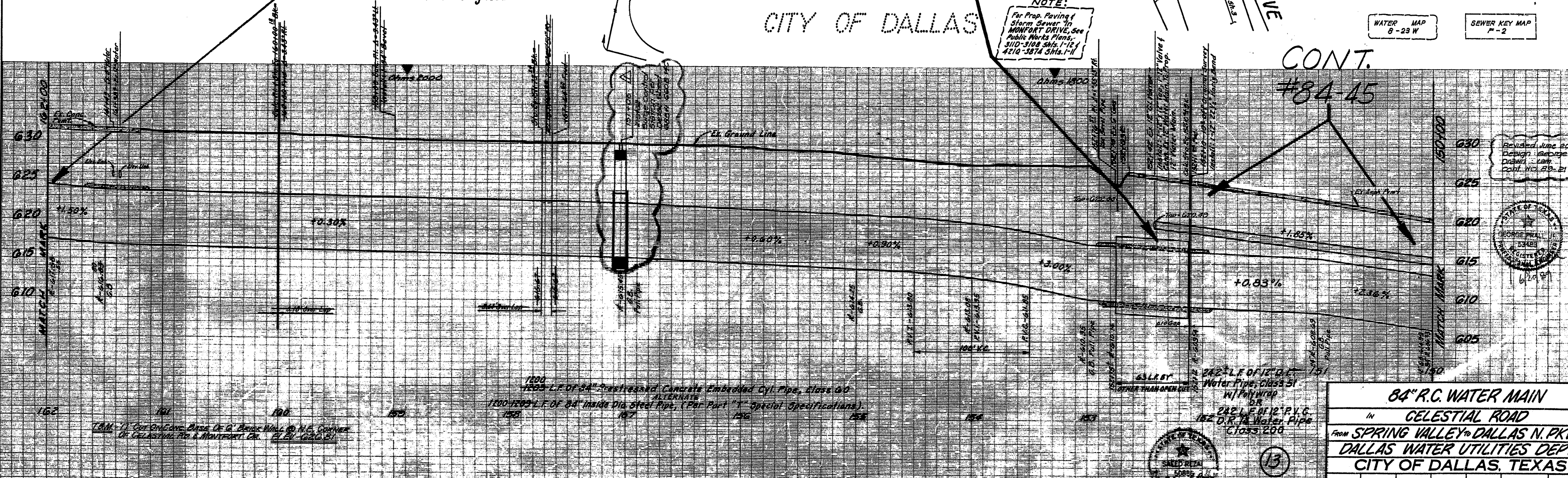
CITY OF ADDISON CONT. #84-45

TREE LIST	
Sta.	Description
152779	10' Bois D'Arc
152812	10' Bois D'Arc
152813	10' Cluster Hackberry
152814	5' Hackberry
152815	5' Hackberry
152816	5' Hackberry
152817	5' Hackberry
152818	5' Hackberry
152819	5' Hackberry
152820	5' Hackberry
152821	5' Hackberry
152822	5' Hackberry
152823	5' Hackberry
152824	5' Hackberry
152825	5' Hackberry
152826	5' Hackberry
152827	5' Hackberry
152828	5' Hackberry
152829	5' Hackberry
152830	5' Hackberry
152831	5' Hackberry
152832	5' Hackberry
152833	5' Hackberry
152834	5' Hackberry
152835	5' Hackberry
152836	5' Hackberry
152837	5' Hackberry
152838	5' Hackberry
152839	5' Hackberry
152840	5' Hackberry
152841	5' Hackberry
152842	5' Hackberry
152843	5' Hackberry
152844	5' Hackberry
152845	5' Hackberry
152846	5' Hackberry
152847	5' Hackberry
152848	5' Hackberry
152849	5' Hackberry
152850	5' Hackberry
152851	5' Hackberry
152852	5' Hackberry
152853	5' Hackberry
152854	5' Hackberry
152855	5' Hackberry
152856	5' Hackberry
152857	5' Hackberry
152858	5' Hackberry
152859	5' Hackberry
152860	5' Hackberry
152861	5' Hackberry
152862	5' Hackberry
152863	5' Hackberry
152864	5' Hackberry
152865	5' Hackberry
152866	5' Hackberry
152867	5' Hackberry
152868	5' Hackberry
152869	5' Hackberry
152870	5' Hackberry
152871	5' Hackberry
152872	5' Hackberry
152873	5' Hackberry
152874	5' Hackberry
152875	5' Hackberry
152876	5' Hackberry
152877	5' Hackberry
152878	5' Hackberry
152879	5' Hackberry
152880	5' Hackberry
152881	5' Hackberry
152882	5' Hackberry
152883	5' Hackberry
152884	5' Hackberry
152885	5' Hackberry
152886	5' Hackberry
152887	5' Hackberry
152888	5' Hackberry
152889	5' Hackberry
152890	5' Hackberry
152891	5' Hackberry
152892	5' Hackberry
152893	5' Hackberry
152894	5' Hackberry
152895	5' Hackberry
152896	5' Hackberry
152897	5' Hackberry
152898	5' Hackberry
152899	5' Hackberry
152900	5' Hackberry



NOTE:
For Prop. Paving & Storm Sewer in MONTFORT DRIVE, see Public Works Plans, 310-318 Sh. 1-12 4210-3874 Sh. 1-11

CONT. #84-45 BLOCK A/8169 "Tract 2" Exhibit "A"



Revised June 20, 1988
Design: George Pratt
Drawn: LAM
Plant: No. 89-217



84" R.C. WATER MAIN
IN CELESTIAL ROAD
FROM SPRING VALLEY TO DALLAS N. PKWY.
DALLAS WATER UTILITIES DEPT.
CITY OF DALLAS, TEXAS

DESIGN	DRAWN	DATE	SCALE	NOTES	FILE	NO.
S. PEREZ	S. PEREZ	Jan. 84	1/4" = 1'-0"		GG5W	GG08

