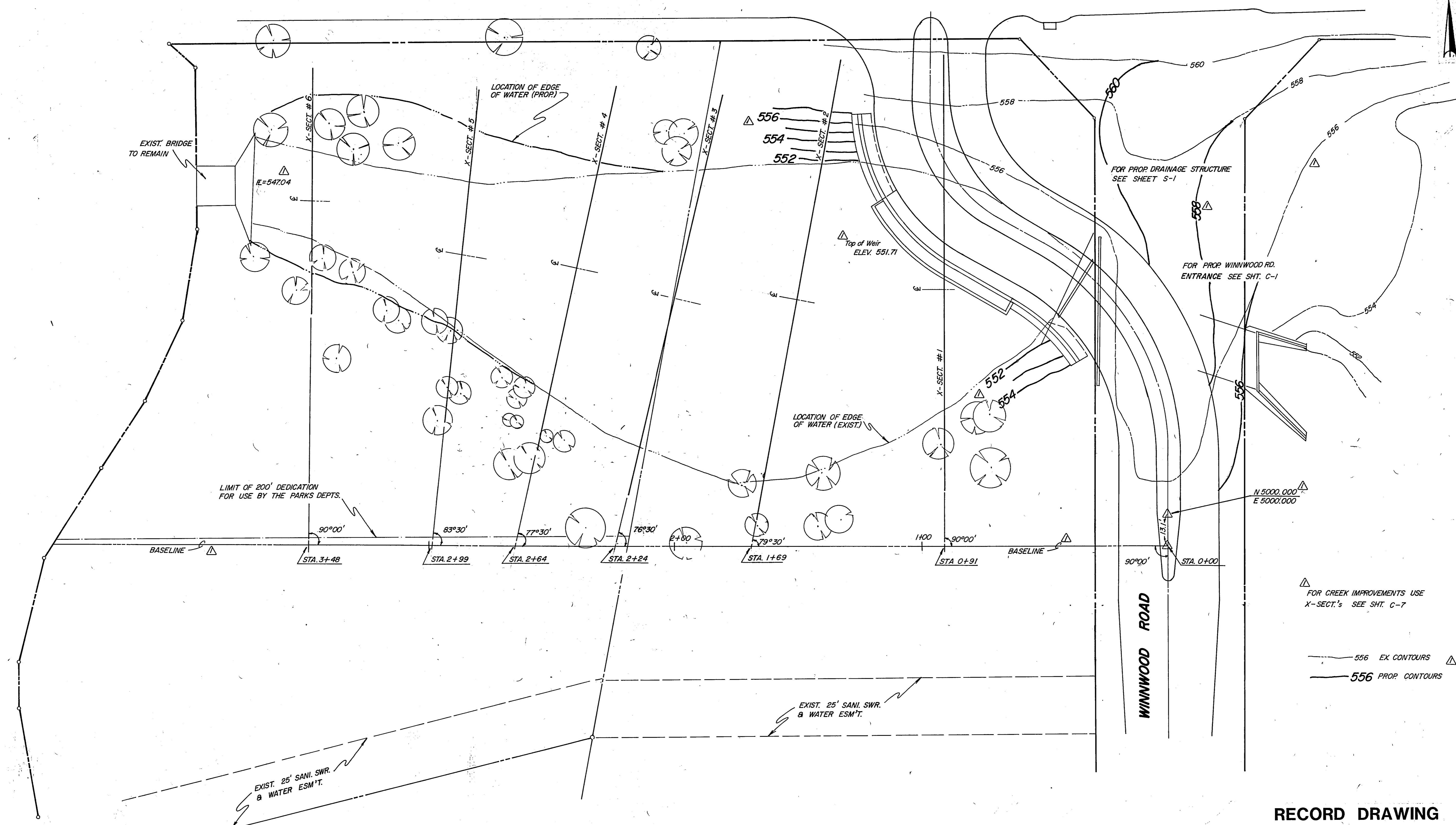


BELTLINE ROAD



EXIST. BRIDGE TO REMAIN

E=547.04

LOCATION OF EDGE OF WATER (PROP.)

556
554
552

FOR PROP. DRAINAGE STRUCTURE SEE SHEET S-1

FOR PROP. WINNWOOD RD. ENTRANCE SEE SHT. C-1

LOCATION OF EDGE OF WATER (EXIST.)

LIMIT OF 200' DEDICATION FOR USE BY THE PARKS DEPTS.

N 5000.000
E 5000.000

BASELINE

STA. 3+48

STA. 2+99

STA. 2+64

STA. 2+24

STA. 1+69

STA. 0+91

BASELINE

STA. 0+00

FOR CREEK IMPROVEMENTS USE X-SECT.'s SEE SHT. C-7

556 EX CONTOURS
556 PROP CONTOURS

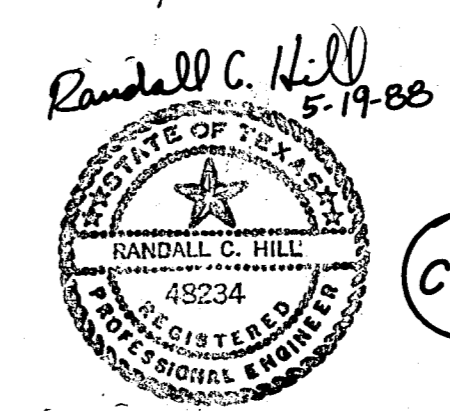
EXIST. 25' SANI. SWR. & WATER ESM'T.

EXIST. 25' SANI. SWR. & WATER ESM'T.

WINNWOOD ROAD

RECORD DRAWING

No.	ADDED BASELINE w/ STA.'s, NOTES, & EX. & PROP. CONTOURS	R.L.O.	6-6-88
Revision		By	Date
TOWN OF ADDISON DALLAS COUNTY, TEXAS WINNWOOD CELESTIAL PHASE III			
CREEK RENOVATION PLAN			
GINN, INC. Consulting Engineers Dallas, Texas			
Designed - RCH	Drawn - RLO	Date - March, 1988	Job No. - 328
Approved - HWG	Checked - RCH	Scale - 1"=20'	Sheet 6 of 13



C-6