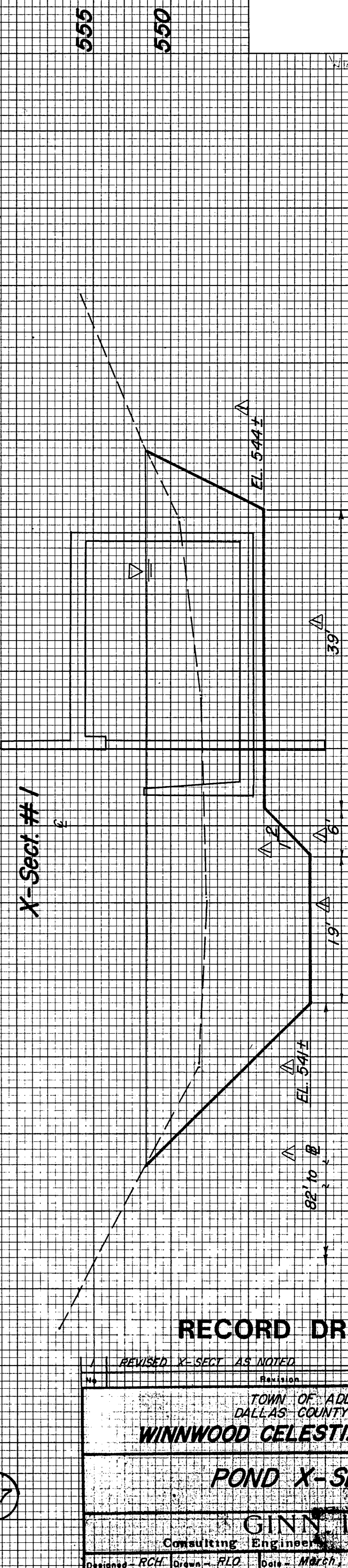
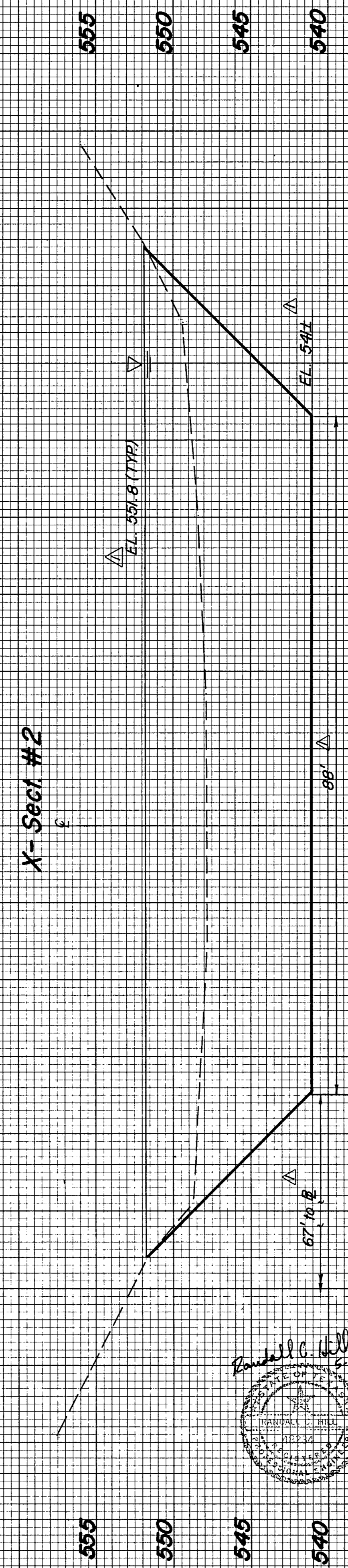
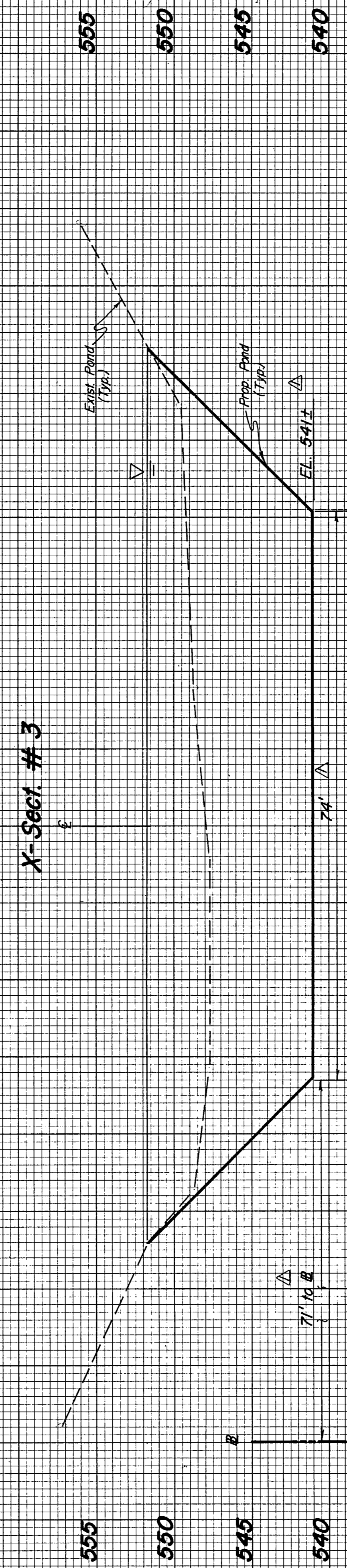
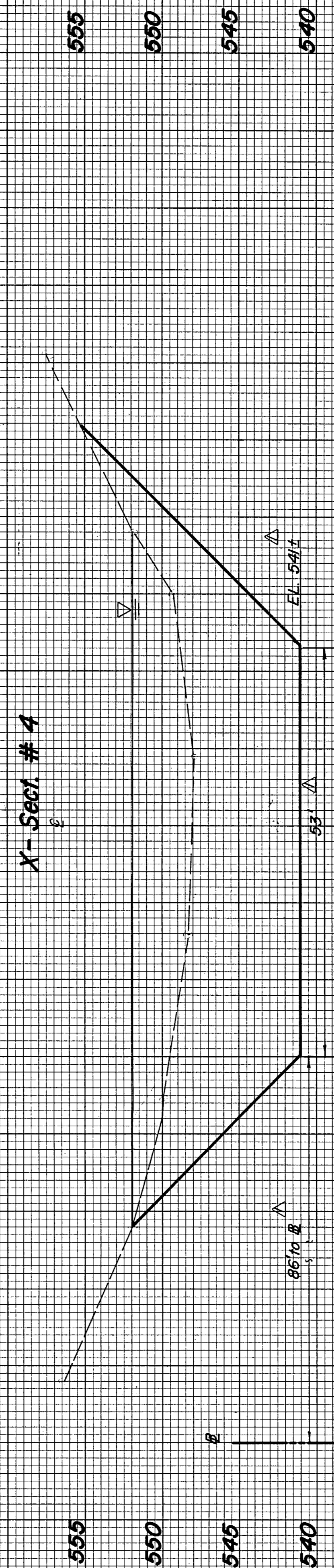
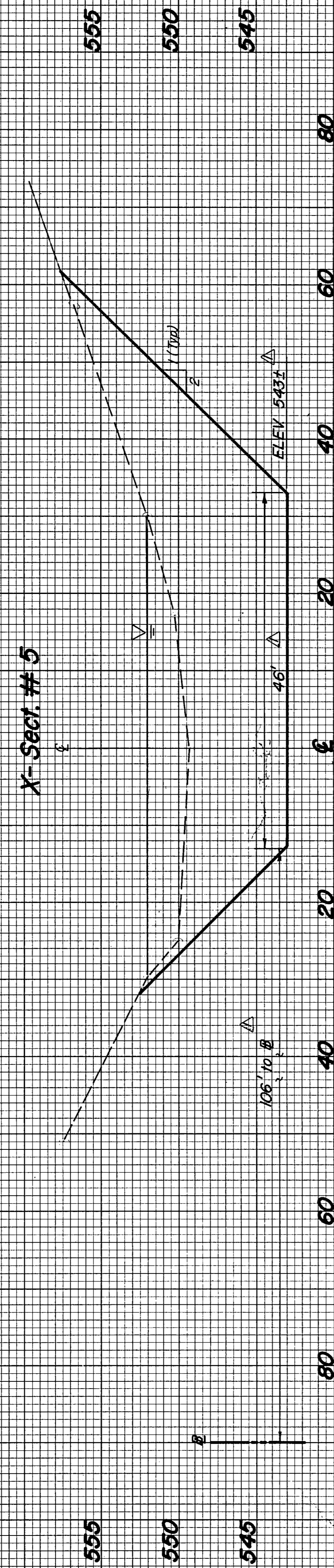
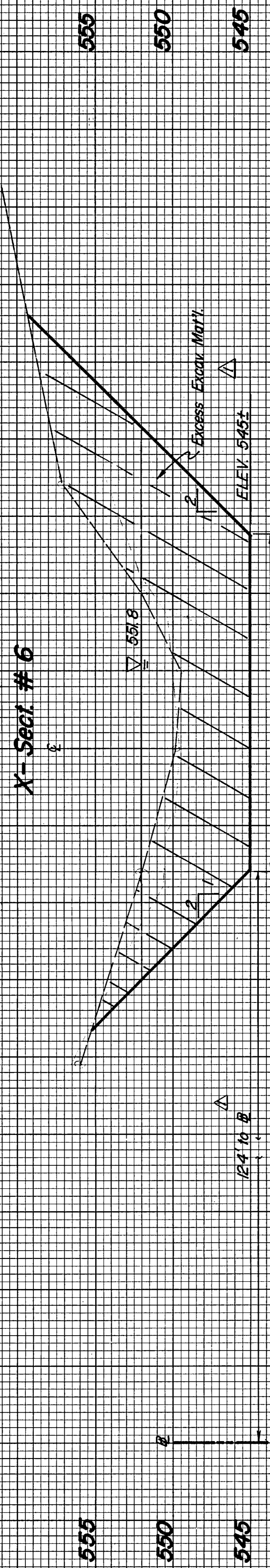


FINAL SURVEY PLOTTED FROM NOTE BOOK NO. \_\_\_\_\_ DATE \_\_\_\_\_ BY \_\_\_\_\_

ORIGINAL SURVEY PLOTTED FROM NOTE BOOK NO. \_\_\_\_\_ DATE \_\_\_\_\_ BY \_\_\_\_\_



Revised C. Hill 5-19-88

**RECORD DRAWING**

REVISED X-SECT AS NOTED		Revision	By	Date
TOWN OF ADDISON DALLAS COUNTY, TEXAS				
<b>WINNWOOD CELESTIAL PHASE 10</b>				
<b>POND X-SECTIONS</b>				
<b>GINN, INC.</b> Consulting Engineers, Dallas, Texas				
Designed - RCH	Drawn - ALO	Date - March, 1988	Sheet No. - 378	
Approved - HWG	Checked - RCH	Scale - H-1"=10', V-1"=5'		7 of 13