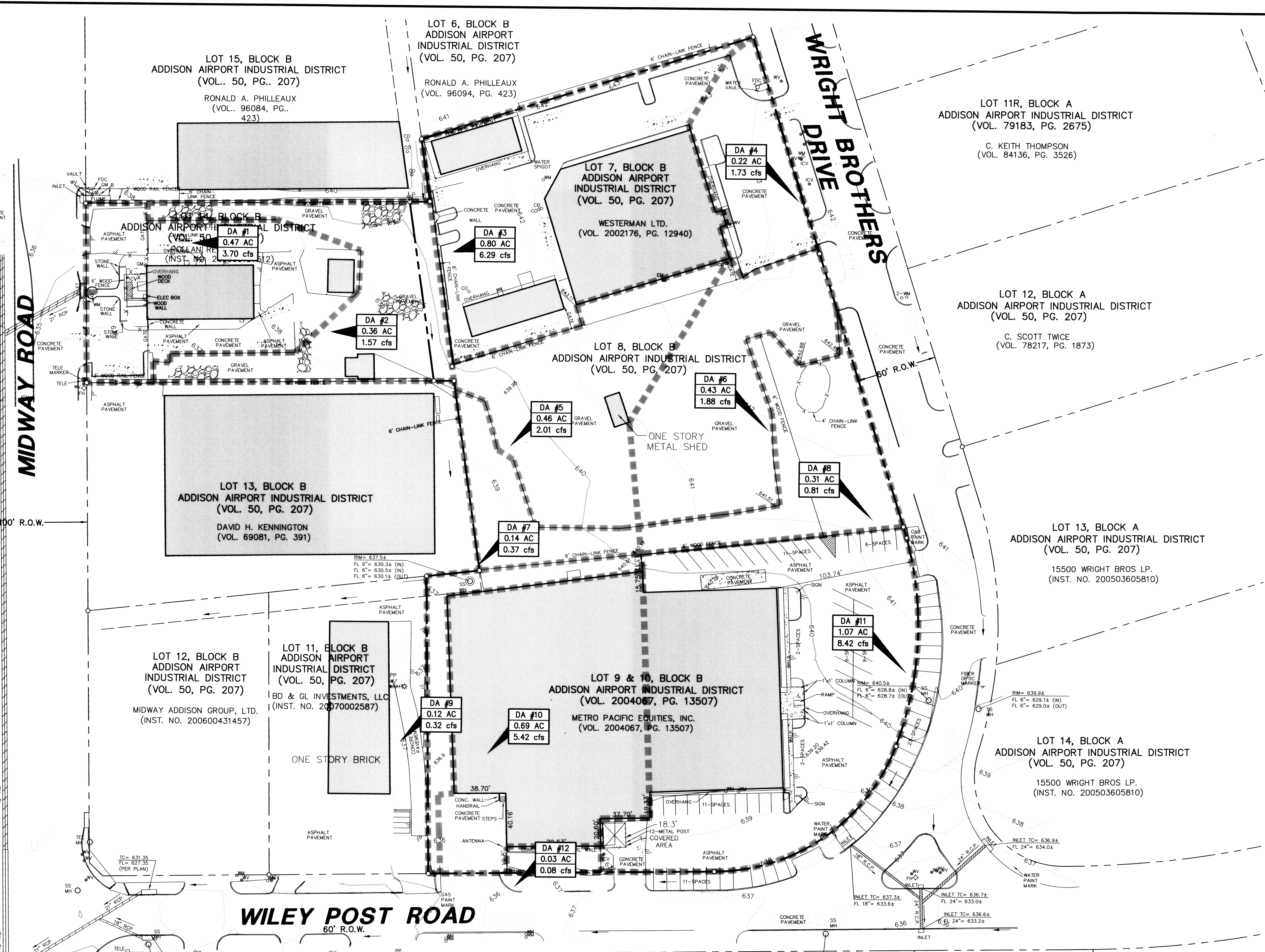


VICINITY MAP
(NOT TO SCALE)

LEGEND

- B. BOLLARD
- EM ⊕ ELECTRIC METER
- PP ⊕ POWER POLE
- LS ⊕ LIGHT STANDARD
- WM ⊕ WATER METER
- WV ⊕ WATER VALVE
- ICV ⊕ IRRIGATION CONTROL VALVE
- FH ⊕ FIRE HYDRANT
- CL ⊕ CLEANOUT
- MH ⊕ MANHOLE
- TSC ⊕ TRAFFIC SIGNAL CONTROL
- TSP ⊕ TRAFFIC SIGNAL POLE
- TELE ⊕ TELEPHONE BOX
- FL ⊕ FLOOD LIGHT
- FP ⊕ FLAG POLE
- SIGN ⊕ TRAFFIC SIGN
- IRS ⊕ 1/2-INCH IRON ROD
- W/P ⊕ W/PACHECO KOCH® CAP SET
- (C.M.) CONTROLLING MONUMENT
- PROPERTY LINE
- FENCE
- OVERHEAD UTILITY LINE
- UNDERGROUND ELECTRIC LINE
- UNDERGROUND TELEPHONE LINE
- UNDERGROUND CABLE LINE
- ▬▬▬▬ PROPOSED DRAINAGE DIVIDE

- DA #1 — WATERSHED DESIGNATION NUMBER
- AREA
- EXPECTED Q₁₀ IN CUBIC FEET PER SECOND



DRAINAGE AREA TABLE:

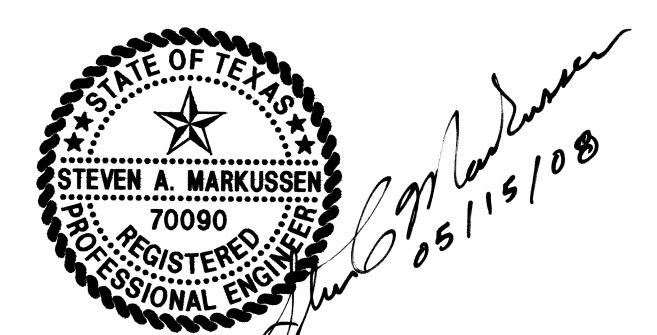
DRAINAGE AREA No.	AREA (acres)	C	T _c (minutes)	STORM FREQUENCY (year)	I ₁₀₀ (in/hour)	Q ₁₀₀ (cfs)	REMARKS
DA #1	0.47	0.90	10	100 YEAR	8.74	3.70	DRAINS TO EX CURB INLET
DA #2	0.36	0.50	10	100 YEAR	8.74	1.57	DRAINS TO EX CURB INLET
DA #3	0.80	0.90	10	100 YEAR	8.74	6.29	DRAINS TO EX CURB INLET
DA #4	0.22	0.90	10	100 YEAR	8.74	1.73	DRAINS TO EX CURB INLET
DA #5	0.46	0.50	10	100 YEAR	8.74	2.01	DRAINS TO EX CURB INLET
DA #6	0.43	0.50	10	100 YEAR	8.74	1.88	DRAINS TO EX CURB INLET
DA #7	0.14	0.30	10	100 YEAR	8.74	0.81	DRAINS TO EX CURB INLET
DA #8	0.31	0.30	10	100 YEAR	8.74	0.81	DRAINS TO EX CURB INLET
DA #9	0.12	0.30	10	100 YEAR	8.74	0.32	DRAINS TO EX CURB INLET
DA #10	0.69	0.90	10	100 YEAR	8.74	5.42	DRAINS TO EX CURB INLET
DA #11	1.07	0.90	10	100 YEAR	8.74	8.42	DRAINS TO EX CURB INLET
DA #12	0.03	0.30	10	100 YEAR	8.74	0.08	DRAINS TO EX CURB INLET

RECORD DRAWING

THIS DRAWING HAS BEEN REVISED TO REFLECT CONSTRUCTION RECORDS MAINTAINED AND PROVIDED BY THE CONTRACTOR FOR THIS PROJECT.

CONTRACTOR: PINION CONSTRUCTION

DATE REVISED: 06/24/2010



THE SEAL APPEARING ON THIS DOCUMENT WAS AUTHORIZED BY STEVEN A. MARKUSSEN, P.E. 70090 ON 05/15/2008. ALTERATION OF A SEALED DOCUMENT WITHOUT PROPER NOTIFICATION TO THE RESPONSIBLE ENGINEER IS AN OFFENSE UNDER THE TEXAS ENGINEERING PRACTICE ACT.

PW# 2007-002

NO.	DATE	REVISION

Pacheco Koch Consulting Engineers
8350 N. CENTRAL EXPWY., SUITE 1000 DALLAS, TX. 75206 972.235.3031

EXISTING DRAINAGE AREA MAP

JW OPERATING - PHASE 1

ADDISON AIRPORT INDUSTRIAL DISTRICT

LOT 7A, BLOCK B

TOWN OF ADDISON, TEXAS

DESIGN	DRAWN	DATE	SCALE	NOTES	FILE	NO.
CPM	CPM	FEB 2008	1"=40'			C3.1

C:\CLOCKUSKEY 06/24/2010 9:51AM M:\DWG-27\2792-07.089\DWG\2792-07.089CV-PHASE 1.DWG

JW OPERATING - PHASE 1