

ADDISON, TX

**HIDELL**  
**ASSOCIATES**  
**ARCHITECTS**

10000 BURNING WOOD DRIVE  
 CARROLLTON, TEXAS 75006-0770-0000  
 FAX 214 270 2700 • WWW.HIDELLARCHITECTS.COM



10.16.2007

**OWNER**  
 ONE OPERATING COMPANY  
 10000 BURNING WOOD DRIVE  
 CARROLLTON, TEXAS 75006  
 PHONE: 214 270 2700  
 FAX: 214 270 2700  
 www.operating.com

**STRUCTURAL ENGINEER**  
 HILL & GARDNER, SUITE 300 B-17  
 10000 BURNING WOOD DRIVE  
 CARROLLTON, TEXAS 75006  
 PHONE: 214 270 2600  
 FAX: 214 270 2600

**MEP ENGINEER**  
 CONSTRUCTION CONSULTING  
 10000 BURNING WOOD DRIVE  
 CARROLLTON, TEXAS 75006  
 PHONE: 214 270 2600  
 FAX: 214 270 2600

**LANDSCAPE ARCHITECT**  
 JAMES W. COOPER, P.A.  
 10000 BURNING WOOD DRIVE  
 CARROLLTON, TEXAS 75006  
 PHONE: 214 270 2600  
 FAX: 214 270 2600  
 www.jameswcooper.com

**AS-BUILTS**

**TITLE**

DEMO SITE PLAN - LOT 8

**REVISONS**

**JOB NO.** 26010

**DATE** 03/06/08

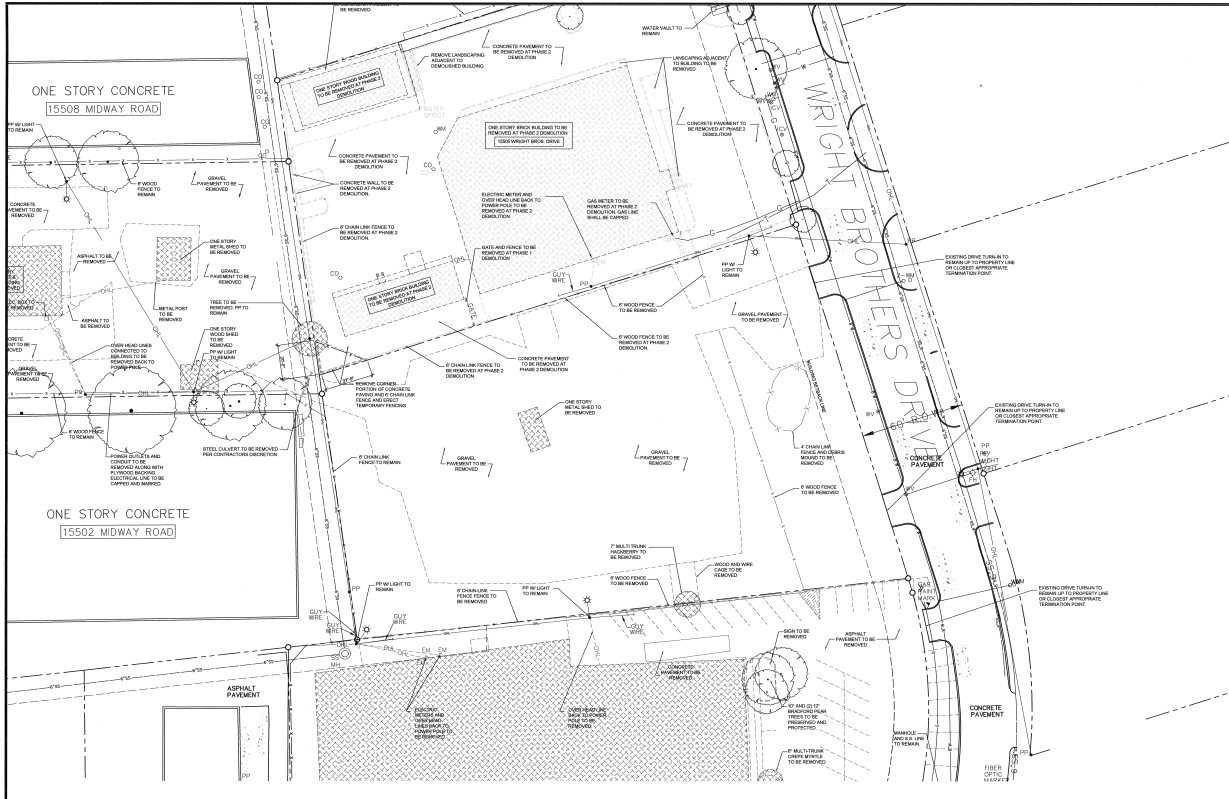
**Drawn by**

**Checked by**

**SHEET NO.**

**DEMO-103**

ISSUE FOR REVIEW ONLY



**01 DEMO SITE PLAN - LOT 8**  
 SCALE: 1"=20'-0"

**DEMOLITION NOTES**

1. DEMOLITION WORK: DEMOLITION WORK AREAS ARE INDICATED BY SHARPER LINES AND HATCHING ON THIS DRAWING.
2. REMOVE FENCING: REMOVE FENCING INCLUDING GATE AND GATE POSTS. FENCING IS INDICATED BY SHARPER LINES. COORDINATE WITH GENERAL CONTRACTOR TO PERFORM TO REMOVE PER CONTRACTOR'S LINE DRAWING.
3. REMOVE BRICK: REMOVE BRICK WALLS TO BE REMOVED AS INDICATED BY SHARPER LINES. REMOVE PER WALLS OUTSIDE THE PROPERTY LINE. IS TO BE COORDINATED WITH THE GENERAL CONTRACTOR. RELATIVE TO BUILDINGS OR ADJACENT BUILDINGS.
4. REMOVE BRICK: REMOVE BRICK WALLS WITHIN THE PROPERTY LINE, AS INDICATED BY SHARPER LINES ON THIS DRAWING.
5. REMOVE CURB: REMOVE CURB AND GUTTER AS INDICATED.
6. REMOVE TREES: TREES TO BE REMOVED ARE INDICATED BY HATCHING.
7. PROTECT TREES TO REMAIN: TREES TO REMAIN ARE INDICATED BY SOLID LINES ON THE DWP LINE, WITHOUT HATCHING.

**HAZARDOUS MATERIALS**  
 ALL DEMOLITION WORK SHALL BE PERFORMED BY SEPARATE CONTRACT. ADJACENT WALLS TO BE COORDINATED WITH WORK OF THE GENERAL CONTRACTOR.

- UTILITIES**
1. LOCATION OF ALL UTILITIES: UTILITIES SHALL BE MAINTAINED. OR SHALL BE RELOCATED TO PROVIDE FOR NECESSARY UTILITY SERVICES FOR ADJACENT BUILDINGS. SEE THE UTILITY BILLING ACCESS TO UNDER-SIDE ELECTRICAL.
  2. DEACTIVATION OF UTILITIES: UTILITIES TO REMOVED BUILDING SHALL BE DEACTIVATED ACCORDING TO A REGISTERED ENGINEER'S SCHEDULED DEACTIVATION COORDINATION BY THE GENERAL CONTRACTOR.
  3. CUT OFF FLOW OR CUTOFF FLOW OF A MEMBER OF A BUILDING SYSTEM: MARK LOCATION OF CUTOFF FLOW COORDINATION WITH NEW CONSTRUCTION.
  4. MARK AND MAINTAIN UTILITY LINES THAT WOULD BE REMOVED TO BE PRESERVED SHALL BE DEMOLISHED PER UTILITY AGENCIES. MARK LOCATION OF REMAINING LINES FOR COORDINATION WITH THE SERVICE.
  5. CABLE AND PHONE LINES THAT REMOVED BUILDING TO BE DEMOLISHED SHALL BE REMOVED TO THE NEAREST POWER POLE OR UTILITY SERVICE LINES TO BE REMOVED OR DEMOLISHED.
  6. REMOVE ELECTRICAL LINES THAT REMOVED BUILDING TO BE DEMOLISHED SHALL BE REMOVED TO THE NEAREST DISTRIBUTION SANITARY SERVICE LINES TO BE REMOVED OR DEMOLISHED.
  7. SANITARY DRAIN LINES THAT REMOVED BUILDING TO BE DEMOLISHED SHALL BE REMOVED TO THE NEAREST DISTRIBUTION SANITARY SERVICE LINES TO BE REMOVED OR DEMOLISHED.
  8. CONTACT THE TOWN OF ADDISON FRANCHISE DEPARTMENT TO COORDINATE WITH THE TOWN OF ADDISON PUBLIC UTILITIES DEPARTMENT. CONTACT CITY ENGINEER TO OBTAIN A CUT OFF FLOW AT EACH END FOR SUBSTITUTION.
  9. CONTACT THE TOWN OF ADDISON FRANCHISE DEPARTMENT AT 254-828-7200 TO DISCONNECT WATER SERVICE PRIOR TO DEMOLITION OF ANY BUILDING BEING DEMOLISHED BY THIS SERVICE.
  10. WATER SERVICE LINES, TAPS, AND OTHER UTILITY LINES SHALL BE TERMINATED AS REQUIRED BY THE 2005 PUD AND THE TOWN OF ADDISON PUBLIC UTILITIES DEPARTMENT.

- BUILDING DEMOLITION SCHEDULE**
1. DEMOLITION OF INDIVIDUAL BUILDINGS SHALL BE SCHEDULED TO COINCIDE WITH WORK COMPLETED BY THE ASBESTOS ABATEMENT CONTRACTOR.
  2. BUILDINGS WILL GENERALLY BE RELEASED FOR DEMOLITION GROUPS. THESE GROUPS OF BUILDINGS WILL BE COORDINATED BY THE GENERAL CONTRACTOR TO PERFORM DEMOLITION GROUPS AND REPORTS ACCESS TO THE LOCATIONS OF THESE BUILDINGS TO BE DEMOLISHED.
  3. DEMOLITION OF INDIVIDUAL BUILDINGS SHALL BE SCHEDULED TO COINCIDE WITH WORK COMPLETED BY THE ASBESTOS ABATEMENT CONTRACTOR.
  4. BUILDINGS WILL GENERALLY BE RELEASED FOR DEMOLITION IN GROUPS. THESE GROUPS OF BUILDINGS WILL BE COORDINATED BY THE GENERAL CONTRACTOR TO PERFORM DEMOLITION GROUPS AND REPORTS ACCESS TO THE LOCATIONS OF THESE BUILDINGS TO BE DEMOLISHED.
- PREPARATION FOR DEMOLITION**
1. DEMOLITION CONTRACTOR SHALL BE RESPONSIBLE FOR THE NEAREST DISTRIBUTION SANITARY SERVICE LINES TO BE REMOVED OR DEMOLISHED.
  2. REMOVE ALL ELECTRICAL AND SANITARY SERVICES TO BE DEMOLISHED AS REQUIRED BY THE GENERAL CONTRACTOR AND REGULATORY AGENCIES.
  3. REMOVE ALL ELECTRICAL AND SANITARY SERVICES TO BE DEMOLISHED AS REQUIRED BY THE GENERAL CONTRACTOR AND REGULATORY AGENCIES.
  4. REMOVE ALL ELECTRICAL AND SANITARY SERVICES TO BE DEMOLISHED AS REQUIRED BY THE GENERAL CONTRACTOR AND REGULATORY AGENCIES.

- DEMOLITION**
1. PROTECT EXISTING UTILITIES: WHEN SUCH UTILITIES ARE NOT INDICATED TO BE MAINTAINED AND WHERE APPLICABLE PROTECTORS BE REQUIRED.
  2. ERECT TEMPORARY PROTECTION: SUCH AS BRACKETS, STIFFERS, AND TREE PROTECTION WHERE REQUIRED.
  3. BRACKET PROTECTION: BRACKET PROTECTION SHALL BE REQUIRED TO PROTECT EXISTING UTILITIES AND STRUCTURES.
  4. TREE PROTECTION: ERECT A BRACKET WHILE EXISTING AND OR LINE OF REMOVAL. TREES OR BRACKET PROTECTION SHALL BE REQUIRED TO PROTECT EXISTING UTILITIES AND STRUCTURES.
  5. BRACKET PROTECTION: BRACKET PROTECTION SHALL BE REQUIRED TO PROTECT EXISTING UTILITIES AND STRUCTURES.
  6. BRACKET PROTECTION: BRACKET PROTECTION SHALL BE REQUIRED TO PROTECT EXISTING UTILITIES AND STRUCTURES.
  7. BRACKET PROTECTION: BRACKET PROTECTION SHALL BE REQUIRED TO PROTECT EXISTING UTILITIES AND STRUCTURES.
  8. BRACKET PROTECTION: BRACKET PROTECTION SHALL BE REQUIRED TO PROTECT EXISTING UTILITIES AND STRUCTURES.
  9. BRACKET PROTECTION: BRACKET PROTECTION SHALL BE REQUIRED TO PROTECT EXISTING UTILITIES AND STRUCTURES.
  10. BRACKET PROTECTION: BRACKET PROTECTION SHALL BE REQUIRED TO PROTECT EXISTING UTILITIES AND STRUCTURES.
- DEMO SITE PLAN - LOT 8**