

# JW OPERATING COMPANY HEADQUARTERS

INTERSECTION OF WILEY POST ROAD AND  
WRIGHT BROTHERS DR.  
ADDISON, TEXAS 75001

## HIDELL ARCHITECTS

ARCHITECT  
3033 KELLWAY DRIVE, SUITE 120  
CARROLLTON, TEXAS 75006-2005  
CONTACT: ANTHONY BLAKAS  
(972) 416-4886 FAX (972) 416-0168

## J-W OPERATING COMPANY

OWNER  
15508 WRIGHT BROTHERS DR.  
ADDISON, TEXAS 75001  
PHONE (972) 533-8191  
FAX (972) 591-0704

## PACHECO KOCH CONSULTING ENGINEERS

CIVIL ENGINEER  
8350 N CENTRAL EXPRESSWAY SUITE 1000  
DALLAS, TEXAS 75205-9812  
PHONE (972) 235-3031  
FAX (972) 235-9544

## R. L. GOODSON

STRUCTURAL ENGINEER  
5445 LA SIERRA, SUITE 300-LB 17  
DALLAS, TEXAS 75231  
PHONE (214) 738-8100  
FAX (214) 739-8354

## BASHARKHAH ENGINEERING

MEP ENGINEER  
1201 TURTLE CREEK BLVD.  
DALLAS, TEXAS 75207  
PHONE (214) 720-1005  
FAX (972) 720-1006

## CAYE COOK & ASSOCIATES

LANDSCAPE ARCHITECT  
12700 HILLCREST RD, SUITE 149  
DALLAS, TEXAS 75230  
PHONE (214) 738-8105  
FAX (214) 373-0170

**AS-BUILTS**

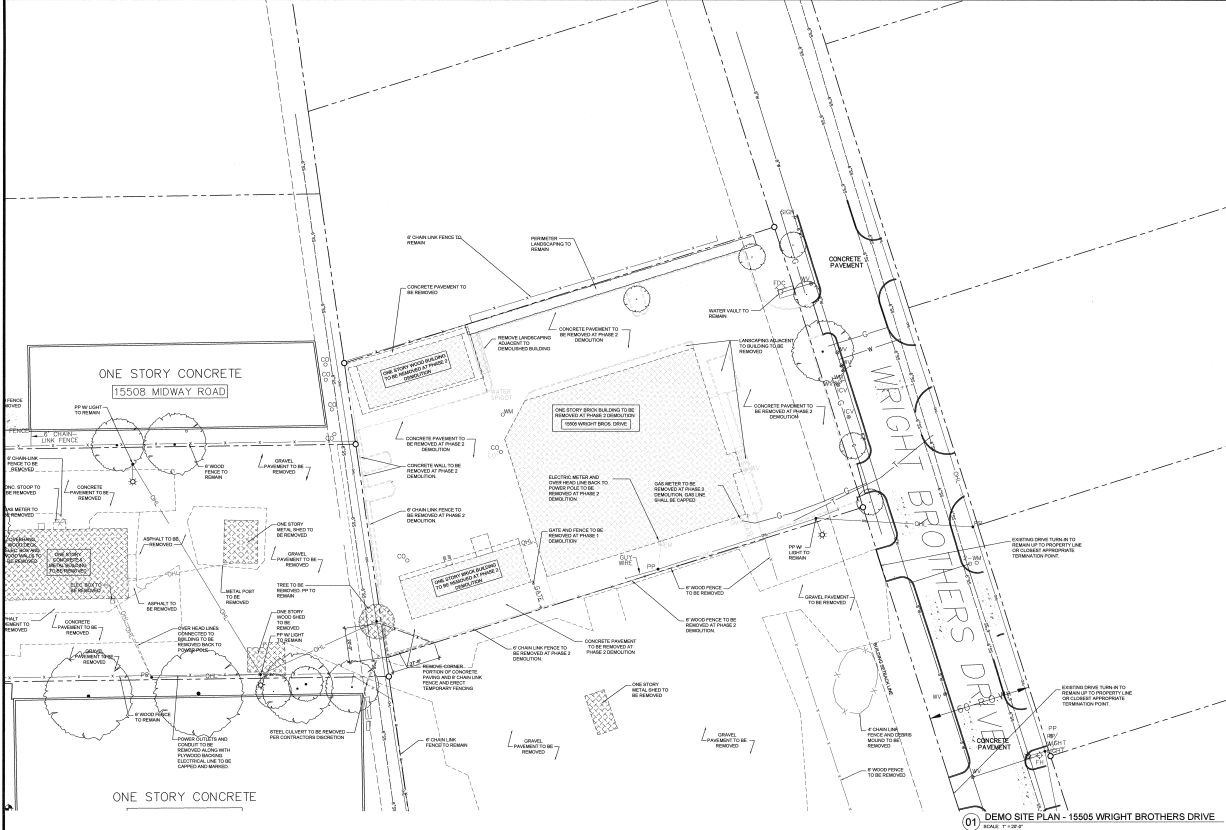
02-06-2008

SITE DEMOLITION SUBMISSION









**DEMOLITION NOTES**

**DEMOLITION WORK NOTES**

1. REMOVE EXISTING: EXISTING UTILITIES ARE INDICATED BY DASHED LINES AND NOTING ON THIS DRAWING.
2. REMOVAL FENCES: REMOVE EXISTING FENCES AND UTILITIES. FENCES TO REMAIN ARE INDICATED BY SOLID LINES. COORDINATE WITH GENERAL CONTRACTOR RELATIVE TO REMOVAL TO MAINTAIN THE CONTRACTOR'S USE DURING DEMOLITION.
3. SPECIAL SIGNAL: REMOVE SIGNALS RELATIVE TO REMOVALS AS INDICATED BY REMOVAL OF SIGNALS OUTSIDE THE PROPERTY LINE. IT IS TO BE COORDINATED WITH THE GENERAL CONTRACTOR RELATIVE TO RELOCATION OF SIGNALS.
4. SIGNAGE: REMOVE SIGNAGE RELATIVE TO THE PROPERTY LINE, AS INDICATED BY DASHED LINES ON THIS DRAWING.
5. CURB CUTS: REMOVE CURB CUTS AS INDICATED.
6. REMOVAL TREES: TREES TO BE REMOVED ARE INDICATED BY NOTING.
7. REMOVAL TRUSS TO REMAIN: TREES TO REMAIN ARE INDICATED BY SOLID LINES AT THE DRIP LINE, WITHOUT NOTING.

**HAZARDOUS MATERIALS**

ALL HAZARDOUS MATERIALS TO BE REMOVED SHALL BE REMOVED BY SEPARATE CONTRACT. APARTMENT HALLS COORDINATE WITH WORK OF A SEPARATE GENERAL CONTRACTOR.

**UTILITIES**

1. EXISTING UTILITIES: UTILITIES SHALL REMAIN ACTUAL OR SHALL BE RELOCATED TO PROVIDE FOR NECESSARY UTILITY SERVICES FOR ALL MAJOR CONTRACTORS OR OTHER BUSINESS ACCESS TO EXISTING UTILITIES.
2. SEPARATION OF UTILITIES: UTILITIES TO REMAIN SHALL BE IDENTIFIED AND SEPARATED, ACCORDING TO A PREDETERMINED SCHEDULED DEMOLITION AND COORDINATED BY THE GENERAL CONTRACTOR.
3. CLOT OF FENCE OR CURB CUT: A MINIMUM OF 10' OF BELONGING GRADE, WITH LOCATION OF CURB CUT LINE COORDINATED WITH GENERAL CONTRACTOR.
4. REMOVAL AND UTILITIES LINES THAT REMAIN SHALL BE IDENTIFIED AND BE REMOVED TO NEAREST UTILITY TIE. MARK LOCATION BY REMOVAL LINE FOR COORDINATION WITH GENERAL CONTRACTOR.
5. OVERHEAD ELECTRICAL LINES FOR SERVICE BUILDINGS TO BE DEMOLISHED SHALL BE REMOVED TO NEAREST POWER POLE.
6. SANITARY AND PHONE LINES THAT SERVICE BUILDINGS TO BE DEMOLISHED SHALL BE REMOVED TO THE NEAREST POWER POLE OR UTILITY SERVICE BOX.
7. CABLE AND PHONE LINES THAT SERVICE BUILDINGS TO BE DEMOLISHED SHALL BE DEMOLISHED BY THE NEAREST TELEPHONE SERVICE PROVIDER. ALL CABLES AND PHONE LINES TO BE DEMOLISHED SHALL BE IDENTIFIED AND SEPARATED, ACCORDING TO A PREDETERMINED SCHEDULED DEMOLITION AND COORDINATED BY THE GENERAL CONTRACTOR.
8. CONTACT THE TOWN OF ADDISON FURNISH DEPARTMENT AT 817-558-7862 TO DISCONNECT CABLES BEFORE PHOENIX DEMOLITION OF ANY BUILDINGS BEING DEMOLISHED BY THIS SERVICE.
9. REMOVE WASTE LINES, TANKS, AND OTHER UTILITIES LINES SHALL BE TERMINATED AS REQUIRED BY THE CITY OF ADDISON AND THE TOWN OF ADDISON PUBLIC WORKS DEPARTMENT.

**BUILDING DEMOLITION SCHEDULE**

1. DEMOLITION OF REMOVAL BUILDING SHALL BE SCHEDULED TO COINCIDE WITH WORK COMPLETED BY THE ASSESSOR ADJUTANT CONTRACTOR.
2. BUILDINGS WILL GENERALLY BE RELEASED FOR DEMOLITION GROUPS. THESE GROUPS OF BUILDINGS WILL BE COORDINATED BY THE GENERAL CONTRACTOR TO MAINTAIN WORKING CONDITIONS AND IMPROVE ACCESS TO THE LOCATIONS OF THESE BUILDINGS TO BE DEMOLISHED.
3. DEMOLITION OF REMOVAL BUILDING SHALL BE SCHEDULED TO COINCIDE WITH WORK COMPLETED BY THE ASSESSOR ADJUTANT CONTRACTOR.
4. BUILDINGS WILL BE RELEASED FOR DEMOLITION IN GROUPS. THESE GROUPS OF BUILDINGS WILL BE COORDINATED BY THE GENERAL CONTRACTOR TO MAINTAIN WORKING CONDITIONS AND IMPROVE ACCESS TO THE LOCATIONS OF THESE BUILDINGS TO BE DEMOLISHED.

**PREPARATION FOR DEMOLITION**

1. THE CONTRACTOR SHALL REMOVE ALL EXISTING UTILITIES AND DEMOLITION EQUIPMENT BEFORE STARTING DEMOLITION OF A BUILDING. REMOVAL AND DEMOLITION OF EXISTING UTILITIES SHALL BE ACCORDING WITH RECORDED EVIDENCE AND REGULATIONS.
2. REFER TO THE CITY OF ADDISON'S DEMOLITION AND DEMOLITION CONTRACTOR AGREEMENT FOR MORE INFORMATION.

**PROTECTION**

THE CONTRACTOR SHALL OBTAIN AND MAINTAIN ACCESS TO ALL THE PROPERTY OF THE ADJUTANT CONTRACTOR'S GENERAL CONTRACTOR. THE CONTRACTOR SHALL OBTAIN AND MAINTAIN ACCESS TO ALL THE PROPERTY OF THE ADJUTANT CONTRACTOR'S GENERAL CONTRACTOR TO MAINTAIN ACCESS TO THE SITE.

**PROTECT EXISTING UTILITIES**

1. EXISTING UTILITIES: EXISTING UTILITIES ARE INDICATED BY DASHED LINES AND NOTING ON THIS DRAWING AND WHEN SUCH UTILITIES ARE NOT INDICATED BY DASHED LINES AND NOTING ON THIS DRAWING, THE CONTRACTOR SHALL BE RESPONSIBLE FOR IDENTIFYING AND PROTECTING THEM.
2. EXISTING UTILITIES: EXISTING UTILITIES ARE INDICATED BY DASHED LINES AND NOTING ON THIS DRAWING AND WHEN SUCH UTILITIES ARE NOT INDICATED BY DASHED LINES AND NOTING ON THIS DRAWING, THE CONTRACTOR SHALL BE RESPONSIBLE FOR IDENTIFYING AND PROTECTING THEM.
3. EXISTING UTILITIES: EXISTING UTILITIES ARE INDICATED BY DASHED LINES AND NOTING ON THIS DRAWING AND WHEN SUCH UTILITIES ARE NOT INDICATED BY DASHED LINES AND NOTING ON THIS DRAWING, THE CONTRACTOR SHALL BE RESPONSIBLE FOR IDENTIFYING AND PROTECTING THEM.

**DEMOGRAPHIC**

DEMOLITION OF EXISTING UTILITIES AND STRUCTURES SHALL BE IMPROVED TO COMPLY WITH THE CITY OF ADDISON'S DEMOLITION AND DEMOLITION CONTRACTOR AGREEMENT. THE CONTRACTOR SHALL BE RESPONSIBLE FOR IDENTIFYING AND PROTECTING THEM.

**DEMOGRAPHIC**

DEMOLITION OF EXISTING UTILITIES AND STRUCTURES SHALL BE IMPROVED TO COMPLY WITH THE CITY OF ADDISON'S DEMOLITION AND DEMOLITION CONTRACTOR AGREEMENT. THE CONTRACTOR SHALL BE RESPONSIBLE FOR IDENTIFYING AND PROTECTING THEM.

**DEMOGRAPHIC**

DEMOLITION OF EXISTING UTILITIES AND STRUCTURES SHALL BE IMPROVED TO COMPLY WITH THE CITY OF ADDISON'S DEMOLITION AND DEMOLITION CONTRACTOR AGREEMENT. THE CONTRACTOR SHALL BE RESPONSIBLE FOR IDENTIFYING AND PROTECTING THEM.

**DEMOGRAPHIC**

DEMOLITION OF EXISTING UTILITIES AND STRUCTURES SHALL BE IMPROVED TO COMPLY WITH THE CITY OF ADDISON'S DEMOLITION AND DEMOLITION CONTRACTOR AGREEMENT. THE CONTRACTOR SHALL BE RESPONSIBLE FOR IDENTIFYING AND PROTECTING THEM.

**01 DEMO SITE PLAN - 15505 WRIGHT BROTHERS DRIVE**  
Scale: 1/8" = 1'-0"



ADDISON, TX  
**HIDELL ASSOCIATES ARCHITECTS**

3800 WINDY HILL DRIVE  
CARROLLTON, TEXAS 75007-0718  
P: 972-475-1111 F: 972-475-1112



**CONCRETE**  
CONCRETE WORK COMPANY  
2000 WINDY HILL DRIVE  
CARROLLTON, TEXAS 75007-0718  
P: 972-475-1111 F: 972-475-1112

**COAL ENGINEERS**  
PACIFIC RAILROAD ENGINEERS  
1000 WINDY HILL DRIVE  
CARROLLTON, TEXAS 75007-0718  
P: 972-475-1111 F: 972-475-1112

**MEP ENGINEERS**  
CONCRETE WORK COMPANY  
2000 WINDY HILL DRIVE  
CARROLLTON, TEXAS 75007-0718  
P: 972-475-1111 F: 972-475-1112

**LANDSCAPE ARCHITECT**  
LANDSCAPE ARCHITECT  
2000 WINDY HILL DRIVE  
CARROLLTON, TEXAS 75007-0718  
P: 972-475-1111 F: 972-475-1112



**TITLE**  
DEMO SITE PLAN - 15505 WRIGHT BROTHERS DRIVE

**REVISONS**

JOB NO. 26010

Date: 08/11/2007  
Drawn by: J. H. H. H.

SHEET NO.

**DEMO-102**

ISSUE FOR REVIEW ONLY

ISSUE FOR REVIEW ONLY



