

11.06.2009

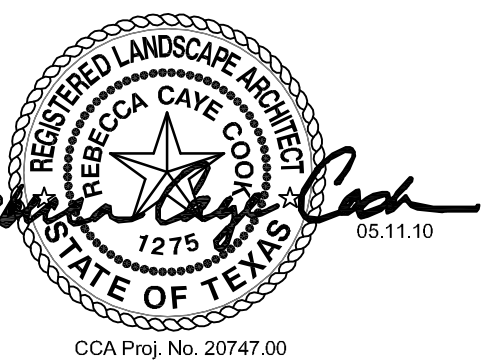
OWNER
 JW OPERATING COMPANY
 15508 WRIGHT BROTHERS DR.
 ADDISON, TX 75001
 PHONE: (972) 233-4191
 FAX: (972) 991-0704
 ggradick@jwooperating.com

CIVIL ENGINEER
 PACHECO KOCH CONSULTING ENGINEERS
 8350 N CENTRAL EXPRESSWAY SUITE 1000
 DALLAS, TX 75208-1612
 PHONE: (972) 235-3031
 FAX: (972) 235-9544

STRUCTURAL ENGINEER
 R.L. GOODSON
 5445 LA SIERRA, SUITE 300-LB 17
 DALLAS, TX 75231
 PHONE: (214) 739-8100
 FAX: (214) 739-8354

MEP ENGINEER
 BASHARWAH ENGINEERING
 921 INDUSTRIAL BLVD, SUITE 100
 DALLAS, TX 75207
 PHONE: (214) 720-1005
 FAX: (214) 720-1006

LANDSCAPE ARCHITECT
 CAYE COOK & ASSOCIATES
 12700 HILLCREST ROAD, SUITE 149
 DALLAS, TX 75230
 PHONE: (214) 739-0105
 FAX: (214) 373-0170
 barbara@cclandscapearch.com



TITLE

PLANTING PLAN

REVISIONS

05.11.2010 PLANTING MODS.

JOB NO. 26010

Issue Date: 04/23/2010

Drawn By: bb

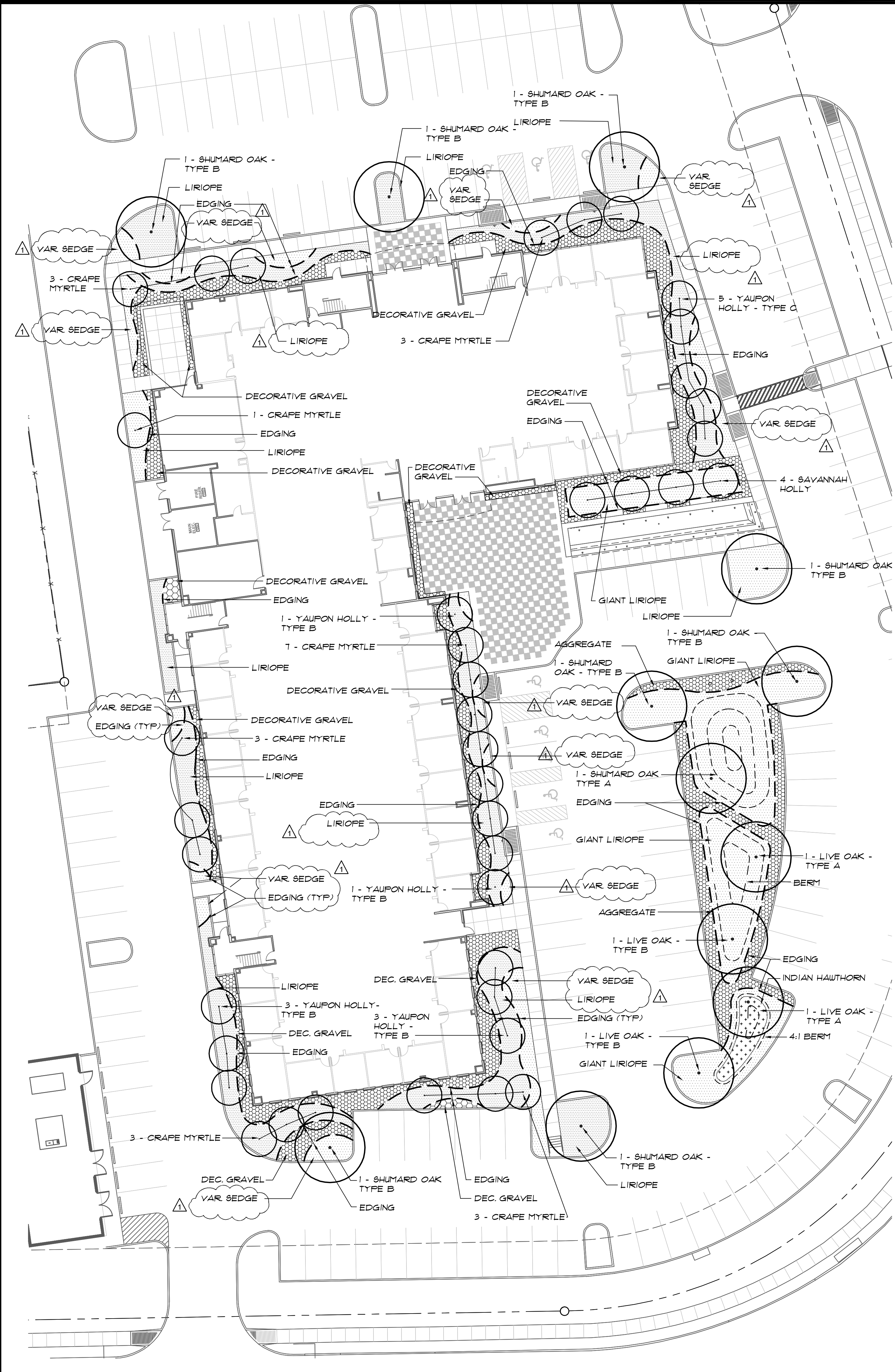
Checked By: cc

SHEET NO.

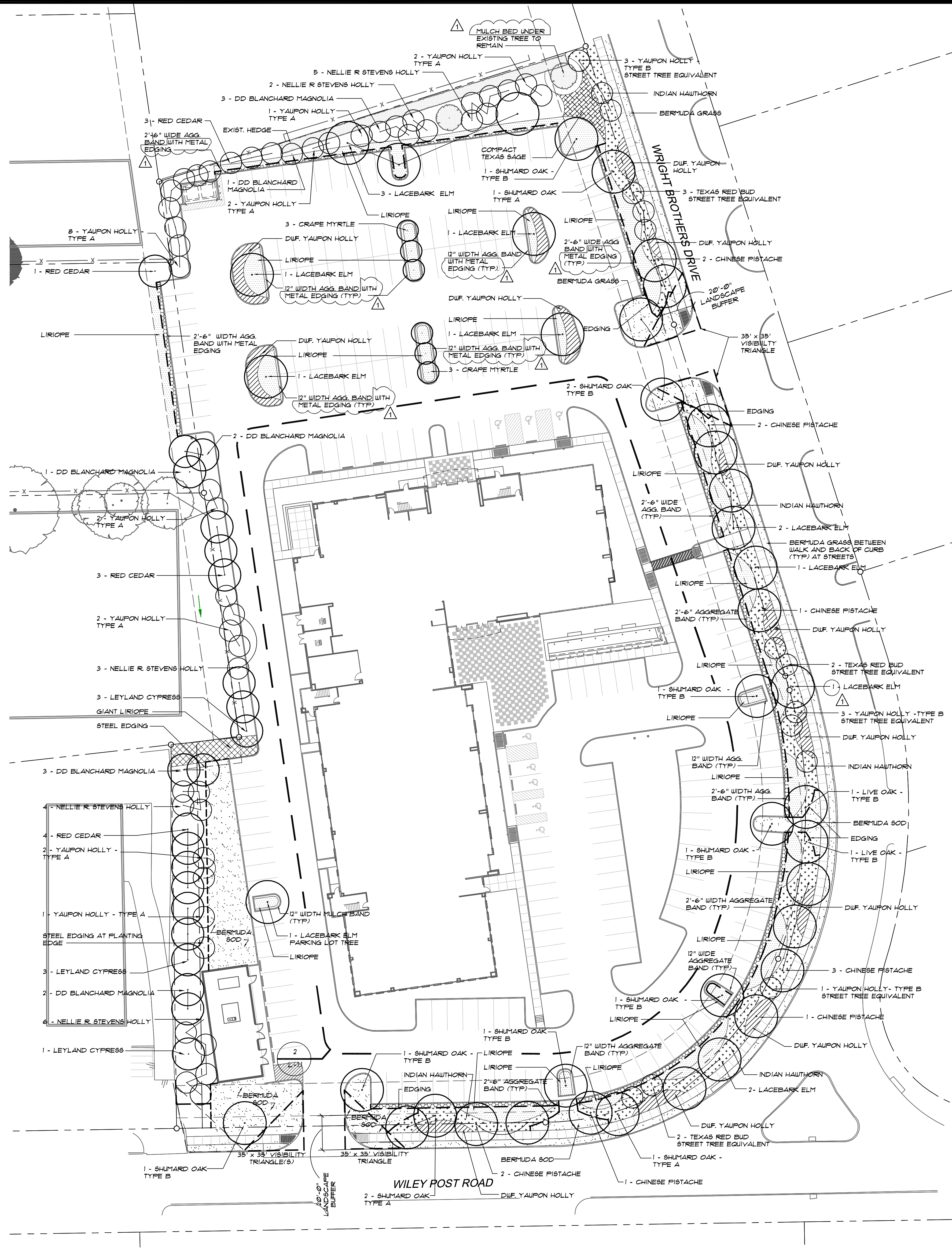
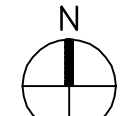
AS-BUILTS

1-1

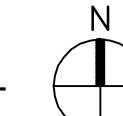
ISSUE FOR REVIEW ONLY



2 PLANTING PLAN - BUILDING ENLARGEMENT
 1" = 20'-0"



1 PLANTING PLAN - SITE PERIMETER
 1" = 30'-0"



LANDSCAPE ORDINANCE REQ. - PERIMETER PLANTING

- STREET TREES - (1) 4" CALIPER STREET TREE + (8) 5 GAL. SHRUBS / 30 LIN. FT. FRONTAGE (OR 12 ORNAMENTAL TREES = 6 STREET TREES)
 - WRIGHT BROTHERS - 614'-9" LIN. FT. = 21 TREES + 164 SHRUBS REQUIRED
 - 15 SHADE TREE + 6 EQUIVALENT TREES (12 ORNAMENTAL TREES) PLUS OVER 164 SHRUBS PROVIDED
 - WILEY POST ROAD - 313'-7" LIN. FT. = 11 TREES + 84 SHRUBS REQUIRED
 - 10 SHADE TREES + 1 EQUIVALENT TREE (2 ORNAMENTAL TREES) PLUS OVER 164 SHRUBS PROVIDED
- PARKING LOT PERIMETER - (1) 4" CALIPER TREE + (8) 5 GAL. SHRUBS / 35 LIN. FT. OF PERIMETER
 - WRIGHT BROTHERS - 614'-9" LIN. FT. = 18 TREES + 142 SHRUBS REQUIRED / PROVIDED
 - WILEY POST ROAD - 313'-7" LIN. FT. = 9 TREES + 49 SHRUBS REQUIRED / PROVIDED
- INTERIOR PARKING LOT - (1) 4" CALIPER TREE / 10 PARKING STALLS
 - NO STALL FARTHER THAN 50' FROM TREE OR 75' FROM TWO (2) TREES

PLANTING LEGEND

- PROPERTY LINE
- PROPOSED TREE
- METAL EDGING
- ENLARGEMENT
- DETAIL NO. L3.02
- SHEET NO.