

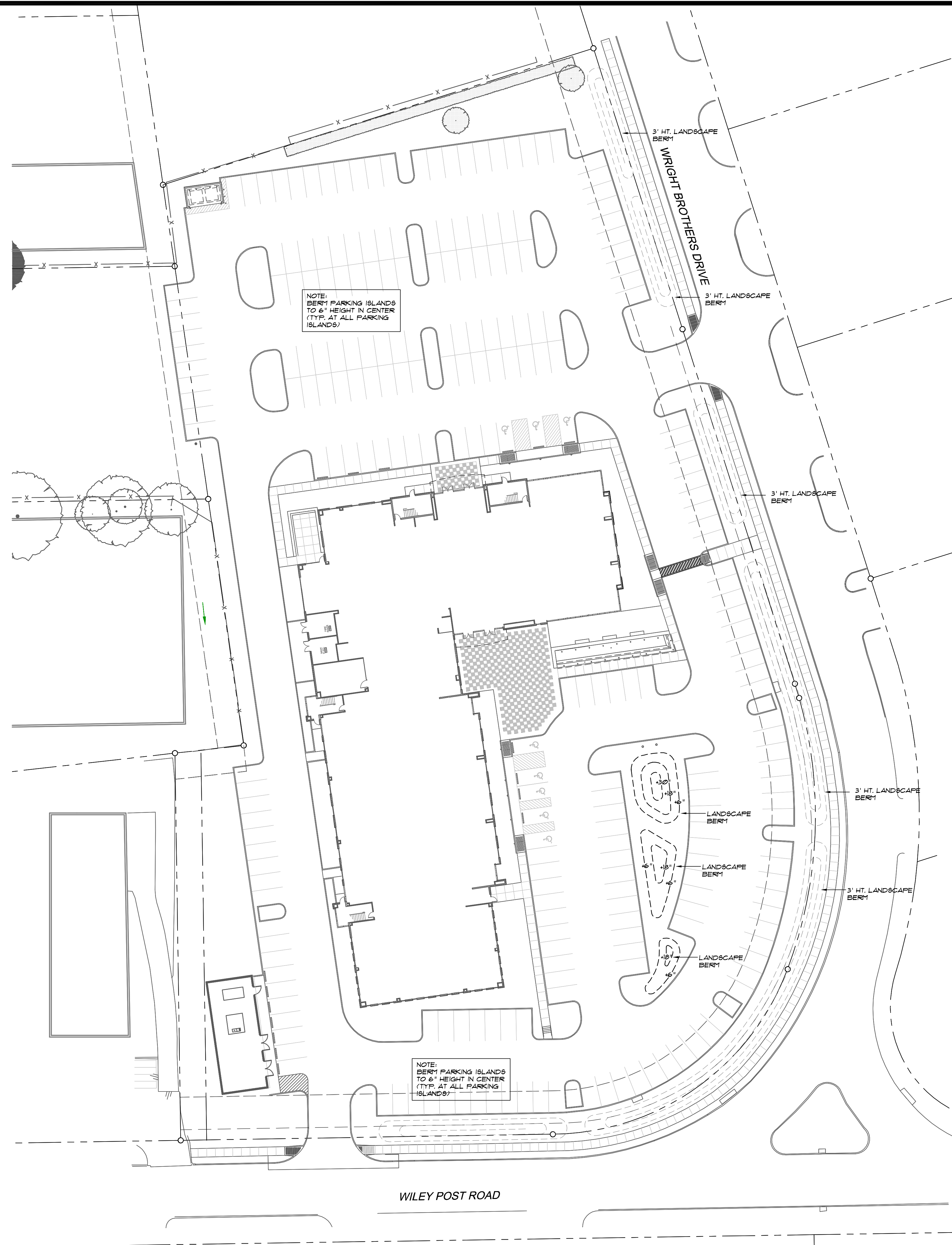
PLANTING NOTES

- CONTRACTOR IS RESPONSIBLE FOR VERIFYING UNDERGROUND UTILITY LOCATIONS PRIOR TO CONSTRUCTION.
- IT IS THE RESPONSIBILITY OF THE CONTRACTOR TO ADVISE THE LANDSCAPE ARCHITECT OF ANY CONDITION FOUND ON THE SITE WHICH PROHIBITS INSTALLATION AS SHOWN ON THESE DRAWINGS.
- FINAL GRADING SHALL BE INSTALLED AND APPROVED BY THE OWNER'S REPRESENTATIVE IN THE FIELD PRIOR TO PLANTING OR PLANTING LAYOUT.
- LANDSCAPE CONTRACTOR SHALL BE RESPONSIBLE FOR FINE GRADING, REMOVAL OF MISCELLANEOUS DEBRIS, AND ANY ADDITIONAL FILL REQUIRED TO CREATE A SMOOTH CONDITION PRIOR TO PLANTING IN ALL PLANTING AREAS.
- LANDSCAPE AREAS SHALL BE KEPT FREE OF TRASH, LITTER, & WEEDS AT ALL TIMES DURING CONSTRUCTION.
- EXCESS ROCK FROM LANDSCAPE GRADING TO BE REMOVED AND DISPOSED OF OFF-SITE BY CONTRACTOR.
- ALL QUANTITIES ON THIS PLAN ARE FOR INFORMATION ONLY. (PLANT SPACING IS AS INDICATED ON PLANT SCHEDULE. UNLESS OTHERWISE NOTED.) IT IS THE CONTRACTOR'S RESPONSIBILITY TO VERIFY QUANTITIES PRIOR TO BIDDING AND TO PROVIDE FULL COVERAGE IN ALL PLANTING AREAS AT SPACING AS SPECIFIED IN THE PLANT AND MATERIALS LIST. REMARKS REGARDLESS OF QUANTITY INDICATED.
- UNLESS DIMENSIONED ON PLAN, TREE LOCATIONS ARE DIAGRAMMATIC. CONTRACTOR SHALL STAKE OUT ALL TREE LOCATIONS IN FIELD USING COLORED FLAGS FOR REVIEW AND APPROVAL BY THE LANDSCAPE ARCHITECT PRIOR TO EXCAVATION. LANDSCAPE ARCHITECT RESERVES THE RIGHT TO ADJUST PLANTS TO EXACT LOCATION IN FIELD.
- TREES SHALL BE PLANTED AT LEAST FIVE (5') FEET FROM ANY UTILITY LINE, CURB, OR SIDEWALK, OR OUTSIDE ALL UTILITY EASEMENTS UNLESS OTHERWISE NOTED.
- TREES WILL BE PLANTED IN BERMED PARKING ISLANDS. BERM PARKING ISLANDS SIX (6") INCHES IN CENTER. STOCKPILED TOPSOIL WITH AMENDMENTS WILL BE USED TO PROVIDE ROOT ZONE FOR THE TREE AND MEDIA FOR PLANT MATERIALS.
- CONTRACTOR SHALL CLEARLY DELINEATE SHRUB AND GROUND COVER BED LAYOUTS FOR APPROVAL BY LANDSCAPE ARCHITECT PRIOR TO EXCAVATION.
- PROVIDE STEEL EDGING AS INDICATED ON THESE DRAWINGS. WHERE NO EDGING IS INDICATED, PROVIDE A SHOVEL CUT EDGE WITHIN GROUND COVER OR SHRUB AREAS THAT ARE ADJACENT TO TURF.
- ALL EXISTING PLANT MATERIAL SHALL BE MAINTAINED IN A HEALTHY GROWING CONDITION AND MUST BE REPLACED WITH PLANT MATERIAL OF SIMILAR VARIETY AND SIZE IF DAMAGED, DESTROYED OR REMOVED OTHER THAN AS INDICATED ON DRAWINGS.
- CONTRACTOR TO MAINTAIN PROPERTY FOR ONE (1) YEAR UPON FINAL ACCEPTANCE OF PLANTING INSTALLATION - REFERENCE SPECS.
- ALL PLANTING AREAS SHALL BE IRRIGATED BY AN UNDERGROUND AUTOMATIC IRRIGATION SYSTEM.

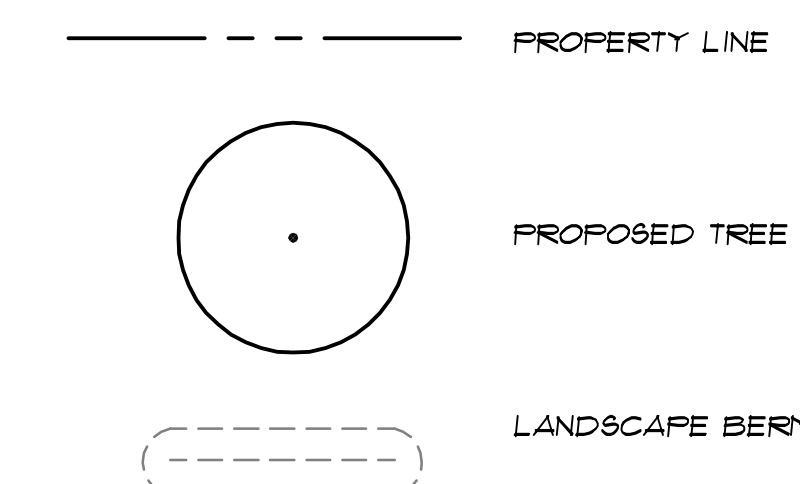
PLANT LIST

PLANT NAME	SIZE	REMARKS	QTY
TREE - SHADE / CANOPY TREE			
PISTACHIA CHINENSIS / CHINESE PISTACHE	B4B, 4 1/2" CAL. MIN. 16' HT. MIN. 9' SPFR. MIN.	SINGLE TRUNK, STRAIGHT LEADER FULL CANOPY WELL-BRANCHED	10
QUERCUS SHUMARDII / SHUMARD OAK - TYPE A	B4B, 4 1/2" CAL. MIN. 16' HT. MIN. 7-9' SPFR.	SINGLE TRUNK, STRAIGHT LEADER FULL CANOPY WELL-BRANCHED	4
QUERCUS SHUMARDII / SHUMARD OAK - TYPE B	B4B, 5 1/2" CAL. MIN. 18' HT. MIN. 10-12' SPFR.	SINGLE TRUNK, STRAIGHT LEADER FULL CANOPY WELL-BRANCHED	16
QUERCUS VIRGINIANA / LIVE OAK - TYPE A	B4B, 4 1/2" CAL. MIN. 16' HT. MIN. 7-9' SPFR.	SINGLE TRUNK, STRAIGHT LEADER FULL CANOPY WELL-BRANCHED	2
QUERCUS VIRGINIANA / LIVE OAK - TYPE B	B4B, 5 1/2" CAL. MIN. 18' HT. MIN. 10-12' SPFR.	SINGLE TRUNK, STRAIGHT LEADER FULL CANOPY WELL-BRANCHED	4
ULMUS PARVIFOLIUS var. EMER II 'EMER II' LACEBARK ELM	B4B, 4 1/2" CAL. MIN. 13' HT. MIN. 9-11' SPFR.	SINGLE TRUNK, STRAIGHT LEADER FULL CANOPY WELL-BRANCHED BY DEEP FORK TREE FARM OR APPROVED EQUAL	14
TREE - ORNAMENTAL / FLOWERING OR SCREENING TREE			
CERCIS CANADENSIS var. TEXENSIS / TEXAS RED BUD	30 GAL. OR B4B 10-12' HT.	FULL, MULTI-TRUNK WITH 3-TRUNKS MIN.	7
CUPRESSOCYPARIS LEYLAND / LEYLAND CYPRRESS	30 GAL. OR B4B 2 - 2 1/2" CAL. 10-12' HT. 4-5' SP.	STRAIGHT LEADER, FULL-TO-GROUND, SPACED AS SHOWN	7
ILEX ATTENUATA 'SAVANNAH' / SAVANNAH HOLLY	100 GAL. OR B4B 3 1/2-4" CAL. 16' HT. MIN. 7' SP. MIN.	SPECIMEN TREES, MATCHED FULL, WELL-BRANCHED, TO BE APPROVED BY ARCHITECT AND LANDSCAPE ARCHITECT PRIOR TO INSTALLATION	4
ILEX 'NELLIE R. STEVENS' / NELLIE R. STEVENS HOLLY	45 GAL. OR B4B 8-10' HT. 4-5' SP.	FULL, WELL-BRANCHED, BUSHY / FULL-TO-THE-GROUND, SPACED AS SHOWN	20
ILEX VOMITORIA / YAUPON HOLLY - TYPE A	30 GAL. OR B4B 6-7' HT. 4-5' SP.	MULTI-TRUNK FULL, WELL-BRANCHED, BUSHY / FULL-TO-THE-GROUND, SPACED AS SHOWN, MIN. 3 MALE TREES	20
ILEX VOMITORIA / YAUPON HOLLY - TYPE B	45 GAL. OR B4B 10-12' HT. 4-5' SP.	MULTI-TRUNK FULL, WELL-BRANCHED, TREE FORM, ALL FEMALE TREES	15
ILEX VOMITORIA / YAUPON HOLLY - TYPE C	45 GAL. OR B4B 10-12' HT. 4-5' SP.	MATCHED, MULTI-TRUNK FULL, WELL-BRANCHED, TREE FORM, ALL FEMALE TREES	5
LAGERSTROMIA INDICA 'DYNAMITE' / 'DYNAMITE' GRAPE MYRTLE	45 GAL. OR B4B 10-12' HT. 4-5' SP.	MULTI-TRUNK FULL, WELL-BRANCHED, TREE FORM, VARIETY ALTERNATE - 'DALLAS RED', 'RED ROCKET'	23
JUNIPERUS VIRGINIANA / EASTERN RED CEDAR	B4B 8-10' HT. 3-4' SP.	FULL-TO-GROUND, SPACED AS SHOWN	10
MAGNOLIA GRANDIFLORA 'DD BLANCHARD' / 'DD BLANCHARD' MAGNOLIA	45 GAL. OR B4B 9-11' HT. 4-5' SP.	STRAIGHT LEADER, FULL-TO-GROUND, SPACED AS SHOWN	9
SHRUB			
ILEX VOMITORIA 'SHILLINGS DUFF' / 'SHILLINGS DUFF' YAUPON HOLLY	5 GAL.	FULL, WELL-ROOTED, TRIANGULAR SPACED AT 2'-6" O.C. OR Ø18 PLANTS / SF	
LEUCOPHYLLUM FRUTESCENS COMPACTUM / COMPACT TEXAS SAGE	7 GAL. 30" HT. MIN. 24" SP. MIN.	FULL, WELL-ROOTED, TRIANGULAR SPACED AT 3'-0" O.C. OR Ø12 PLANTS / SF	
RHAPTOLLEPIA INDICA 'ENCHANTRESS' / 'ENCHANTRESS' INDIAN HAWTHORN	5 GAL. 30" HT.	FULL, WELL-ROOTED, TRIANGULAR SPACED AT 30" O.C. OR Ø18 PLANTS / SF	
GROUND COVER, ORNAMENTAL GRASSES, TURF GRASS			
CAREX MORROUII 'VARIEGATA' / VARIEGATED SEDGE	1 GAL.	FULL, TRIANGULAR SPACED AT 15" O.C. OR Ø138 PLANTS / SF	
LIRIOPE MUSCARI 'BIG BLUE' / 'BIG BLUE' LIRIOPE	4" POT	FULL, TRIANGULAR SPACED AT 12" O.C. OR 115 PLANTS / SF	
LIRIOPE MUSCARI 'EVERGREEN GIANT' / 'EVERGREEN GIANT' LIRIOPE	1 GAL.	FULL, WELL-ROOTED, TRIANGULAR SPACED AT 18" O.C. OR Ø50 PLANTS / SF	
CYNODON DACTYLON 'CELEBRATION' / 'CELEBRATION' BERMUDA GRASS	50D	SOLID 50D	
MATERIALS			
EDGING	HEAVY GAUGE, COMMERCIAL GRADE	CLEANLINE ALUMINUM LANDSCAPE EDGING, 3/8" X 3/16" BY PERMALOC OR APPROVED EQUAL	
AGGREGATE	3 1/2" DEPTH	TEJAS BLACK AS SUPPLIED BY CUSTOM STONE, 2621 JOE FIELD, DALLAS, TX, 9722431144 OR APPROVED EQUAL	
DECORATIVE GRAVEL	MEDIUM SIZE	MEXICAN BEACH PEBBLE (BLACK) AS SUPPLIED BY CUSTOM STONE, 2621 JOE FIELD, DALLAS, TX, 9722431144 OR APPROVED EQUAL	

NOTE: CONTRACTOR RESPONSIBLE TO VERIFY ALL PLANT QUANTITIES PER THE PLANTING PLAN. ALL PLANTS MUST MEET MIN. HEIGHT, SPREAD, CALIPER AND CONTAINER SIZES LISTED.



PLANTING LEGEND



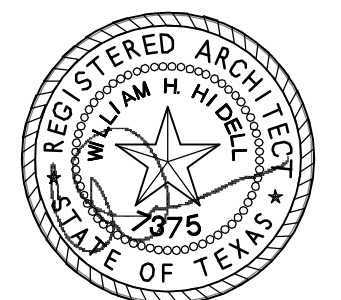
1 LANDSCAPE PLANTING PLAN - BERMS
1" = 30'-0"



ADDISON, TX

HIDELL ASSOCIATES ARCHITECTS

3033 KELLWAY DRIVE, SUITE 120
CARROLLTON, TEXAS 75006 (972) 416-4666
FAX (972) 416-0169 E-MAIL thans@hidell.com



11.06.2009

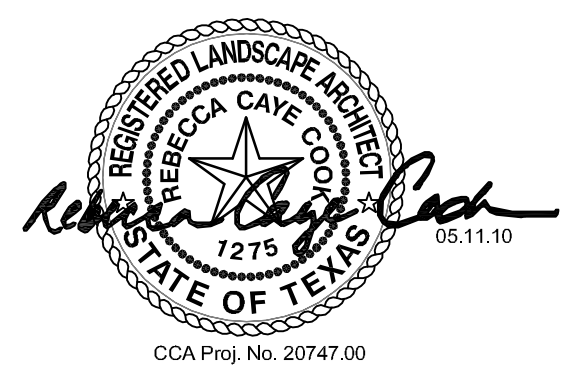
OWNER
JW OPERATING COMPANY
15508 WRIGHT BROTHERS DR.
ADDISON, TX 75001
PHONE: (972) 233-1191
FAX: (972) 991-0704
ggradick@jwope.com

CIVIL ENGINEER
PACHECO KOCH CONSULTING ENGINEERS
8350 N CENTRAL EXPRESSWAY SUITE 1000
DALLAS, TX 75208-1612
PHONE: (972) 235-0031
FAX: (972) 235-9544

STRUCTURAL ENGINEER
R.L. GOODSON
5445 LA SIERRA, SUITE 300-LB 17
DALLAS, TX 75231
PHONE: (214) 738-8100
FAX: (214) 739-6354

MEP ENGINEER
DASHARATHI ENGINEERING
921 INDUSTRIAL BLVD. SUITE 100
DALLAS, TX 75207
PHONE: (214) 720-1005
FAX: (214) 720-1006

LANDSCAPE ARCHITECT
CAYE COOK & ASSOCIATES
12700 HILLCREST ROAD, SUITE 149
DALLAS, TX 75230
PHONE: (214) 398-0105
FAX: (214) 373-0170
barbara@cclandscapearch.com



TITLE

PLANTING PLAN - LANDSCAPE BERMS

REVISIONS

05.11.2010 PLANTING MODS.

JOB NO. 26010

Issue Date: 04/23/2010

Drawn By: bb

Checked By: cc

SHEET NO.

AS-BUILTS

L-1.2

ISSUE FOR REVIEW ONLY