

GAYLORD PROPERTIES, INC.
(FORMERLY OPUBCO PROPERTIES, INC.)
VOL. 82020, PG. 0688
D.R.D.C.T.

JULIAN AVENUE

CLARA STREET

ADDISON CIRCLE
(FORMERLY WILDRED STREET)

JULIAN'S ADDITION
VOL. 1, PG. 538
M.R.D.C.T.

JULIAN'S ADDITION
VOL. 1, PG. 538
M.R.D.C.T.

JULIAN'S ADDITION
VOL. 1, PG. 538
M.R.D.C.T.

JULIAN'S ADDITION
VOL. 1, PG. 538
M.R.D.C.T.

GAYLORD PROPERTIES, INC.
(FORMERLY OPUBCO PROPERTIES, INC.)
VOL. 84151, PG. 3619
D.R.D.C.T.

GAYLORD PROPERTIES, INC.
(FORMERLY OPUBCO PROPERTIES, INC.)
VOL. 82020, PG. 0684
D.R.D.C.T.

BLOCK A
3.051 ACRES

BLOCK B
8.462 ACRES

BLOCK C
0.375 ACRES

QUORUM DRIVE
80.0' R.O.W.

GOODMAN AVENUE

MORRIS AVENUE

PASCHAL PLACE

WITT PLACE

FINAL PLAT
LOT 1 BLOCK 1
ADDISON CONFERENCE CENTER-
ADDISON CENTRE THEATRE
VOL. 90241, PG. 2807
D.R.D.C.T.

POINT OF BEGINNING
1/2" IRON ROD FND.

POINT OF COMMENCING
BLOCK C

POINT OF BEGINNING

SCAN TO DISC

NOTE:
REFER TO SHEET 2 OF

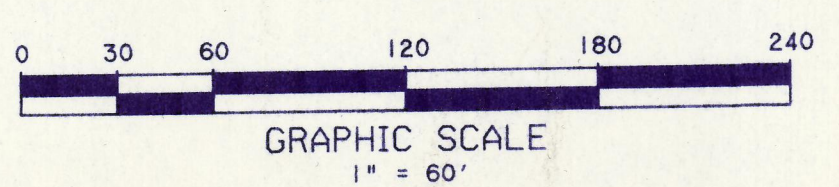
NOTE:
THIS PLAT INCLUDES THE LIMITS OF THE BLOCK BY THIS PLAT.

NOTE:
ALL EASEMENTS INDICATED AS "TEMPORARY" SHOWN HEREON ARE TO REMAIN IN AFFECT UNTIL EXPRESSLY ABANDONED. SAID EASEMENTS MAY BE ABANDONED BY NOTATION ON FUTURE PLATS OF THE AFFECTED PROPERTY OR BY OTHER LEGAL DOCUMENTS.

GAYLORD PROPERTIES, INC.
(FORMERLY OPUBCO PROPERTIES, INC.)
VOL. 82020, PG. 0684
D.R.D.C.T.

VOLUME 97101
PAGE 5801

BASIS OF BEARING:
BEARING OF N 89°49'12" W ALONG THE NORTH
RIGHT-OF-WAY LINE OF WILDRED STREET AS
RECORDED IN VOLUME 95249, PAGE 1591 OF
THE DEED RECORDS OF DALLAS COUNTY, TEXAS.



LEGEND

- * IRS 1/2" IRON ROD SET WITH "HUITT-ZOLLARS" CAP
- * IRF 1/2" IRON ROD FOUND WITH "HUITT-ZOLLARS" CAP
- TUE TEXAS UTILITIES ELECTRIC COMPANY
- SWT SOUTHWESTERN BELL TELEPHONE COMPANY

AREA SUMMARY		
BLOCK	LOT No.	ACREAGE
A	1	2.808 AC.
A	ROW	0.243 AC.
B	1	1.849 AC.
B	2	1.360 AC.
B	3	0.885 AC.
B	4	1.953 AC.
B	ROW	2.415 AC.
C	ROW	0.375 AC.
TOTAL		11.888 AC.

COURSE	BEARING	DISTANCE
L1	N82°48'27"W	17.13'
L2	S89°58'47"W	46.39'
L3	N00°10'48"E	16.03'

CURVE TABLE					
CURVE NO.	CENTRAL ANGLE	ARC LENGTH	RADIUS	CHORD BEARING	CHORD LENGTH
C1	07°00'45"	94.98'	776.03'	S86°18'50"E	94.92'
C2	04°21'05"	9.87'	130.00'	S22°56'14"W	9.87'
C3	07°12'46"	106.57'	846.53'	N86°24'50"W	106.50'
C4	00°09'45"	2.43'	856.03'	N89°44'25"W	2.43'
C5	03°17'22"	84.53'	1472.39'	N02°33'54"E	84.53'
C6	03°30'08"	90.80'	1485.39'	S02°40'17"W	90.78'
C7	06°13'24"	14.12'	130.00'	N62°46'20"W	14.11'

FINAL PLAT
ADDISON CIRCLE PHASE I
11.888 ACRES IN THREE BLOCKS
SITUATED IN THE
G. W. FISHER SURVEY, ABSTRACT No. 482
TOWN OF ADDISON
DALLAS COUNTY, TEXAS

PREPARED FOR
COLUMBUS REALTY TRUST
15851 DALLAS PARKWAY
SUITE 855
DALLAS, TEXAS 75248

APRIL 10, 1997
Sheet No. 1 OF 3
Project No. 01-1932-01

HUITT-ZOLLARS
3131 MCKINNEY AVENUE/SUITE 600
DALLAS, TEXAS 75214-871-3311
DALLAS / FORT WORTH / PHOENIX / ORANGE COUNTY

FILED
MAY 23 PM 3:47
DALLAS COUNTY

UNITED STATES POSTAL SERVICE
VOL. 98078, PG. 357
D.R.D.C.T.

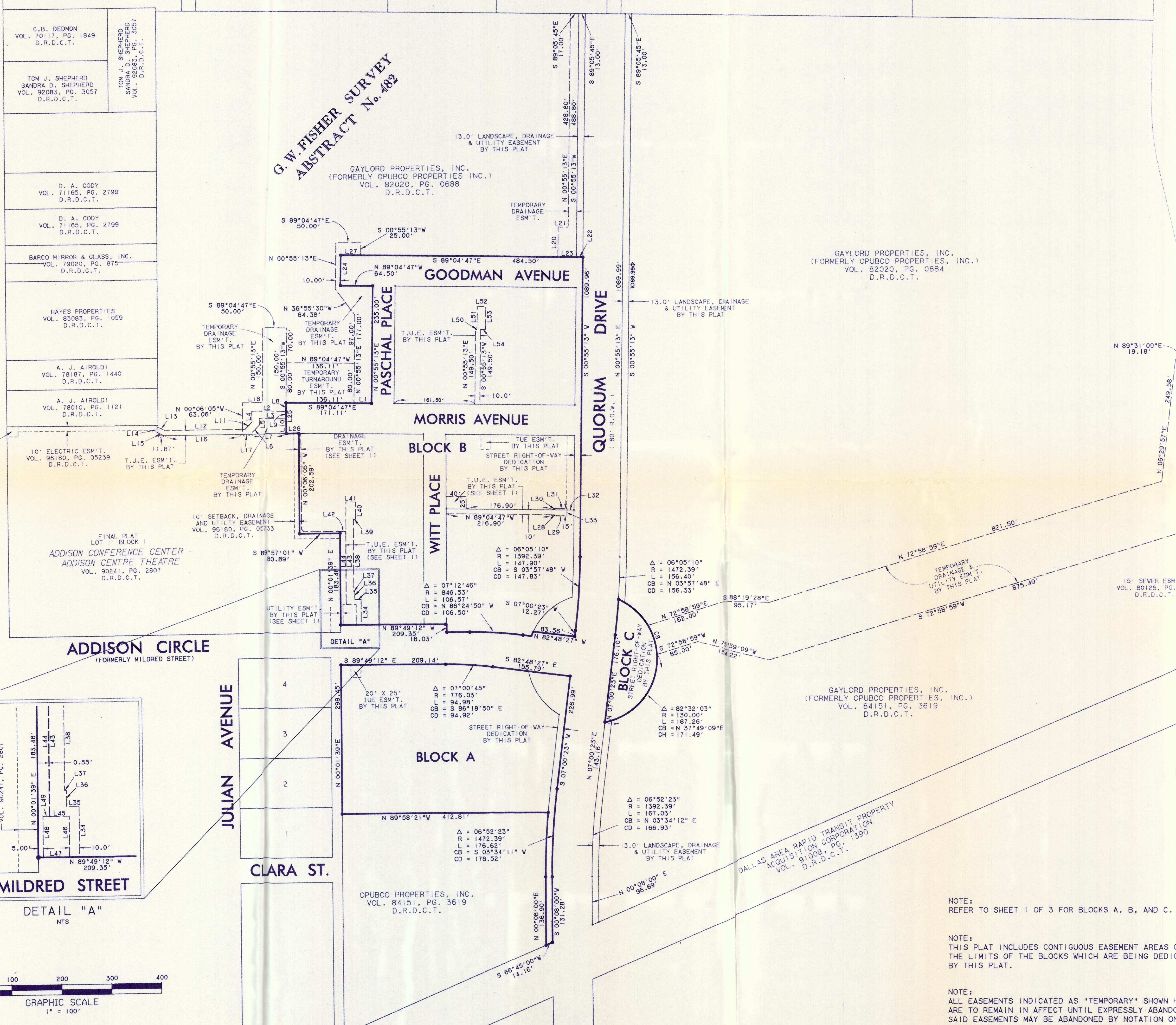
HOPE INVESTMENTS, LTD.
VOL. 91248, PG. 2972
D.R.D.C.T.

HOPE JOINT VENTURE
VOL. 78194, PG. 1737
D.R.D.C.T.

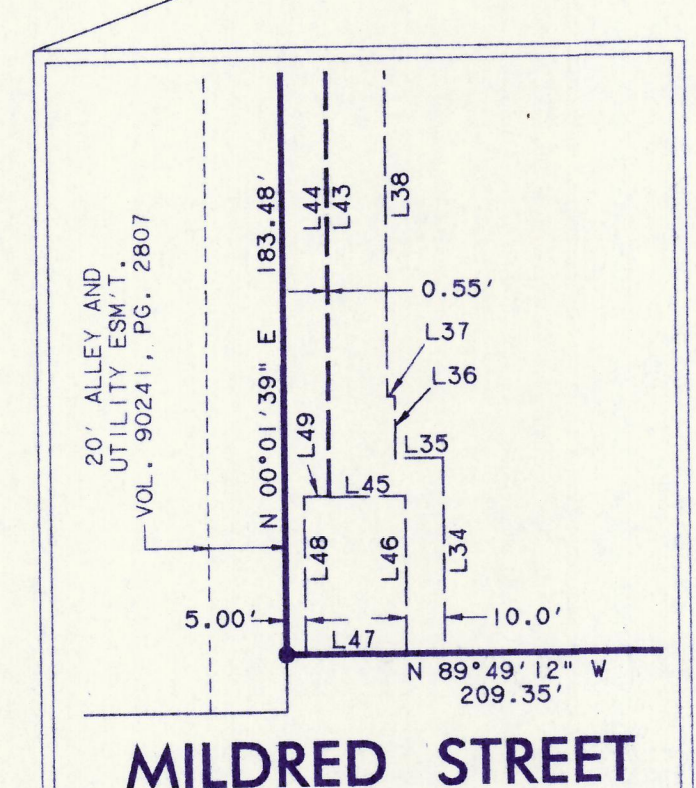
QUORUM EAST JOINT VENTURE
VOL. 93022, PG. 5219
D.R.D.C.T.

15851 DALLAS NORTH PARKWAY ADDN.
VOL. 85021, PG. 1686
D.R.D.C.T.

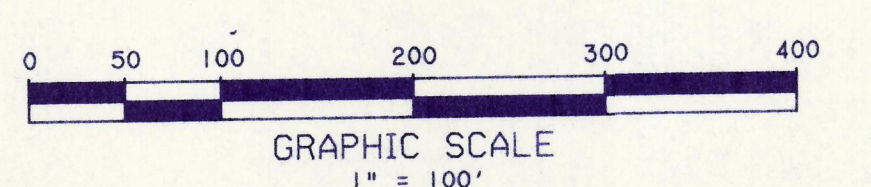
**G. W. FISHER SURVEY
ABSTRACT No. 482**



COURSE	BEARING	DISTANCE
L1	N 89°04'47"W	35.00'
L2	N 89°04'47"W	71.33'
L3	N 89°04'47"W	56.32'
L4	S 00°06'05"E	21.94'
L5	S 00°06'05"E	12.89'
L6	S 44°54'53"W	24.85'
L7	N 89°53'55"E	73.89'
L8	N 00°06'05"W	17.00'
L9	N 00°06'05"W	15.00'
L10	N 00°06'05"W	29.45'
L11	S 44°54'53"W	19.50'
L12	S 89°53'55"W	160.27'
L13	N 63°55'54"W	15.71'
L14	S 00°12'25"W	11.11'
L15	S 63°55'54"E	13.19'
L16	S 89°53'55"W	157.72'
L17	N 89°53'55"E	16.09'
L18	S 89°04'47"E	40.00'
L19	S 89°53'55"W	30.00'
L20	N 00°55'13"E	60.00'
L21	S 89°04'47"E	20.00'
L22	N 89°04'47"W	13.00'
L23	N 89°04'47"W	37.00'
L24	N 00°55'13"W	60.00'
L25	N 00°06'05"W	61.46'
L26	S 89°53'55"W	25.00'
L27	S 89°04'47"E	40.00'
L28	S 00°55'13"W	2.00'
L29	S 89°04'47"E	25.00'
L30	N 00°55'13"E	3.00'
L31	S 89°04'47"E	25.00'
L32	S 89°04'47"E	14.00'
L33	N 00°55'13"E	12.00'
L34	N 00°10'48"E	51.00'
L35	N 89°49'12"W	12.50'
L36	N 00°10'48"E	16.00'
L37	N 89°49'12"W	2.00'
L38	N 00°10'48"E	145.00'
L39	S 89°49'12"E	4.00'
L40	N 00°10'48"E	35.00'
L41	N 89°49'12"W	19.00'
L42	S 89°57'01"W	11.45'
L43	S 00°10'48"W	206.00'
L44	N 00°10'48"E	146.38'
L45	S 89°49'12"E	19.50'
L46	S 00°10'48"W	41.00'
L47	N 89°49'12"W	26.00'
L48	N 00°01'39"E	41.15'
L49	S 89°49'12"E	6.06'
L50	S 89°04'47"E	3.00'
L51	N 00°55'13"W	46.00'
L52	S 89°04'47"E	17.00'
L53	S 00°55'13"W	46.00'
L54	N 89°04'47"W	10.00'



DETAIL "A"
NTS



CURVE NO.	CENTRAL ANGLE	ARC LENGTH	RADIUS	CHORD BEARING	CHORD LENGTH
CB	27°08'17"	61.57'	130.00'	N17°01'01"W	61.00'

NOTE:
REFER TO SHEET 1 OF 3 FOR BLOCKS A, B, AND C.

NOTE:
THIS PLAT INCLUDES CONTIGUOUS EASEMENT AREAS OUTSIDE THE LIMITS OF THE BLOCKS WHICH ARE BEING DEDICATED BY THIS PLAT.

NOTE:
ALL EASEMENTS INDICATED AS "TEMPORARY" SHOWN HEREON ARE TO REMAIN IN EFFECT UNTIL EXPRESSLY ABANDONED. SAID EASEMENTS MAY BE ABANDONED BY NOTATION ON FUTURE PLATS OF THE AFFECTED PROPERTY OR BY OTHER LEGAL DOCUMENTS.

**FINAL PLAT
ADDISON CIRCLE PHASE I
11.888 ACRES IN THREE BLOCKS
SITUATED IN THE
G. W. FISHER SURVEY, ABSTRACT No. 482
TOWN OF ADDISON
DALLAS COUNTY, TEXAS**

PREPARED FOR:
COLUMBUS REALTY TRUST
15851 DALLAS PARKWAY
SUITE 855
DALLAS, TEXAS 75248

APRIL 10, 1997
Sheet No. 2 OF 3
Project No. 01-1932-01

HUITT - ZOLLARS
3131 MCKINNEY AVENUE/SUITE 600
DALLAS, TEXAS 75214-871-3311
DALLAS / FORT WORTH / PHOENIX / ORANGE COUNTY

57 MAY 23 PM 3:47
FILED
DALLAS COUNTY CLERK
DALLAS, TEXAS