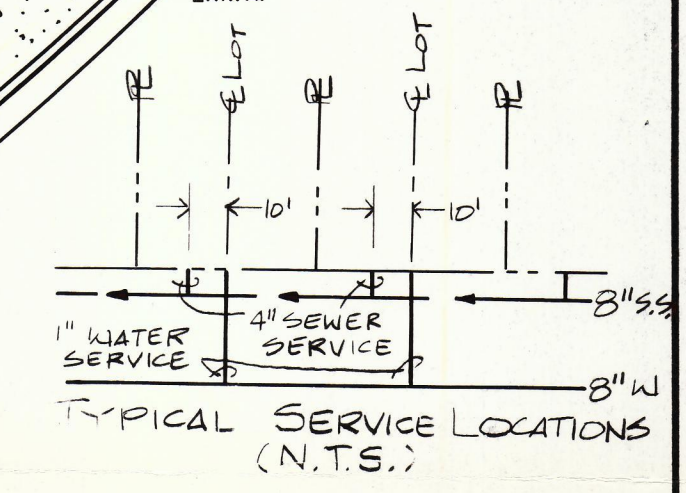


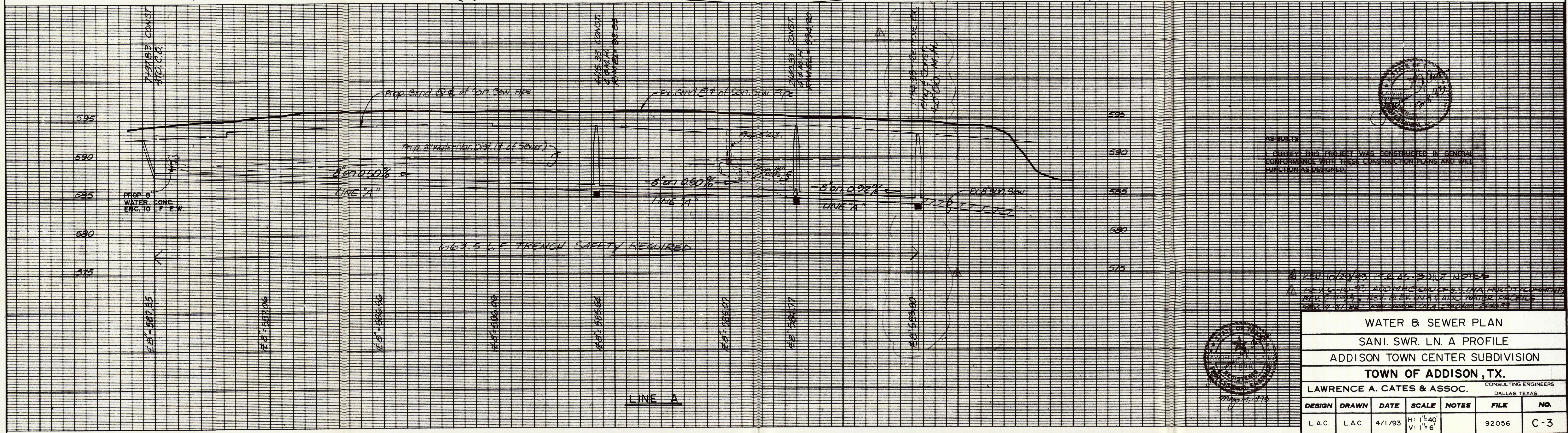
NOTE: CONTRACTOR TO CONTACT TOWN OF ADDISON PUBLIC WORKS DEPT. 48 HRS. PRIOR TO BEGINNING CONSTRUCTION. CONTACT BRUCE ELLIS OR JOHN BAUMGARTNER, RE. AT (214) 450-2886

CAUTION: CONTRACTOR TO CONTACT THE FOLLOWING UTILITY COMPANIES 48 HRS. PRIOR TO CONSTRUCTION
 T.U. ELECTRIC BARRY ANDERSON (214) 888-1311
 G.T.E. CABLE LOCATE 1-800-344-8377
 L.S.G. LINE LOCATE (214) 487-3800
 S.W.B.T. DIAL "0" ASK OPERATOR FOR ENTERPRISE 9800

- LEGEND
- EXIST. SANI. SWR. W/ MANHOLE
 - PROP. EX. WATER LINE W/ VALVE
 - +— PROP. EX. FIRE HYDRANT W/ VALVE
 - +— EX. STORM SEWER
 - +— PROP. EX. STORM SWR. TO BE REMOVED
 - UTILITY/IRRIGATION CONDUIT



BENCHMARK: 4\"/>
 SOUTH SIDE OF BELT LINE ROAD 70'± WEST OF COMMERCIAL DRIVE
 ELEV. 580.56'
 NOTE: SEE SHT. GN-12 FOR WATER & SANITARY SEWER GENERAL NOTES



AS-SUBJECT TO THIS PROJECT WAS CONSTRUCTED IN GENERAL CONFORMANCE WITH THESE CONSTRUCTION PLANS AND WILL FUNCTION AS DESIGNED.

REV. 10/20/93 PER AS-BUILT NOTES
 REV. 04-10-93 ADDING MANHOLE TO S.S. LINA PER CITY COMMENTS
 REV. 01-11-93 REV. GROUND INVA. SIDE WATER PROFILE
 REV. 01-11-93 REV. GROUND EX. STORM SWER

WATER & SEWER PLAN						
SANI. SWR. LN. A PROFILE						
ADDISON TOWN CENTER SUBDIVISION						
TOWN OF ADDISON, TX.						
LAWRENCE A. CATES & ASSOC.					CONSULTING ENGINEERS DALLAS, TEXAS	
DESIGN	DRAWN	DATE	SCALE	NOTES	FILE	NO.
L.A.C.	L.A.C.	4/1/93	H: 1\"/>			