

CURVE TABLE					
CURVE	DELTA	RADIUS	TANGENT LENGTH	CHORD	
C1	90°00'00"	20.50'	20.50'	32.20'	S19°51'17"W 28.99'
C2	90°00'00"	20.50'	20.50'	32.20'	S70°08'43"E 28.99'
C3	42°28'20"	20.00'	7.77'	14.83'	N43°37'07"E 14.49'
C28	57°14'27"	69.50'	37.92'	69.43'	N20°09'42"E 66.58'
C29	54°31'03"	100.00'	51.52'	95.15'	N21°31'24"E 91.80'
C30	35°12'35"	250.00'	79.33'	153.63'	N68°23'12"E 151.23'
C31	101°17'10"	150.00'	13.50'	26.93'	S78°50'55"W 26.89'
C37	28°08'06"	110.00'	27.56'	54.02'	S27°09'01"E 53.47'
C38	90°00'00"	37.00'	37.00'	58.12'	S86°13'05"E 52.33'
C39	43°18'58"	32.50'	12.89'	24.55'	S19°34'36"E 23.97'
C40	90°00'00"	32.00'	32.00'	50.27'	S86°13'05"E 45.25'
C41	32°05'59"	20.00'	6.33'	12.25'	N68°23'12"E 12.06'
C42	16°04'22"	200.00'	28.24'	56.10'	S56°49'06"W 55.92'
C43	90°00'00"	38.00'	38.00'	59.69'	N19°51'17"E 53.74'
C44	26°15'04"	26.00'	6.06'	11.91'	N51°43'45"E 11.81'
C45	16°04'22"	200.00'	28.24'	56.10'	S56°49'06"W 55.92'
C46	67°21'23"	37.00'	24.65'	43.50'	N31°10'36"E 41.04'
C47	22°33'37"	110.00'	22.02'	43.47'	N13°49'24"W 43.19'
C48	23°34'54"	86.50'	18.06'	35.60'	N13°21'16"W 35.35'
C49	9°54'41"	200.00'	17.34'	34.60'	N30°06'03"W 34.55'
C50	17°18'28"	200.00'	30.47'	60.47'	S26°23'40"E 60.24'
C51	61°00'46"	32.50'	19.15'	34.61'	S34°20'54"W 33.00'
C52	61°00'46"	32.50'	19.15'	34.61'	N34°20'54"E 33.00'
C53	18°04'22"	188.00'	26.54'	52.74'	S56°49'06"W 52.57'
C54	16°04'22"	212.00'	28.93'	59.47'	S56°49'06"W 59.28'
C55	16°04'22"	169.50'	23.93'	47.55'	S56°49'06"W 47.39'
C56	16°04'22"	230.50'	32.54'	64.66'	S56°49'06"W 64.45'
C57	13°23'01"	55.00'	6.45'	12.85'	S58°09'47"W 12.82'
C58	61°00'46"	20.00'	11.78'	21.30'	N34°20'54"E 20.31'
C59	61°00'46"	45.00'	26.51'	47.92'	S34°20'54"W 45.69'

LINE TABLE		
LINE	BEARING	LENGTH
T1	N25°08'43"W	64.00'
T2	N64°51'17"E	86.15'
T3	S25°08'43"E	65.00'
T4	N64°51'17"E	69.79'
T5	S25°08'43"E	65.00'
T6	N25°08'43"W	57.84'
T31	S08°27'32"E	38.98'
T32	N05°44'08"W	24.63'
T33	N41°13'05"E	35.53'
T34	S86°13'05"E	14.14'
T35	S48°46'55"W	10.79'
T36	S03°46'55"W	14.14'
T37	S06°40'31"W	16.09'
T38	N79°54'27"W	18.73'
T43	S13°04'59"E	18.77'
T44	S15°09'41"W	11.07'
T45	S86°13'05"E	7.07'
T46	S03°46'55"W	7.07'
T47	N02°03'53"E	23.30'
T48	S41°13'05"E	37.32'
T49	N25°08'43"W	60.50'
T50	N70°08'43"W	7.07'
T51	N19°51'17"E	7.07'
T52	S41°13'05"E	52.36'
T53	S41°13'05"E	56.00'
T54	S41°13'05"E	56.00'
T55	S41°13'05"E	85.00'
T56	S41°13'05"E	85.00'
T57	S41°13'05"E	56.01'
T58	N25°08'43"W	57.94'
T59	N25°08'43"W	53.32'
T60	N12°19'37"E	79.24'
T61	N04°50'18"W	33.53'
T62	S04°50'18"E	34.75'
T63	S12°21'11"W	67.25'
T64	N64°51'17"E	122.60'
T65	S38°31'43"E	10.00'
T66	N64°51'17"E	92.29'
T67	N64°51'17"E	109.10'
T68	S24°59'55"E	41.36'
T69	S24°59'55"E	34.37'
T70	N25°08'43"W	51.53'
T71	N70°08'43"W	12.07'
T72	S64°51'17"W	30.26'
T73	N88°23'22"E	23.88'
T74	N88°23'22"E	28.45'
T75	N31°17'08"W	5.00'
T76	N58°42'52"E	29.80'
T77	N88°23'22"E	24.16'
T78	S64°51'17"W	28.41'
T79	N70°08'43"W	14.73'
T80	N25°08'43"W	52.19'

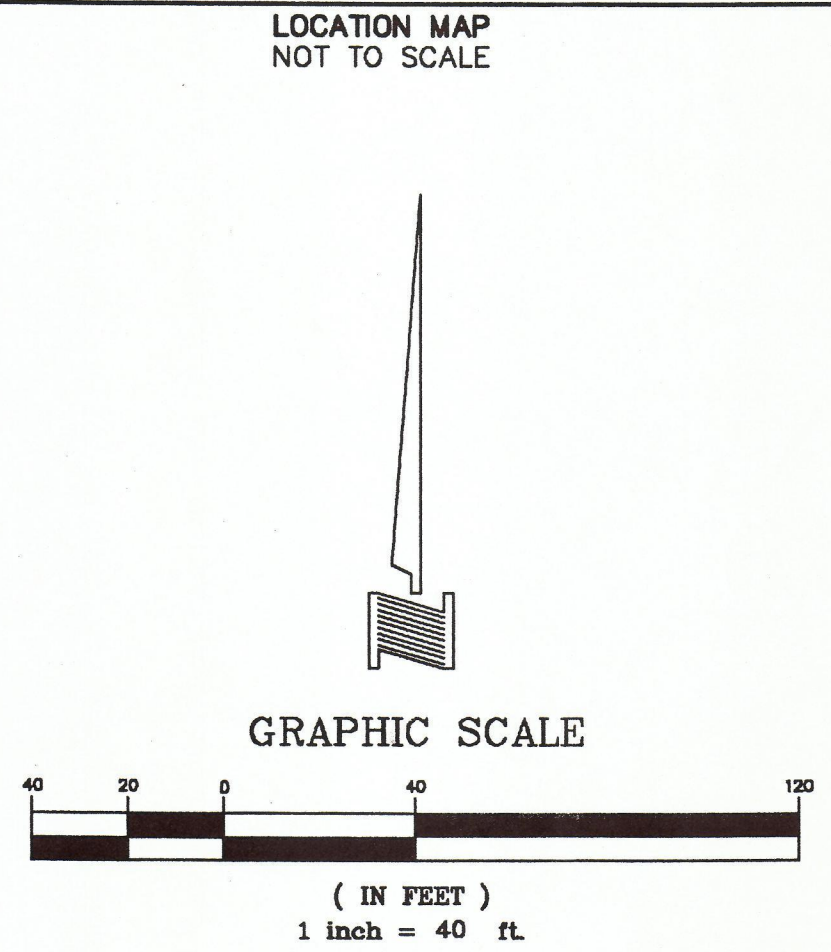
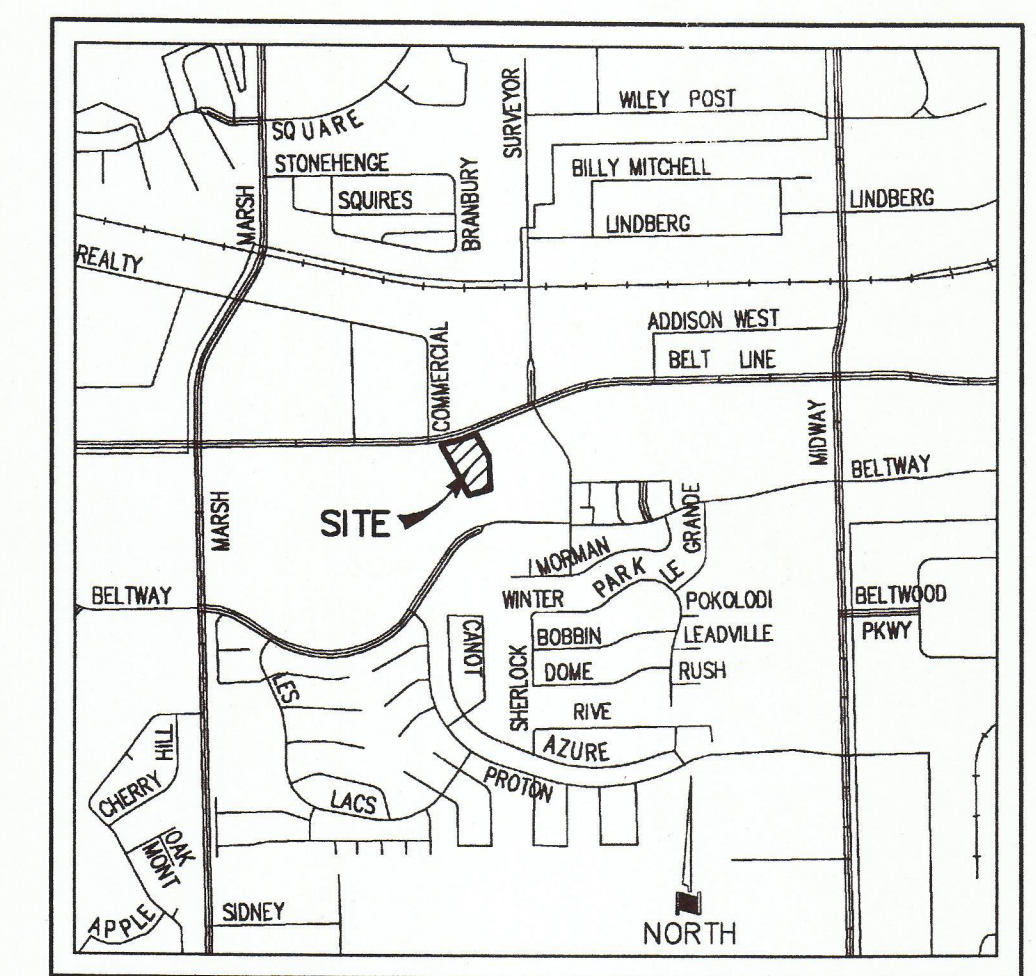
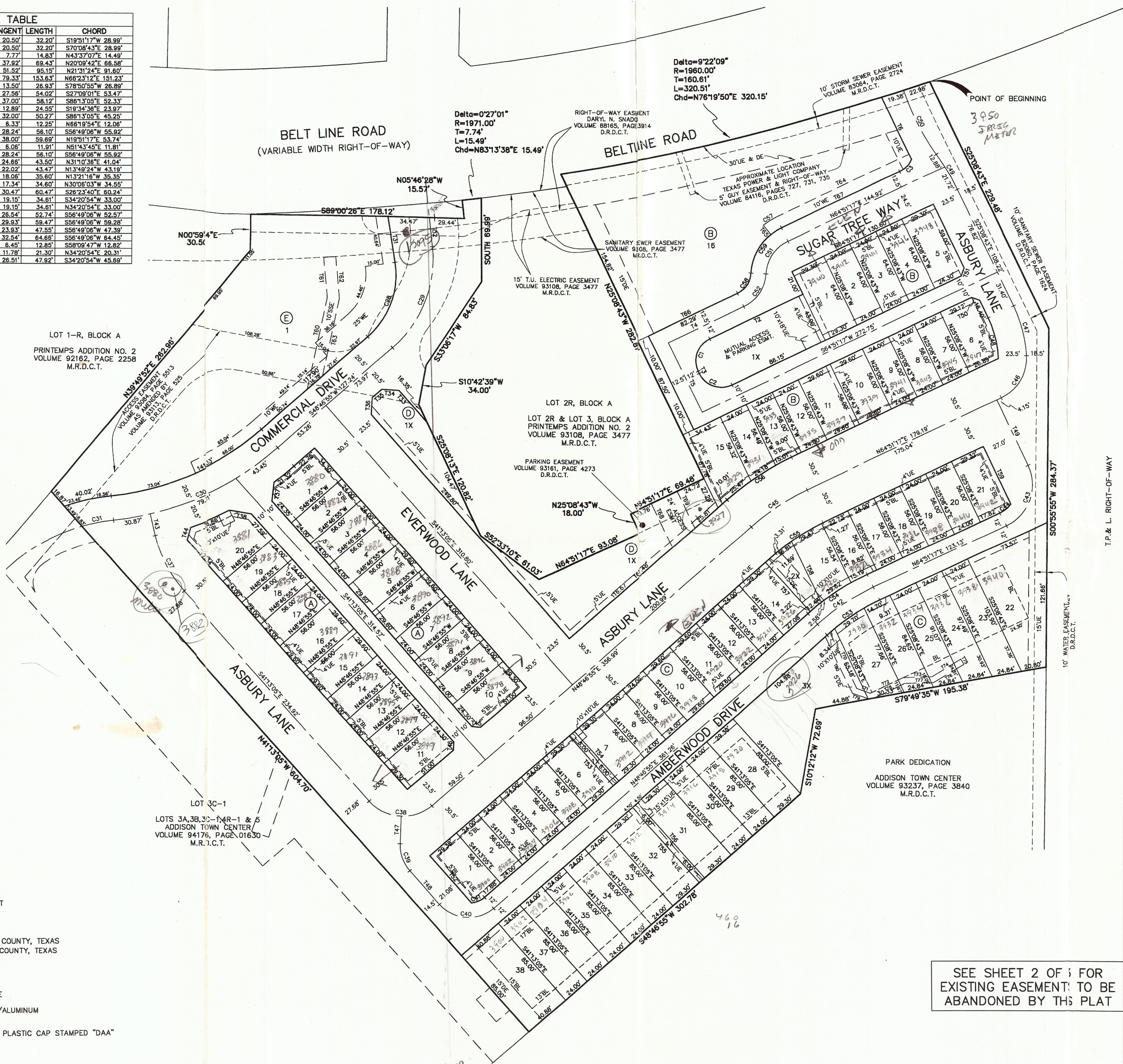
LOT 1-R, BLOCK A  
 PRINTemps ADDITION NO. 2  
 VOLUME 92162, PAGE 2258  
 M.R.D.C.T.

LOT 2R, BLOCK A  
 LOT 2R & LOT 3, BLOCK A  
 PRINTemps ADDITION NO. 2  
 VOLUME 93108, PAGE 3477  
 M.R.D.C.T.

LOT 3C-1  
 LOTS 3A, 3B, 3C-1, 4R-1 & 5  
 ADDISON TOWN CENTER  
 VOLUME 94176, PAGE 01630  
 M.R.D.C.T.

- LEGEND**
- BL = BUILDING LINE
  - DE = DRAINAGE EASEMENT
  - HOA = HOMEOWNER'S ASSOCIATION
  - SUE = SIDEWALK & UTILITY EASEMENT
  - SSE = SANITARY SEWER EASEMENT
  - UE = UTILITY EASEMENT
  - WE = WATER EASEMENT
  - D.R.D.C.T. = DEED RECORDS, DALLAS COUNTY, TEXAS
  - M.R.D.C.T. = MAP RECORDS, DALLAS COUNTY, TEXAS
  - DOC# = DOCUMENT NUMBER
  - IRF = IRON ROD FOUND
  - IPF = IRON PIPE FOUND
  - ◇ = DENOTES STREET NAME CHANGE
  - ⊙ = CONCRETE MONUMENT FOUND W/ALUMINUM DISK STAMPED AS NOTED
  - = 1/2" IRON ROD SET W/ YELLOW PLASTIC CAP STAMPED "DAA"

REVISED: September 26, 2007



73 LOTS ~ 8.140 ACRES  
 FINAL PLAT  
**ASBURY CIRCLE**  
 BEING A REPLAT OF  
 PART OF LES LACS PLAZA SUBDIVISION  
 AND  
 SKIP BAILEY ADDITION  
 LOT 1 AND LOT 2, BLOCK A  
 AND  
 LOT 4R-1  
 ADDISON TOWN CENTER  
 LOTS 3A, 3B, 3C-1, 4R-1 & 5  
 AN ADDITION TO THE CITY OF ADDISON  
 THOMAS L. CHENOWITH SURVEY, ABSTRACT NO. 273  
 DALLAS COUNTY, TEXAS

AUGUST 2006 SCALE: 1"=40'  
 OWNER  
 ASHTON DALLAS RESIDENTIAL, L.L.C.  
 13800 MONFORT DRIVE SUITE 100  
 972-490-3255 DALLAS, TEXAS 75240  
 ENGINEER

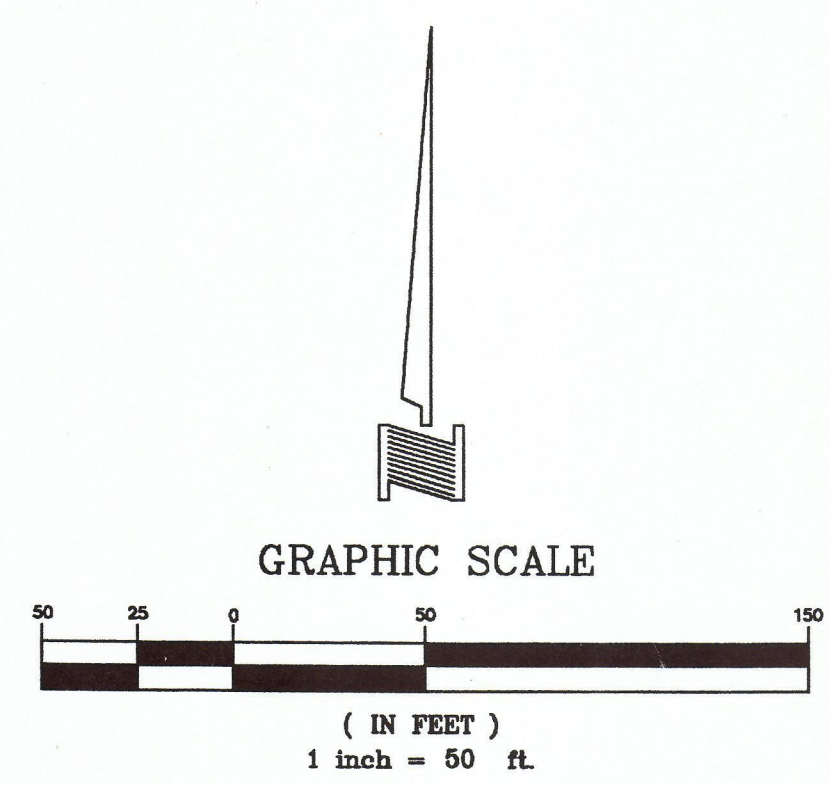
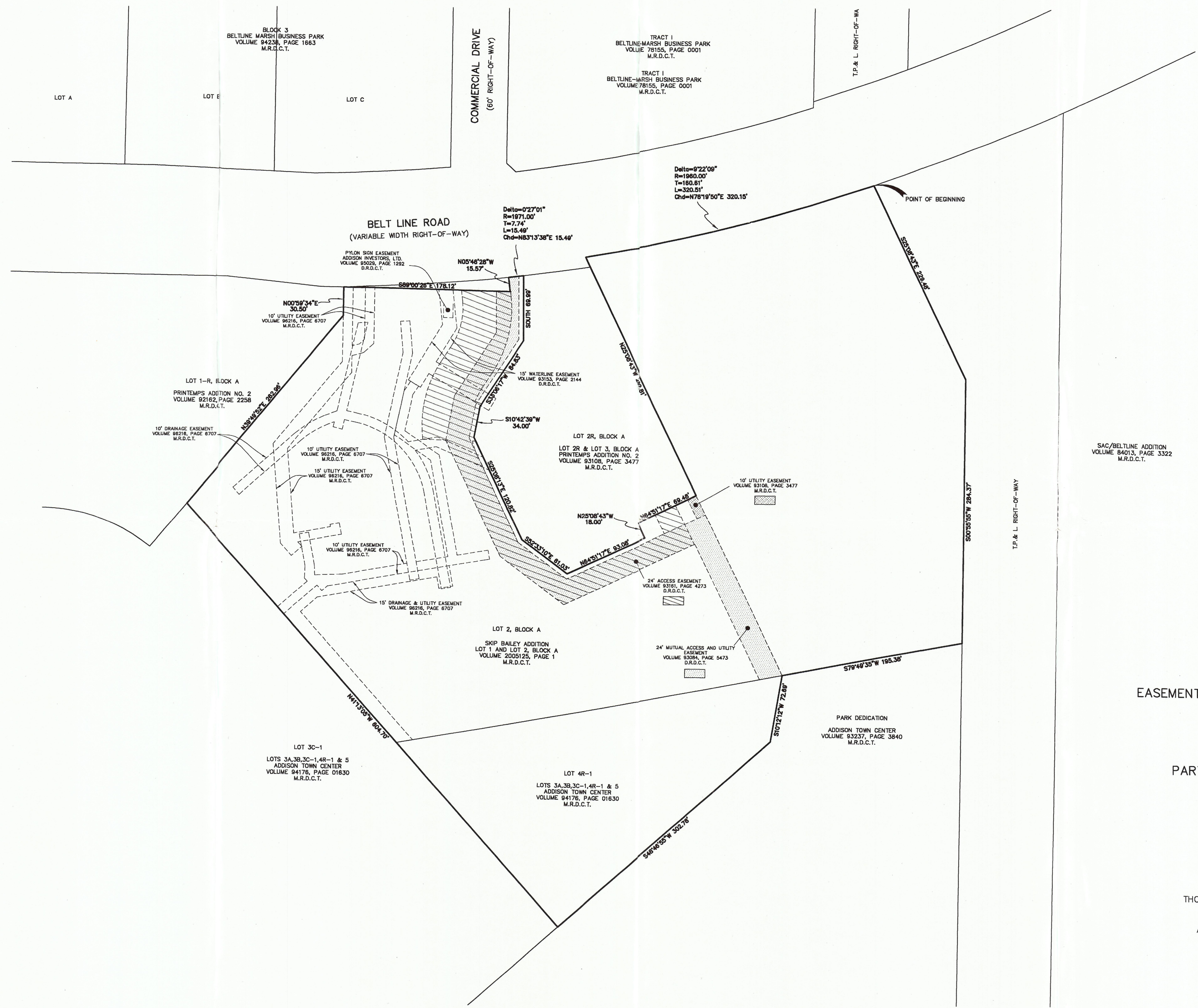
**DOWDEY, ANDERSON & ASSOCIATES, INC.**  
 5225 Village Creek Drive, Suite 200 Plano, Texas 75093 972-931-0694

SEE SHEET 2 OF 3 FOR  
 EXISTING EASEMENTS TO BE  
 ABANDONED BY THIS PLAT

DOWDEY, ANDERSON & ASSOCIATES, INC.

ASBURY CIRCLE





SAC/BELTLINE ADDITION  
VOLUME 84013, PAGE 3322  
M.R.D.C.T.

EASEMENTS TO BE ABANDONED BY THIS PLAT  
73 LOTS ~ 8.140 ACRES  
FINAL PLAT  
ASBURY CIRCLE  
BEING A REPLAT OF  
PART OF LES LACS PLAZA SUBDIVISION  
AND  
SKIP BAILEY ADDITION  
LOT 1 AND LOT 2, BLOCK A  
AND  
LOT 4R-1  
ADDISON TOWN CENTER  
LOTS 3A,3B,3C-1,4R-1 & 5  
AN ADDITION TO THE CITY OF ADDISON  
THOMAS L. CHENOWITH SURVEY, ABSTRACT NO. 273  
DALLAS COUNTY, TEXAS  
AUGUST 2006 SCALE: 1"=40'  
OWNER  
ASHTON DALLAS RESIDENTIAL, L.L.C.  
13800 MONFORT DRIVE SUITE 100  
972-490-3255 DALLAS, TEXAS 75240  
ENGINEER  
DOWDEY, ANDERSON & ASSOCIATES, INC.  
5225 Village Creek Drive, Suite 200 Plano, Texas 75093 972-931-0694



