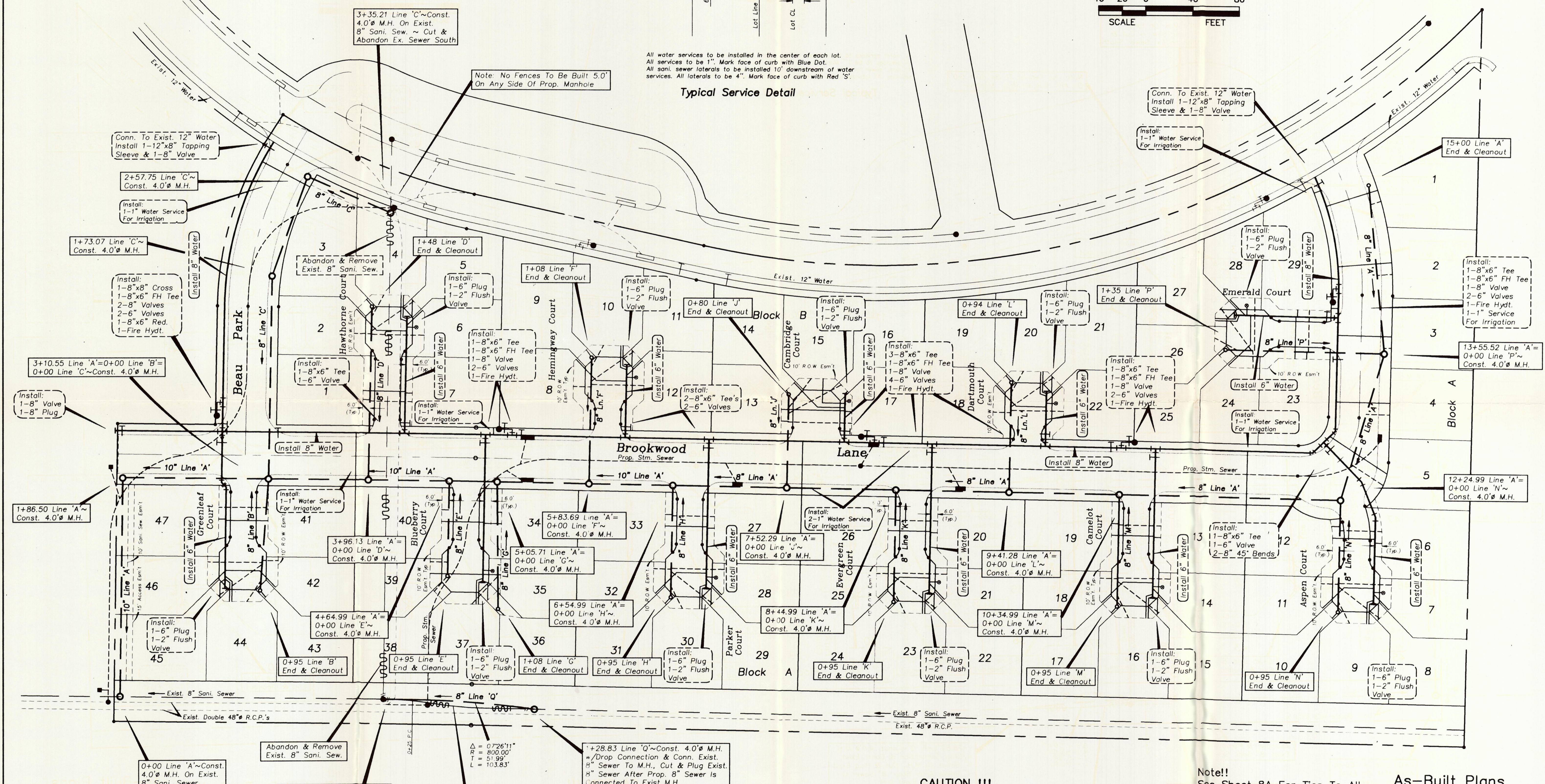
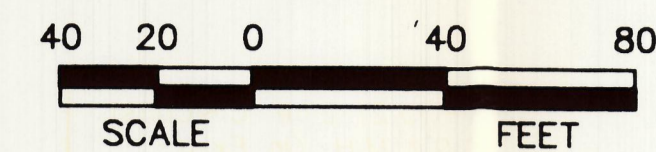
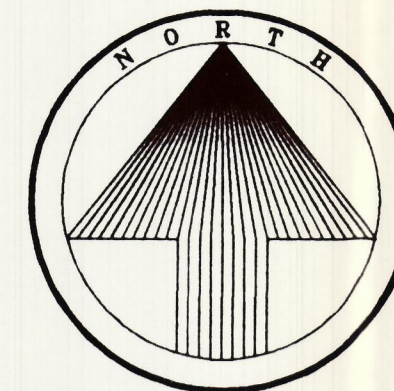


All water services to be installed in the center of each lot.
 All services to be 1" Mark face of curb with Blue Dot.
 All sani. sewer laterals to be installed 10' downstream of water services. All laterals to be 4". Mark face of curb with Red 'S'.

Typical Service Detail



Notes:

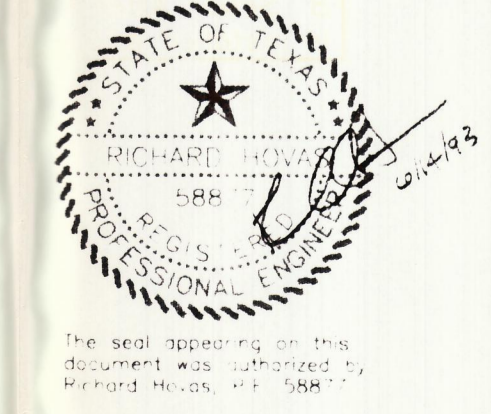
1. Trench Safety Plans & Spec's To Be Furnished By Utility Contractor Prior To Start Of Construction.
2. Proposed 10" Sani. Sewer To Be Installed For Grade Purposes Only.
3. Adjust All Sanitary Sewer M.H.'s To Grade Within Greenbelt Area.

CAUTION !!!
 EXISTING UTILITIES

EXISTING UTILITIES AND UNDERGROUND FACILITIES INDICATED ON THESE PLANS HAVE BEEN LOCATED FROM REFERENCE INFORMATION. IT SHALL BE THE RESPONSIBILITY OF THE CONTRACTOR TO VERIFY BOTH HORIZONTALLY AND VERTICALLY THE LOCATION OF ALL EXISTING UTILITIES AND UNDERGROUND FACILITIES PRIOR TO CONSTRUCTION. TO TAKE NECESSARY PRECAUTIONS IN ORDER TO PROTECT ALL FACILITIES ENCOUNTERED. THE CONTRACTOR SHALL PRESERVE AND PROTECT ALL EXISTING UTILITIES FROM DAMAGE DURING CONSTRUCTION.

Note!!
 See Sheet 8A For Ties To All Valve, Fire Hydt's, & Manholes.

As-Built Plans
 5-28-93



WATER & SEWER PLAN						
GRAND ADDISON II						
Town Of Addison, Texas						
TIPTON ENGINEERING, INC.						
6330 Belt Line Rd. ~ Suite C ~ Garland, Texas 75043						
DESIGN	DRAWN	DATE	SCALE	NOTES	FILE	NO.
T.E. Inc.	T.E. Inc.	10/92	1"=40'		3726	8