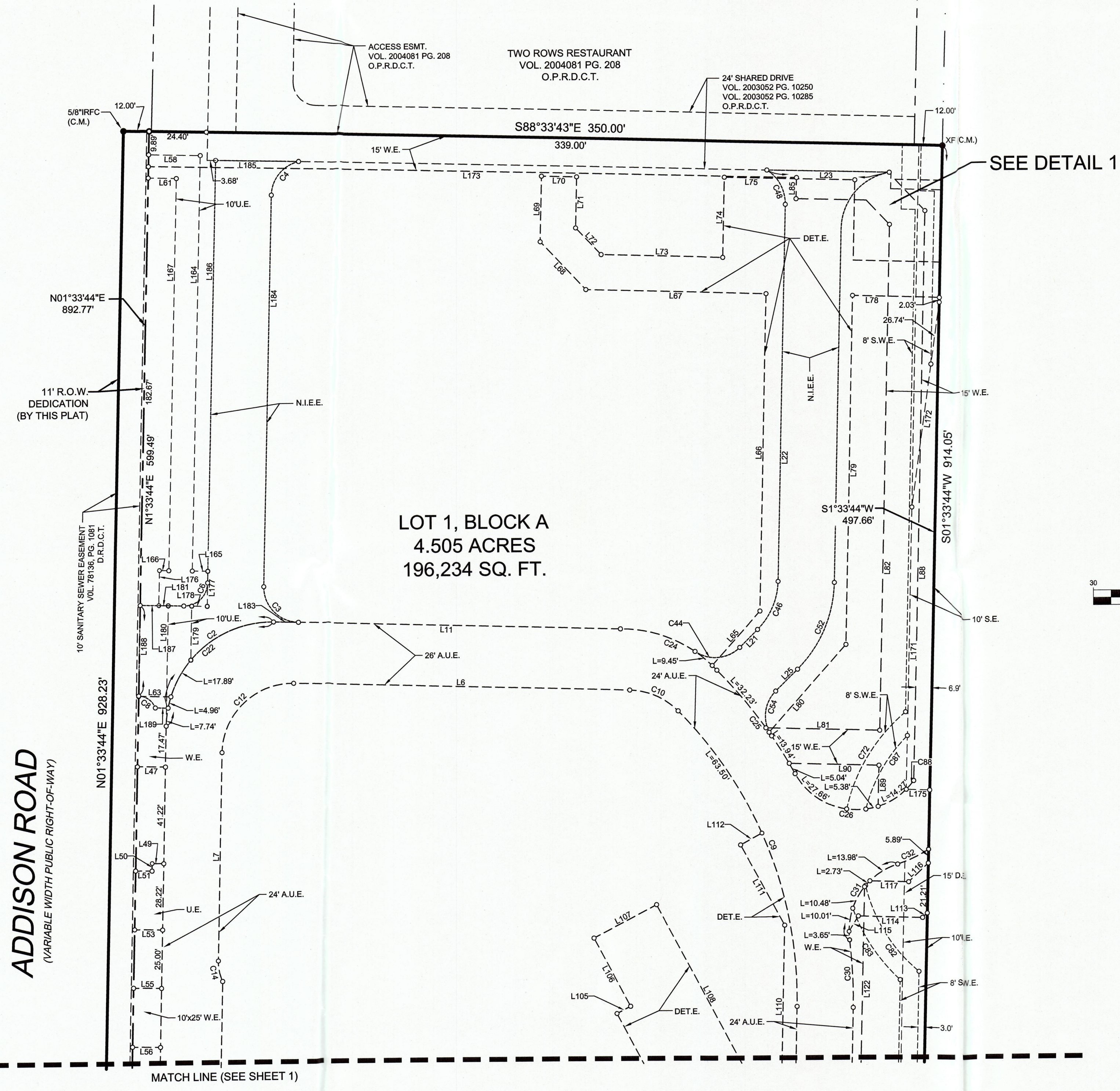


LINE TABLE			LINE TABLE			LINE TABLE		
NO.	BEARING	LENGTH	NO.	BEARING	LENGTH	NO.	BEARING	LENGTH
L1	N88°26'16"W	51.68'	L70	S88°26'16"E	15.00'	L122	N01°33'44"E	128.83'
L2	N01°33'44"E	162.20'	L71	S01°33'44"W	21.90'	L123	N88°26'16"W	4.99'
L3	N01°33'44"E	7.61'	L72	S43°26'16"E	15.67'	L124	N01°33'44"E	15.00'
L4	N23°59'11"E	19.84'	L73	S88°26'16"E	51.68'	L125	S88°26'16"E	5.00'
L5	N01°34'30"E	177.58'	L74	N01°33'44"E	34.20'	L126	N88°26'16"W	31.77'
L6	N88°26'16"W	144.19'	L75	S88°26'16"E	55.68'	L128	N01°33'44"E	15.00'
L7	S01°33'44"W	88.87'	L76	S01°33'44"W	34.20'	L130	S88°26'16"E	31.77'
L8	S01°33'44"W	258.07'	L77	S88°26'16"E	37.07'	L131	N01°33'44"E	133.47'
L9	S88°26'16"E	32.24'	L78	N88°26'16"W	37.07'	L132	N46°33'44"E	54.44'
L10	N01°33'44"E	353.19'	L79	S01°33'44"W	149.10'	L133	S88°26'16"E	75.27'
L11	S88°26'16"E	148.69'	L80	S41°33'44"W	49.76'	L134	N01°33'44"E	96.69'
L12	N01°33'44"E	62.53'	L81	S88°26'16"E	48.55'	L135	N46°33'44"E	42.01'
L13	N01°33'44"E	123.81'	L82	N01°33'44"E	215.94'	L136	S88°26'16"E	69.06'
L14	S88°26'16"E	28.77'	L83	N43°26'16"W	14.36'	L137	S88°26'16"E	21.00'
L15	N24°24'00"E	17.16'	L84	N88°26'24"W	29.96'	L138	N01°33'44"E	10.00'
L17	N01°33'44"E	47.84'	L85	N01°33'36"E	9.04'	L139	N88°26'16"W	21.00'
L18	S88°26'16"E	12.02'	L86	S88°33'43"E	19.96'	L140	N01°33'44"E	19.93'
L19	S52°19'23"E	3.64'	L87	S43°26'16"E	18.48'	L141	N88°26'16"W	10.00'
L20	N88°26'16"W	0.61'	L88	S01°33'44"W	243.27'	L142	N01°33'44"E	10.00'
L21	N45°16'00"E	10.81'	L89	N01°33'44"E	17.36'	L143	N88°26'16"W	8.40'
L22	N01°33'44"E	161.01'	L90	N88°26'16"W	38.31'	L144	N01°33'44"E	182.40'
L23	S88°33'43"E	52.20'	L91	N01°33'36"E	214.43'	L151	S88°26'16"E	7.00'
L24	S01°33'44"W	151.13'	L92	N88°26'24"W	6.03'	L152	N01°33'44"E	15.00'
L25	S45°16'00"W	13.21'	L93	N01°33'36"E	27.35'	L153	N88°26'16"W	7.00'
L35	N88°26'16"W	5.00'	L94	N01°33'36"E	73.76'	L158	S01°33'44"W	127.06'
L36	S01°33'44"W	15.00'	L95	N88°26'24"W	6.03'	L164	N01°33'44"E	177.67'
L37	N88°26'16"W	5.00'	L96	N01°33'36"E	19.67'	L165	S88°26'16"E	6.63'
L39	S88°26'16"E	12.89'	L97	N85°37'38"W	4.48'	L166	S88°26'16"E	4.01'
L40	S01°33'44"W	7.01'	L98	N01°33'44"E	75.67'	L167	N01°33'44"E	167.67'
L41	S88°26'16"E	15.00'	L99	N88°26'16"W	5.92'	L171	N01°33'44"E	120.65'
L42	N01°33'44"E	7.01'	L100	N01°33'44"E	10.00'	L172	N08°04'16"E	88.22'
L43	S88°26'16"E	11.00'	L101	S88°26'16"E	5.92'	L173	S88°33'43"E	276.99'
L44	N01°33'44"E	15.00'	L102	N01°33'44"E	26.03'	L175	S88°26'16"E	10.00'
L45	N88°26'16"W	38.89'	L103	N88°26'16"W	32.80'	L176	N01°33'44"E	15.00'
L47	N88°26'16"W	12.02'	L104	N27°50'37"W	77.23'	L177	S01°33'44"W	15.00'
L49	S88°26'16"E	5.00'	L105	N62°09'23"E	6.58'	L178	N88°26'16"W	6.63'
L50	N01°33'44"E	3.22'	L106	N27°50'37"W	33.08'	L179	S01°33'44"W	22.98'
L51	N88°26'17"W	7.02'	L107	N62°09'23"E	30.33'	L180	N01°33'44"E	51.27'
L53	S88°26'16"E	12.02'	L108	S27°50'37"E	88.73'	L181	N88°26'16"W	4.01'
L55	N88°26'16"W	12.02'	L109	S88°26'16"E	11.23'	L182	N24°24'00"E	14.81'
L56	N88°26'17"W	12.02'	L110	N01°33'44"E	69.87'	L183	N88°26'16"W	10.62'
L58	N88°26'16"W	22.03'	L111	N28°26'16"W	38.96'	L184	S01°33'44"W	167.43'
L60	S88°26'16"E	12.02'	L112	N61°33'44"E	10.42'	L185	S88°33'43"E	35.33'
L61	N88°26'16"W	12.03'	L113	S46°33'44"W	2.79'	L186	N01°33'44"E	180.63'
L63	N88°26'16"W	13.80'	L114	N88°26'16"W	27.42'	L187	N88°26'16"W	18.65'
L65	N41°33'44"E	30.92'	L115	S31°33'44"W	7.70'	L188	N01°33'44"E	38.54'
L66	N01°33'44"E	135.67'	L116	S46°33'44"W	11.57'	L189	N88°26'16"W	5.49'
L67	N88°26'16"W	76.91'	L117	N88°26'16"W	16.58'			
L68	N43°26'16"W	28.10'	L120	N01°33'36"E	110.57'			
L69	N01°33'44"E	28.11'	L121	N01°33'36"E	103.11'			

CURVE TABLE					
NO.	DELTA	RADIUS	LENGTH	CHORD BEARING	CHORD
C1	25°53'47"	15.00'	6.78'	N75°29'22"W	6.72'
C2	80°08'47"	45.00'	62.95'	S51°29'19"W	57.94'
C3	90°00'04"	15.00'	23.56'	S43°26'14"E	21.21'
C4	75°48'27"	15.00'	19.85'	S39°27'58"W	18.43'
C5	22°50'16"	56.00'	22.32'	N12°58'52"E	22.17'
C6	90°00'00"	10.00'	15.71'	N46°33'44"E	14.14'
C7	25°19'56"	15.00'	6.63'	N14°13'42"E	6.58'
C8	66°36'56"	8.00'	9.30'	N53°29'30"W	8.79'
C9	46°06'04"	173.48'	139.58'	N21°29'18"W	135.65'
C10	43°53'56"	30.00'	22.99'	N66°29'18"W	22.43'
C12	89°59'29"	30.00'	47.12'	S46°34'00"W	42.42'
C14	25°03'11"	20.00'	9.02'	S11°21'31"E	8.94'
C16	60°03'19"	56.03'	58.73'	S32°32'54"W	56.07'
C17	11°38'05"	55.00'	11.17'	S56°45'58"W	11.15'
C18	68°42'38"	8.00'	9.59'	N55°53'56"E	9.03'
C19	17°25'52"	8.00'	25.11'	N12°26'12"E	25.02'
C22	90°00'00"	45.00'	70.69'	N46°33'44"E	63.64'
C24	47°26'43"	55.51'	45.97'	S66°30'08"E	44.67'
C25	16°05'03"	197.48'	55.44'	S36°41'29"E	55.25'
C26	106°05'52"	30.00'	55.55'	S81°41'54"E	47.95'
C27	12°51'23"	56.00'	12.57'	N61°42'56"W	12.54'
C28	89°42'22"	30.00'	36.50'	N33°17'27"W	34.29'
C30	8°25'56"	197.48'	29.06'	N02°39'13"W	29.04'
C31	79°19'07"	30.00'	41.53'	N32°47'22"E	38.29'
C32	15°36'34"	54.00'	14.71'	N64°36'38"E	14.67'
C33	22°50'16"	30.00'	11.96'	N12°58'52"E	11.88'
C34	22°50'16"	56.00'	22.32'	N12°58'52"E	22.17'
C35	126°06'53"	10.00'	22.01'	N64°37'11"E	17.83'
C36	90°00'00"	20.00'	31.42'	S43°26'16"E	28.28'
C37	35°33'00"	20.00'	12.41'	S73°47'14"W	12.21'
C44	79°13'13"	15.00'	20.74'	N84°52'36"E	19.13'
C46	43°42'15"	30.00'	22.88'	N23°24'52"E	22.33'
C48	58°38'17"	17.00'	17.40'	N27°45'24"W	16.65'
C50	78°34'55"	25.00'	34.29'	S40°51'12"W	31.66'
C52	43°42'15"	54.00'	41.19'	S23°24'52"W	40.20'
C54	79°25'24"	15.00'	20.79'	S05°33'17"W	19.17'
C72	37°08'58"	76.36'	49.51'	N31°31'48"E	46.65'
C82	36°46'21"	68.36'	43.87'	N31°33'21"W	43.12'
C83	27°43'17"	76.36'	36.95'	N33°07'26"W	36.59'
C87	30°42'32"	68.36'	36.64'	N29°46'35"E	36.20'
C88	9°25'22"	30.00'	4.93'	N40°32'29"E	4.93'



- NOTES**
- The bearing system for this plat is based on grid north of the Texas Coordinate System of 1983 resulting in a bearing of North 01°33'44" East, for the east right-of-way line of Addison Road.
  - All easements are by this plat unless otherwise noted.
  - This plat is subject to restrictions contained in deeds recorded in Volume 79119, Page 2604, Volume 78243, Page 191, and Volume 81101, Page 2295, all of the Deed Records of Dallas County, Texas.

OWNER  
MHSS-ADDISON, LP  
8343 DOUGLAS AVENUE, SUITE 350  
DALLAS, TX, 75225  
TEL: (972) 499-6302

Conformed Copy  
Official Public Records  
John P. Barron, County Clerk  
Dallas County, TEXAS  
06/11/2010 01:34:05 PM  
\$50.00

20100204888

**FINAL PLAT  
MHS ADDITION  
LOT 1 & LOT 2, BLOCK A  
ELI SHEPARD SURVEY, ABSTRACT NO. 1361  
TOWN OF ADDISON  
DALLAS COUNTY, TEXAS**

**Kimley-Horn  
and Associates, Inc.**  
12700 Park Central Drive, Suite 1800  
Dallas, Texas 75251  
Tel. No. (972) 770-1300  
Fax No. (972) 239-3820

Scale 1" = 30'	Drawn by SRD	Checked by DAB	Date APRIL 2009	Project No. 069302500	Sheet No. 2 OF 2
-------------------	-----------------	-------------------	--------------------	--------------------------	---------------------