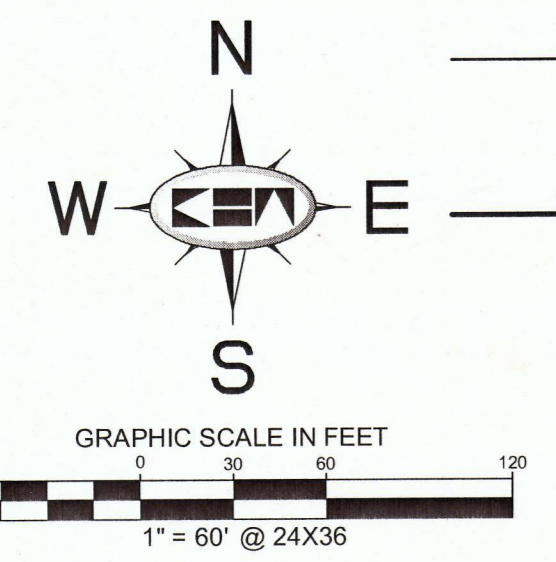
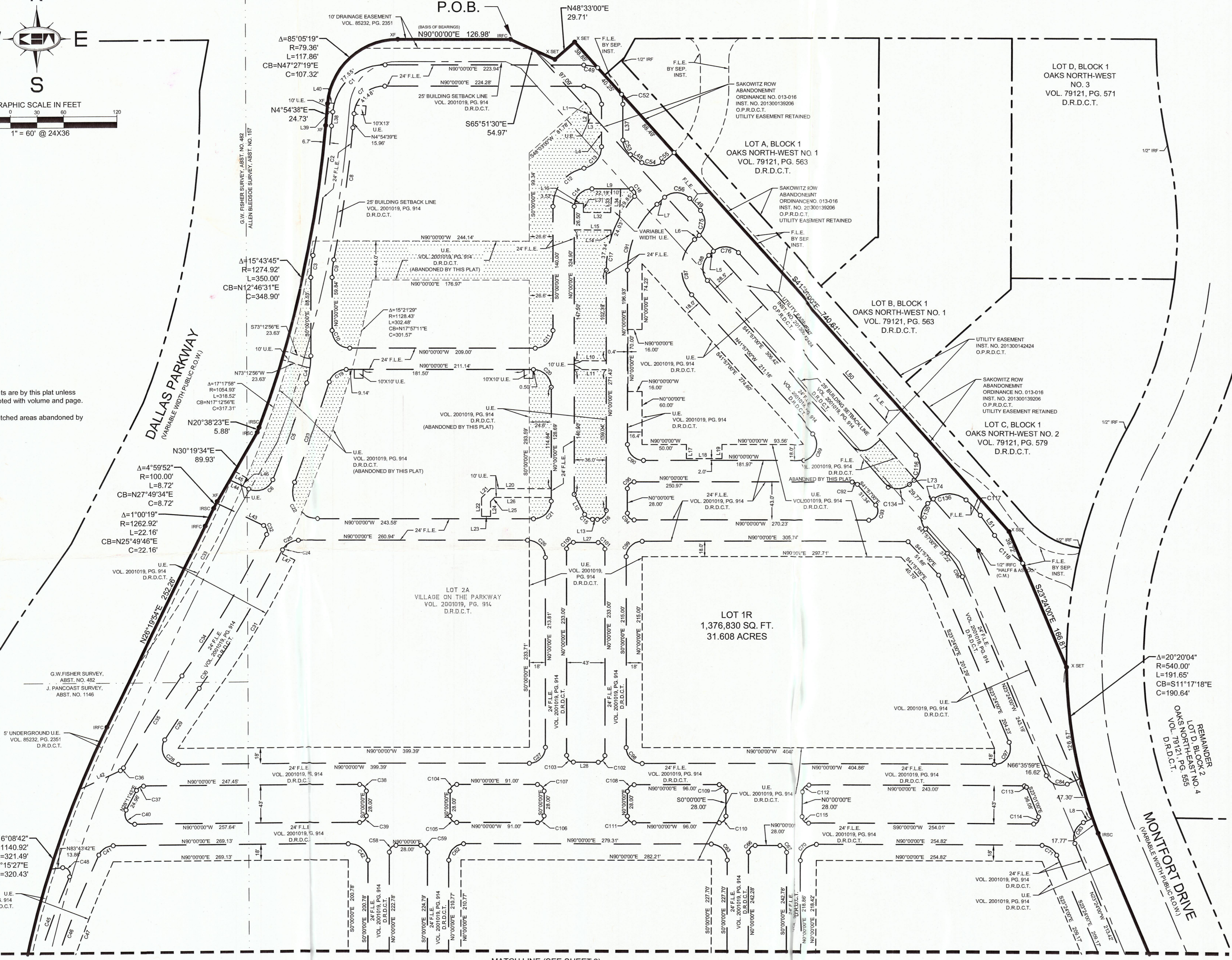


201303295
PLAT 115



BELT LINE ROAD
(100' PUBLIC R.O.W.)

P.O.B.



- NOTES**
- All easements are by this plat unless otherwise noted with volume and page.
 - Hatched areas abandoned by this plat.

CURVE TABLE					
NO.	DELTA	RADIUS	LENGTH	CHORD BEARING	CHORD
C1	86°07'41"	58.02	87.22	S47°59'05"W	79.24
C2	6°35'51"	1281.37	147.55	N08°12'32"E	147.47
C3	11°30'28"	124.00	24.90	S05°45'13"W	24.88
C4	17°44'19"	100.00	30.96	N08°52'09"E	30.84
C5	5°04'49"	1310.92	116.24	N20°16'43"E	116.20
C6	93°06'27"	20.00	32.50	N69°22'21"E	29.04
C7	86°26'59"	34.02	51.33	S48°08'53"W	46.60
C8	8°35'51"	1306.37	150.31	N08°12'32"E	150.23
C9	11°30'28"	100.00	20.08	S05°45'13"W	20.05
C10	90°00'00"	20.00	31.42	S45°00'00"E	28.28
C11	90°00'00"	20.00	31.42	N45°00'00"E	28.28
C12	78°07'58"	44.00	60.00	S39°03'59"W	55.46
C13	78°07'58"	25.00	34.09	S39°03'59"W	31.51
C14	90°00'00"	20.00	31.42	S45°00'00"E	28.28
C15	62°49'23"	10.00	10.96	S68°35'19"E	10.42
C16	90°00'00"	10.00	15.71	N45°00'00"E	14.14
C17	42°09'01"	12.00	91.22	S21°04'45"W	89.18
C18	132°09'18"	5.00	11.53	N23°55'22"W	9.14
C19	72°38'29"	20.00	25.36	S53°40'45"W	23.69
C20	90°00'00"	20.00	31.42	N45°00'00"E	28.28
C21	90°00'00"	20.00	31.42	N45°00'00"E	28.28
C22	112°31'38"	30.00	58.92	S33°44'11"E	49.90
C23	5°10'07"	1334.92	120.42	N19°56'35"E	120.38
C24	0°40'32"	1284.43	13.31	N28°34'43"E	13.31
C25	63°19'12"	20.00	22.10	S58°20'24"W	21.00
C26	90°00'00"	20.00	31.42	N45°00'00"E	28.28
C27	90°00'00"	18.00	28.27	N45°00'00"E	25.46
C28	122°27'55"	18.00	38.47	S28°46'03"E	31.56
C29	3°29'04"	1146.43	69.66	S34°12'27"W	69.65
C30	9°16'11"	1128.43	182.24	N31°18'53"E	182.05
C31	9°02'00"	1144.43	180.43	N31°25'59"E	180.25
C32	90°20'24"	7.50	11.83	N18°54'13"W	10.64
C33	11°20'16"	1054.93	208.75	N31°23'03"E	208.41
C34	9°41'00"	1102.43	186.32	N31°06'29"E	186.10
C35	5°59'24"	1169.43	122.26	S32°57'17"W	122.20
C36	35°34'12"	7.50	4.66	N47°44'41"E	4.58
C37	61°49'07"	9.16	9.88	S59°05'57"W	9.41
C38	90°00'00"	7.50	11.78	N45°00'00"E	10.61
C39	90°00'00"	7.50	11.78	N45°00'00"E	10.61
C40	118°11'53"	10.98	22.65	S30°54'03"E	18.84
C41	64°51'13"	19.00	20.39	S57°32'53"W	19.32
C42	89°02'09"	20.38	31.98	N50°32'55"W	28.86
C43	92°56'38"	20.36	33.02	N53°23'02"E	29.52
C44	101°06'38"	18.00	31.76	S34°56'47"E	27.80
C45	8°15'00"	1169.43	168.50	S19°07'03"W	168.35
C46	9°22'00"	1145.43	189.36	S20°23'16"W	189.15
C47	9°28'19"	1127.43	186.38	S20°23'18"W	186.17
C48	119°3'02"	7.50	15.64	N36°30'48"W	12.96
C49	20°50'11"	44.00	16.00	N79°34'59"W	15.91
C50	90°00'00"	7.50	11.78	N45°00'00"E	10.61
C51	89°03'00"	6.84	10.64	N46°30'55"E	9.60
C52	14°40'11"	44.00	11.31	N07°22'01"W	11.28
C53	54°7'15"	20.00	19.18	S27°28'38"E	18.48
C54	71°9'19"	20.00	24.95	N89°18'35"E	23.36
C55	8°34'46"	100.00	14.57	N49°24'03"E	14.55
C56	90°00'00"	20.00	31.42	N45°00'00"E	28.28
C57	83°7'00"	8.44	12.36	S37°54'36"E	11.28
C58	90°00'00"	7.50	11.78	S45°00'00"E	10.61
C59	90°00'00"	7.50	11.78	N45°00'00"E	10.61
C60	85°04'41"	10.21	15.29	N50°13'11"E	13.90
C61	73°31'04"	17.88	23.04	S34°56'51"E	21.48
C62	88°54'48"	17.89	27.41	S42°10'55"W	24.75
C63	90°00'00"	18.00	28.27	N45°00'00"E	25.46
C64	85°12'51"	18.00	26.87	N42°45'43"E	24.44
C65	94°8'34"	7.05	11.62	S47°14'17"E	10.35
C66	90°00'00"	7.50	11.78	S45°00'00"E	10.61
C67	90°00'00"	7.50	11.78	N45°00'00"E	10.61
C68	65°12'26"	4.07	6.08	N42°45'43"E	5.53
C69	89°34'49"	18.55	26.88	S47°47'27"E	26.06
C70	90°00'00"	18.00	28.27	S45°00'00"E	25.46

CURVE TABLE					
NO.	DELTA	RADIUS	LENGTH	CHORD BEARING	CHORD
C71	66°36'00"	18.00	20.92	N58°42'00"W	19.76
C72	108°55'25"	18.00	34.22	N31°03'43"E	29.29
C73	28°04'36"	7.50	3.68	N80°28'17"W	3.64
C74	151°55'25"	16.50	43.75	N09°33'43"E	32.01
C75	90°00'00"	20.00	31.42	N03°03'00"E	28.28
C76	90°00'00"	20.00	31.42	N88°57'00"W	28.28
C77	108°55'30"	12.46	23.69	N31°03'45"E	20.28
C78	71°04'35"	18.00	22.33	N58°56'17"W	20.92
C79	71°04'35"	16.50	20.47	S58°56'17"E	19.18
C80	108°55'25"	5.50	10.46	S31°03'43"W	8.95
C81	87°59'11"	5.50	8.45	S22°24'25"E	7.64
C82	44°59'11"	42.00	32.98	N00°54'25"W	32.14
C83	90°00'00"	18.00	28.27	S21°36'00"W	25.46
C84	90°00'00"	18.00	28.27	S68°24'00"E	25.46
C85	90°00'00"	44.00	69.12	S03°03'00"W	62.23
C86	90°00'00"	20.00	31.42	S03°03'00"W	28.28
C87	131°57'00"	18.00	41.45	N24°01'30"E	32.88
C88	90°00'00"	18.00	28.27	S45°00'00"E	25.46
C89	48°02'44"	100.00	83.86	S24°01'38"W	81.42
C90	48°03'00"	7.95	6.67	N65°58'30"W	6.47
C91	131°57'00"	10.22	23.54	N24°01'30"E	18.67
C92	90°00'00"	7.50	11.78	S45°00'00"E	10.61
C93	18°33'00"	98.50	31.89	N32°40'30"W	31.75
C94	113°24'00"	18.00	35.63	N33°18'00"E	30.69
C95	90°00'00"	18.00	28.27	S45°00'00"E	25.46
C96	90°00'00"	18.00	28.27	S45°00'00"E	25.46
C97	90°00'00"	7.50	11.78	S45°00'00"E	10.61
C98	90°00'00"	7.50	11.78	N45°00'00"E	10.61
C99	90°00'00"	7.50	11.78	N45°00'00"E	10.61
C100	90°00'00"	7.50	11.78	S45°00'00"E	10.61
C101	90°00'00"	7.50	11.78	N45°00'00"E	10.61
C102	90°00'00"	7.50	11.78	N45°00'00"E	10.61
C103	90°00'00"	7.50	11.78	S45°00'00"E	10.61
C104	90°00'00"	7.50	11.78	S45°00'00"E	10.61
C105	90°00'00"	7.50	11.78	S45°00'00"E	10.61
C106	90°00'00"	7.50	11.78	N45°00'00"E	10.61
C107	90°00'00"	7.50	11.78	N45°00'00"E	10.61
C108	90°00'00"	7.50	11.78	S45°00'00"E	10.61
C109	90°00'00"	7.50	11.78	N45°00'00"E	10.61
C110	90°00'00"	7.50	11.78	N45°00'00"E	10.61
C111	90°00'00"	7.50	11.78	S45°00'00"E	10.61
C112	90°00'00"	7.50	11.78	S45°00'00"E	10.61
C113	66°59'00"	2.55	2.98	N56°30'30"W	2.81
C114	113°01'00"	5.92	11.68	N33°29'30"E	9.87
C115	90°00'00"	7.50	11.78	S45°00'00"E	10.61
C116	88°18'24"	20.40	31.45	N03°20'04"E	28.42
C117	14°47'36"	92.00	23.75	N43°17'53"W	23.69
C118	17°55'51"	145.00	45.38	S44°52'01"E	45.19
C119	90°00'00"	30.00	47.12	S40°30'00"E	42.43
C120	90°00'00"	20.00	31.42	S49°29'54"W	28.28
C121	24°24'35"	20.00	8.52	S68°28'15"E	8.46
C122	92°50'31"	20.00	32.41	N50°55'10"E	28.98
C123	7°48'16"	375.00	51.08	S08°24'02"W	51.04
C124	37°50'11"	20.00	13.21	N06°36'55"W	12.97
C125	28°50'15"	44.00	22.15	S11°06'53"E	21.91
C126	82°11'44"	2.50	3.59	S53°24'02"W	3.29
C127	97°48'16"	6.50	11.10	S36°35'58"E	9.80
C128	90°00'00"	20.00	31.42	S49°29'54"W	28.28
C129	90°00'00"	20.00	31.42	S49°29'54"W	28.28
C130	90°00'00"	20.00	31.42	S40°31'25"W	28.28
C131	90°00'00"	20.00	31.42	N49°28'35"W	28.28
C132	90°00'00"	20.00	31.42	N40°31'25"E	28.28
C133	8°58'29"	100.00	15.66	S89°59'21"E	15.65
C134	89°25'53"	20.00	31.22	S86°39'56"E	28.14
C135	92°58'17"	20.00	32.45	S04°32'08"W	29.01
C136	75°52'53"	30.00	39.73	N88°38'07"W	36.89

MATCH LINE (SEE SHEET 2)

- LEGEND**
- IRF = IRON ROD FOUND
 - IRFC = IRON ROD WITH CAP FOUND
 - IRSC = IRON ROD WITH "KHA" CAP SET
 - XF = "X" CUT IN CONCRETE FOUND
 - C.M. = CONTROL MONUMENT
 - ESMT. = EASEMENT
 - F.L.E. = FIRE LANE EASEMENT
 - U.E. = UTILITY EASEMENT
 - D.E. = DRAINAGE EASEMENT
 - S.E. = STREET EASEMENT
 - W.E. = WATER EASEMENT
 - S.W.E. = SIDEWALK EASEMENT
 - E.E. = ELECTRIC EASEMENT
 - S.S.E. = SANITARY SEWER EASEMENT
 - M.R.D.C.T. = MAP RECORDS, DALLAS COUNTY, TEXAS
 - O.P.R.D.C.T. = OFFICIAL PUBLIC RECORDS, DALLAS COUNTY, TEXAS
 - D.R.D.C.T. = DEED RECORDS, DALLAS COUNTY, TEXAS
 - P.O.B. = POINT OF BEGINNING
 - INST. = INSTRUMENT
 - NO. = NUMBER

LINE TABLE			LINE TABLE			LINE TABLE			LINE TABLE			LINE TABLE			LINE TABLE		
NO.	BEARING	LENGTH	NO.	BEARING	LENGTH	NO.	BEARING	LENGTH	NO.	BEARING	LENGTH	NO.	BEARING	LENGTH	NO.	BEARING	LENGTH
L1	N90°00'00"E	4.1	L11	S44°59'53"E	36.00	L21	S44°59'18"W	14.75	L31	N02°18'01"E	26.52	L41	S64°04'25"E	58.92	L51	N85°30'06"W	63.00
L2	N00°00'00"E	10.00	L12	S27°10'37"E	25.48	L22	S00°00'00"E	20.94	L32	N02°18'01"E	32.69	L42	S64°04'25"E	23.72	L52	N04°29'54"E	59.16
L3	N90°00'00"W	13.5	L13	S90°00'00"E	5.47	L23	N90°00'00"E	10.00	L33	S85°31'25"W	18.34	L43	N59°40'28"W	16.07	L53	N12°18'10"E	21.06
L4	S00°00'00"E	47.6	L14	N02°11'26"W	8.29	L24	N00°00'00"E	16.79	L34	N85°31'24"E	22.43	L44	S30°19'34"W	10.00	L54	N03°18'14"E	16.00
L5	N48°03'00"E	7.0	L15	N90°00'00"E	41.23	L25	N44°59'18"E	6.46	L35	S00°00'00"E	40.47	L45	N63°05'00"W	16.00	L55	S12°18'10"W	31.89
L6	S48°03'00"W	7.0	L16	N90°00'00"W	10.00	L26	N90°00'00"E	63.93	L36	N04°54'39"E	15.96	L46	S54°57'15"E	15.65	L56	S04°29'54"W	45.13
L7	N48°03'00"W	11.7	L17	N00°00'00"E	16.00	L27	N90°00'00"E	28.00	L37	N85°05'22"W	6.68	L47	N04°28'35"W	18.00	L57	N04°28'35"W	177.50
L8	S66°35'59"W	11.4	L18	N90°00'00"W	40.00	L28	N90°00'00"W	28.00	L38	N85°05'22"W	7.50	L48	N04°28'35"W	306.49	L58	N85°31'25"E	213.32
L9	N90°00'00"W	44.2	L19	S00°00'00"E	16.00	L29	S00°00'00"E	10.00	L39	N60°24'13"W	60.01	L49</					