

LEGEND

FIR Found Iron Rod
SIR Set 5/8" Iron Rod with a plastic cap stamped "KADLECK NO. 3952"

EASEMENT CURVE TABLE					
CURVE #	DELTA	RADIUS	CHORD BEARING	CHORD LENGTH	ARC LENGTH
C7	010°01'16"	670.51'	N85°11'34"E	117.12'	117.27'
C8	008°41'54"	169.00'	N84°31'53"E	25.63'	25.66'
C9	006°12'28"	281.00'	N85°46'36"E	30.43'	30.45'
C10	033°30'24"	691.00'	N57°57'23"E	398.36'	404.10'
C11	011°15'01"	407.50'	S05°52'16"W	79.89'	80.01'
C12	011°15'01"	392.50'	N05°52'16"E	76.95'	77.07'
C13	001°54'22"	700.00'	S50°08'38"W	23.29'	23.29'
C14	000°48'07"	700.00'	S55°48'57"W	10.00'	10.00'
C15	023°20'18"	261.30'	S31°52'28"E	105.70'	106.43'
C16	021°45'08"	246.30'	N31°42'00"W	92.95'	93.51'

EASEMENT LINE TABLE		
LINE #	LENGTH	BEARING
L16	14.14	S89°45'14"E
L17	12.73	S48°14'46"W
L18	14.14	N89°45'14"W
L19	12.73	N45°14'46"E
L20	28.25	S89°45'14"E
L21	20.00	S00°14'46"W
L22	13.25	N89°45'14"W
L23	5.04	S00°14'46"W
L24	15.00	N89°45'14"W
L25	25.04	N00°14'48"E
L26	9.00	N89°58'39"W
L27	574.00	S00°01'21"W
L28	854.16	N89°45'14"W
L29	6.00	S00°14'46"W
L30	15.26	S89°45'14"E
L31	14.03	S48°14'46"E
L32	10.00	S41°12'11"W
L33	25.55	N48°47'49"W
L34	15.00	N41°12'11"E
L35	51.00	S48°14'49"E
L36	20.00	S41°12'11"W
L37	28.00	N48°47'49"W
L38	5.00	N41°12'11"E
L39	23.00	N48°47'49"W
L40	9.00	S48°14'49"E

EASEMENT LINE TABLE		
LINE #	LENGTH	BEARING
L41	9.00	N00°12'12"E
L42	12.68	S89°47'48"E
L43	596.12	N41°12'11"E
L44	33.10	S59°45'14"E
L45	43.50	S00°14'46"W
L46	46.09	S14°45'14"E
L47	93.10	S39°40'59"W
L48	138.16	S89°45'14"E
L49	60.18	N41°12'11"E
L50	48.50	S48°14'46"E
L51	15.00	S41°12'11"W
L52	33.50	N48°47'48"W
L53	52.02	S41°12'11"W
L54	152.01	N89°45'14"W
L55	103.42	N39°40'59"W
L56	51.38	N14°45'14"W
L57	36.81	N00°14'46"E
L58	15.78	N59°45'14"W
L59	17.32	N00°14'46"E
L60	15.00	S89°45'14"E
L61	172.54	S00°14'46"W
L62	50.06	S11°29'47"W
L63	91.40	S56°29'47"W
L64	84.76	N89°45'14"W
L65	35.56	S00°14'48"E

EASEMENT LINE TABLE		
LINE #	LENGTH	BEARING
L66	388.33	S89°45'14"E
L67	48.25	N00°14'46"E
L68	88.61	S89°45'14"E
L69	25.94	S48°14'46"E
L70	15.00	S41°11'48"W
L71	20.34	N48°47'49"W
L72	66.01	N89°45'14"W
L73	33.25	S00°14'46"W
L74	19.59	S89°45'14"E
L75	7.37	S48°14'49"E
L76	15.00	S41°12'11"W
L77	1.77	N48°47'49"W
L78	432.32	N89°45'14"W
L79	50.56	N00°14'46"E
L80	185.89	N89°45'14"W
L81	9.77	N00°14'46"E
L82	15.88	N89°45'14"W
L83	13.66	N67°44'46"E
L84	284.37	S89°45'14"E
L85	80.64	N56°29'47"E
L86	43.84	N11°29'47"E
L87	172.54	N00°14'46"E
L88	28.50	S89°45'14"E
L89	28.50	S89°45'14"E
L90	51.04	S00°14'46"W
L91	38.00	N89°45'14"W

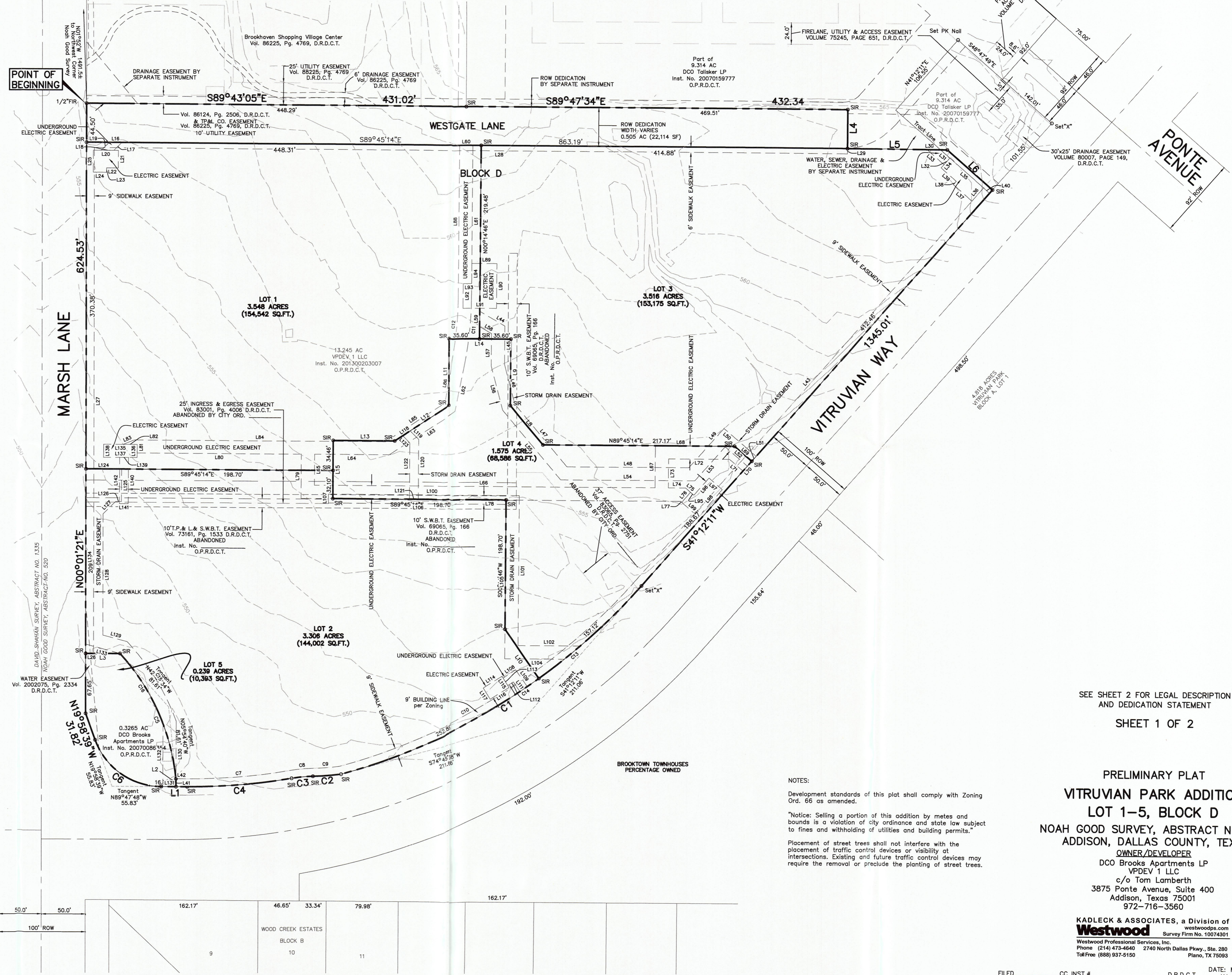
EASEMENT LINE TABLE		
LINE #	LENGTH	BEARING
L92	28.00	N00°14'46"E
L93	9.50	S89°45'14"E
L94	23.04	N00°14'46"E
L95	5.00	S48°14'49"E
L96	26.00	N41°12'11"E
L97	20.00	S48°14'49"E
L98	41.00	N41°12'11"E
L99	25.00	N48°47'49"W
L100	218.70	S89°45'14"E
L101	170.25	S00°14'46"W
L102	70.29	S89°45'14"E
L104	67.48	N89°45'14"W
L105	175.25	N00°14'46"E
L106	203.70	N89°45'14"W
L107	10.00	N00°14'46"E
L108	17.11	S56°05'51"E
L109	23.22	S34°37'37"E
L111	13.22	N34°37'37"W
L112	7.53	S56°31'17"W
L113	10.00	N32°15'28"W
L114	25.00	N57°44'32"E
L115	15.00	S32°15'28"E
L116	25.00	S57°44'32"W
L117	15.00	N32°15'28"W
L118	10.20	S56°29'47"W

EASEMENT LINE TABLE		
LINE #	LENGTH	BEARING
L119	13.79	S44°45'14"E
L120	68.43	S00°14'46"W
L121	10.00	N89°45'14"W
L122	64.28	N00°14'46"E
L123	11.63	N44°45'14"W
L124	40.38	S89°45'14"E
L125	37.00	S00°14'46"W
L126	6.82	N89°45'14"W
L127	19.96	S45°01'21"W
L128	137.66	S00°01'21"W
L129	28.38	S74°55'38"E
L130	73.88	S00°12'12"W
L131	15.00	N89°47'48"W
L132	71.14	N00°12'12"E
L133	40.26	N74°55'38"W
L134	199.20	N00°01'21"E
L135	38.04	S89°45'14"E
L136	15.00	S00°14'46"W
L137	38.04	N89°45'14"W
L138	15.00	N00°14'46"E
L139	10.00	S89°45'14"E
L140	52.65	S00°14'46"W
L141	10.00	N89°45'14"W
L142	52.65	N00°14'46"E

NUM	BEARING	DISTANCE
L1	N89°47'48"W	29.40'
L2	N00°12'12"E	9.00'
L3	N89°58'39"W	38.88'
L4	S00°14'46"W	44.52'
L5	S89°45'14"E	113.41'
L6	S48°14'49"E	68.27'
L7	N48°47'49"W	25.94'

NUM	BEARING	DISTANCE
L8	N39°41'00"W	58.13'
L9	N00°14'46"W	75.17'
L10	S34°37'37"E	67.85'
L11	S00°14'46"W	75.31'
L12	S56°29'47"W	74.03'
L13	N89°45'14"W	69.73'
L14	N89°45'14"W	71.19'
L15	N00°14'46"E	66.56'

NUM	DELTA	ARC	RADIUS	CHORD BEARING	CHORD	TANGENT BEARING	TANGENT
C1	33°33'27"	409.98'	700.00'	S57°58'54"W	404.15'	SEE DRAWING	SEE DRAWING
C2	06°19'56"	32.05'	290.00'	S85°42'52"W	32.03'	S89°32'55"W	S88°52'50"W
C3	08°41'54"	24.29'	160.00'	N84°31'53"W	24.27'	S88°52'50"W	S80°10'56"W
C4	10°01'16"	118.85'	679.51'	S85°11'34"W	118.70'	S80°10'56"W	N89°47'48"W
C5	36°39'54"	157.61'	246.30'	N24°14'37"W	154.94'	SEE DRAWING	SEE DRAWING
C6	69°49'09"	97.49'	80.00'	N54°53'13"W	91.57'	SEE DRAWING	SEE DRAWING



SEE SHEET 2 FOR LEGAL DESCRIPTION AND DEDICATION STATEMENT
SHEET 1 OF 2

PRELIMINARY PLAT
VITRUVIAN PARK ADDITION
LOT 1-5, BLOCK D
NOAH GOOD SURVEY, ABSTRACT No. 520
ADDISON, DALLAS COUNTY, TEXAS
OWNER/DEVELOPER
DCO Brooks Apartments LP
VPDEV 1 LLC
c/o Tom Lamberth
3875 Ponte Avenue, Suite 400
Addison, Texas 75001
972-716-3560

KADLECK & ASSOCIATES, a Division of
Westwood Survey Firm No. 10074301
Westwood Professional Services, Inc.
Phone (214) 473-4640 2740 North Dallas Pkwy., Ste. 280
Toll Free (888) 937-5150 Plano, TX 75093