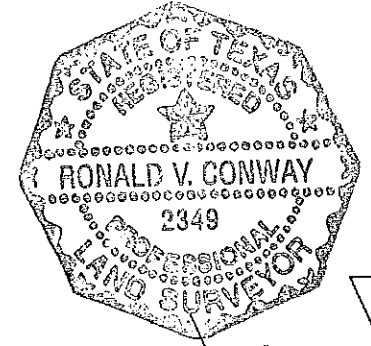


01/16/03 RJL SCALE: 1=60 H:\PROJECTS\ADDISON\98143\PLATS\ADD-PLAT5W.DWG

EXHIBIT B

SCALE: 1"=60'



Ronald V. Conway
1/16/03

ADDISON

EDWARD COOK SURVEY
ABST. NO. 326

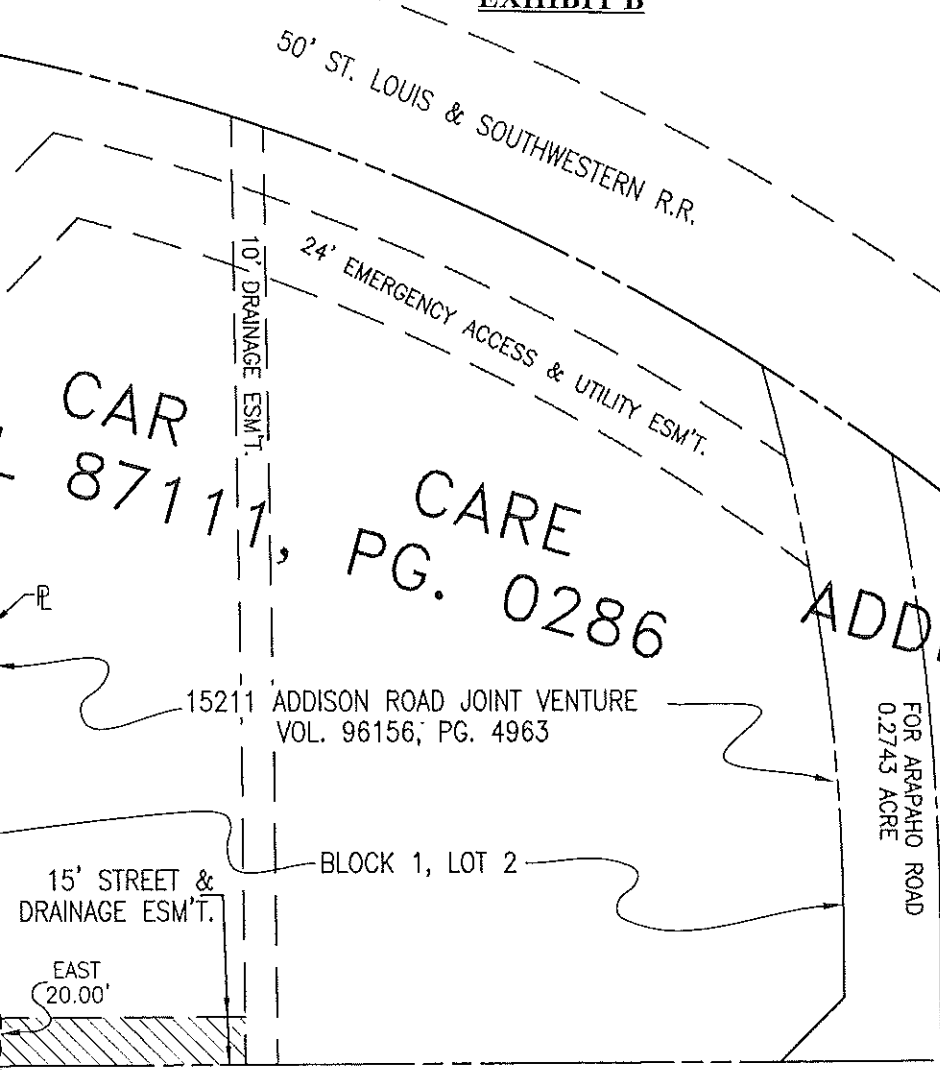
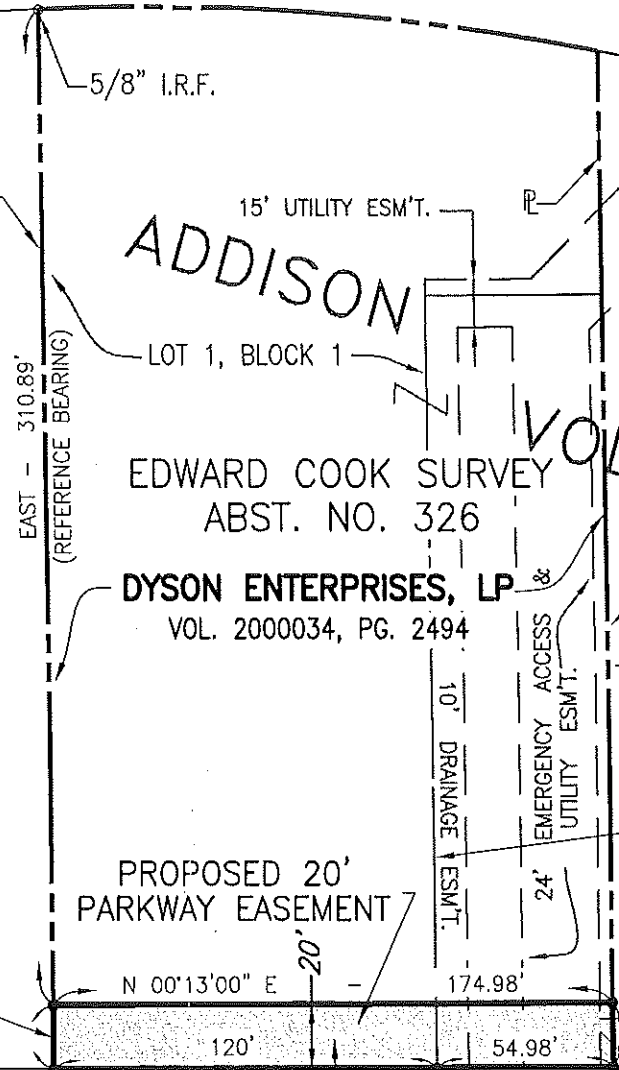
DYSON ENTERPRISES, LP
VOL. 2000034, PG. 2494

VOL CAR
87111, CARE
PG. 0286

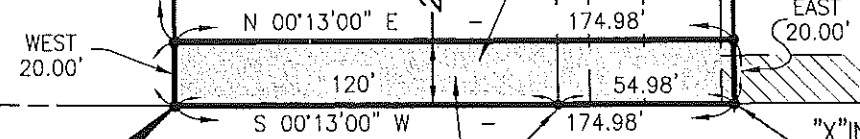
ADDITION

15211 ADDISON ROAD JOINT VENTURE
VOL. 96156, PG. 4963

METRO BRICK
COMPANY, INC.
VOL. 96180, PG. 02908
BLOCK 1, LOT 3
3' STREET ESM'T.



60' R.O.W. DEDICATED
TO TOWN OF ADDISON
0.2743 ACRE



POINT OF
BEGINNING

3499.51 SQ. FT.
0.080 ACRES

ADDISON ROAD

ARAPAHO
ROAD

TOWN OF ADDISON, TEXAS

ADDISON ROAD
DYSON ENTERPRISES, LP
PARKWAY EASEMENT

BIRKHOFF, HENDRICKS & CONWAY, L.L.P.
CONSULTING ENGINEERS
7502 Greenville Ave., Ste. 220
Dallas, Texas
(214) 361-7900

JAN. 2003
PLAT 5W