

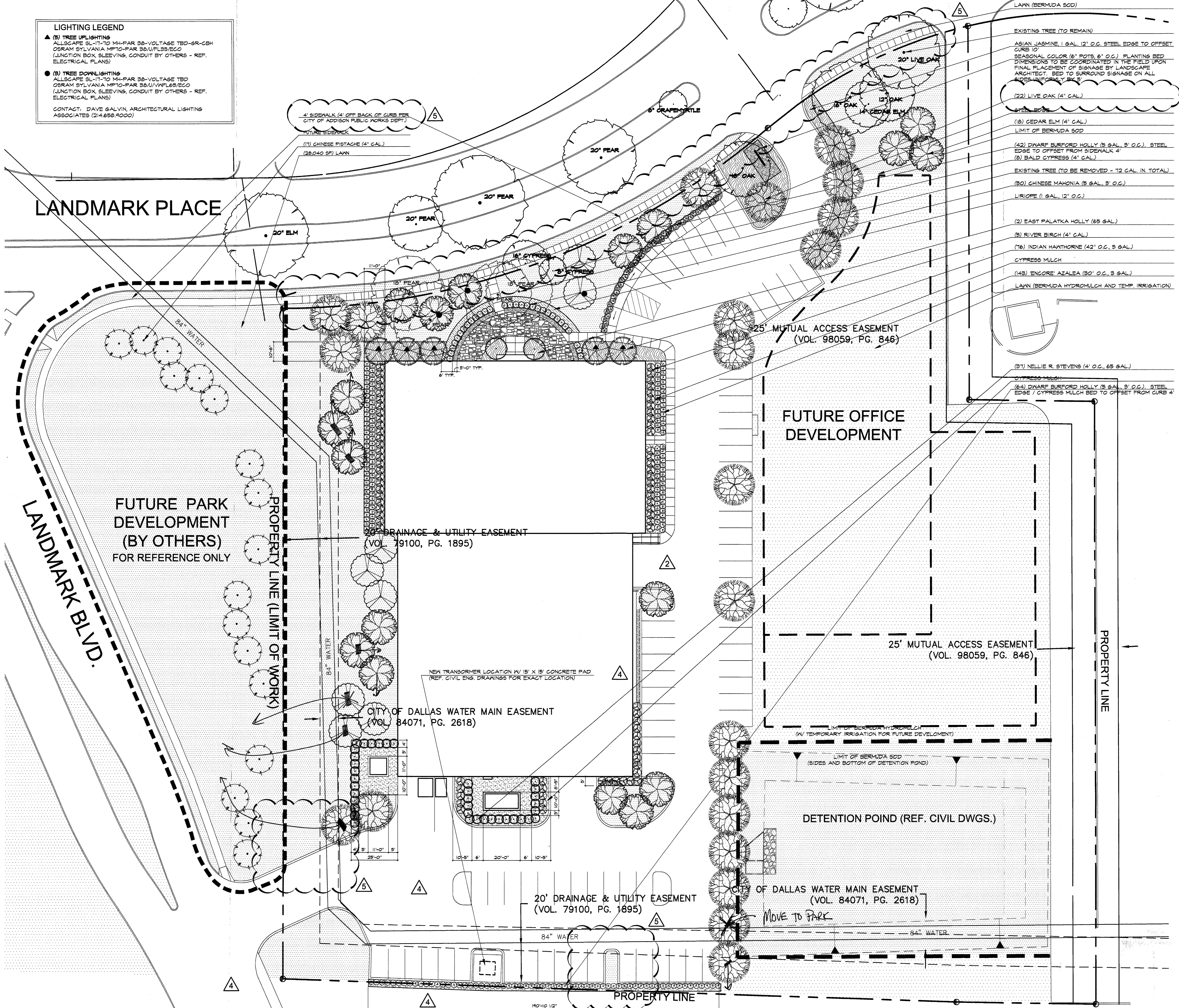
LIGHTING LEGEND

▲ (S) TREE UPLIGHTING
 ALLSCAPE SL-11-TO M4-PAR 38-VOLTAGE TBD-SR-CBH
 OSRAM SYLVANIA MPTO-PAR 38/U/FL55/ECO
 (JUNCTION BOX, SLEEVINGS, CONDUIT BY OTHERS - REF. ELECTRICAL PLANS)

● (S) TREE DOWNLIGHTING
 ALLSCAPE SL-11-TO M4-PAR 38-VOLTAGE TBD
 OSRAM SYLVANIA MPTO-PAR 38/U/FL55/ECO
 (JUNCTION BOX, SLEEVINGS, CONDUIT BY OTHERS - REF. ELECTRICAL PLANS)

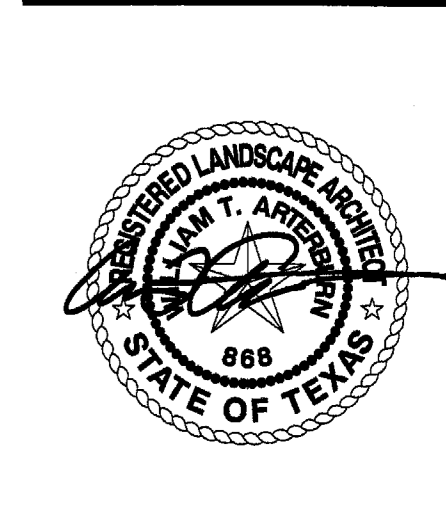
CONTACT: DAVE GALVIN, ARCHITECTURAL LIGHTING ASSOCIATES (214.659.9000)

- EXISTING TREE (TO REMAIN)
- ASIAN JASMINE (1 GAL, 12" O.C. STEEL EDGE TO OFFSET CURB 10')
- SEASONAL COLOR (6" POTS 6" O.C.) PLANTING BED DIMENSIONS TO BE COORDINATED IN THE FIELD UPON FINAL PLACEMENT OF SIGNAGE BY LANDSCAPE ARCHITECT. BED TO SURROUND SIGNAGE ON ALL SIDES UNLESS NOTED OTHERWISE
- (22) LIVE OAK (4' GAL.)
- STEEL EDGE
- (18) CEDAR ELM (4' GAL.)
- LIMIT OF BERMDA SOD
- (42) DYNARE BURFORD HOLLY (5 GAL, 3" O.C.) STEEL EDGE TO OFFSET FROM SIDEWALK 4'
- (8) BALD CYPRESS (4' GAL.)
- EXISTING TREE (TO BE REMOVED - 12 GAL. IN. TOTAL)
- (80) CHINESE MAHONIA (5 GAL, 3" O.C.)
- LIRIOPE (1 GAL, 12" O.C.)
- (2) EAST PALATKA HOLLY (65 GAL.)
- (5) RIVER BIRCH (4' GAL.)
- (76) INDIAN HAWTHORNE (42" O.C. 5 GAL.)
- CYPRESS MULCH
- (149) ENCORE AZALEA (30" O.C. 3 GAL.)
- LAWN (BERMDA HYDROMULCH AND TEMP. IRRIGATION)
- (37) NELLIE R. STEVENS (4" O.C. 65 GAL.)
- CYPRESS MULCH
- (64) DYNARE BURFORD HOLLY (5 GAL, 3" O.C.) STEEL EDGE / CYPRESS MULCH BED TO OFFSET FROM CURB 4'



ARCHITECTURE
 INTERIOR DESIGN
 PLANNING

8350 NORTH CENTRAL EXPRESS
 SUITE 500
 DALLAS, TEXAS 75206
 214-559-4851
 214-526-7237 FAX



**4970
 Landmark
 Place
 Phase 1**

THE DESIGN DOCUMENTS DEPICTED ARE INCOMPLETE AND MAY NOT BE FOR REGULATORY APPROVAL, PER CONSTRUCTION

RONALD J. SHAW, 4310

ARCHITECT COORDINATED DRAW ENGINEERING DRAWINGS WERE ENGINEERED AND DRAWN BY THE DISCIPLINES

- REVISIONS
- 2 ADDENDUM #2 - MARCH 10TH, 2006
 - 3 ASI #7 - MAY 10TH, 2006
 - 4 ASI #10 - AUGUST 14TH, 2006
 - 5 ASI #17 - JANUARY 2ND, 2007

**LANDSCAPE
 SITE PLAN**

L4.01

JOB NO: 25195
 DATE: FEBRUARY 22, 2006
 DRAWN BY: PDF
 FILE:

A SITE LANDSCAPE PLAN
 SCALE: 1" = 20'-0"

