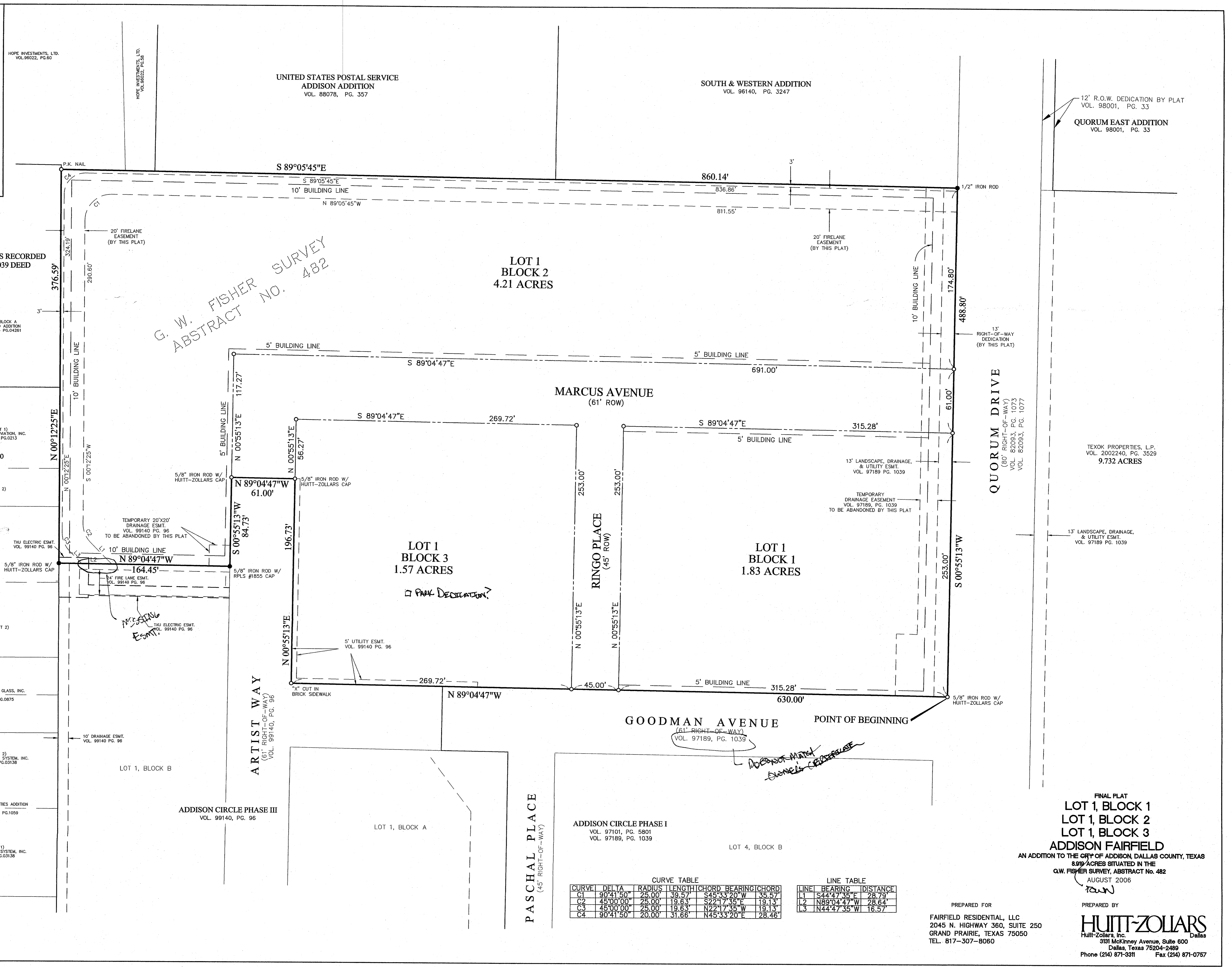
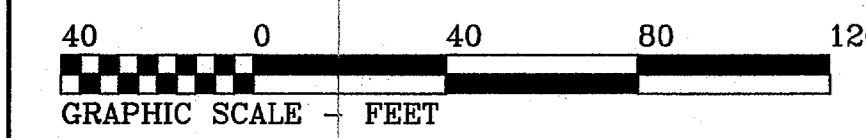
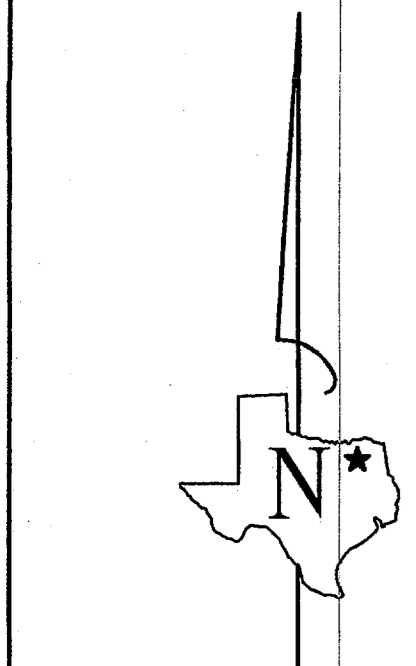


LOCATION MAP
NTS

BASIS OF BEARINGS / DIRECTIONAL CONTROL:

THE FINAL PLAT OF ADDISON CIRCLE PHASE I, AS RECORDED IN VOLUME 97101, PAGE 5801, AND 97189, PAGE 1039 DEED RECORDS OF DALLAS COUNTY, TEXAS.



G. W. FISHER SURVEY
ABSTRACT NO. 482

ADDISON CIRCLE PHASE I
VOL. 97101, PG. 5801
VOL. 97189, PG. 1039

CURVE TABLE

CURVE	DELTA	RADIUS	LENGTH	CHORD	BEARING	CHORD
C1	90°41'50"	25.00'	39.57'	S45°33'20"W	35.57'	
C2	45°00'00"	25.00'	19.63'	S22°17'35"E	19.13'	
C3	45°00'00"	25.00'	19.63'	N22°17'35"W	19.13'	
C4	90°41'50"	20.00'	31.66'	N45°33'20"E	28.46'	

LINE TABLE

LINE	BEARING	DISTANCE
L1	S44°47'35"E	28.79'
L2	N89°04'47"W	28.64'
L3	N44°47'35"W	16.57'

FINAL PLAT
LOT 1, BLOCK 1
LOT 1, BLOCK 2
LOT 1, BLOCK 3
ADDISON FAIRFIELD
AN ADDITION TO THE CITY OF ADDISON, DALLAS COUNTY, TEXAS
8.99 ACRES SITUATED IN THE
G.W. FISHER SURVEY, ABSTRACT No. 482
AUGUST 2006

PREPARED FOR
FAIRFIELD RESIDENTIAL, LLC
2045 N. HIGHWAY 360, SUITE 250
GRAND PRAIRIE, TEXAS 75050
TEL. 817-307-8060

PREPARED BY
HUITT-ZOLIARS
Huitt-Zollars, Inc.
3181 McKinney Avenue, Suite 600
Dallas, Texas 75204-2489
Phone (214) 871-3311 Fax (214) 871-0757