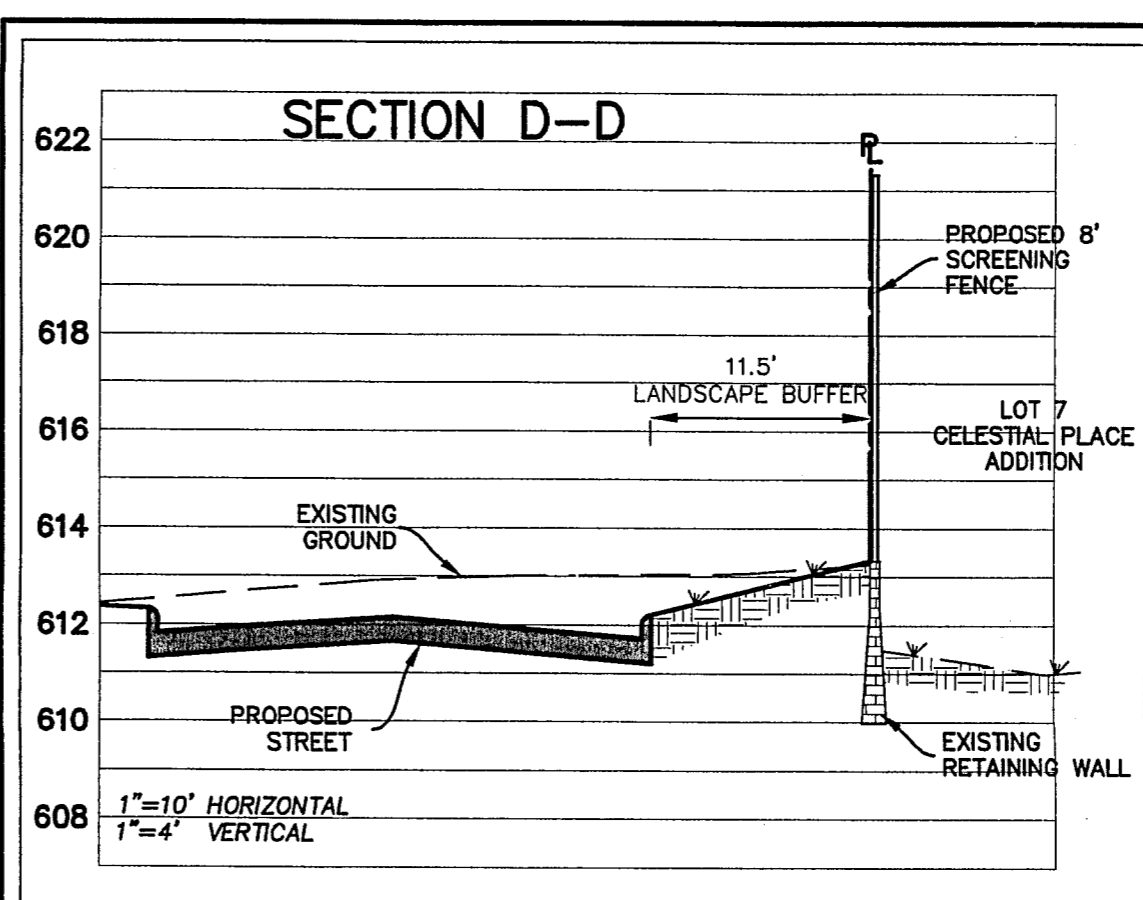
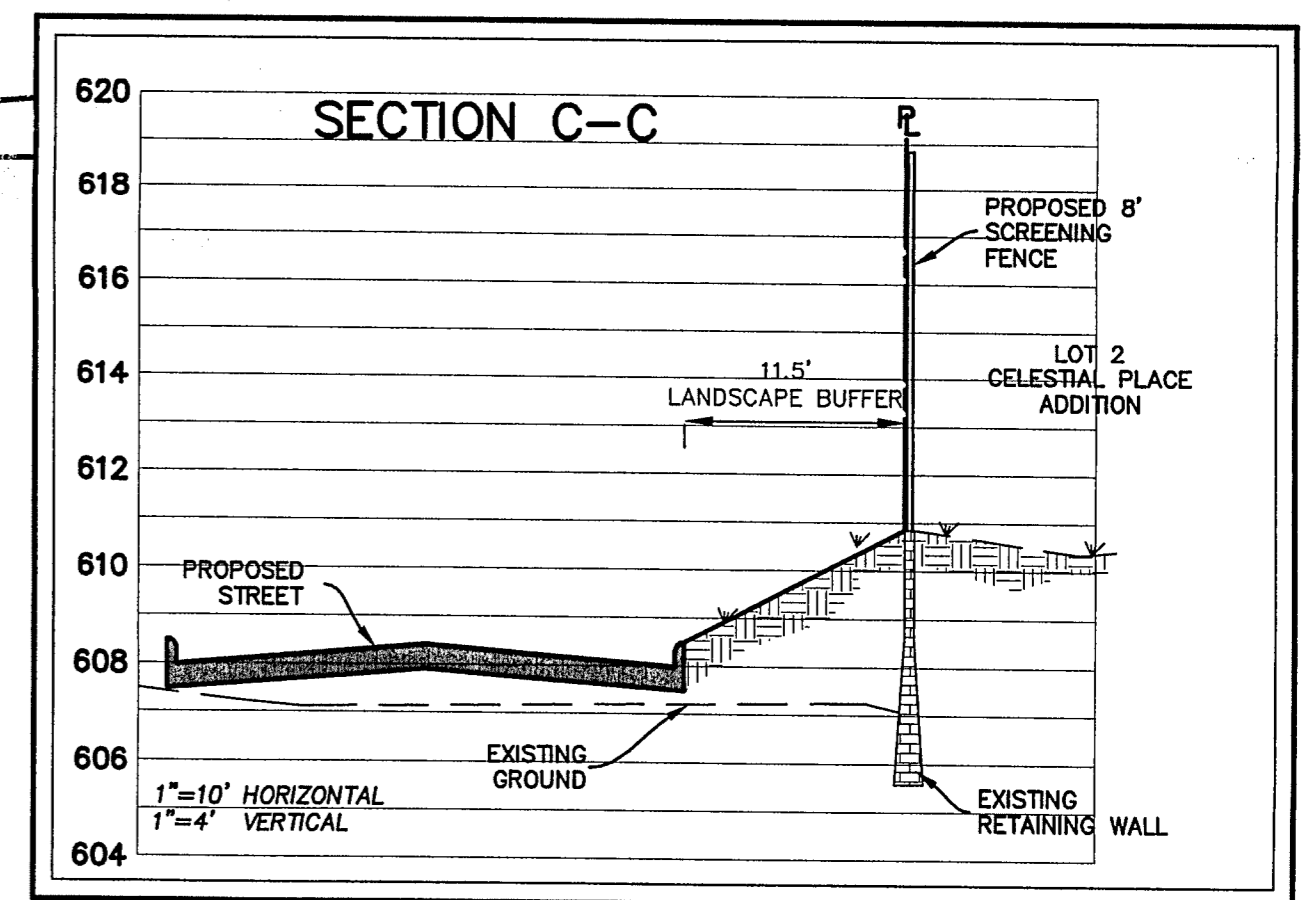
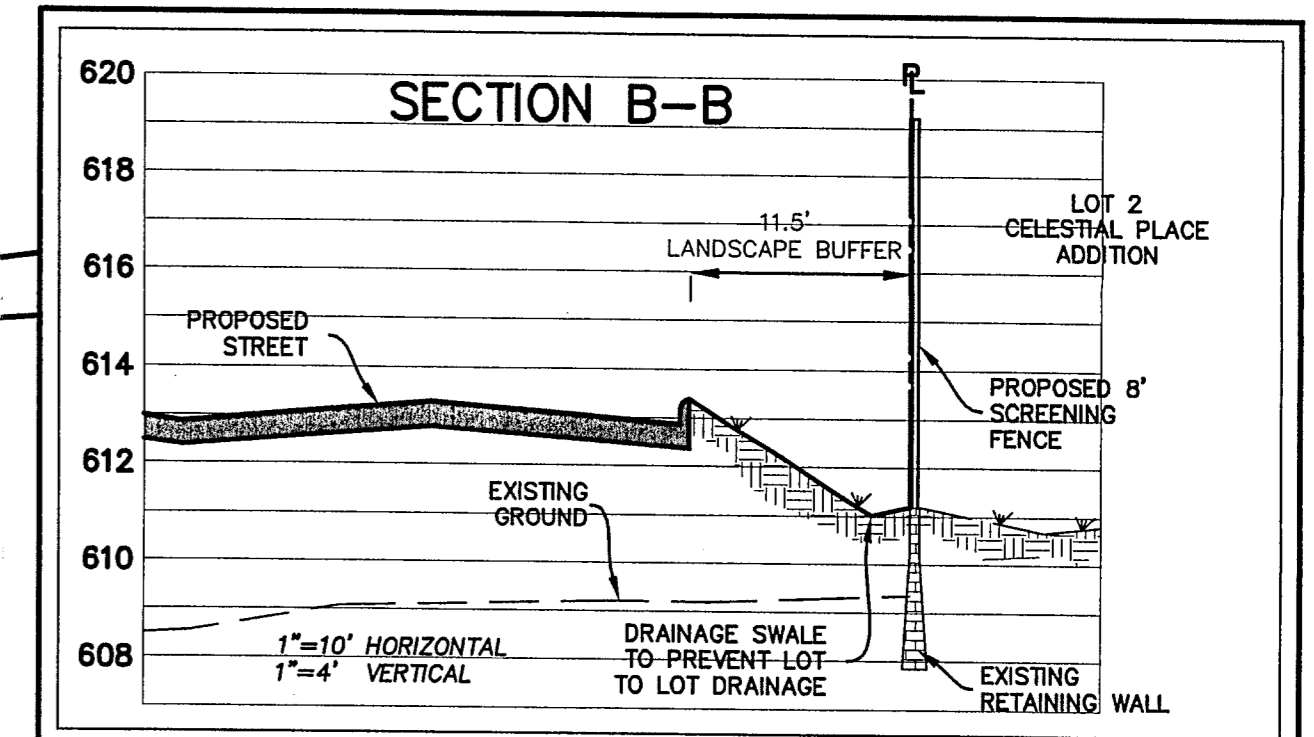
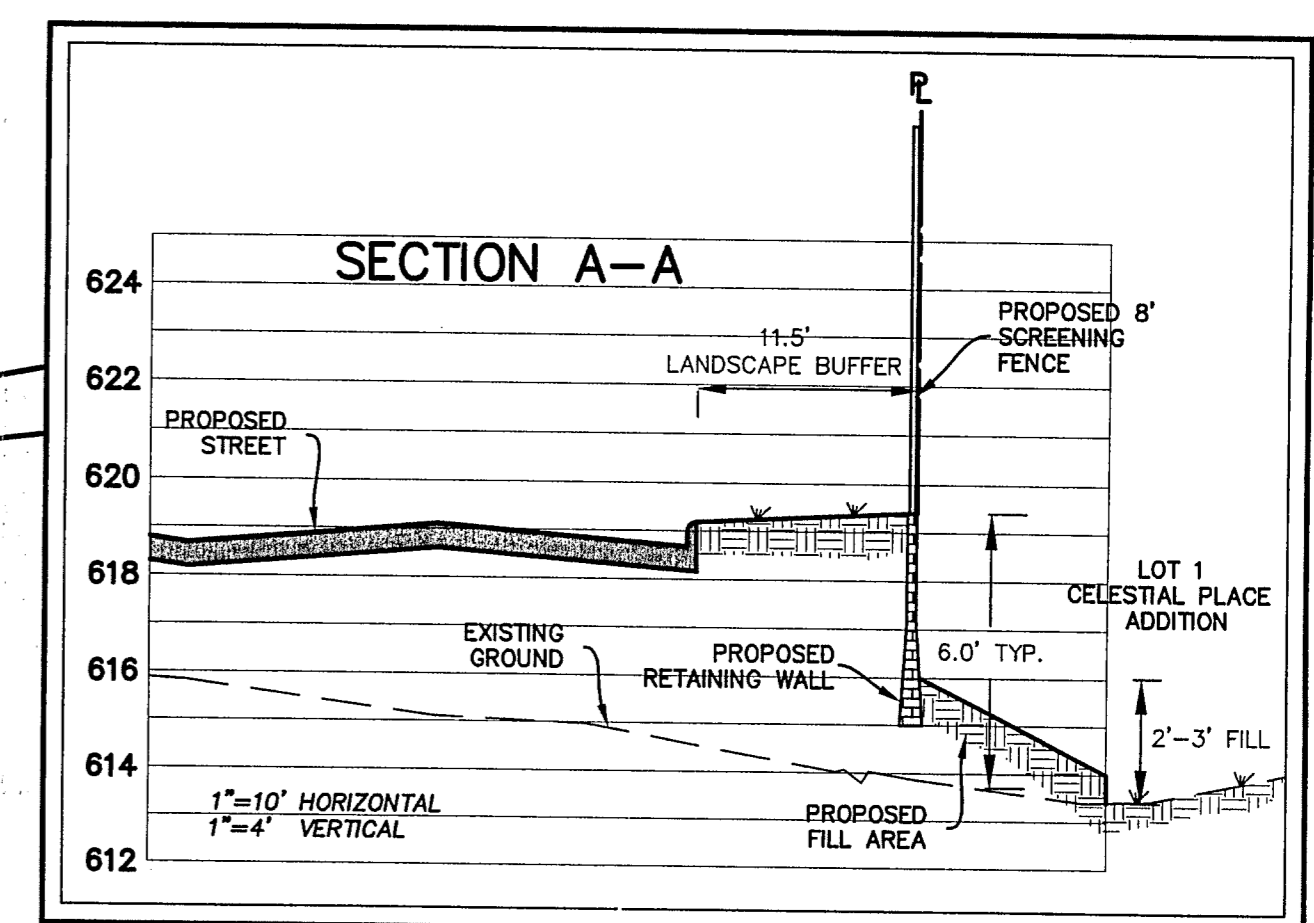
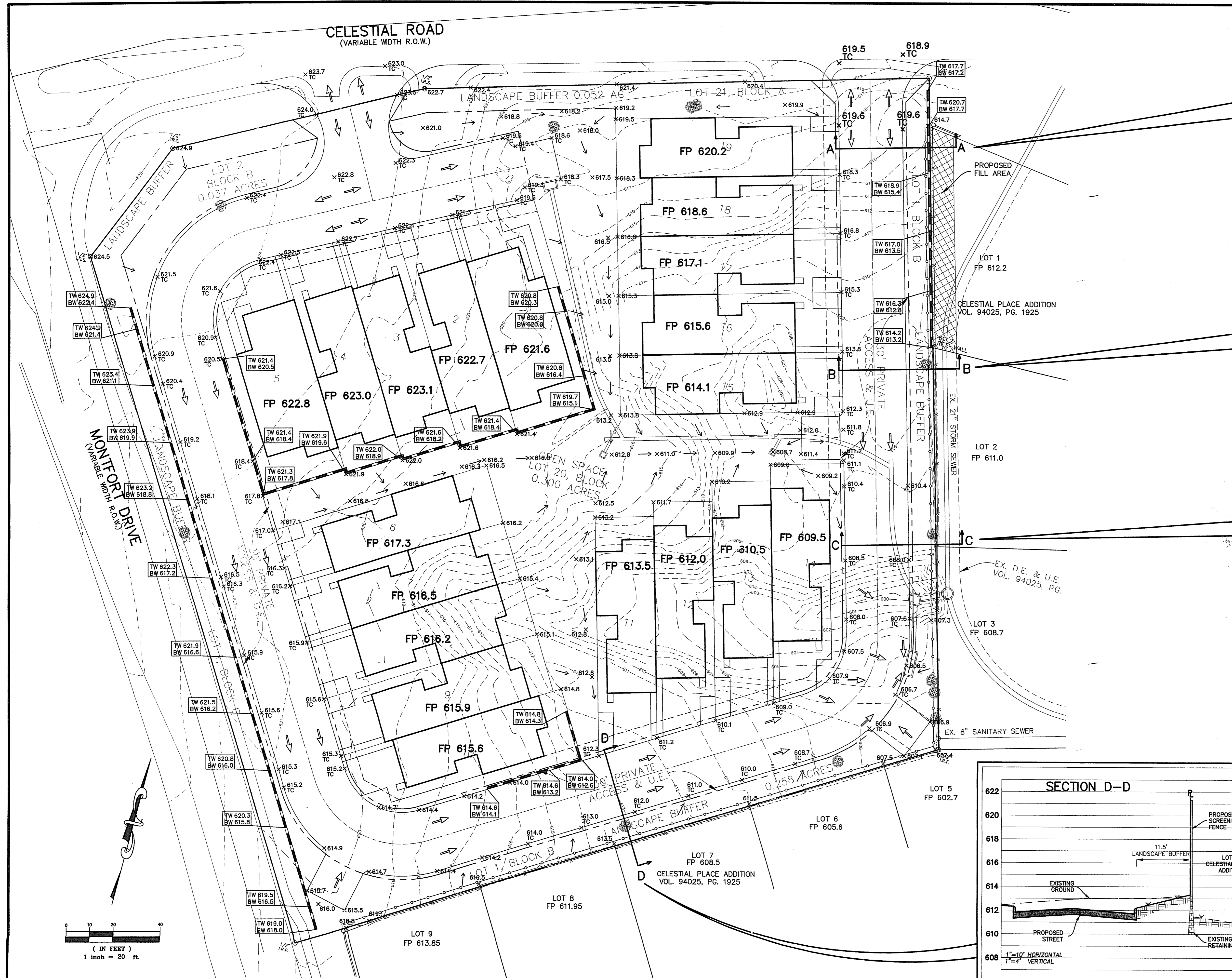
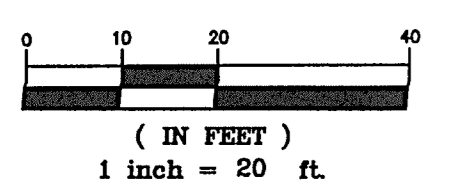


CELESTIAL ROAD
(VARIABLE WIDTH R.O.W.)



LEGEND

- - - - -715- - - EX. CONTOUR INTERVAL
- x 607.30 PROP. FINISH GRADE
- FP 607.7 PROP. FINISH PAD
- PROP. DRAINAGE FLOW DIRECTION
- TW 609.5 ELEVATION OF GROUND AT TOP OF WALL / LOW SIDE OF WALL
- — — — — PROPOSED WALL
- — — — — EXISTING WALL



NO.	REVISIONS DURING CONSTRUCTION	BY	DATE	NO.	REVISIONS DURING PLAN REVIEW	BY	DATE

JB Jones & Boyd, Inc.
17090 Dallas Parkway, Suite 200
Dallas, Texas 75248
972.248.7676 office
972.248.1414 fax
www.jones-boyd.com

- Engineering
- Surveying
- Planning
- Landscape Architecture
- Construction Management

GRADING PLAN
PRELIMINARY
STANFORD COURT VILLAS
Town of Addison, Dallas County, Texas

PROJECT NO. **CDC004**
SHEET NO. **1**

2006-03

Plotted by: Juke Plot Date: 6/26/2006 2:10 PM
Drawing: H:\Projects\CD0004\dwg\Revised Layout\CD0004.dwg Saved By: Juke Save Time: 6/26/2006 2:09 PM