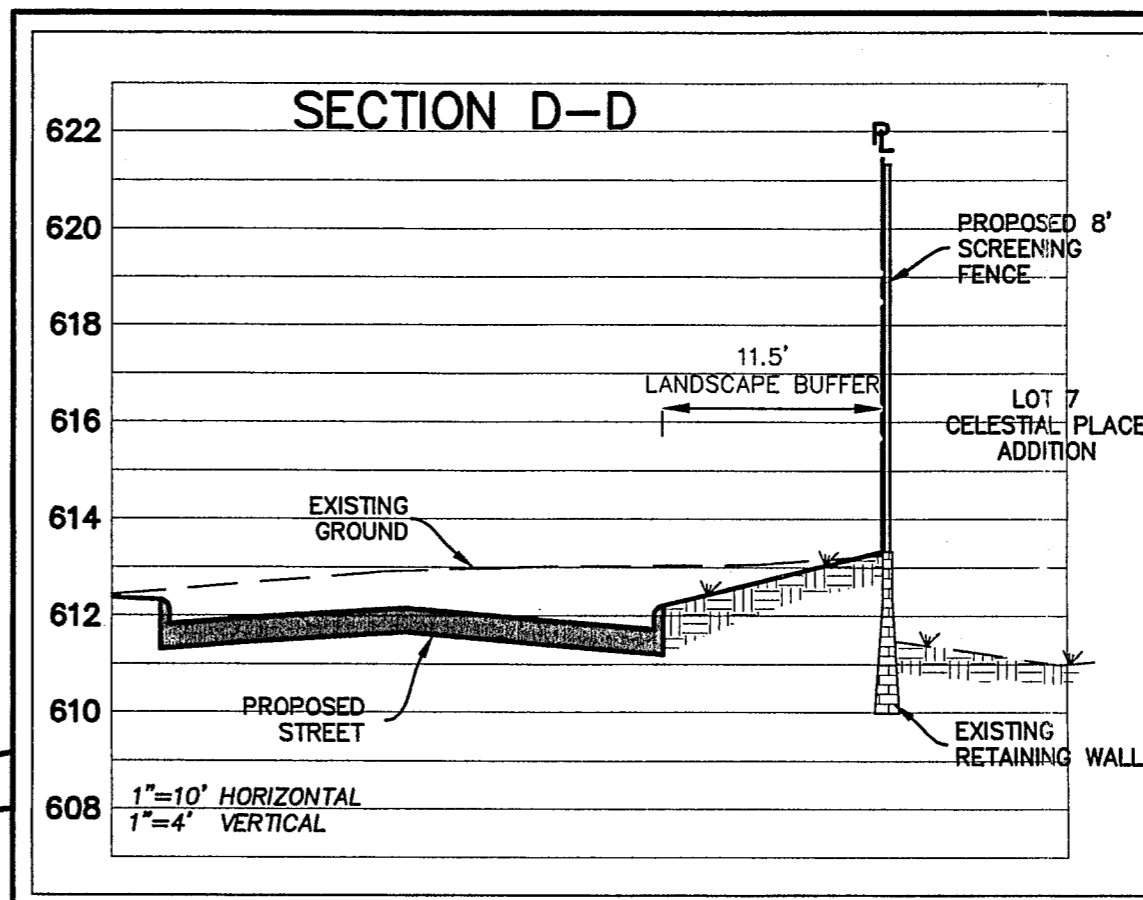
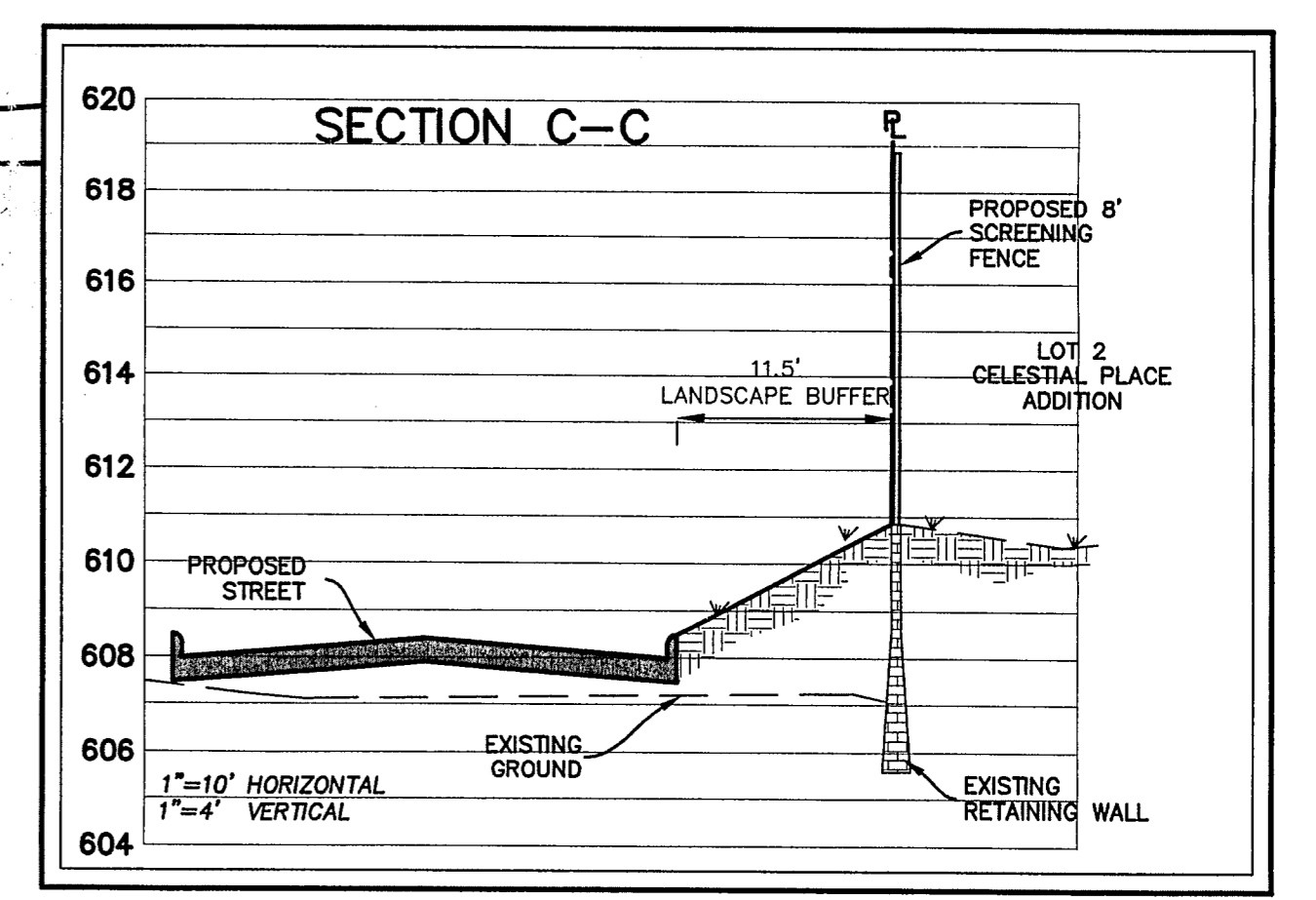
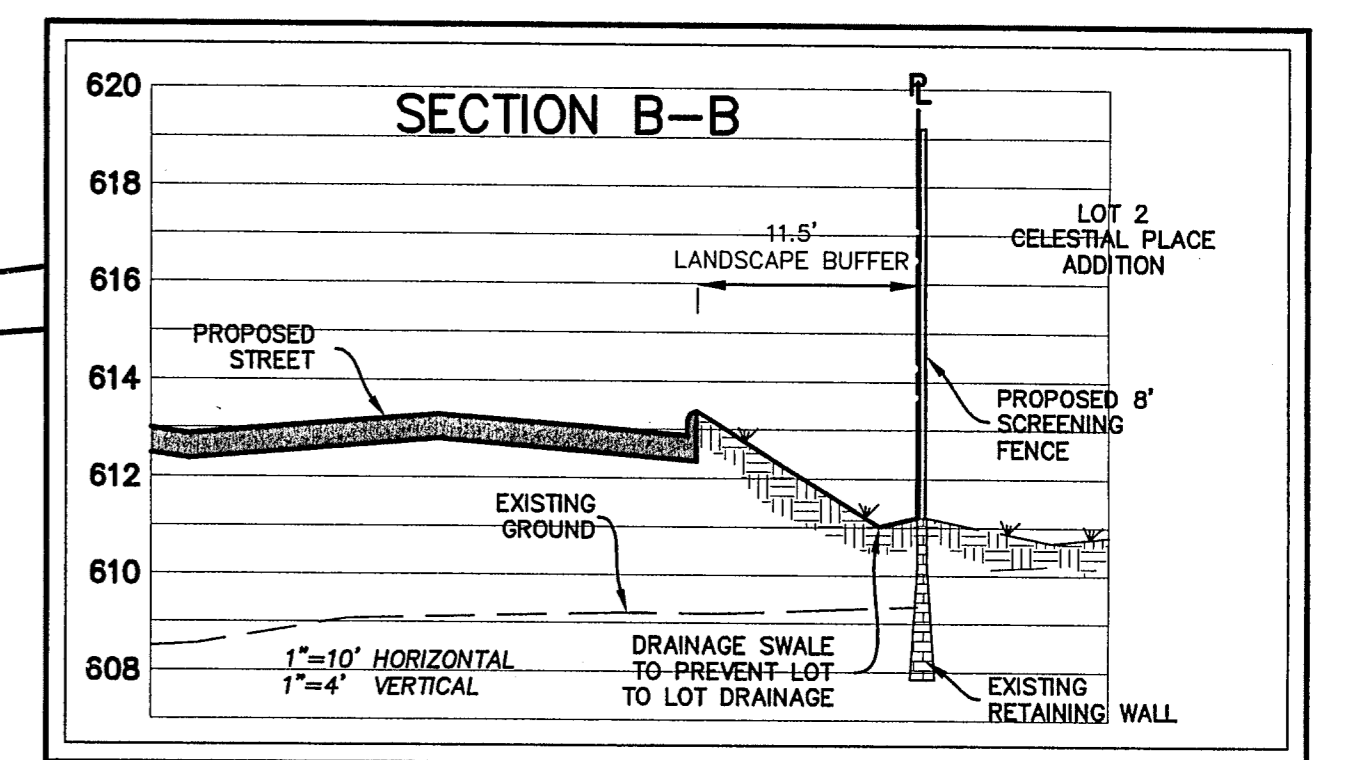
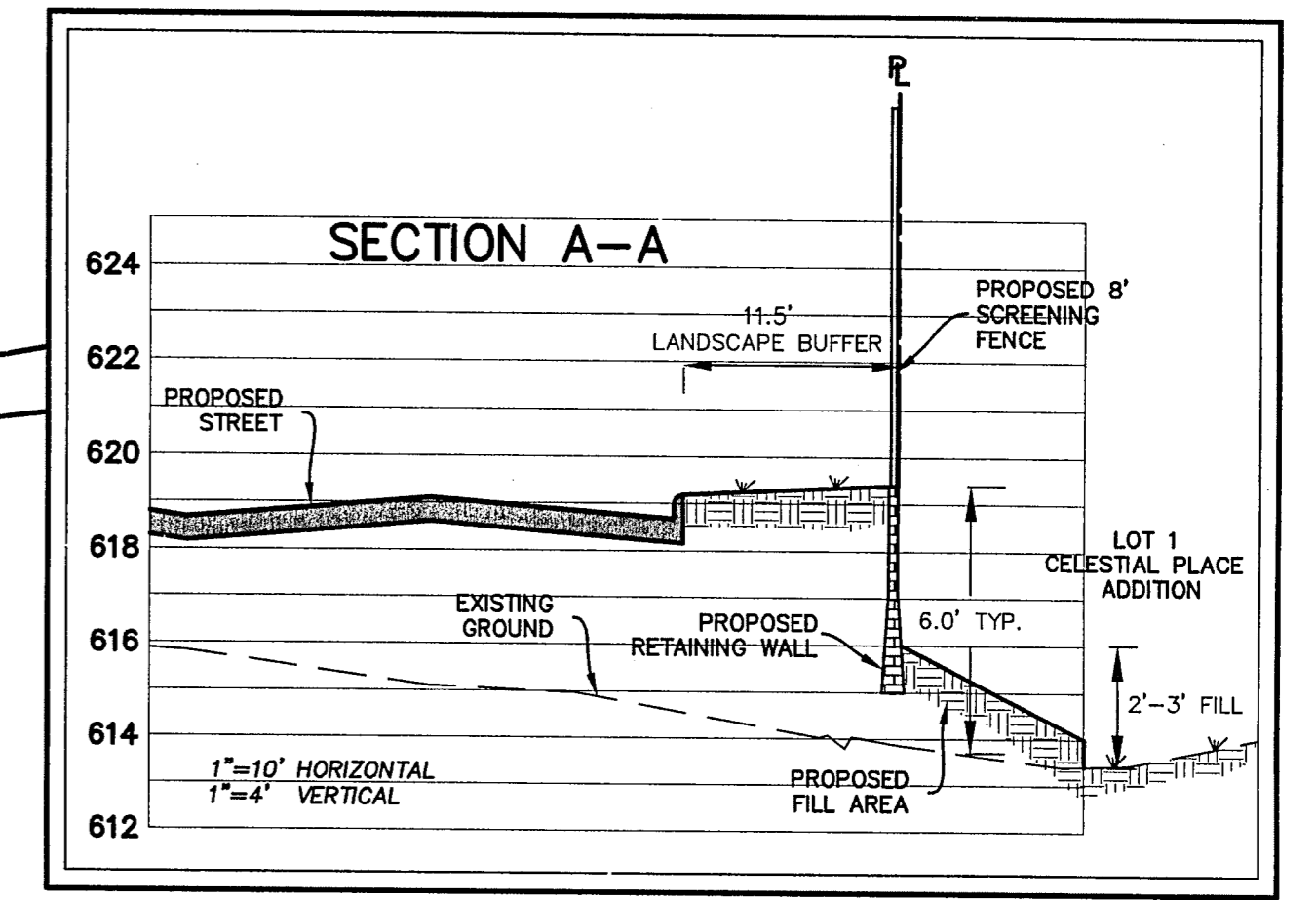
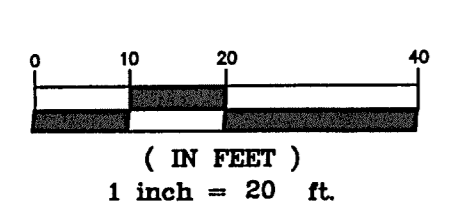


CELESTIAL ROAD
(VARIABLE WIDTH R.O.W.)



LEGEND

- - - - -715- - - EX. CONTOUR INTERVAL
- x 607.30 PROP. FINISH GRADE
- FP 607.7 PROP. FINISH PAD
- ↷ PROP. DRAINAGE FLOW DIRECTION
- TW 609.5 / BW 609.5 ELEVATION OF GROUND AT TOP OF WALL \ LOW SIDE OF WALL
- PROPOSED WALL
- EXISTING WALL

NO.	REVISIONS DURING CONSTRUCTION	BY	DATE	NO.	REVISIONS DURING PLAN REVIEW	BY	DATE

Jones & Boyd, Inc.
17090 Dallas Parkway, Suite 200
Dallas, Texas 75248
972.248.7676 office
972.248.7414 fax
www.jones-boyd.com

- Engineering
- Surveying
- Planning
- Landscape Architecture
- Construction Management

GRADING PLAN		PROJECT NO.
PRELIMINARY		CDC004
STANFORD COURT VILLAS		SHEET NO.
Town of Addison, Dallas County, Texas		1

2006-03

Drawing: H:\Projects\CD004\Revised Layout\CD004.dwg Saved By: Juke Save Time: 6/26/2006 2:09 PM Plotted By: Juke Plot Date: 6/26/2006 2:10 PM