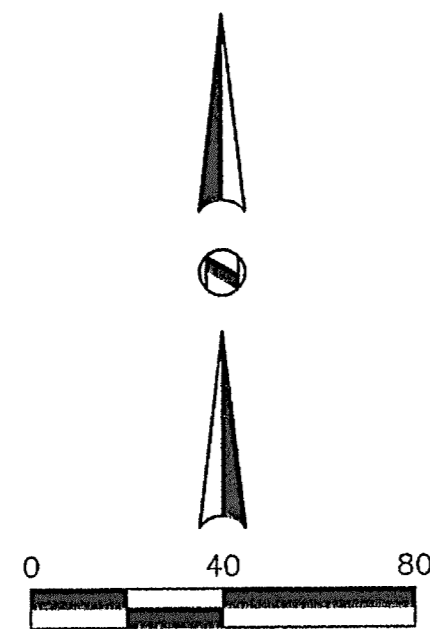
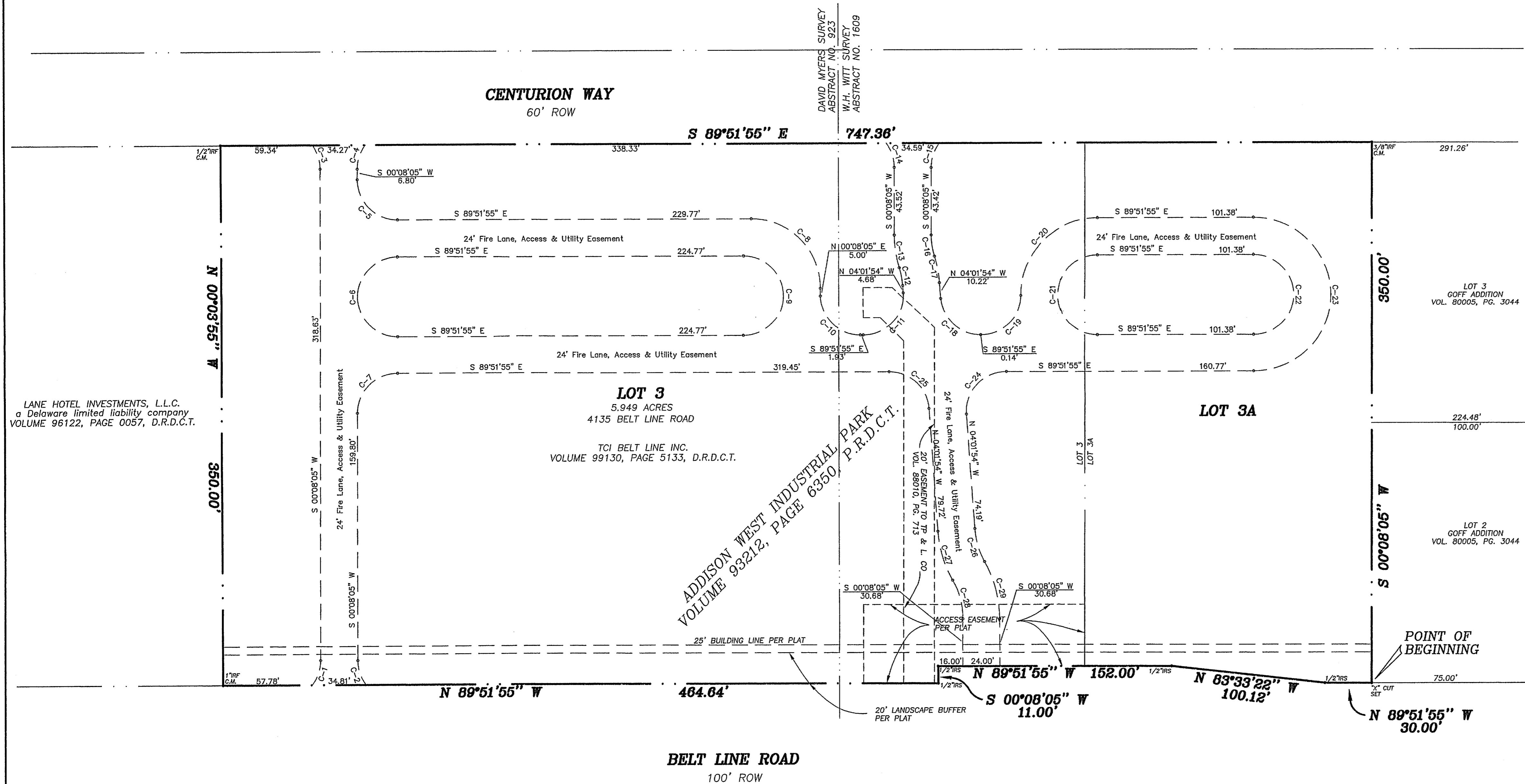


Location Map



Fire Lane Curve Data						
CURVE	RADIUS	DELTA	TANGENT	LENGTH	CHORD	BEARING
C-1	26.00'	37°43'27"	8.88'	17.12'	16.81'	S 18°59'49" W
C-2	26.00'	37°29'26"	8.82'	17.01'	16.71'	N 18°36'38" W
C-3	26.00'	36°29'25"	8.57'	16.55'	16.27'	S 18°36'07" E
C-4	26.00'	36°47'18"	8.65'	16.69'	16.41'	N 18°31'44" E
C-5	26.00'	90°00'00"	26.00'	40.84'	36.77'	N 44°51'55" W
C-6	26.00'	180°00'00"	—	81.68'	52.00'	N 00°08'05" E
C-7	26.00'	90°00'00"	26.00'	40.84'	36.77'	N 44°51'55" W
C-8	45.00'	90°00'00"	45.00'	70.88'	63.64'	S 44°51'55" E
C-9	26.00'	180°00'00"	—	81.68'	52.00'	S 00°08'05" W
C-10	26.00'	90°00'00"	26.00'	40.84'	36.77'	N 44°51'55" W
C-11	26.00'	94°09'59"	27.96'	42.73'	38.08'	S 43°03'05" W
C-12	50.00'	13°34'03"	5.95'	11.84'	11.81'	S 10°48'55" E
C-13	69.00'	17°44'02"	10.76'	21.36'	21.27'	N 08°43'56" W
C-14	26.00'	37°04'52"	8.72'	16.83'	16.53'	S 18°24'21" E
C-15	26.00'	37°21'04"	8.79'	16.95'	16.65'	N 18°48'37" E
C-16	45.00'	17°44'02"	7.02'	13.93'	13.87'	N 08°43'56" W
C-17	74.00'	13°34'03"	6.80'	17.52'	17.48'	S 10°48'55" E
C-18	26.00'	85°50'01"	24.17'	38.95'	35.41'	N 46°56'55" W
C-19	26.00'	90°00'00"	26.00'	40.84'	36.77'	S 45°08'05" W
C-20	50.00'	90°00'00"	50.00'	81.68'	70.71'	N 45°08'05" E
C-21	26.00'	180°00'00"	—	81.68'	52.00'	N 00°08'05" E
C-22	26.00'	180°00'00"	—	81.68'	52.00'	S 00°08'05" W
C-23	50.00'	180°00'00"	—	157.08'	100.00'	S 00°08'05" W
C-24	26.00'	94°09'59"	27.96'	42.73'	38.08'	N 43°03'05" E
C-25	26.00'	85°50'01"	24.17'	38.95'	35.41'	S 46°56'55" E
C-26	50.00'	25°40'23"	11.39'	22.40'	22.22'	N 16°52'06" W
C-27	74.00'	25°40'23"	16.86'	33.16'	32.88'	N 16°52'06" W
C-28	50.00'	29°50'22"	13.32'	26.04'	25.75'	S 14°47'06" E
C-29	74.00'	29°50'22"	19.72'	38.54'	38.10'	S 14°47'06" E



LANE HOTEL INVESTMENTS, L.L.C.  
a Delaware limited liability company  
VOLUME 96122, PAGE 0057, D.R.D.C.T.

**LOT 3**  
5.949 ACRES  
4135 BELT LINE ROAD  
TCI BELT LINE INC.  
VOLUME 99130, PAGE 5133, D.R.D.C.T.

ADDISON WEST INDUSTRIAL PARK  
VOLUME 93212, PAGE 6350, P.R.D.C.T.

LOT 3  
COFF ADDITION  
VOL. 80005, PG. 3044

LOT 2  
COFF ADDITION  
VOL. 80005, PG. 3044

FINAL REPLAT  
SHEET 1 OF 2

# ADDISON WEST INDUSTRIAL PARK

Situated In The

DAVID MYERS SURVEY ABSTRACT NO. 923  
W.H. WITT SURVEY ABSTRACT NO. 1609

TOWN OF ADDISON  
DALLAS COUNTY, TEXAS

**Owner**  
Beltline Realty Partners, Inc.  
4311 Oak Lawn Avenue, Suite 400  
Dallas, Texas 75219  
Telephone 214 217-1238

**Surveyor**  
RLK Engineering, Inc.  
111 West Main Street  
Allen, Texas 75013  
Telephone 972 359-1733

June 2, 2006

NOTE:  
BEARING SHOWN ARE BASED ON THE RECORDED  
PLAT OF ADDISON WEST INDUSTRIAL PARK AS  
RECORDED IN VOLUME 93212, PAGE 6350, P.R.D.C.T.

2006-11