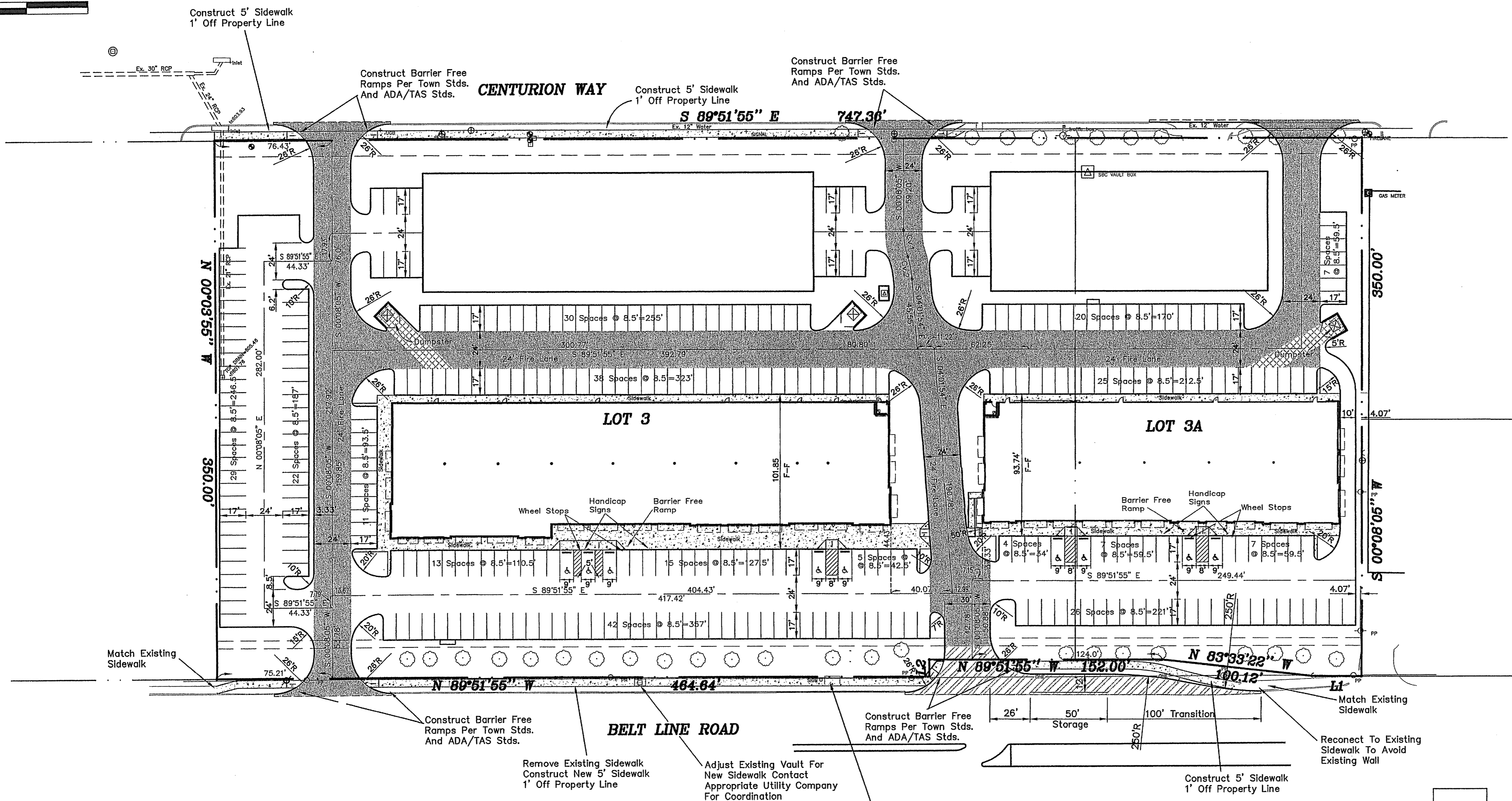


!!! CAUTION !!!
 Existing Utility Lines In Area
 Contractor To Verify Existing Utility Locations
 Contact Appropriate Utility Companies
 48 Hrs. Prior To Any Construction



!!! CAUTION !!!
 Existing Private Utility Lines On Site
 Contractor To Verify Existing Utility Locations
 Field Verify Both Location & Depth
 Visibly Mark All Existing Utilities
 Prior To Any Construction
 These Markings Are To Be Maintained
 And Remain During The Entire
 Construction Process

!!! CAUTION !!!
 Existing Utility Lines In Area
 Contractor To Verify Existing Utility Locations
 Contact Appropriate Utility Companies
 48 Hrs. Prior To Any Construction

- LEGEND**
- 5" 3500 psi Concrete W/#3 Bars 18"ocw With 6" Compacted Subgrade
 - 6" 3500 psi Concrete W/#3 Bars 18"ocw With 6" Compacted Subgrade
 - 8" 3500 psi Concrete W/#3 Bars 18"ocw With 6" Compacted Subgrade
 - 10" 3500 psi Concrete W/#3 Bars 18"ocw With 6" Compacted Subgrade
 - 4" Sidewalk Pavement
 - Expansion Joint

PRELIMINARY – FOR REVIEW ONLY
NOT FOR CONSTRUCTION

MISC. INFORMATION	REVISION	DATE	DESCRIPTION
<p>NOTE: Prior to beginning any construction or construction staking, it shall be the Contractor's responsibility to contact the civil engineer to insure that all parties are in possession of the most current set of construction documents.</p>			

MISC. INFORMATION	REVISION	DATE	DESCRIPTION

RLK ENGINEERING, LLC
 111 West Main
 Allen, Texas 75013
 (972) 359-1733 Off
 (972) 359-1833 Fax

THIS DOCUMENT IS RELEASED FOR THE PURPOSE OF INTERIM REVIEW UNDER THE AUTHORITY OF ROINNY KLINGBEIL, P.E. NO. 76831 ON JUNE 5, 2008.
 IT IS NOT TO BE USED FOR CONSTRUCTION, BIDDING, OR PERMIT PURPOSES.

SITE PLAN
ADDISON WEST INDUSTRIAL PARK
 4135 BELT LINE ROAD
 ADDISON, TEXAS

DESIGNED BY: RLK Engineering	TECH REVIEW: RLK	DRAWING FILE: 04090 PAV2.dwg	DRAWING SCALE: 1" = 40'	SHEET: C1 of 8
DRAWN BY: RLK Engineering	PEER REVIEW: RXX	DRAWING DATE: 4/11/08	PROJECT NUMBER: RLK:04090	