

SHARED PROTOTYPE

BELTLINE ROAD

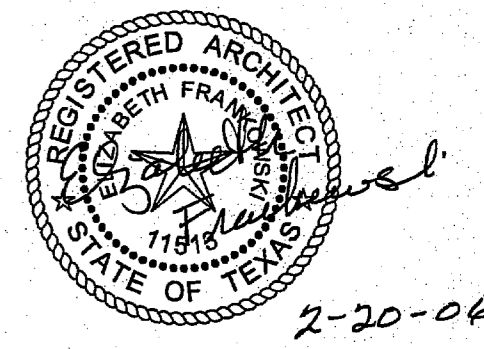
BUSINESS AVENUE

CAPITAL ONE
DFW-35 ADDISON
 BELT LINE RD. & MARSH LN.
 ADDISON, TEXAS

Capital One
 Capital One
 Corp. Design & Construction
 313 Carondelet 8th Floor
 New Orleans, LA 70112

LEVINSON
 ASSOCIATES, L.P.
 6117 Richmond Ave., Suite 200 Houston, Texas 77057
 tel 713.787.0000 fax 713.850.8250
 ARCHITECTURE PLANNING INTERIOR DESIGN

DRAWN BY:	CHECKED BY:	REVISED BY:	REV. BY:
REVISIONS			



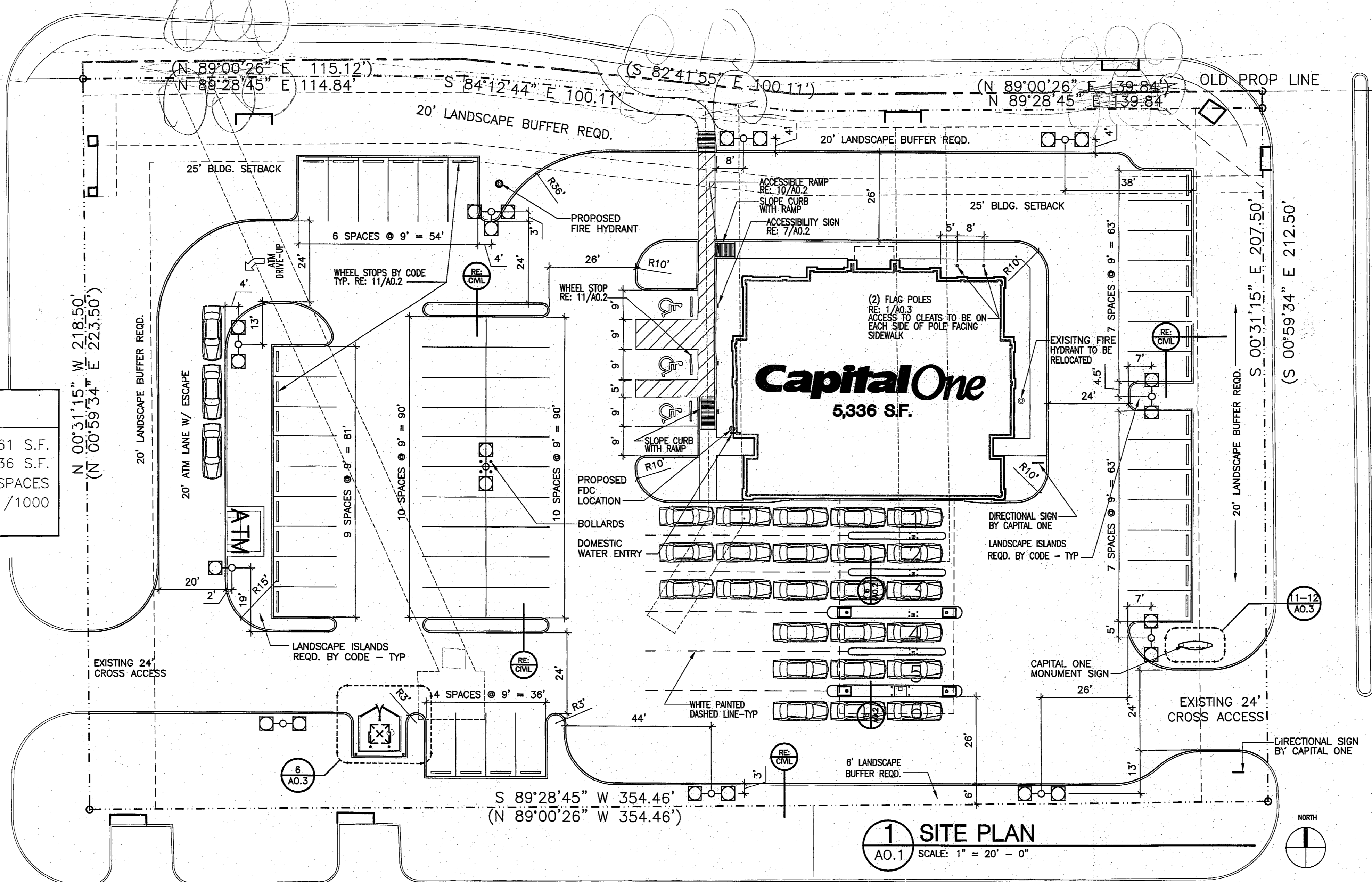
LALP Project Number: 25271.000
 Issued For: PERMIT

A0.1
 SITE PLAN
 Issue Date: FEBRUARY 20, 2006

- GENERAL NOTES**
1. REFER CIVIL DRAWINGS FOR TYPE AND LOCATION OF PAVEMENT MARKINGS AND DIRECTIONAL CONTROL SIGNAGE.
 2. REFER CIVIL DRAWINGS FOR LIMITS OF SITE WORK.
 3. REFER CIVIL DRAWINGS FOR LOCATION AND TYPE OF SITE PAVING
 4. REFER CIVIL DRAWINGS FOR DIMENSIONAL CONTROL PLAN
 5. COORDINATE LOCATION OF SITE LIGHT POLES WITH OVERHEAD UTILITIES AND NOTIFY ARCHITECT OF ANY CONFLICTS PRIOR TO CONSTRUCTION. MAINTAIN MINIMUM CLEARANCES WITH ELECTRICAL LINES.
 6. REFER CIVIL DRAWINGS FOR METES AND BOUNDS.

DEVELOPMENT SYNOPSIS

TOTAL LAND AREA	(± 1.73 AC.)	75,361 S.F.
TOTAL BUILDING AREA		5,336 S.F.
TOTAL PARKING PROVIDED		57 SPACES
PARKING RATIO PROVIDED		7.0 /1000



1 SITE PLAN
 A0.1 SCALE: 1" = 20' - 0"