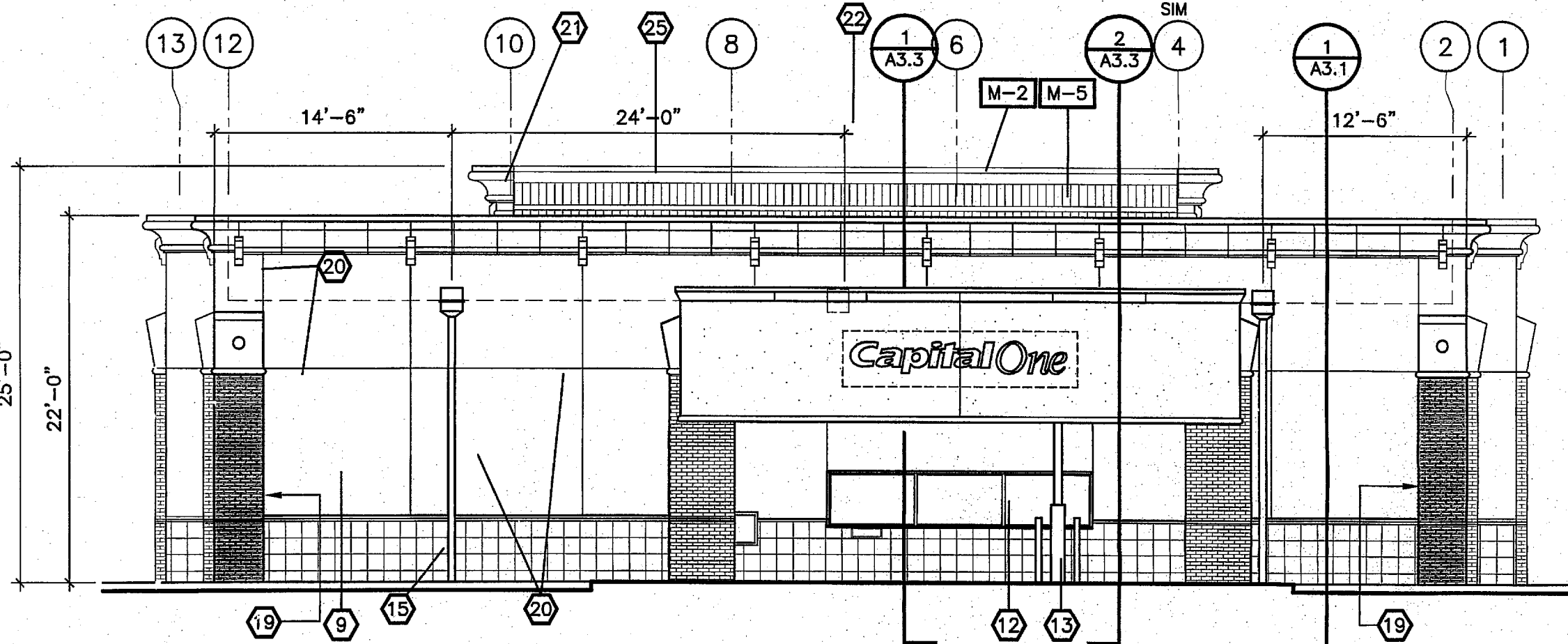
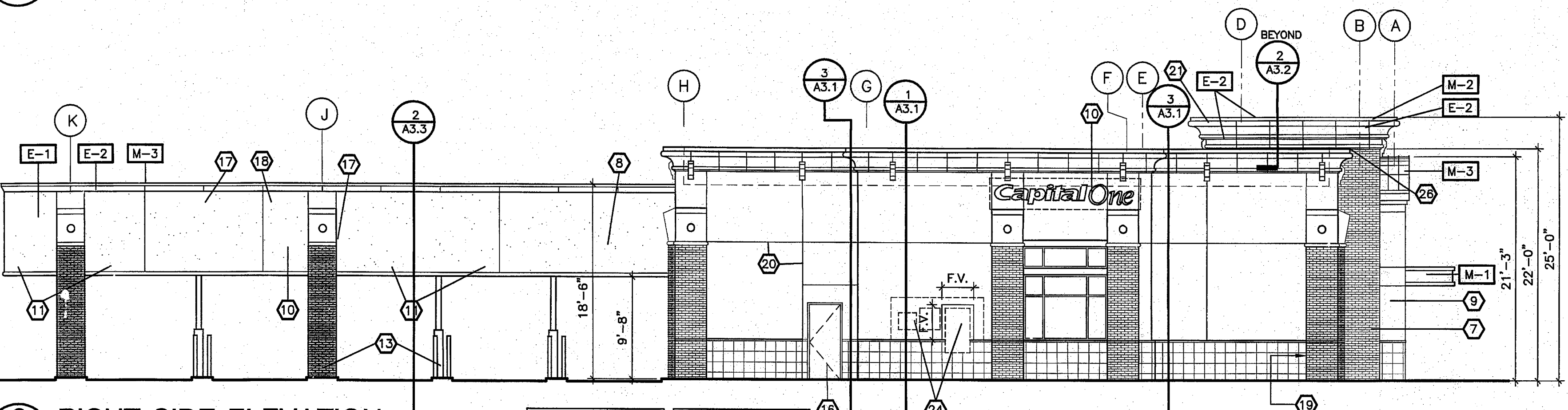


**4 FRONT ELEVATION**  
A2.1 SCALE: 1/8" = 1' - 0"



**3 REAR ELEVATION**  
A2.1 SCALE: 1/8" = 1' - 0"

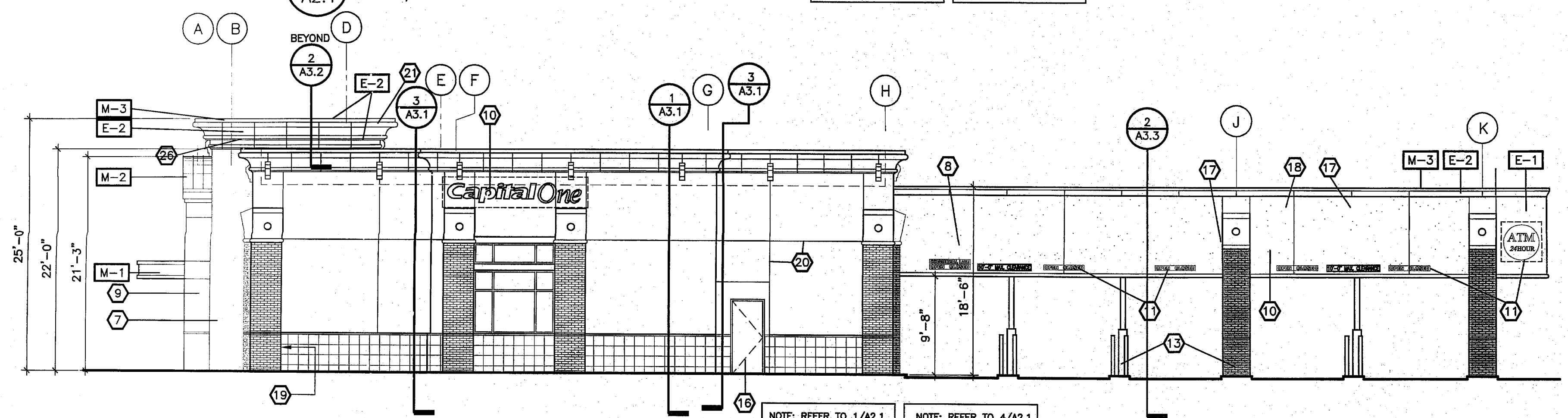
NOTE: REFER TO 4/A2.1 FOR TYPICAL KEY NOTES & FINISH MATERIALS



**2 RIGHT SIDE ELEVATION**  
A2.1 SCALE: 1/8" = 1' - 0"

NOTE: REFER TO 4/A2.1 FOR TYPICAL KEY NOTES & FINISH MATERIALS

NOTE: REFER TO 1/A2.1 FOR TYPICAL REVEAL & JOINT LOCATION



**1 LEFT SIDE ELEVATION**  
A2.1 SCALE: 1/8" = 1' - 0"

NOTE: REFER TO 1/A2.1 FOR TYPICAL REVEAL & JOINT LOCATION

NOTE: REFER TO 4/A2.1 FOR TYPICAL KEY NOTES & FINISH MATERIALS

EXTERIOR FINISH SCHEDULE						
KEY	MATERIAL	DESCRIPTION	MANUFACTURER	COLOR NAME	COLOR NUMBER	TEXTURE NOTES
E-1	EIFS FINISH	STUCCO FIELD COLOR 'A'	COREV		CS 1100	2.0 1
E-2	EIFS FINISH	EIFS TRIM COLOR	COREV		CS 1102	.75 1
E-3	EIFS FINISH	STUCCO FIELD COLOR 'B'	COREV		CS 1096	2.0 1
E-4	EIFS FINISH	PLASTER SOFFIT	COREV		CS 1100	.75 1
M-1	METAL	CANOPY	THE GARLAND CO.	CHAMPAGNE		2
M-2	METAL	STANDING SEAM ROOF	THE GARLAND CO.	CHAMPAGNE		2
M-3	METAL	COPING AT PARAPETS	THE GARLAND CO.	SIERRA WHITE		2
M-4	METAL	SCUPPERS & DOWNSPOUTS	THE GARLAND CO.	SIERRA WHITE		2
M-5	METAL	R-MER SPAN WALL PANEL	THE GARLAND CO.	WHITE		2&3
S-1	STONE	LIMESTONE-FULL STONE		ALAMO SUNSET	SIZE-8"x8"x4" THICK MAXIMUM	4&5
S-2	STONE	CAST STONE	SITWORKS 281-931-1000	NATURAL		4
S-3	STONE	LIMESTONE-FULL STONE		ALAMO SUNSET	2"-8" RANGE ASHLAR PATTERN 4" THICK MAXIMUM	4&5
S-4	STONE	GRANITE	STONE QUARRY	VENETIAN GOLD OR APPROVED EQUAL		
SF-1	ALUM	STOREFRONT		CLEAR ANODIZED		

- NOTES:
- EIFS TO BE COREV OR APPROVED EQUAL
  - THE GARLAND COMPANY, CONTACT JOHN DIESTE, 281-361-9274
  - BACK SIDE OF PARAPET WHERE SCHEDULED. RE: WALL SECTIONS
  - PROVIDE COLORED MORTAR TYPICAL, BONSAL COLOR: 01-ALMOND.
  - CONTACT UPCHURCH KIMBROUGH, TANYA BRYAN, 713-957-1520. JOINT SIZE 3/8" TO 5/8" RANGE @ LEDGE STONE W/ 1/2" RAKED JOINT. JOINT SIZE 3/8" AT 12"x12" STONE W/ TOOLED JOINT.

**EXTERIOR ELEVATION KEYED NOTES**

- | DESCRIPTION  |
|--|
| 1 SCHEDULED ALUMINUM STOREFRONT  |
| 2 ALUMINUM TRIM TO MATCH STOREFRONT  |
| 3 EIFS BAND  |
| 4 PILASTER. RE: 3/A3.3   |
| 5 STONE TILE   |
| 6 CAST STONE CAP   |
| 7 SCHEDULED STONE VENEER   |
| 8 ROOF LINE BEYOND   |
| 9 1" STUCCO ON EXTERIOR SHEATHING  |
| 10 SIGN BY OWNER. RE: ELECTRICAL DRAWINGS PROVIDE EXT GRADE PLYWOOD IN LIEU OF SHFG @ SIGN LOCATIONS. COOR LOCATIONS W/ SIGN SERVICES SIGN COMPANY DWGS.         |
| 11 SIGN BY G.C. RE: ELECTRICAL DRAWINGS PROVIDE EXT GRADE PLYWOOD IN LIEU OF SHFG @ SIGN LOCATIONS.  |
| 12 TELLER WINDOW. RE: 1/A3.3   |
| 13 REMOTE VAT UNIT   |
| 14 SCHEDULED STANDING SEAM MTL ROOF  |
| 15 PREFINISHED MTL SCUPPERS & 5"x5" DOWNSPOUTS   |
| 16 EXT. H.M. DOOR & FRAME PAINT TO MATCH ADJ PLASTER   |
| 17 SCORED "A" REVEAL-TYP. RE: 3/M.2  |
| 18 SCORED "B" REVEAL-TYP. RE: 6/M.2  |
| 19 THRU WALL EXPANSION JOINT. RE: 8&9/M.2  |
| 20 PLASTER CONTROL JOINT-TYP   |
| 21 RETURN CORNICE & FINISH MATERIALS TO BACK SIDE OF PARAPET   |
| 22 LOUVER. RE: 3/A3.2  |
| 23 THRU WALL EXPANSION JOINT. RE: 7/M.2  |
| 24 ELECTRICAL SERVICE-PAINT: RE: ELEC DRAWINGS PROVIDE EXT GRADE PLYWOOD IN LIEU OF SHFG FURR OUT PLASTER WALL AS REQUIRED TO FLUSH OUT WITH STONE WANSOT BELOW. |
| 25 PREFINISHED MTL PANELS. GARLAND R-MER COR THRU FASTENED WALL PANEL SYSTEM   |

**CAPITAL ONE**  
**DFW-35 ADDISON**  
BELT LINE RD. & MARSH LN.  
ADDISON, TEXAS

**Capital One**  
Capital One  
Corp. Design & Construction  
313 Carondelet 8th Floor  
New Orleans, LA 70112

**LEVINSON**  
ASSOCIATES, L.P.  
6117 Richmond Ave., Suite 200 Houston, Texas 77057  
tel 713.787.0000 fax 713.850.8250  
ARCHITECTURE PLANNING INTERIOR DESIGN

REVISIONS	CHECKED BY:	REVISED BY:	REV. BY:

LALP Project Number: 25271.000  
Issued For: PERMIT  
2-20-06

**A2.1**  
EXTERIOR ELEVATIONS  
Issue Date: FEBRUARY 20, 2006