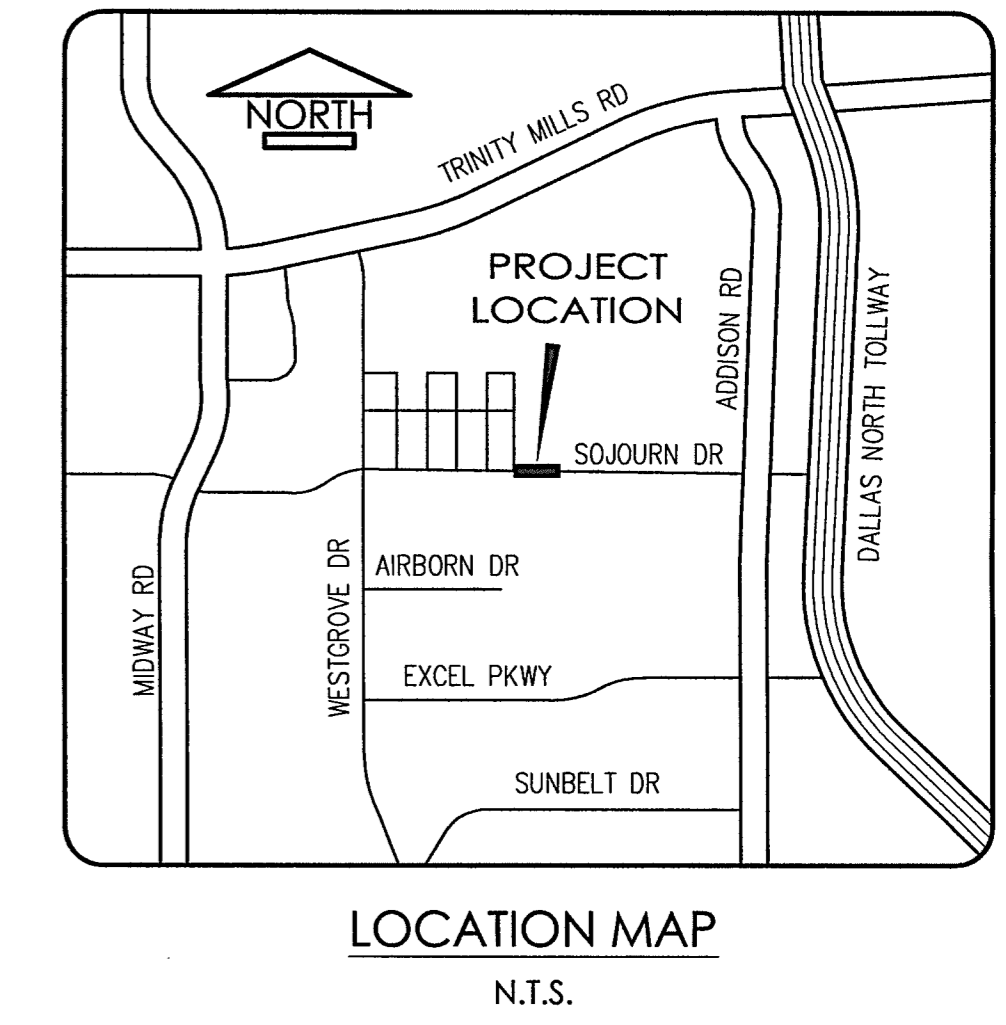
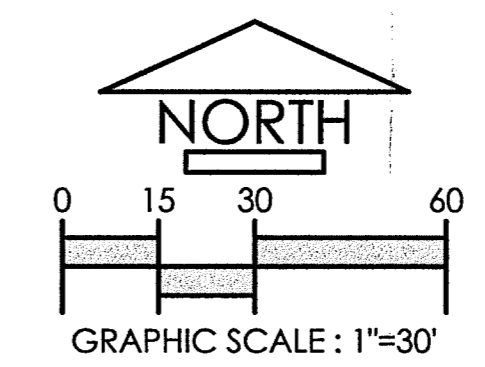
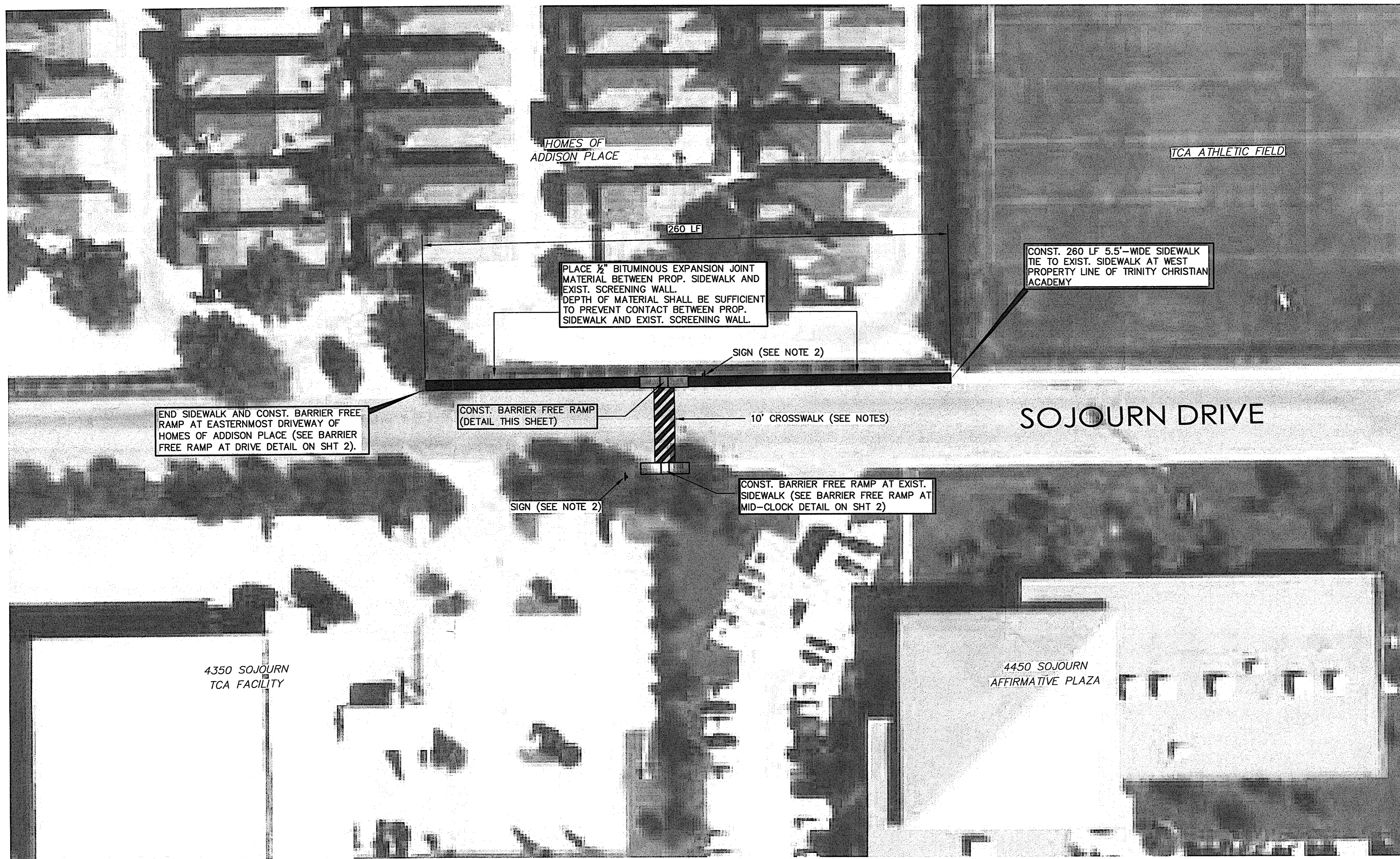
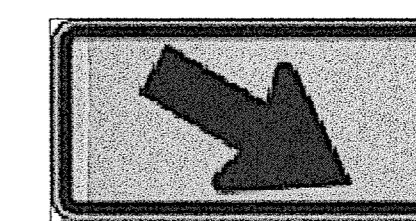


SI-1000



W16-7pR

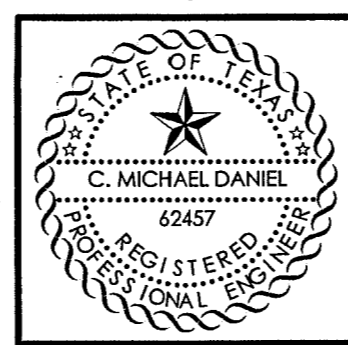


S1-1

GENERAL NOTES

1. A 10-FOOT WIDE CROSSWALK, MARKED WITH HIGH CONSPICUITY REFLECTIVE THERMOPLASTIC MARKINGS IN A LADDER CONFIGURATION CONSISTING OF 24" SOLID STRIPE, 24" GAP, 24" SOLID STRIPE.
2. AN S1-1 CROSSWALK WARNING SIGN WITH A W16-7pR PLAQUE IS TO BE PLACED AT LEAST 2 FEET OFF THE CURB IMMEDIATELY ADJACENT TO THE CROSSWALK.
3. SEE SIDEWALK AND RAMP DETAILS ON SHEET 2.

MD



REVISIONS	DATE

NDM NATHAN D. MAIER
CONSULTING ENGINEERS, INC.
www.ndmce.com

Two Northpark 8080 Park Lane Suite 600
Dallas, Texas 75231 214.739.4741

SIDEWALK CONSTRUCTION PLAN

TRINITY CHRISTIAN ACADEMY
CITY OF ADDISON, DALLAS COUNTY, TEXAS

DESIGN	DRAWN	SCALE	DATE	NOTES
NDMCE	NDMCE	1"=30'	SEP. 25, 2007	07076.A-PL01

SHEET NO.	JOB NUMBER
1 / 2	07-08-076

9-25-07