



JW Operating Company

HEADQUARTERS

ADDISON, TX

HIDELL
ASSOCIATES
ARCHITECTS

3033 KELLWAY DRIVE, SUITE 120
CARROLLTON, TEXAS 75006 (972) 416-4666
FAX (972) 416-0169 E-MAIL: tbaase@hidell.com



10.16.2007

OWNER
JW OPERATING COMPANY
15508 WRIGHT BROTHERS DR.
ADDISON, TX 75001
PHONE: (972) 238-8191
FAX: (972) 991-0704
ggradick@jwoperating.com

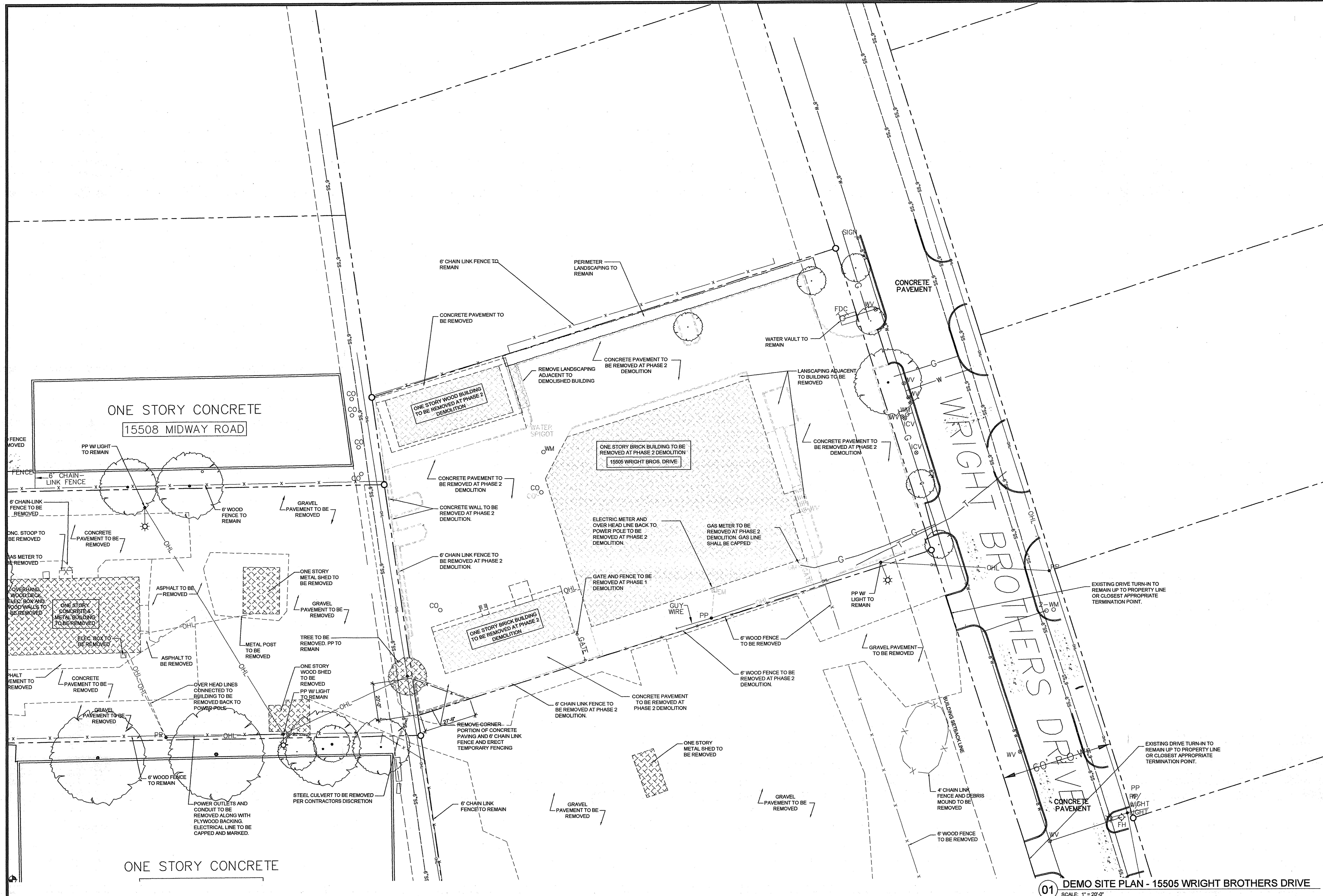
CIVIL ENGINEER
PACHECO KOCH CONSULTING ENGINEERS
8380 N CENTRAL EXPRESSWAY SUITE 1000
DALLAS, TX 75208-1612
PHONE: (972) 235-3031
FAX: (972) 235-6544

STRUCTURAL ENGINEER
R.L. GOODSON
5445 LA SIERRA, SUITE 300-LB 17
DALLAS, TX 75201
PHONE: (214) 739-8100
FAX: (214) 739-6354

MEP ENGINEER
BASHARRKHAH ENGINEERING
1201 TURTLE CREEK BLVD.
DALLAS, TX 75207
PHONE: (214) 720-1005
FAX: (214) 720-1005

LANDSCAPE ARCHITECT
CAYE COOK & ASSOCIATES
5646 MILTON SUITE 617
DALLAS, TX 75206
PHONE: (214) 739-9105
FAX: (214) 373-0170
barbara@colandscapearch.com

ISSUE FOR REVIEW ONLY



01 DEMO SITE PLAN - 15505 WRIGHT BROTHERS DRIVE
SCALE: 1" = 20'-0"

DEMOLITION NOTES

DEMOLITION WORK INCLUDES

1. REMOVE BUILDINGS - SUCH BUILDINGS ARE INDICATED BY DASHED LINES AND HATCHING ON THIS DRAWING.
2. REMOVE PARKING - REMOVE PARKING INCLUDING CURB AND GUTTER. PARKING IS INDICATED BY DASHED LINES. COORDINATE WITH GENERAL CONTRACTOR RELATIVE TO PARKING TO REMAIN FOR CONTRACTORS USE DURING CONSTRUCTION.
3. REMOVE WALKS - REMOVE WALKS. WALKS TO BE REMOVED ARE INDICATED BY DASHED LINE. REMOVAL OF WALKS OUTSIDE THE PROPERTY LINE IS TO BE COORDINATED WITH THE GENERAL CONTRACTOR, RELATIVE TO SCHEDULING OF WORK.
4. REMOVE RETAINING WALLS - REMOVE RETAINING WALLS WITHIN THE PROPERTY LINE, AS INDICATED BY DASHED LINES ON DRAWINGS.
5. CURB CUTS - REMOVE CURB AND GUTTER AS INDICATED.
6. REMOVE TREES - TREES TO BE REMOVED ARE INDICATED BY HATCHING.
7. PROTECT TREES TO REMAIN - TREES TO REMAIN ARE INDICATED BY SOLID LINES AT THE DRIP LINE, WITHOUT HATCHING.

HAZARDOUS MATERIALS

1. ASBESTOS ABATEMENT IS ADDRESSED BY SEPARATE CONTRACT. ABATEMENT WILL BE COORDINATED WITH WORK OF THE BUILDING DEMOLITION CONTRACTOR.

UTILITIES

1. INTERRUPTION OF UTILITIES - UTILITIES SHALL REMAIN ACTIVE, OR SHALL BE RE-ACTIVATED TO PROVIDE FOR NECESSARY UTILITY SERVICES FOR ABATEMENT CONTRACTOR OR OTHERS REQUIRING ACCESS TO WATER AND ELECTRICITY.
2. DEACTIVATION OF UTILITIES - UTILITIES TO INDIVIDUAL BUILDINGS WILL BE DEACTIVATED AS NECESSARY, ACCORDING TO A PREDETERMINED SCHEDULED MAINTAINED AND COORDINATED BY THE GENERAL CONTRACTOR.
3. CUT OFF PIPE OR CONDUIT AND CAP A MINIMUM OF 24" BELOW EXISTING GRADE. MARK LOCATION OF CAPPED LINE FOR COORDINATION WITH NEW CONSTRUCTION.
4. WATER AND GAS UTILITY LINES THAT SERVICE BUILDINGS TO BE DEMOLISHED SHALL BE REMOVED TO NEAREST UTILITY METER. MARK LOCATION OF REMOVED LINES FOR COORDINATION WITH NEW CONSTRUCTION.
5. OVERHEAD ELECTRICAL LINES THAT SERVICE BUILDINGS TO BE DEMOLISHED SHALL BE REMOVED TO NEAREST POWER POLE.
6. CABLE AND PHONE LINES THAT SERVICE BUILDINGS TO BE DEMOLISHED SHALL BE REMOVED TO THE NEAREST POWER POLE OR UTILITY SUPPLIER'S BOX NOT LOCATED ON DEMOLISHED BUILDING.
7. SANITARY SEWER LINES THAT SERVICE BUILDINGS TO BE DEMOLISHED SHALL BE REMOVED TO THE NEAREST EASEMENT/ROW. SANITARY SEWER LINES SHALL HAVE A DOUBLE CLEANOUT INSTALLED, CUT AND PLUGGED AT THE EASEMENT/ROW LINE PRIOR TO DEMOLITION OF THE STRUCTURE. ALL UTILITY WORK TO BE INSPECTED BY THE TOWN OF ADDISON PUBLIC WORKS DEPARTMENT. CONTACT DAVE WILDE AT 972-450-2847 FOR INSPECTIONS.
8. CONTACT THE TOWN OF ADDISON FINANCE DEPARTMENT AT 972-450-7082 TO DISCONNECT WATER SERVICE PRIOR TO DEMOLITION OF ANY BUILDINGS BEING SERVED BY THAT SERVICE.
9. WATER, SEWER LINES, TAPS, AND OTHER UTILITY LINES SHALL BE TERMINATED AS REQUIRED BY THE 2003 IPC AND THE TOWN OF ADDISON PUBLIC WORKS DEPARTMENT.

BUILDING DEMOLITION SCHEDULE

1. DEMOLITION OF INDIVIDUAL BUILDING SHALL BE SCHEDULED TO COINCIDE WITH WORK COMPLETED BY THE ASBESTOS ABATEMENT CONTRACTOR.

2. BUILDINGS WILL GENERALLY BE RELEASED FOR DEMOLITION IN GROUPS. THESE GROUPS OF BUILDINGS WILL BE COORDINATED BY THE GENERAL CONTRACTOR TO INSURE SAFE WORKING CONDITIONS AND PROPER ACCESS TO THE LOCATIONS OF THOSE BUILDINGS TO BE DEMOLISHED.

BUILDING DEMOLITION SCHEDULE

1. DEMOLITION OF INDIVIDUAL BUILDING SHALL BE SCHEDULED TO COINCIDE WITH WORK COMPLETED BY THE ASBESTOS ABATEMENT CONTRACTOR.

2. BUILDINGS WILL GENERALLY BE RELEASED FOR DEMOLITION IN GROUPS. THESE GROUPS OF BUILDINGS WILL BE COORDINATED BY THE GENERAL CONTRACTOR TO INSURE SAFE WORKING CONDITIONS AND PROPER ACCESS TO THE LOCATIONS OF THOSE BUILDINGS TO BE DEMOLISHED.

PREPARATION FOR DEMOLITION

1. AIR-CONDITION REFRIGERANT - REMOVE REFRIGERANT FROM AIR-CONDITIONING EQUIPMENT BEFORE STARTING DEMOLITION ON A BUILDING. REMOVAL AND STORAGE OF REFRIGERANT SHALL BE IN ACCORDANCE WITH RECOGNIZED STANDARDS AND REGULATIONS.
2. REFER TO THE CITY OF ADDISON'S RECOMMENDATIONS RELATIVE TO TEMPORARY EROSION AND SEDIMENTATION CONTROL MEASURES. DO NOT COMMENCE WITH SITE CLEARING OPERATIONS OR DEMOLITION UNTIL SUCH MEASURES ARE IN PLACE.

PROTECTION

1. PROTECT EXISTING SITE ENTRIES AND FENCES AS INDICATED AT THE PERIMETER OF THE SITE(S). COORDINATE REMOVAL OF EXISTING PERIMETER FENCING WITH GENERAL CONTRACTOR TO INSURE SECURITY OF THE SITE.

2. PROTECT EXISTING UTILITIES, WHEN SUCH UTILITIES ARE NOT INDICATED TO BE ABANDONED AND WHERE SPECIFIC PROTECTION IS INDICATED.

3. ERECT TEMPORARY PROTECTION, SUCH AS WALKS, FENCES, AND TREE PROTECTION WHERE REQUIRED BY AUTHORITIES HAVING JURISDICTION AND AS INDICATED.

4. TREE PROTECTION - ERECT A PLAINLY VISIBLE FENCE AROUND DRIP LINE OF INDIVIDUAL TREES OR AROUND PERIMETER DRIP LINE OF GROUPS OF TREES TO REMAIN. DO NOT STORE CONSTRUCTION MATERIALS, DEBRIS, OR EXCAVATED MATERIAL WITHIN FENCED AREA. DO NOT PERMIT VEHICLES, EQUIPMENT, OR FOOT TRAFFIC WITHIN FENCED AREA. MAINTAIN FENCED AREA FREE OF WEEDS AND TRASH. REFER TO DETAIL IN DRAWINGS AND SPECIFICATIONS, RELATIVE TO TREE PROTECTION FOR ADDITIONAL INFORMATION.

DEMOLITION

1. DEMOLISH INDICATED EXISTING BUILDING AND STRUCTURES AND SITE IMPROVEMENTS COMPLETELY.
2. DEMOLISH BELOW-GRADE CONSTRUCTION, INCLUDING BASEMENTS, FOUNDATION WALL, AND FOOTINGS COMPLETELY. PIERS SHALL BE DEMOLISHED TO A DEPTH OF NOT LESS THAN 36" BELOW EXISTING GRADE.

SITE RESTORATION

1. BUILD-BACK GRADES IN THE AREA OF THE SITE(S) WILL BE ADDRESSED IN FUTURE CONSTRUCTION DRAWINGS. PROVIDE A CLEAN AND CONSISTANT GRADE FREE OF DEMOLITION DEBRIS THAT PROVIDES POSITIVE SITE DRAINAGE.
2. BUILD-BACK OF GRADES IN THE AREA OF THE BUILDING SHALL BE CAREFULLY MONITORED TO INSURE THAT FILL MATERIALS ARE FREE OF VOIDS AND EXISTING CONSTRUCTION COMPONENTS.

TITLE

DEMO SITE PLAN - 15505 WRIGHT BROTHERS DRIVE

REVISIONS

JOB NO. 26010

Issue Date: XX/XX/XX

Drawn By:

Checked By:

SHEET NO.

DEMO-102

ISSUE FOR REVIEW ONLY