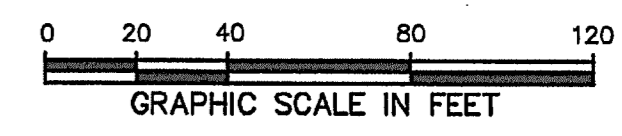
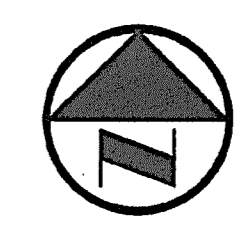


VICINITY MAP
(NOT TO SCALE)



LEGEND

B	BOLLARD
EM	ELECTRIC METER
FP	POWER POLE
LS	LIGHT STANDARD
WM	WATER METER
WV	WATER VALVE
ICV	IRRIGATION CONTROL VALVE
FH	FIRE HYDRANT
FDC	FIRE DEPARTMENT CONNECTOR
CO	CLEANOUT
MH	MANHOLE
TSC	TRAFFIC SIGNAL CONTROL
TSP	TRAFFIC SIGNAL POLE
TEF	TELEPHONE BOX
FL	FLAG LIGHT
FP	FLAG POLE
SIGN	TRAFFIC SIGN
---	PROPERTY LINE
-X-	FENCE
OH	OVERHEAD UTILITY LINE
E	UNDERGROUND ELECTRIC LINE
T	UNDERGROUND TELEPHONE LINE
C	UNDERGROUND CABLE LINE
---	PROPOSED DRAINAGE BOUNDARY

DA #1
0.83
7.25

PROPOSED DRAINAGE AREA NUMBER
PROPOSED DRAINAGE AREA (ACRES)
PROPOSED DRAINAGE DISCHARGE

GRADING AND DRAINAGE GENERAL NOTES

- REFER TO GEOTECHNICAL REPORT FOR REQUIREMENTS REGARDING FILL COMPACTION AND MOISTURE CONTENT.
- UNLESS NOTED, ALL FILL IS TO BE COMPACTED TO A MINIMUM OF 95% STANDARD PROCTOR DENSITY WITHIN 3% OF OPTIMUM MOISTURE CONTENT. FILL TO BE PLACED IN A MAXIMUM OF 6" LIFTS.
- SIDEWALKS AND ACCESSIBLE ROUTES SHALL HAVE A SLOPE NO GREATER THAN 5% AND A CROSS FALL NO GREATER THAN 2% UNLESS NOTED OTHERWISE.
- GRADING OF ALL HANDICAPPED SPACES AND ROUTES TO CONFORM TO STATE, LOCAL AND FEDERAL GUIDELINES. 5. UNLESS NOTED, STORM DRAIN LINES MAY BE OF THE FOLLOWING MATERIALS:
 - RCP C-76, CLASS III
 - ADS N-12
 - HANCOX H-Q
 AND INSTALLED IN ACCORDANCE WITH MANUFACTURER'S SPECIFICATIONS.
- UNLESS NOTED, GRATE INLET TO BE "AMERICAN INDUSTRIAL PRE-CAST PRODUCTS, INC." PRECAST CATCH BASIN, SIZED AS SHOWN, OF APPROVED EQUAL.
- FINAL PAVING, CURB AND SIDEWALK ELEVATIONS WILL BE PLACED AT PLUS OR MINUS 0.03 FOOT.
- REFER TO LANDSCAPE SPECIFICATION FOR SEEDING AND SODDING REQUIREMENTS.
- ANY CONCRETE, ROCK OR MATERIAL DEEMED UNSUITABLE FOR SUBGRADE, BY ENGINEER, SHALL BE DISPOSED OF OFFSITE AT CONTRACTOR'S EXPENSE.
- TRENCH BACKFILL MATERIAL SHALL CONFORM TO THE REQUIREMENTS OF NCTCOG ITEM 6.2.10, AND SHALL BE MECHANICALLY COMPACTED IN ACCORDANCE WITH NCTCOG ITEM 6.2.9 TO A MINIMUM OF 95% STANDARD PROCTOR DENSITY UNLESS OTHERWISE SHOWN ON THESE PLANS OR STATED IN THE STANDARD CITY SPECIFICATIONS.
- EMBEDMENT SHALL CONFORM TO THE REQUIREMENTS OF NCTCOG ITEM 6.2.9 UNLESS OTHERWISE SHOWN ON THESE PLANS OR STATED IN THE STANDARD CITY SPECIFICATIONS.
- A ROUND MANHOLE COVER MEETING CITY SPECIFICATIONS SHALL BE PLACED IN ALL INLET TOPS. THE MANHOLE COVER SHALL BE PLACED NEAR THE OUTLET PIPE.
- ALL CONCRETE FOR INLETS AND DRAINAGE STRUCTURES SHALL CONFORM TO NCTCOG ITEM 7.4.5, CLASS "A" UNLESS OTHERWISE SHOWN ON THESE PLANS OR STATED IN STANDARD CITY SPECIFICATIONS.
- CRUSHED STONE BEDDING OR APPROVED EQUAL SHALL BE PROVIDED BY THE CONTRACTOR WHEN ROCK IS ENCOUNTERED IN TRENCHES. THERE SHALL BE NO ADDITIONAL PAY ITEM OF THE CRUSHED STONE BEDDING.
- IF REQUIRED DUE TO CONSTRUCTION, POWER POLES TO BE BRACED OR RELOCATED AT CONTRACTORS EXPENSE.

PRELIMINARY
NOT FOR CONSTRUCTION

THIS DOCUMENT IS ISSUED FOR THE PURPOSE OF SCHEMATIC REVIEW ONLY AND IS NOT INTENDING FOR PERMITTING, BIDDING, OR CONSTRUCTION PURPOSES.

PLANS PREPARED UNDER THE DIRECT SUPERVISION OF STEVEN A. MARKUSSEN, P.E. TEXAS REGISTRATION NO. 70090 DATE: 01/21/2007

ISSUED FOR PRELIMINARY PRICING PURPOSES ONLY
(SUBJECT TO REVISION PRIOR TO CONSTRUCTION)

THESE DOCUMENTS HAVE BEEN PREPARED BY THE ENGINEER WITH THE INTENT OF COMPLYING WITH ALL CITY STANDARD REQUIREMENTS. THESE DOCUMENTS HAVE NOT BEEN APPROVED AND RELEASED FOR CONSTRUCTION BY THE CITY AS OF THIS DATE AND, THEREFORE, REVISIONS MAY BE REQUIRED PRIOR TO CONSTRUCTION. BY ANY USE OF THESE DOCUMENTS, THE USER AFFIRMS THEIR UNDERSTANDING OF THE PRELIMINARY STATUS OF THE PLANS AND THE POTENTIAL FOR REVISION PRIOR TO ANY CONSTRUCTION.

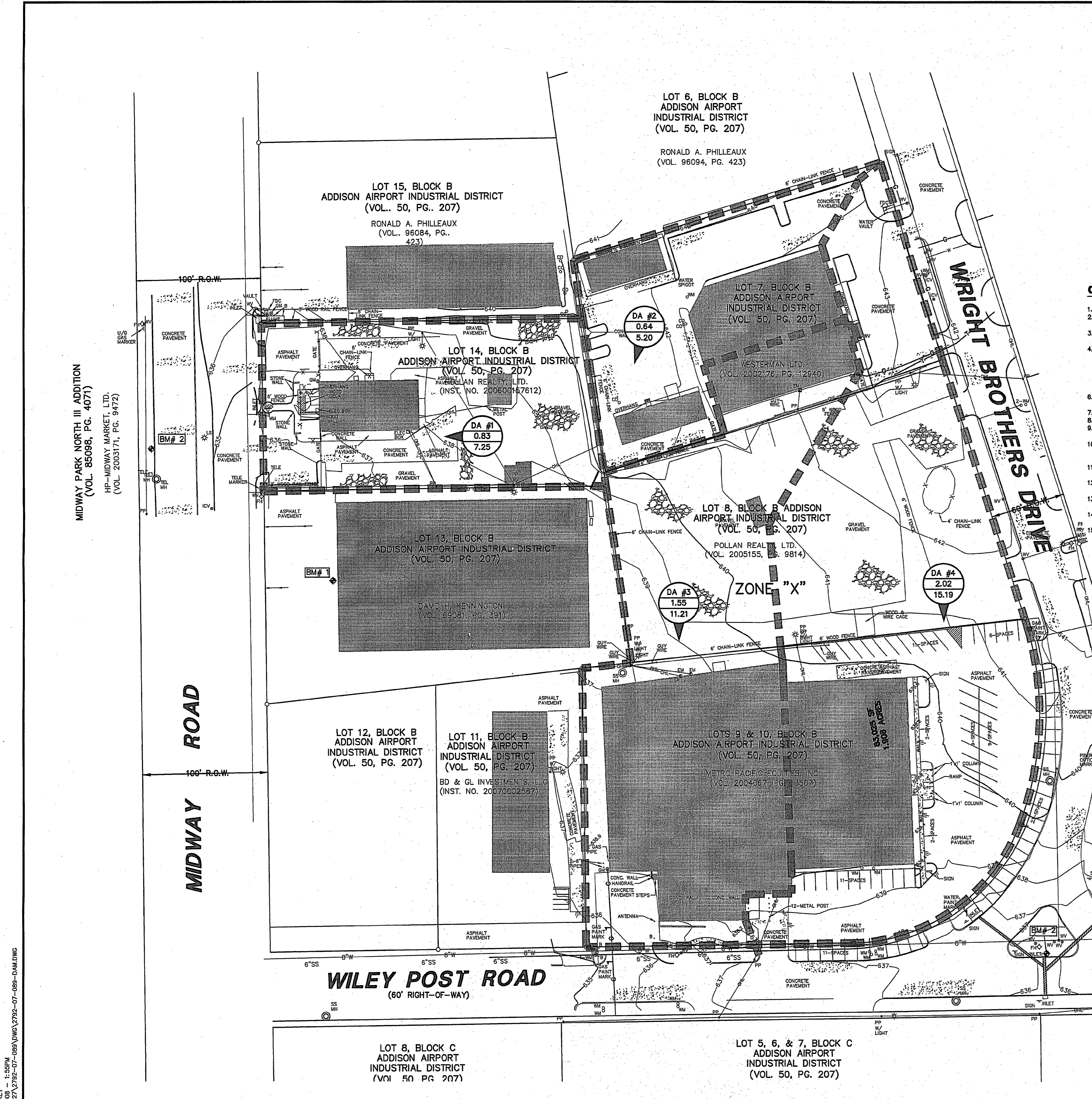
NO.	DATE	REVISION

Pacheco Koch Consulting Engineers
8350 N. CENTRAL EXPWY., SUITE 1000 DALLAS, TX. 75208 972.235.3031

EX. DRAINAGE AREA MAP EXHIBIT

JW OPERATING
LOTS 7, 8, 9 & 10, BLOCK B
ADDISON AIRPORT INDUSTRIAL DISTRICT
TOWN OF ADDISON, TEXAS

DESIGN	DRAWN	DATE	SCALE	NOTES	FILE	NO.
SAM	CPM	JAN 2008	1"=40'			C6.0



CAD/CHECKER: 01/21/2008 - 1:55PM
 M. DING - 271-7392-07-089-DWG
 D.M.D.M.G.

JW OPERATING

2007-02