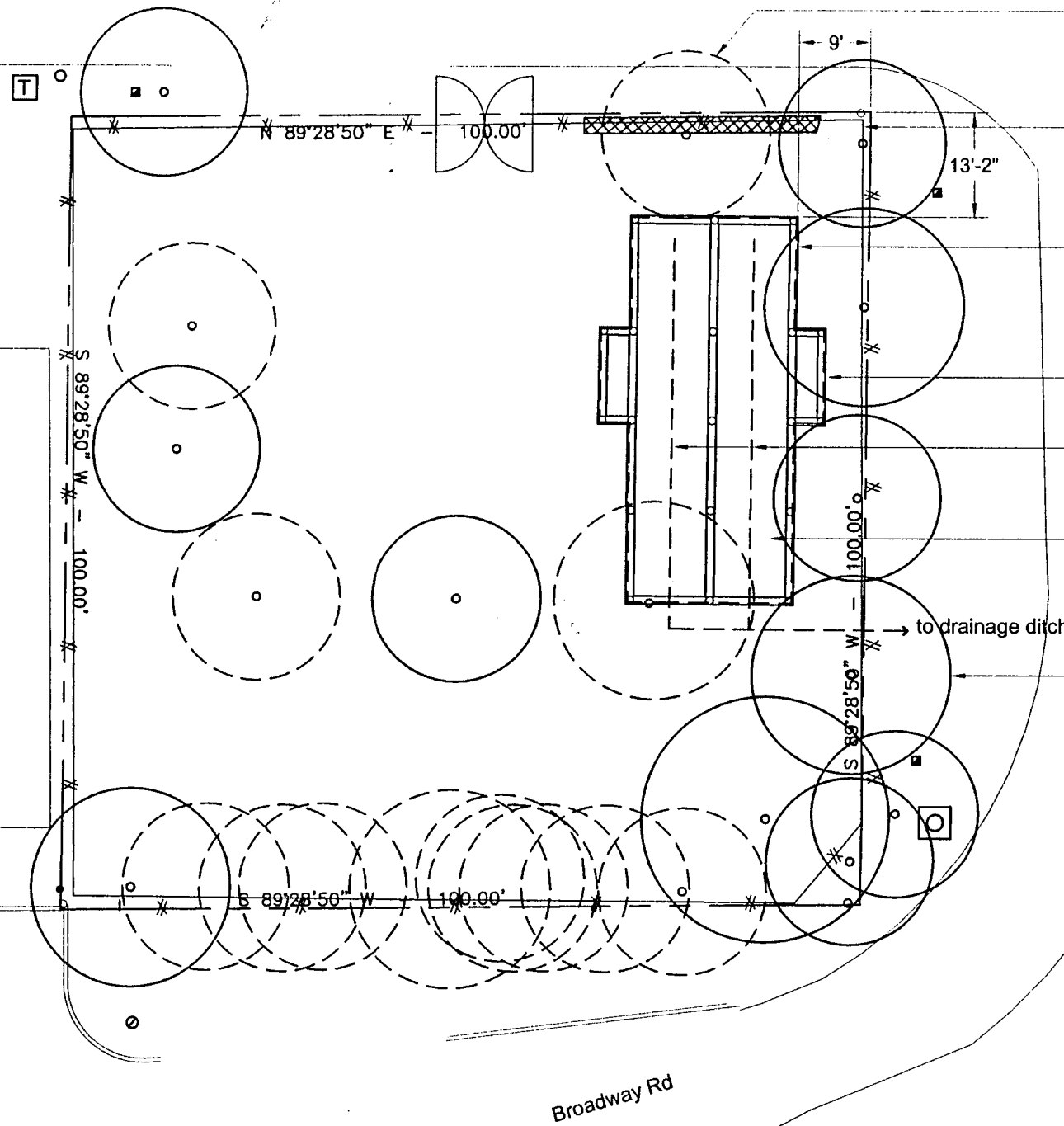


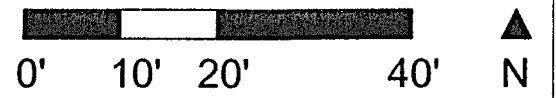
GENERAL NOTES

1. The General Contractor (G.C.) shall perform all work as described in good faith and in compliance with all applicable codes and ordinances.
2. Carefully review the drawings and verify all dimensioning. Any errors, inconsistencies, omissions or ambiguities between the drawings and the site construction conditions shall be reported to the architect prior to relocation.
3. Verify alignments and final location of the building w/ Architect prior to relocation.
4. Verify new location to not encroach building setbacks.
5. Do not scale drawings. Contact the Architect: Gary Cunningham at 214 915 0900 for supplemental dimensional information.
6. Do not remove anything from site without approval from the Town of Addison.
7. Do not drive on or over drip line of existing trees without approval of Architect on site.
8. Protect trees as directed by Architect on site.
9. Verify location of all existing underground and overhead utilities.



- Tree to be removed by others, typ.
- Verify location of property line and corner pins
- Proposed location of Train Depot parallel to east property line, foundation by G.C., building relocation by others
- C.I.P. concrete grade beam on piers, ref. foundation plan
- 4" corrugated sleeved poly drain pipe in gravel-filled trench, under ground to storm ditch, verify elevations
- finish grade in crawl space to slope down 1" to drain tile trench and cover crawl space floor with 4" deep gravel over filter fabric
- Existing tree to remain, typ., see general notes

**ADDISON - TRAIN DEPOT
Relocation Site Plan
Cunningham Architects**



01 Foundation Site Plan
scale: 1"=20'-0"



TOWN OF ADDISON : Train Depot
Block 4 Broadway Street, Addison, TX
Construction Documents

not for
regulatory
approval,
permitting or
construction

cunninghamarchitects
918 Dragon Street, Dallas, Texas 75207 - v.214.915.0900 - f.214.915.0901

Revisions:	Date:
Pre-Bid	3.20.07
FND BID	4.08.07
FND BID	6.06.07

Foundation
Site Plan
S0.01