

CONSTRUCTION DOCUMENTS FOR ADDISON AIRPORT ACCESS ROAD REALIGNMENT

2007-08

ADDISON AIRPORT ACCESS ROAD REALIGNMENT

CITY COUNCIL
JOE CHOW, MAYOR

GREGORY S. HIRSCH,
MAYOR PRO TEMPORE

DENNIS KRAFT

ROGER S. MELLOW

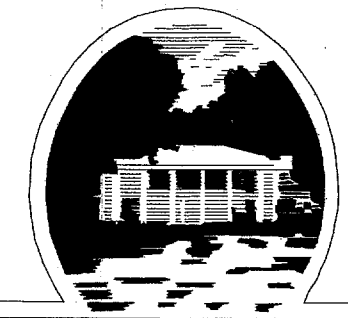
TOM BRAUN,
DEPUTY MAYOR PRO TEMPORE

TODD MEIER

JIMMY NIEMANN

CITY MANAGER
RON WHITEHEAD

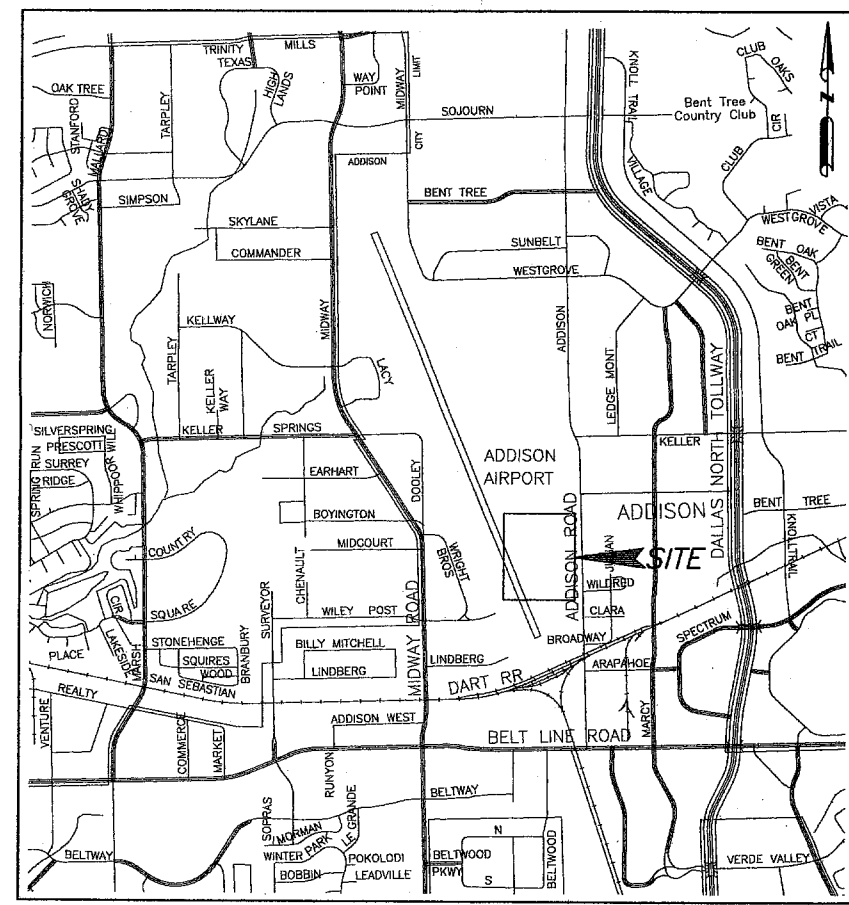
DIRECTOR OF PUBLIC WORKS
NANCY STRAUB CLINE, P.E.



T O W N O F
ADDISON

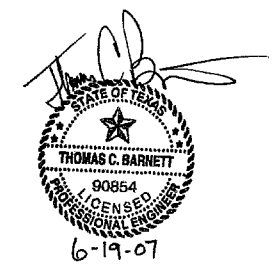
PUBLIC WORKS NO. 2007-004

| SHEET NO. | INDEX OF SHEETS |
|-----------|---|
| C1 | COVER SHEET / LOCATION MAP |
| C2 | GENERAL NOTES |
| C3 | PAVING PLAN |
| C4 | EROSION & SEDIMENTATION CONTROL PLAN |
| C5 | EROSION & SEDIMENTATION CONTROL DETAILS |
| C6 | PAVING DETAILS |



LOCATION MAP
NOT TO SCALE

ENGINEER
TOWN OF ADDISON
DEPARTMENT OF PUBLIC WORKS
16801 WESTGROVE DRIVE
ADDISON, TEXAS 75001
(972) 450-2871
CONTACT: CLAY BARNETT, P.E.



JUNE, 2007

R:\PublicWorks\Projects\Airport\Access Road Realignment\Plans\Town\2007-04-20.pwd Tue Jun 19 16:03:28 2007