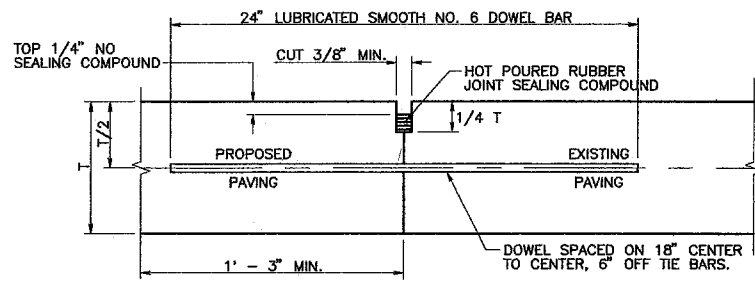
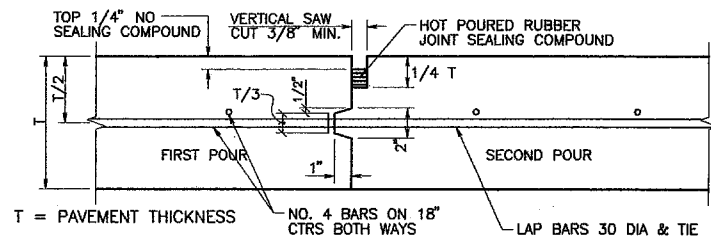


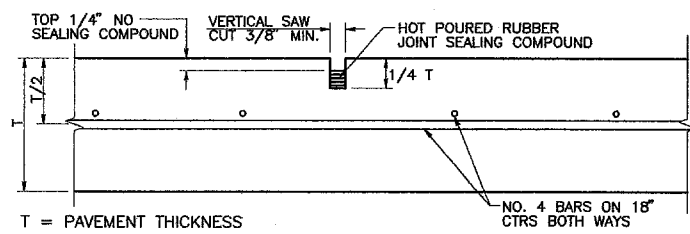
**TRANSVERSE EXPANSION JOINT**  
(SPACED 600 FT. MAXIMUM, LOCATE AT INTERSECTIONS)  
NTS



**LONGITUDINAL BUTT JOINT**  
NTS

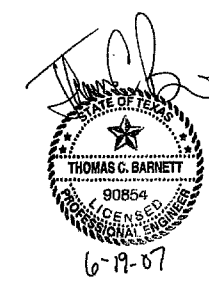


**CONSTRUCTION JOINT FOR PAVEMENT**  
(TRANSVERSE AND LONGITUDINAL JOINTS)  
NTS



**SAWED DUMMY JOINT**  
NTS

- PAVING GENERAL NOTES:**
- REPAIR AREAS SHALL BE LEVELED TO MATCH EXISTING GRADE OF ADJACENT CONCRETE OR ASPHALT PAVEMENT.
  - IF ADDITIONAL FILL MATERIAL IS NEEDED, FLEXIBLE BASE MEETING THE REQUIREMENTS OF NCTCOG STANDARD SPECIFICATIONS 301.5 SHALL BE USED.
  - REMOVED PAVEMENT SHALL BE LEGALLY DISPOSED OF BY THE CONTRACTOR.
  - BAR CHAIRS OR AN APPROVED DEVICE SHALL BE FURNISHED.



NO.	DATE	REVISION DESCRIPTION				
<b>PAVING DETAILS</b>						
ADDISON AIRPORT ACCESS ROAD REALIGNMENT						
TOWN OF ADDISON DALLAS COUNTY, TEXAS						
<b>TOWN OF ADDISON</b> PUBLIC WORKS DEPARTMENT						
DESIGN	DRAWN	DATE	SCALE	NOTES	JOB NUMBER	SHEET
TCB	TCB	06/19/2007	NTS	TCB		<b>C6</b>

R:\Publicworks\Projects\Airport\Access Road Realignment\Plans\Drawings 2007-04-20.dwg Tue Jun 19 16:05:07 2007