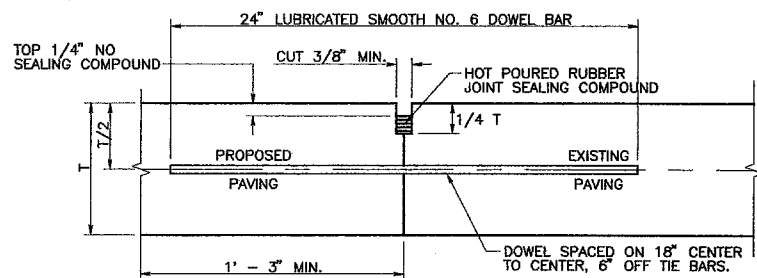


NOTE:
DOWELS AND REINFORCING BARS SHALL BE SUPPORTED BY AN APPROVED DEVICE & MUST BE TIED OR CHAIRED ON EACH SIDE.

TRANSVERSE EXPANSION JOINT
(SPACED 600 FT. MAXIMUM, LOCATE AT INTERSECTIONS)
NTS

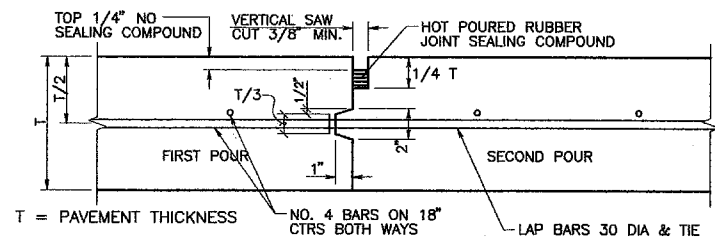


T = PAVEMENT THICKNESS

NOTES:

1. NO. 5 SMOOTH DOWEL BAR MAY BE USED IN 6 INCH PAVEMENT.
2. LONGITUDINAL BUTT CONSTRUCTION MAY BE UTILIZED IN PLACE OF LONGITUDINAL HINGED (KEYWAY) JOINT AT CONTRACTORS OPTION.
3. DOWEL BARS SHALL BE DRILLED INTO PAVEMENT HORIZONTALLY BY USE OF A MECHANICAL RIG. DRILLING BY HAND IS NOT ACCEPTABLE. PUSHING DOWEL BARS INTO GREEN CONCRETE NOT ACCEPTABLE.

LONGITUDINAL BUTT JOINT
NTS



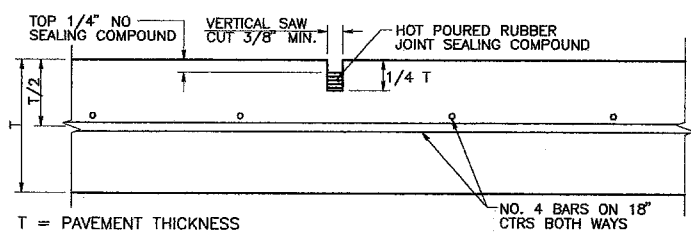
T = PAVEMENT THICKNESS

NO. 4 BARS ON 18" CTRS BOTH WAYS

LAP BARS 30 DIA & TIE

NOTE: CONTRACTOR SHALL PROTECT KEYWAY PRIOR TO SECOND POUR. IF LONGITUDINAL KEYWAY IS DAMAGED, CONTRACTOR SHALL REPAIR WITH THE USE OF LONGITUDINAL BUTT JOINT. DRILL AND GROUT DOWELS INTO FIRST POUR.

CONSTRUCTION JOINT FOR PAVEMENT
(TRANSVERSE AND LONGITUDINAL JOINTS)
NTS



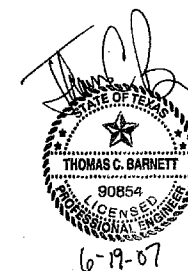
T = PAVEMENT THICKNESS

NO. 4 BARS ON 18" CTRS BOTH WAYS


SAWED DUMMY JOINT
NTS

PAVING GENERAL NOTES:

1. REPAIR AREAS SHALL BE LEVELED TO MATCH EXISTING GRADE OF ADJACENT CONCRETE OR ASPHALT PAVEMENT.
2. IF ADDITIONAL FILL MATERIAL IS NEEDED, FLEXIBLE BASE MEETING THE REQUIREMENTS OF NCTCOG STANDARD SPECIFICATIONS 301.5 SHALL BE USED.
3. REMOVED PAVEMENT SHALL BE LEGALLY DISPOSED OF BY THE CONTRACTOR.
4. BAR CHAIRS OR AN APPROVED DEVICE SHALL BE FURNISHED.



6-19-07

NO.	DATE	REVISION DESCRIPTION				
PAVING DETAILS						
ADDISON AIRPORT ACCESS ROAD REALIGNMENT						
TOWN OF ADDISON DALLAS COUNTY, TEXAS						
 TOWN OF ADDISON PUBLIC WORKS DEPARTMENT						
DESIGN	DRAWN	DATE	SCALE	NOTES	JOB NUMBER	SHEET
TCB	TCB	06/19/2007	NTS	TCB		C6