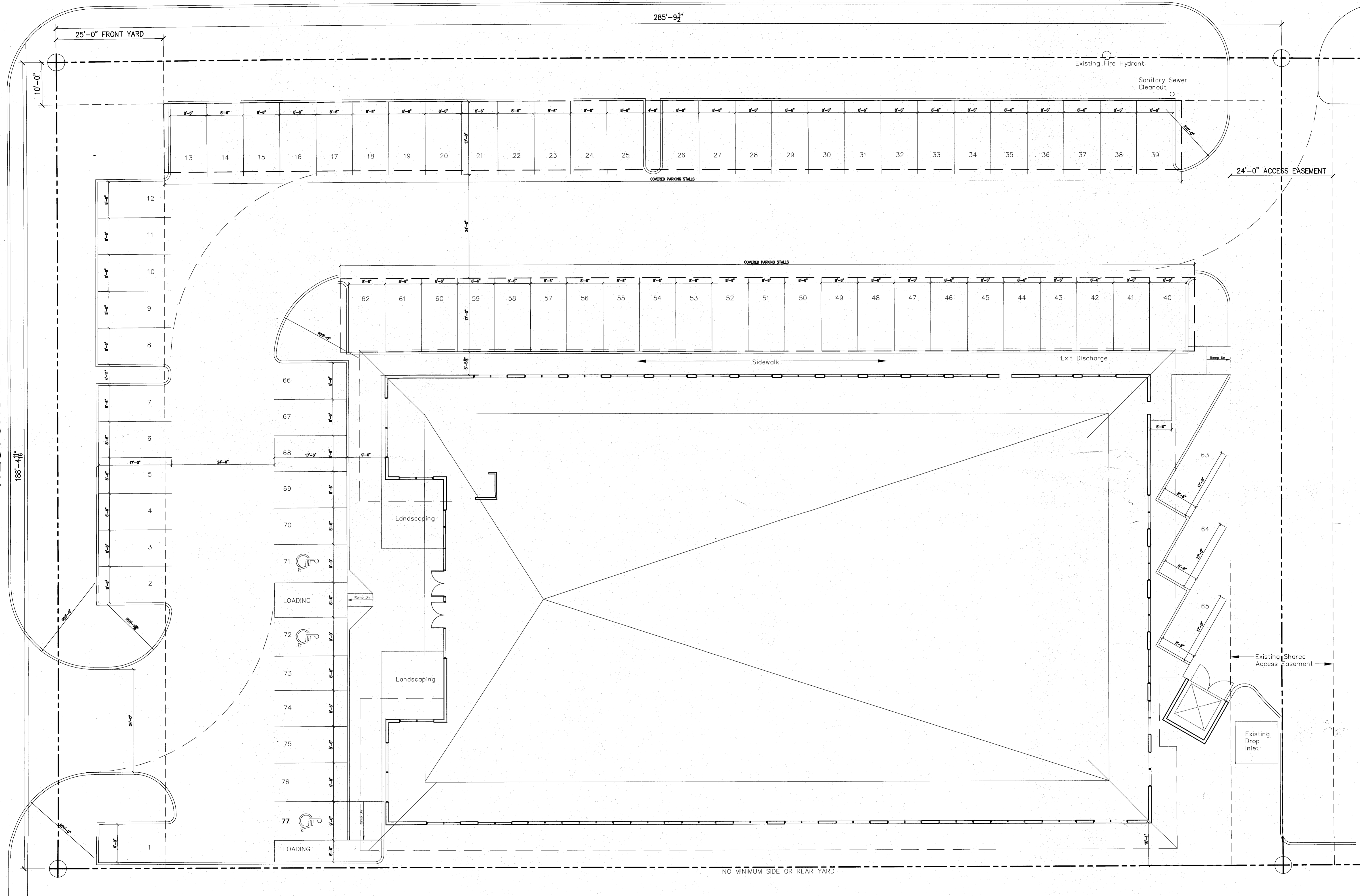
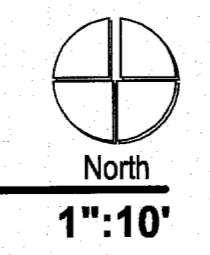


AIRBORN DRIVE

WESTGROVE DRIVE



Proposed Site Plan



2007-009

Copyright

2007 by Russell Associates, LLC
ALL RIGHTS RESERVED.
THE ARRANGEMENTS DEPICTED
HEREIN ARE THE SOLE PROPERTY
OF RUSSELL ASSOCIATES, LLC, AND
MAY NOT BE REPRODUCED IN ANY
FORM WITHOUT ITS WRITTEN
PERMISSION.
Russell Associates, LLC
824 Brookhurst
Dallas, TX 75218
V 214.629.6792
F 972.661.6172

Registration



NOT FOR CONSTRUCTION
Project

Proposed New Office Building
at
Addison, TX
for
Seneca Investments

Issue Date

25 June 2007

Revisions

- 1 Issued for P&I Review
25 June 2007
- 2
- 3
- 4

Sheet Name

Sheet Number

21