

Maury M. Miller



Seneca Properties

New Office Building
 Addison, Texas

- Pre-design Service
- Schematic Design
- Design Development
- Permit Submittal
- Bid Documents
- Construction Plans
- Supplemental Plans

Landscape Plan

L1

25 June 2007

LANDSCAPE TABULATIONS FOR CITY OF ADDISON

SITE LANDSCAPE REQUIREMENTS:

20% REQUIRED / 21% PROVIDED

WESTGROVE DRIVE: 165 LF FRONTAGE

20' LANDSCAPE BUFFER REQUIRED / 20' LANDSCAPE BUFFER PROVIDED

STREET TREES: 6 REQUIRED / 6 PROVIDED
 SHRUBS: 56 REQUIRED / 64 PROVIDED

INTERIOR LANDSCAPE PARKING AREA REQUIREMENTS:

35,000 SQ. FT. - Total parking area

1,756 SF - REQUIRED (28%) / 1,835 SF PROVIDED

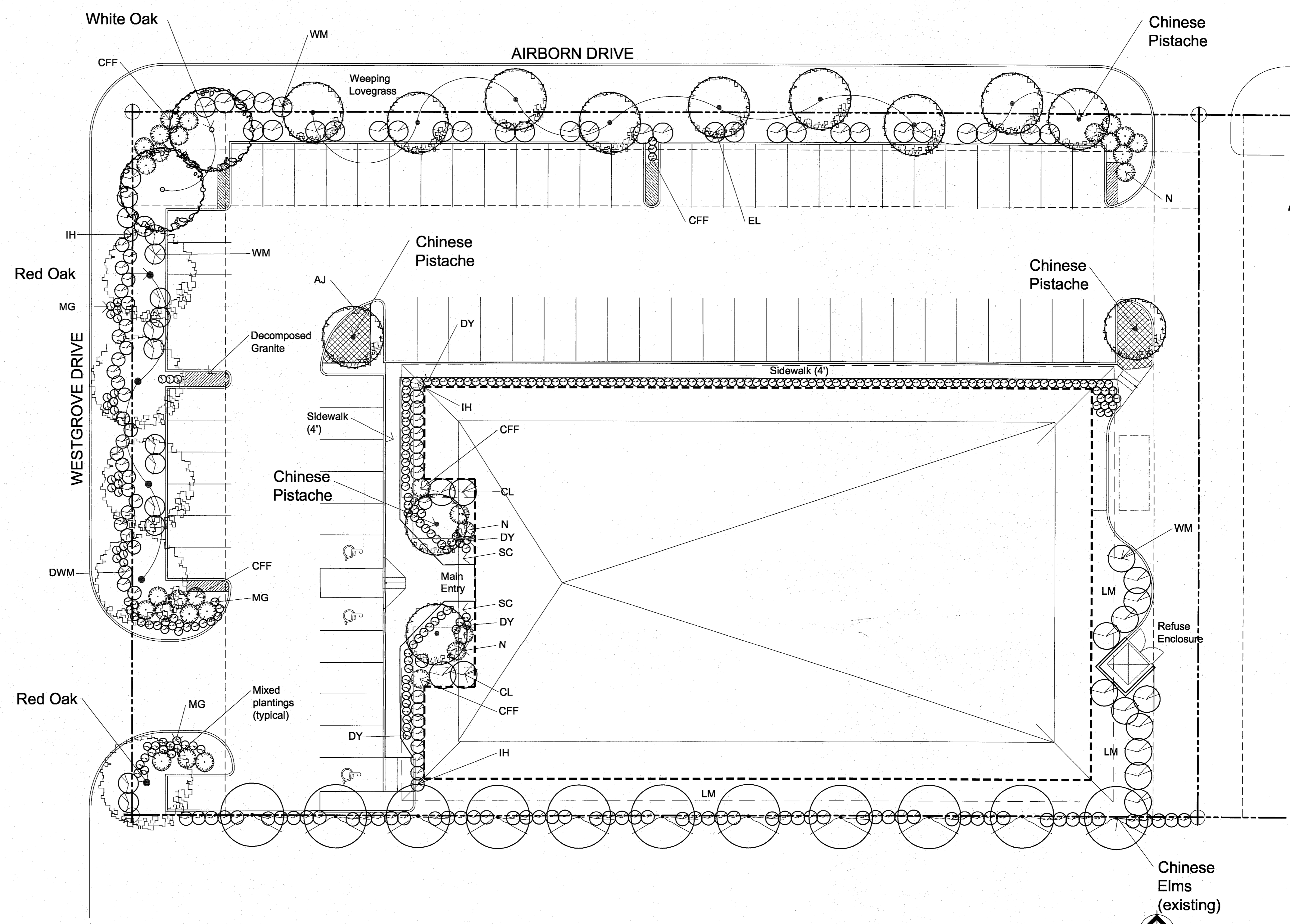
LARGE SHADE TREES - PARKING

1 TREE / 10 SPACES

8 TREES REQUIRED / 11 PROVIDED

PLANT MATERIAL LIST:

| Abbrev. | Common Name | Scientific Name | Height | Form |
|----------------------------|--|---|----------------------------|----------------------|
| | | | minimum (planted) / mature | |
| LARGE TREES: | | | | |
| 5" caliper | | | | |
| MO | "Mexican White" Oak | <i>Quercus polymorpha</i> | 12-14 ft / 25-40 ft | Upright |
| RO | Red Oak | <i>Quercus shumardi</i> | 12-14 ft / 25-40 ft | Upright |
| MEDIUM TREES: | | | | |
| 45 gal | | | | |
| CP | Chinese Pistache | <i>Pistacia chinensis</i> | 9-11 ft / 20-25 ft | Rounded crown |
| ORNAMENTAL TREES: | | | | |
| 30 gal | | | | |
| LGM | "Little Gem" Magnolia | <i>Magnolia grandiflora</i> "Little Gem" | 8-10 ft / 15-25 ft | |
| YH | Yaupon Holly | <i>Ilex vomitoria</i> | 7-9 ft / 15-25 ft | |
| CL | "Bright N Tight" Cherry Laurel | <i>Prunus caroliniana</i> "app" | 7-9 ft / 15-25 ft | Upright, symmetrical |
| LARGE SHRUBS: | | | | |
| 1 gal & 10 gal | | | | |
| NR6 | Nellie R. Stevens Holly | <i>Ilex "Nellie R. Stevens"</i> | | |
| EL | Thorny Eleagnus | <i>Eleagnus pungens</i> | 4-5 ft / 10-15 ft | |
| WM | Wax Myrtle | <i>Myrica caribaea</i> | 4-5 ft / 15-25 ft | |
| MEDIUM SHRUBS: | | | | |
| 2 gal & 1 gal | | | | |
| AB | Abelia "Edward Goucher" | <i>Abelia grandiflora</i> "Edward Goucher" | | |
| CFF | Chinese Fringe Flower Purpleleaf Plum Delight | <i>Loropetalum chinense</i> var. "victorum" | | |
| N | Common Nandina | <i>Nandina domestica</i> | | |
| DWM | "Dwarf" Wax Myrtle | <i>Myrica caribaea</i> "pumilla" | | |
| IH | Indian Hawthorne | <i>Raphiolepis indica</i> "Enchantress" | | |
| SMALL SHRUBS: | | | | |
| 2 gal & 5 gal | | | | |
| DY | Dwarf Yaupon | <i>Ilex vomitoria</i> nana | | |
| ORNAMENTAL GRASSES: | | | | |
| 1 gal & 3 gal | | | | |
| H-FG | "Hamlin" Fountain Grass | <i>Pennisetum alopecuroides</i> "Hamlin" | | |
| MG | Maiden Grass | <i>Miscanthus sinensis</i> "Gracillimus" | | |
| HF | House Holly Fern | <i>Cytosium falcatum</i> | | |
| GROUND COVERS: | | | | |
| 1 gal | | | | |
| AJ | Asian Jasmine | <i>Jasminum asiaticum</i> | | |
| LM | Liriope "Big Blue" | <i>Liriope muscari</i> | | |
| SC | Seasonal color | | | |
| TURF GRASSES: | | | | |
| WLG | Weeping Love Grass | <i>Eragrostis curvula</i> | | Hydro - seed |
| CB | Common Bermuda | | | Solid seed |



Landscape Plan

1/16" = 1'-0"

