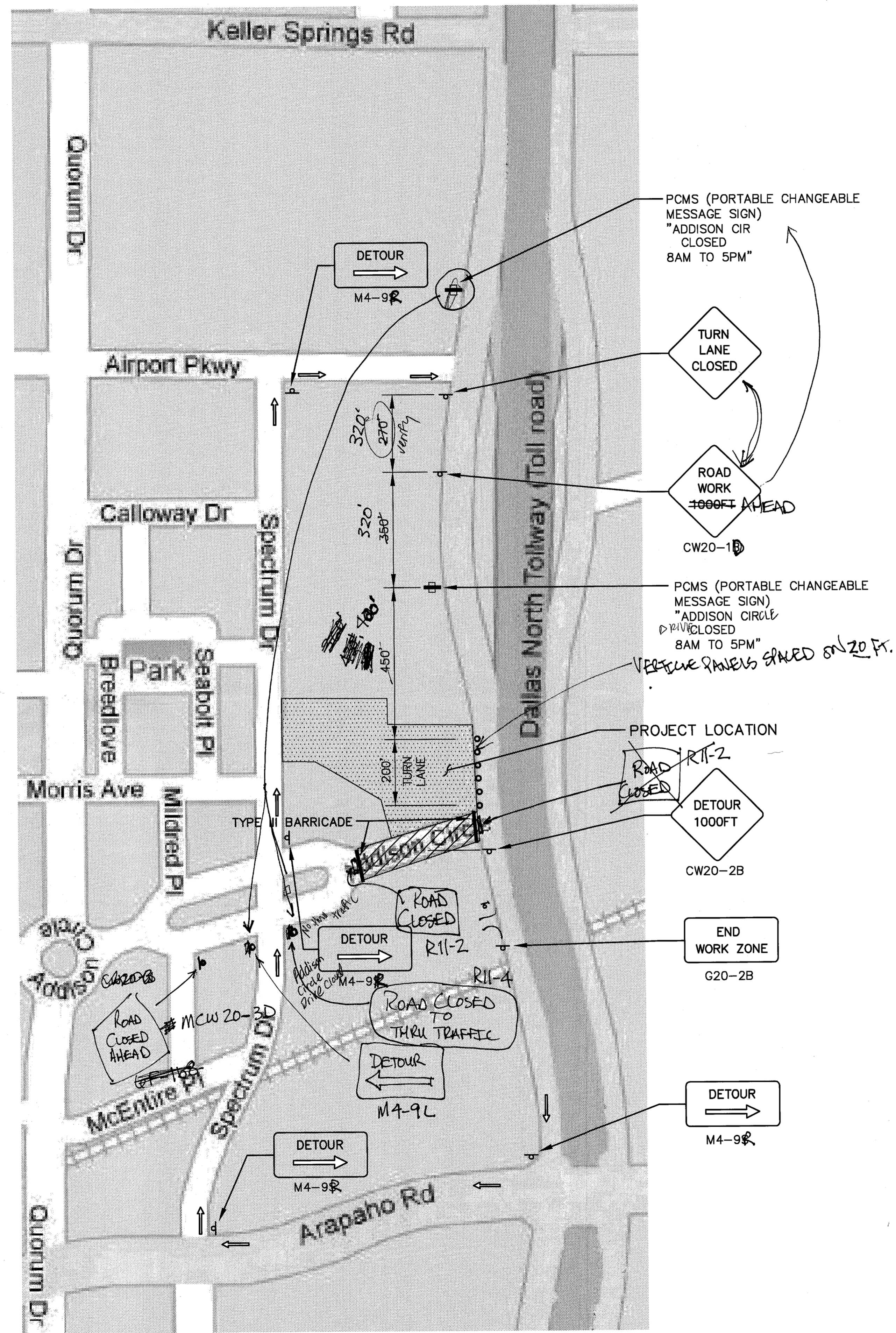


LEGEND

	TRAFFIC FLOW ARROW
	SIGN
	TRAFFIC DRUM
	PCMS (PORTABLE CHANGEABLE MESSAGE SIGN) "RIGHT LANE CLOSED 8AM TO 5PM"
	ROAD CLOSURE



- This work cannot be done during Oktoberfest.
- Not by all businesses + residents affected. Coordinate with Post
- SIGN FOR ENTRANCE + DELIVERIES TO ADDISON CIRCLE OFFICE BUILDING AT THEIR SOUTH ENTRANCE.

PRELIMINARY
 NOT FOR CONSTRUCTION
 THIS DOCUMENT IS ISSUED FOR THE PURPOSE OF SCHEMATIC REVIEW ONLY AND IS NOT INTENDED FOR PERMITTING, BIDDING, OR CONSTRUCTION PURPOSES.
 PLANS PREPARED UNDER THE DIRECT SUPERVISION OF JAMES A. KOCH, JR., P.E. TEXAS REGISTRATION NO. 62218
 DATE: 08/19/2008

ISSUED FOR PRELIMINARY PRICING PURPOSES ONLY
 (SUBJECT TO REVISION PRIOR TO CONSTRUCTION)
 THESE DOCUMENTS HAVE BEEN PREPARED BY THE ENGINEER WITH THE INTENT OF COMPLYING WITH ALL CITY STANDARD REQUIREMENTS. THESE DOCUMENTS HAVE NOT BEEN APPROVED AND RELEASED FOR CONSTRUCTION BY THE CITY AS OF THIS DATE, AND, THEREFORE, REVISIONS MAY BE REQUIRED PRIOR TO CONSTRUCTION. BY ANY USE OF THESE DOCUMENTS, THE USER AFFIRMS THEIR UNDERSTANDING OF THE PRELIMINARY STATUS OF THE PLANS AND THE POTENTIAL FOR REVISION PRIOR TO ANY CONSTRUCTION.

NO.	DATE	REVISION
▲	08/08/2008	SITE PLAN UPDATE/ONCOR COMMENTS
▲	06/10/2008	GARAGE FINISHED FLOOR ELEV/ELEC DUCT BANK ADDITION
▲	03/18/2008	FRANCHISE UTILITY LINE CONFLICT REVISION
▲	01/23/2008	UTILITY LINE CONFLICT/CITY COMMENTS REVISION
▲	01/08/2008	STORM LINE FLOWLINE REVISIONS

Pacheco Koch Consulting Engineers
 8350 N. CENTRAL EXPWY. SUITE 1000 DALLAS, TX. 75208 972.236.3031

TRAFFIC CONTROL PLAN
TWO ADDISON CIRCLE
3.371 ACRES
15600 DALLAS PARKWAY
TOWN OF ADDISON, DALLAS COUNTY TEXAS

DESIGN	DRAWN	DATE	SCALE	NOTES	FILE	NO.
JAK/KFW	KLH	AUG 2008	NTS			C5.3