



**Kimley-Horn
and Associates, Inc.**
2007 . ©

12700 PARK CENTRAL DRIVE
SUITE 1800
DALLAS, TEXAS 75201
PHONE: 972.770.1300
FAX: 972.239.3820

This document, together with the concepts and designs presented herein, as an instrument of service, is intended only for the specific purpose and client for which it was prepared. Reuse of any and improper reliance on this document without written authorization and adaptation by Kimley-Horn and Associates, Inc. shall be without liability to Kimley-Horn and Associates, Inc.

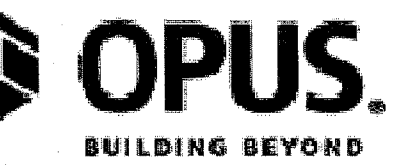
SEALS

PRELIMINARY

FOR REVIEW ONLY
Not for construction or permit purposes.



Engineer: J. BLAKE HODGE
P.E. No. 87742 Date: 08/27/2007



**Two Addison
Circle
Parking Structure**
Addison, Texas

PRELIMINARY DRAWINGS
DO NOT USE FOR CONSTRUCTION

CLIENT PROJECT INFO

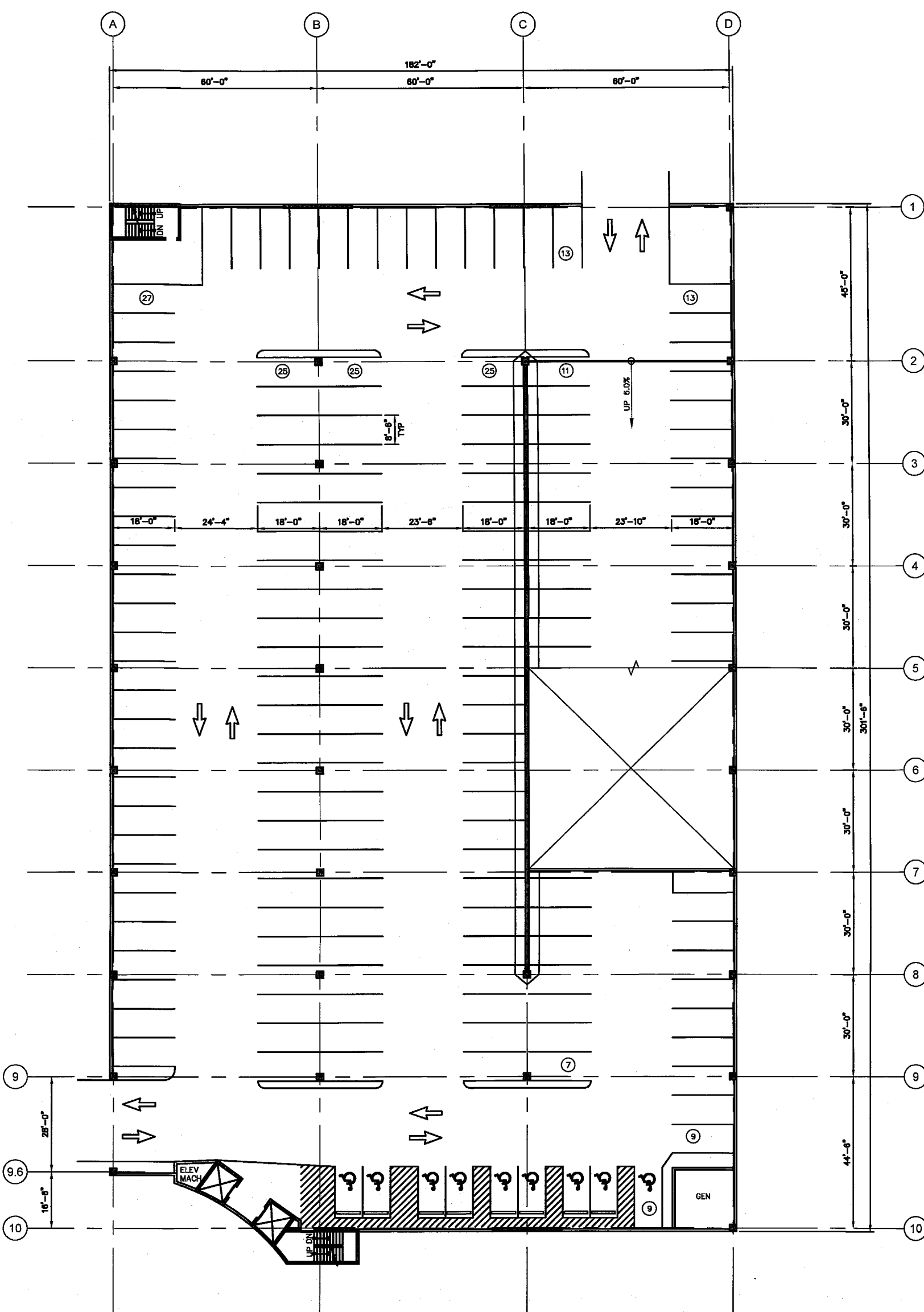
NO.	DATE	DRAWING ISSUE DESCRIPTION
-	08/22/2007	SCHEMATIC PRICING

DESIGNED BY: JBH
DRAWN BY: RS
CHECKED BY: APC
SCALE: AS NOTED
DATE: SEPTEMBER 8, 2007
PROJECT NO.: TBD
FILENAME: TR100.dwg

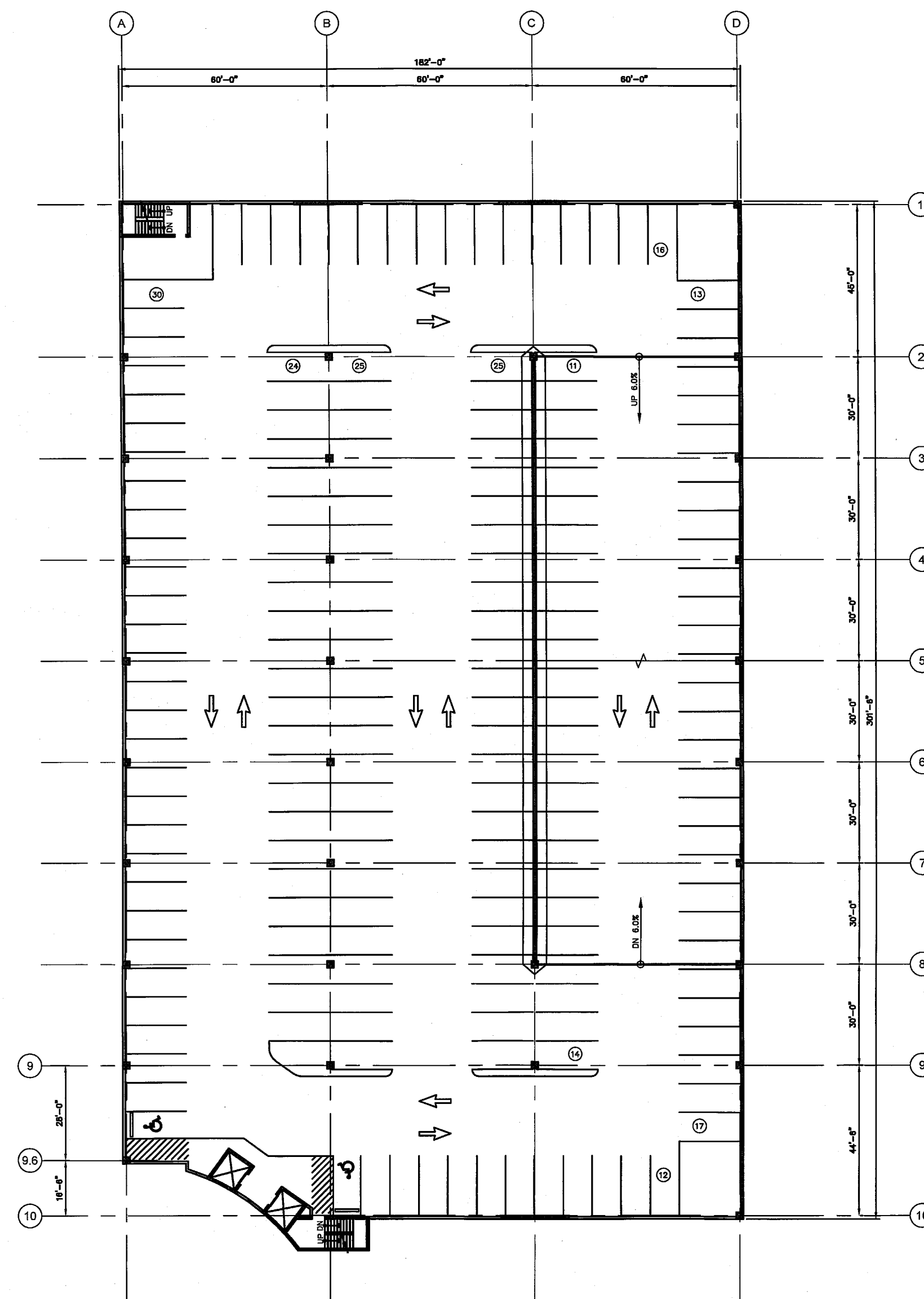
**STRIPING PLAN
OPTION A**

SCHEMATIC DOCUMENTS

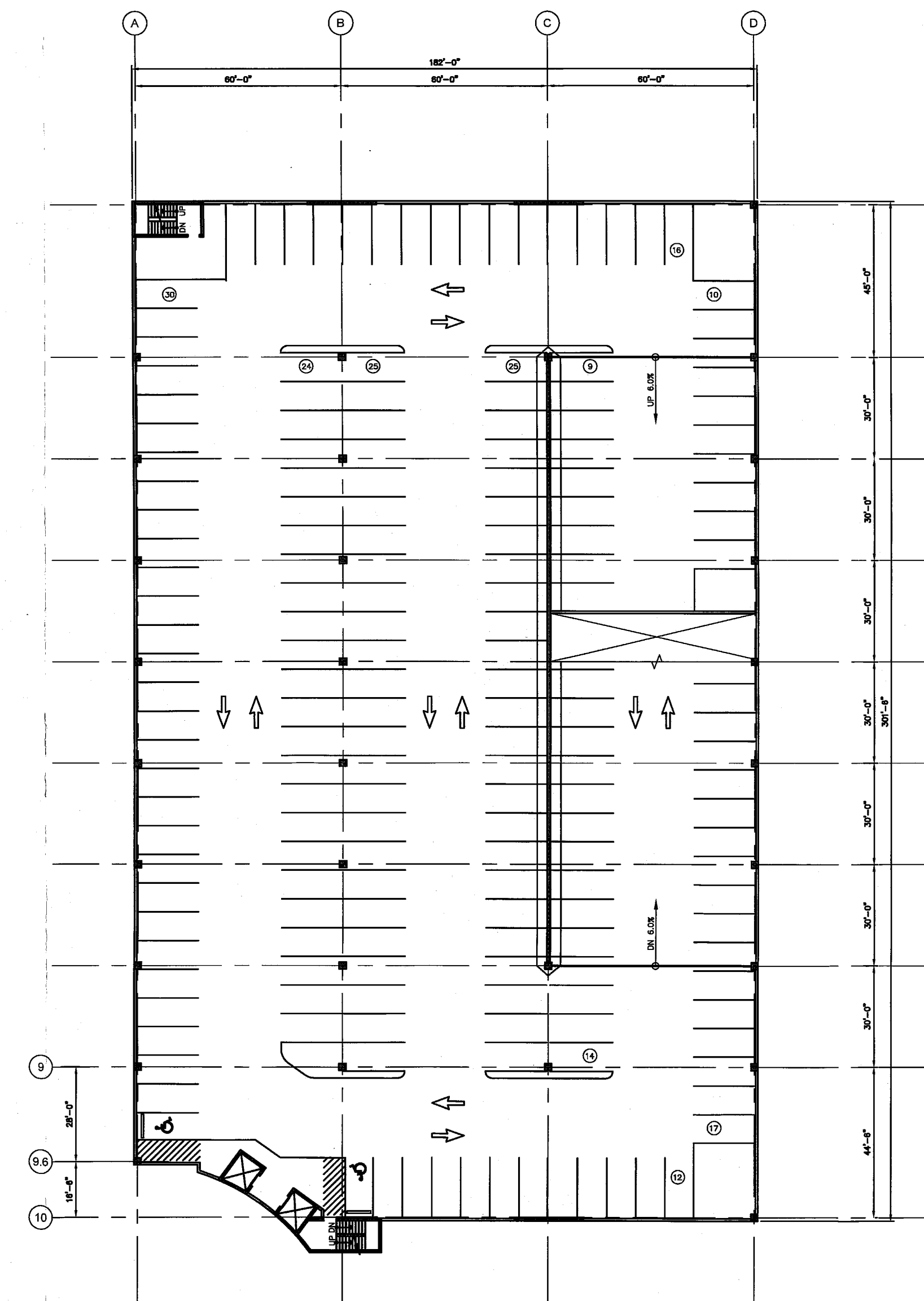
TR100



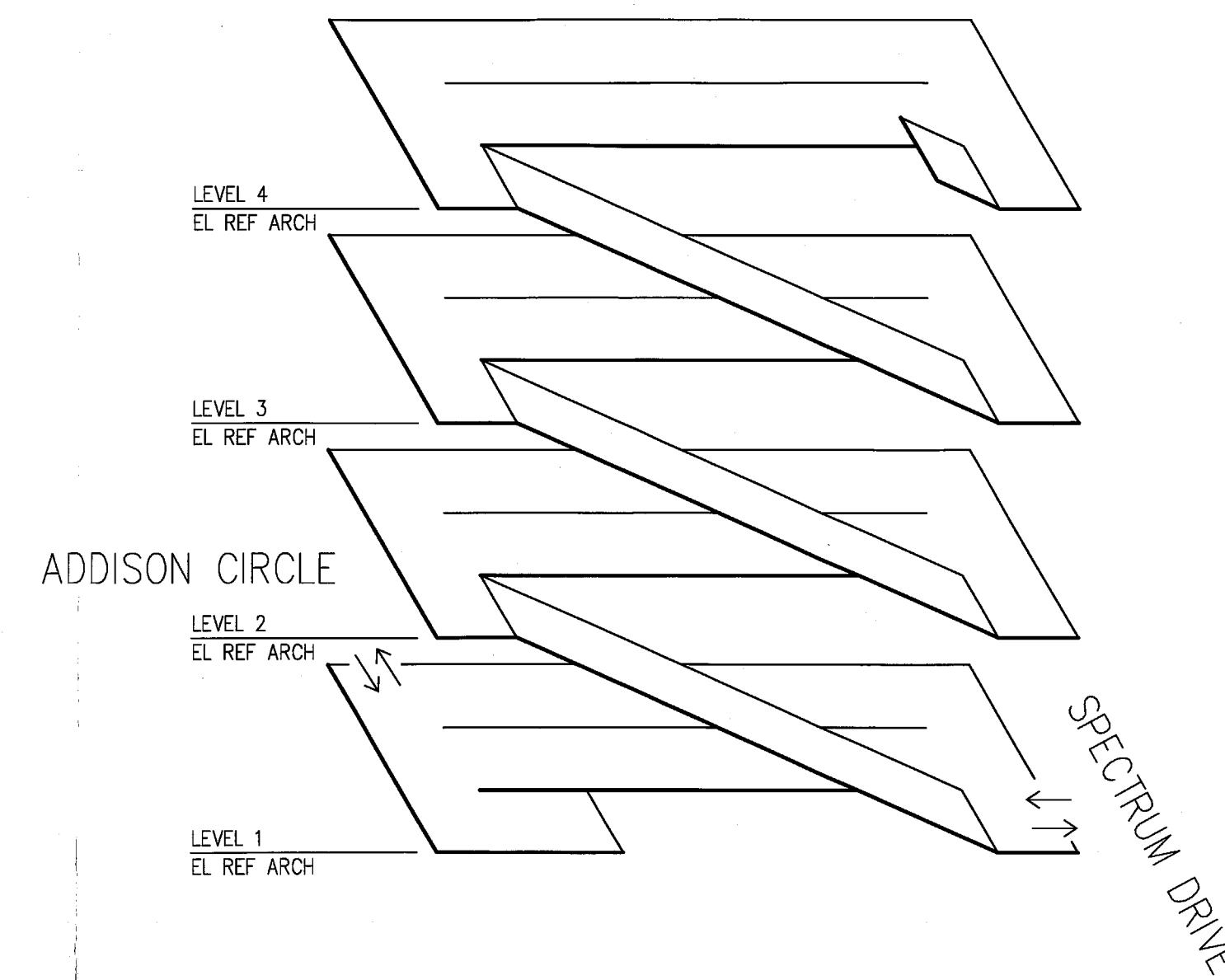
1 STRIPING PLAN - LEVEL 1
TR100 SCALE: 1/32" = 1'-0" NORTH



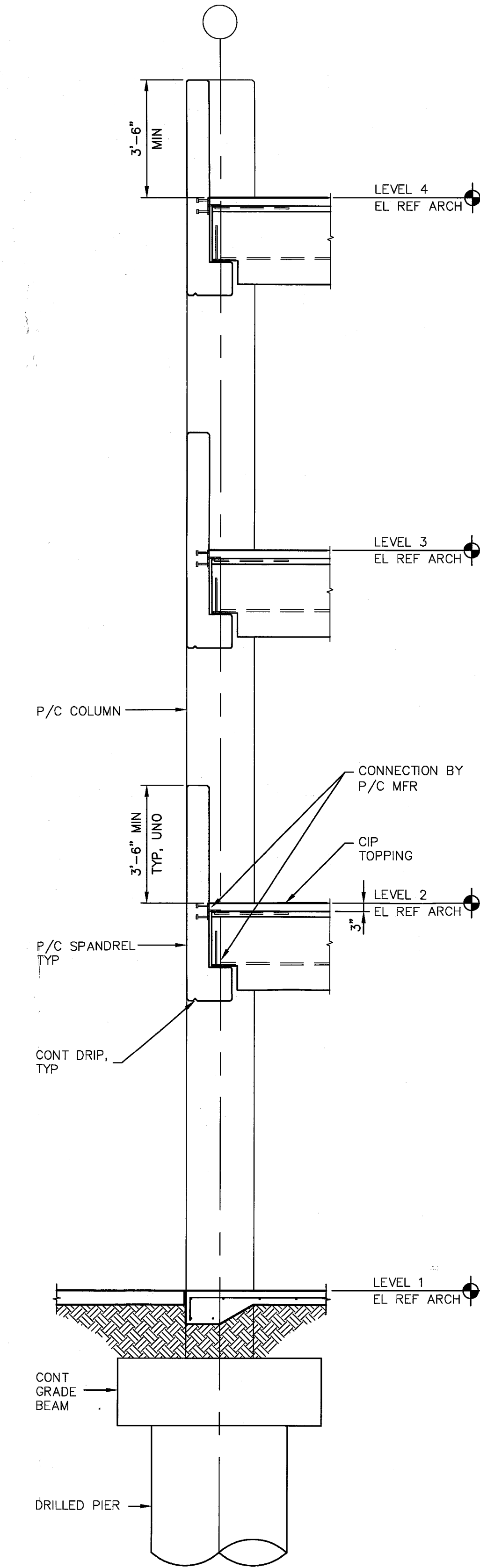
2 STRIPING PLAN - LEVEL 2 & 3
TR100 SCALE: 1/32" = 1'-0" NORTH



3 STRIPING PLAN - LEVEL 4
TR100 SCALE: 1/32" = 1'-0" NORTH



4 ISOMETRIC - OPTION A
TR100 SCALE: NTS



5 WALL SECTION
TR100 SCALE: 3/8" = 1'-0"

PARKING SPACE TABULATION CHART - 4 LEVEL

LEVEL	STANDARD	COMPACT	ADA	VAN ADA	TOTAL
SURFACE	15	-	-	-	15
1	155	-	7	2	164
2	185	-	2	-	187
3	185	-	2	-	187
4	180	-	2	-	182
TOTAL	720	-	13	2	735

3.71 CARS PER 1000 RSF (3.71:1000)
0% COMPACT