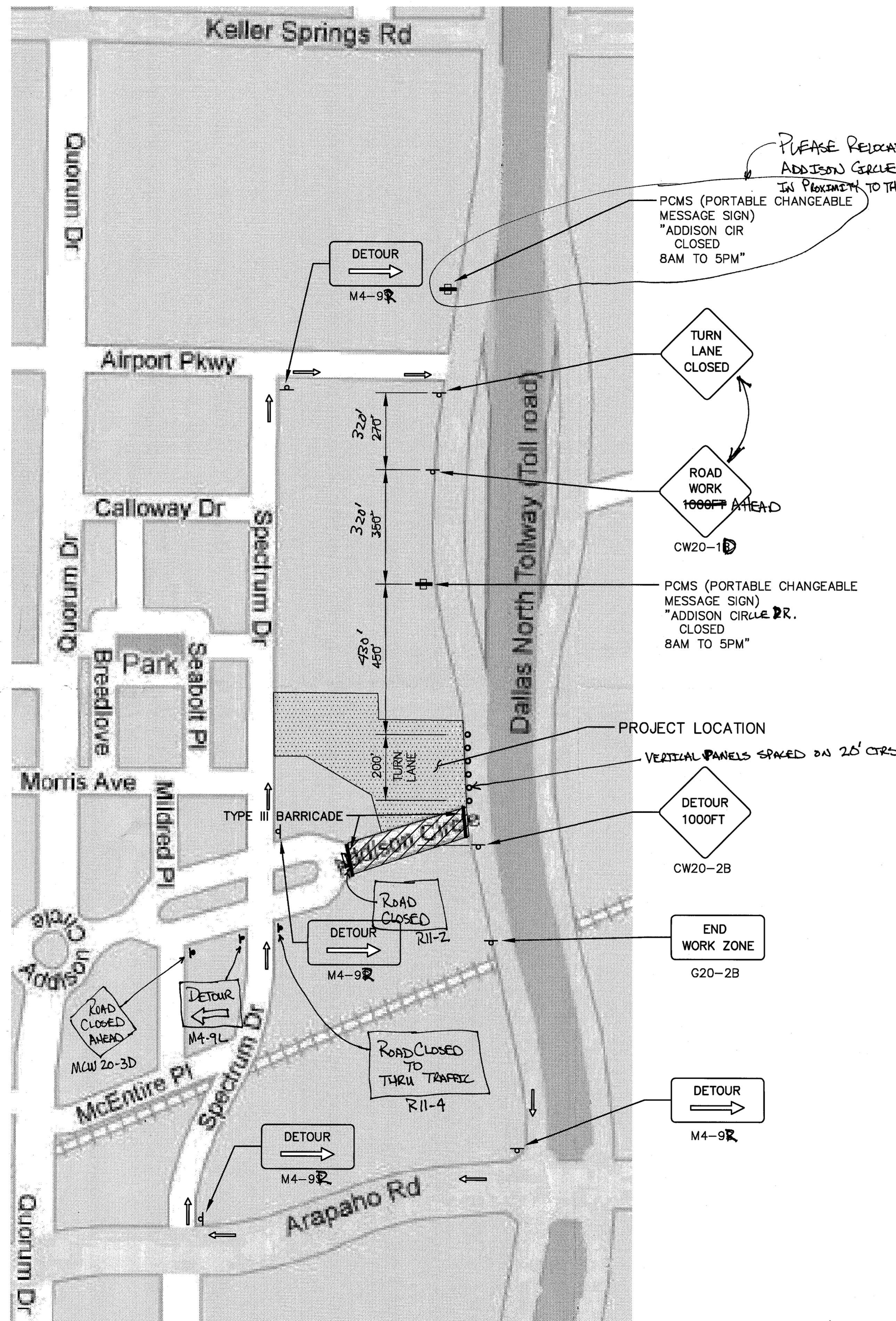


LEGEND

- TRAFFIC FLOW ARROW
- SIGN
- TRAFFIC DRUM
- PCMS (PORTABLE CHANGEABLE MESSAGE SIGN) "RIGHT LANE CLOSED 8AM TO 5PM"
- ROAD CLOSURE



PLEASE RELOCATE TO ADDISON CIRCLE DR. IN PROXIMITY TO THE "ROAD CLOSED TO TRAFFIC" SIGN.

PCMS (PORTABLE CHANGEABLE MESSAGE SIGN) "ADDISON CIR CLOSED 8AM TO 5PM"

TURN LANE CLOSED

ROAD WORK 1000FT AHEAD
CW20-1D

PCMS (PORTABLE CHANGEABLE MESSAGE SIGN) "ADDISON CIRCLE DR. CLOSED 8AM TO 5PM"

PROJECT LOCATION
VERTICAL PANELS SPACED ON 20' CTRS

DETOUR 1000FT
CW20-2B

END WORK ZONE
G20-2B

DETOUR
M4-9R

- PLEASE NOTIFY AND COORDINATE WITH AVENTURA RESIDENTS AND POST PROPERTIES.
- ADD A SIGN FOR ENTRANCE + DELIVERIES TO I ADDISON CIRCLE OFFICE BUILDING AT THEIR SOUTH TOLLWAY ENTRANCE.
- PLEASE WAIT UNTIL AFTER SEPTEMBER 21, 2008 BEFORE PROCEEDING WITH THIS CONSTRUCTION DUE TO OCTOBERFEST.

PRELIMINARY
NOT FOR CONSTRUCTION
THIS DOCUMENT IS ISSUED FOR THE PURPOSE OF SCHEMATIC REVIEW ONLY AND IS NOT INTENDED FOR PERMITTING, BIDDING, OR CONSTRUCTION PURPOSES.
PLANS PREPARED UNDER THE DIRECT SUPERVISION OF JAMES A. KOCH, JR., P.E. TEXAS REGISTRATION NO. 62216
DATE: 08/19/2008

ISSUED FOR PRELIMINARY PRICING PURPOSES ONLY
(SUBJECT TO REVISION PRIOR TO CONSTRUCTION)
THESE DOCUMENTS HAVE BEEN PREPARED BY THE ENGINEER WITH THE INTENT OF COMPLYING WITH ALL CITY STANDARD REQUIREMENTS. THESE DOCUMENTS HAVE NOT BEEN APPROVED AND RELEASED FOR CONSTRUCTION BY THE CITY AS OF THIS DATE AND, THEREFORE, REVISIONS MAY BE REQUIRED PRIOR TO CONSTRUCTION. BY ANY USE OF THESE DOCUMENTS, THE USER AFFIRMS THEIR UNDERSTANDING OF THE PRELIMINARY STATUS OF THE PLANS AND THE POTENTIAL FOR REVISION PRIOR TO ANY CONSTRUCTION.

NO.	DATE	REVISION
1	08/08/2008	SITE PLAN UPDATE/ONCOR COMMENTS
2	08/10/2008	GARAGE FINISHED FLOOR ELEV/ELEC DUCT BANK ADDITION
3	03/18/2008	FRANCHISE UTILITY LINE CONFLICT REVISION
4	01/23/2008	UTILITY LINE CONFLICT/CITY COMMENTS REVISION
5	01/08/2008	STORM LINE FLOWLINE REVISIONS

Pacheco Koch Consulting Engineers
8350 N. CENTRAL EXPWY. SUITE 1000 DALLAS, TX. 75208 972.236.3031

TRAFFIC CONTROL PLAN
TWO ADDISON CIRCLE
3.371 ACRES
15600 DALLAS PARKWAY
TOWN OF ADDISON, DALLAS COUNTY TEXAS

DESIGN	DRAWN	DATE	SCALE	NOTES	FILE	NO.
JAK/KFW	KLH	AUG 2008	NTS			C5.3

KHARKINS 08/20/2008 2:55PM M:\DWG-28\2840-07.156\TRAFFIC.DWG