



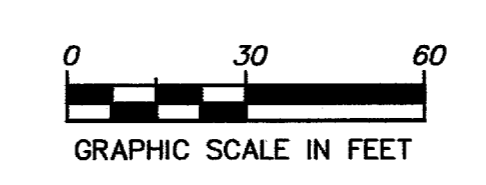
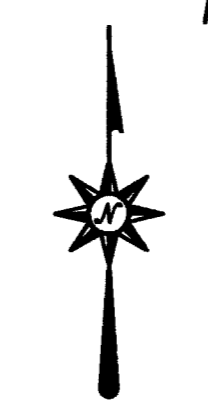
**BENCHMARKS**  
 TEXAS DEPT. OF TRANSPORTATION GPS MONUMENT "COC 6"  
 STATION IS A 2" BRASS DISK SET IN CONCRETE ON TOP OF  
 CURB INLET LOCATED 42' WEST OF THE CL OF MIDWAY RD. &  
 520' SOUTH OF TRINITY MILLS ROAD.  
 LAT. 32°59'09.23628"N, LONG. 96°50'32.20897"W, ELEV. 664.710'

TOWN OF ADDISON GPS MONUMENT "AA-6"  
 STATION IS A 3" ALUMINUM DISK SET IN CONCRETE AT THE  
 SOUTH RADIUS POINT OF A 3' WIDE TRAFFIC ISLAND IN THE  
 TOWN OF ADDISON SERVICE CENTER COMPOUND.  
 LAT. 32°58'51.522"N, LONG. 96°50'23.8757"W, ELEV. 652.26'

**ABBREVIATIONS LEGEND**  
 MIN. FF = MINIMUM FINISHED FLOOR ELEV.  
 RCP = REINFORCED CONCRETE PIPE (DRAINAGE)  
 TR = TELEPHONE RISER  
 WV = WATER VALVE  
 FH = FIRE HYDRANT  
 SSMH = SANITARY SEWER MANHOLE  
 PP = POWER OR UTILITY POLE  
 OHE = OVERHEAD POWER OR UTILITY LINE  
 ROW = RIGHT-OF-WAY  
 CL = CENTERLINE  
 P = PROPERTY LINE  
 BL = BUILDING LINE  
 DE = DRAINAGE EASEMENT  
 UE = UTILITY EASEMENT  
 SSE = SANITARY SEWER EASEMENT  
 WE = WATER LINE EASEMENT  
 TUE = T.U. UTILITY EASEMENT

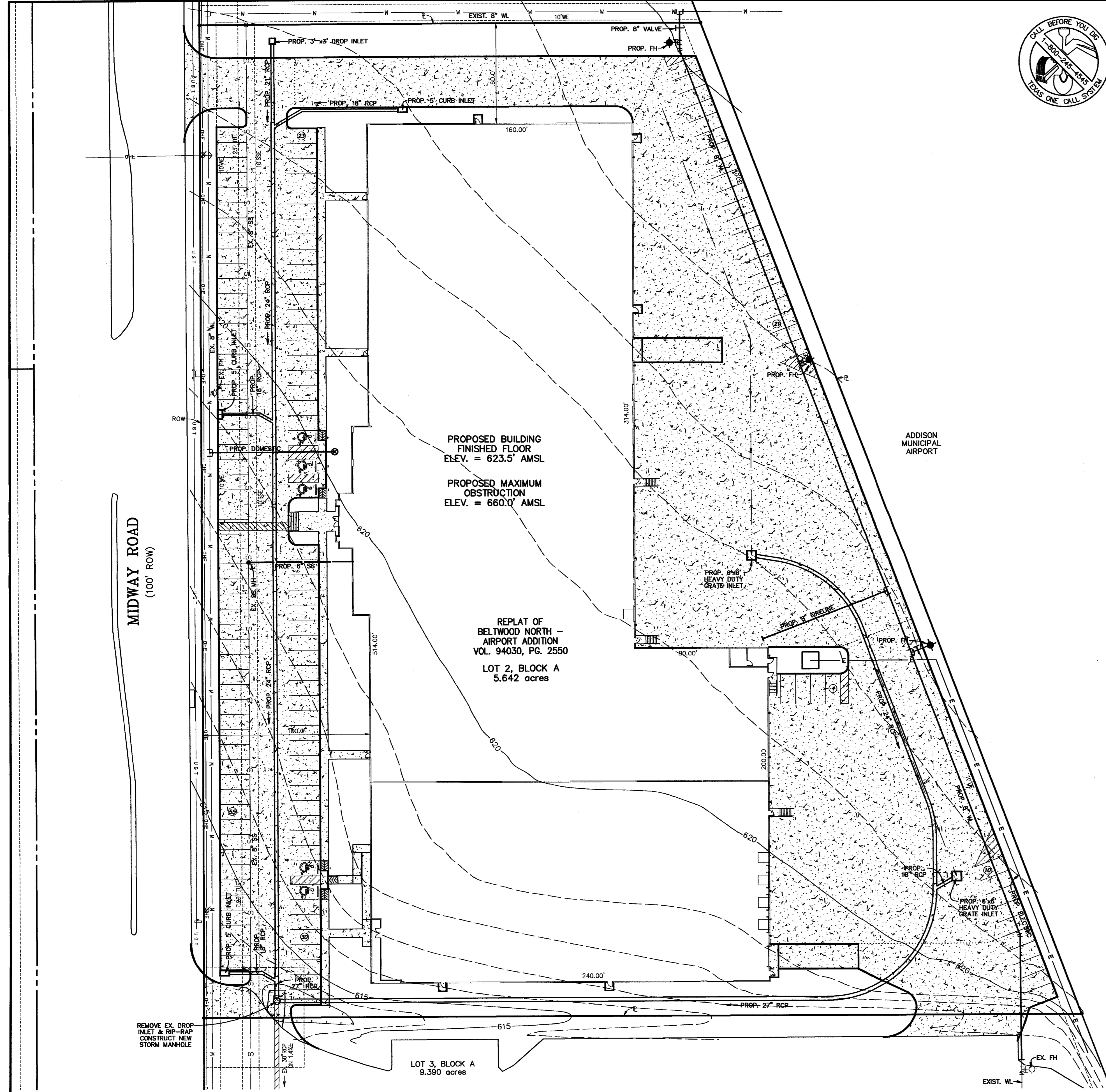
# PRELIMINARY

NOT FOR CONSTRUCTION!!!



- LEGEND**
- OHE — EXIST. OVERHEAD UTILITY
  - UGT — EXIST. UNDERGROUND CABLE
  - W — W — EXIST. WATER LINE
  - S — S — EXIST. SANITARY SEWER
  - 460 — EXISTING CONTOURS
  - ← — — — DIRECTION OF FLOW
  - - - - - EASEMENT
  - ..... PROPOSED RIDGE LINE
  - · - · - · - PROPOSED DRAINAGE SWALE
  - [ ] — PROPOSED STORM SEWER W/ INLET
  - [ ] — EXISTING STORM SEWER W/ INLET

**OWNER & DEVELOPER**  
**S & B INVESTMENTS**  
 P.O. BOX 700008  
 DALLAS, TEXAS 75370  
 PHONE: 972.735.8855  
 FAX: 972.735.8896  
 CONTACT: VIC SAHM



2	Revised Water Lines	CAC	05/21/08
1	Submitted to the Client	CAC	10/11/07
NO.	REVISIONS NUMBER	BY	DATE

**PEAK XV**  
 ENGINEERING GROUP, INC.  
 CIVIL ENGINEERING • LAND DEVELOPMENT

4009 CLIPPER COURT  
 PLANO, TX 75023-6609  
 PHONE 469.251.6840  
 FAX 972.965.7121  
 www.peakxveng.com

RELEASED ON 05/21/07 FOR CONCEPT BIDDING PURPOSES ONLY

THE SEAL APPEARING ON THIS DOCUMENT WAS AUTHORIZED BY  
 CECIL A. CHESHER, P.E. #92674

**PRELIMINARY UTILITY PLAN**  
 (LOT 2, BLOCK A) RE-PLAT OF  
**BELTWOOD NORTH - AIRPORT ADDITION**  
 TOWN OF ADDISON, DALLAS COUNTY, TEXAS

JOB NUMBER  
**18-0701**

SHEET NUMBER  
**C.2**

U:\018-Ave Schim\2007\018-0701 Airport Addition\PRELIM CIVIL 002.dwg Wed May 21 08:50:33 2008