

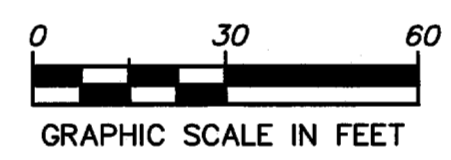


BENCHMARKS
 TEXAS DEPT. OF TRANSPORTATION GPS MONUMENT "COC 6"
 STATION IS A 2" BRASS DISK SET IN CONCRETE ON TOP OF
 CURB INLET LOCATED 42' WEST OF THE CL OF MIDWAY RD. &
 520' SOUTH OF TRINITY MILLS ROAD.
 LAT. 32°59'09.23628"N, LONG. 96°50'32.20897"W, ELEV. 664.710'
 TOWN OF ADDISON GPS MONUMENT "AA-6"
 STATION IS A 3" ALUMINUM DISK SET IN CONCRETE AT THE
 SOUTH RADIUS POINT OF A 3' WIDE TRAFFIC ISLAND IN THE
 TOWN OF ADDISON SERVICE CENTER COMPOUND.
 LAT. 32°58'51.522"N, LONG. 96°50'23.8757"W, ELEV. 652.26'

ABBREVIATIONS LEGEND
 MIN. FF = MINIMUM FINISHED FLOOR ELEV.
 RCP = REINFORCED CONCRETE PIPE (DRAINAGE)
 TR = TELEPHONE RISER
 WV = WATER VALVE
 FH = FIRE HYDRANT
 SSMH = SANITARY SEWER MANHOLE
 PP = POWER OR UTILITY POLE
 OHE = OVERHEAD POWER OR UTILITY LINE
 ROW = RIGHT-OF-WAY
 CL = CENTERLINE
 PL = PROPERTY LINE
 BL = BUILDING LINE
 DE = DRAINAGE EASEMENT
 UE = UTILITY EASEMENT
 SSE = SANITARY SEWER EASEMENT
 WE = WATER LINE EASEMENT
 TUE = T.U. UTILITY EASEMENT

PRELIMINARY

NOT FOR CONSTRUCTION!!!



LEGEND

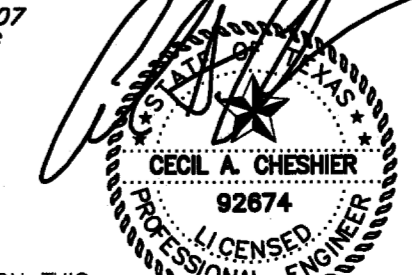
- OHE — EXIST. OVERHEAD UTILITY
- U & T — EXIST. UNDERGROUND CABLE
- W — W — EXIST. WATER LINE
- S — S — EXIST. SANITARY SEWER
- 460 — EXISTING CONTOURS
- ← DIRECTION OF FLOW
- - - - - EASEMENT
- PROPOSED RIDGE LINE
- — — — — PROPOSED DRAINAGE SWALE
- [] — PROPOSED STORM SEWER W/ INLET
- [] — EXISTING STORM SEWER W/ INLET

OWNER & DEVELOPER

S & B INVESTMENTS
 P.O. BOX 700008
 DALLAS, TEXAS 75370
 PHONE: 972.735.8855
 FAX: 972.735.8896
 CONTACT: VIC SAHM

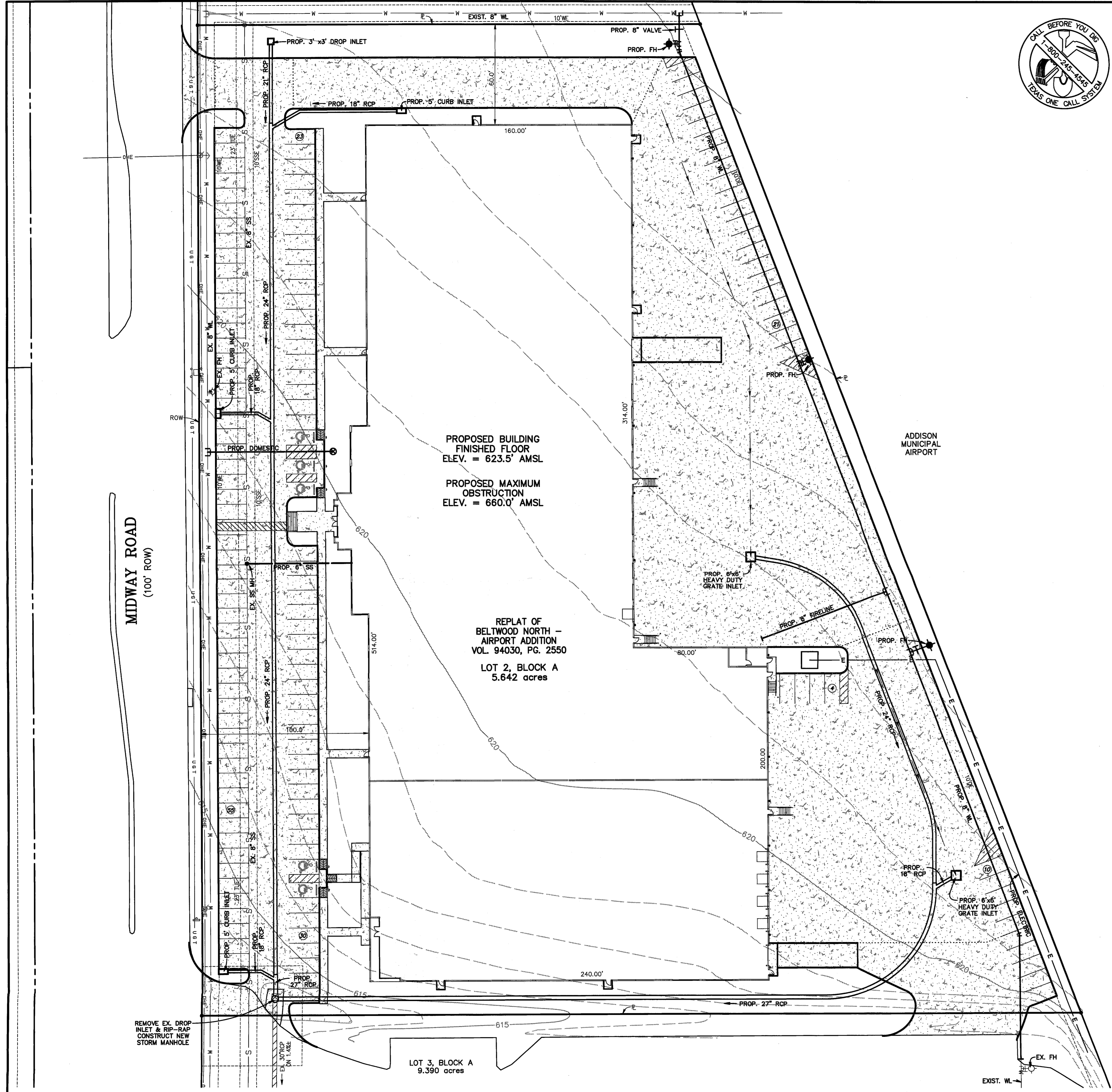
2	Revised Water Lines	CAC	05/21/08
1	Submitted to the Client	CAC	10/11/07
NO.	REVISIONS NUMBER	BY	DATE

PEAK XV
 Civil Engineering • Land Development
 4009 CLIPPER COURT
 PLANO, TX 78023-6609
 PHONE 469.261.6940
 FAX 972.985.7121
 www.peakxv.com



RELEASED ON 05/21/07
 FOR CONCEPT/BIDDING
 PURPOSES ONLY!
 THE SEAL APPEARING ON THIS
 DOCUMENT WAS AUTHORIZED BY
 CECIL A. CHESHER, P.E. #92674

PRELIMINARY UTILITY PLAN		JOB NUMBER
(LOT 2, BLOCK A) RE-PLAT OF		18-0701
BELTWOOD NORTH - AIRPORT ADDITION		SHEET NUMBER
TOWN OF ADDISON, DALLAS COUNTY, TEXAS		C.2



U:\018-Vic_Sahm\2007\018-0701 Airport Addition\PRELIM CIVIL 002.ppt
 Web May 21 08:30:33 2008