

LINE	BEARING	LENGTH
T1	N78°07'57"W	26.58'
T2	S44°34'30"W	10.93'
T3	N89°55'24"E	20.00'
T4	S85°40'41"E	26.08'
T5	S44°34'30"W	14.06'
T6	N89°55'24"E	53.00'
T7	S89°55'24"W	20.00'
T8	N0°04'36"W	7.00'

PARKWAY BUSINESS CENTER I
VOLUME 81237, PAGE 1939
M.R.D.C.T.

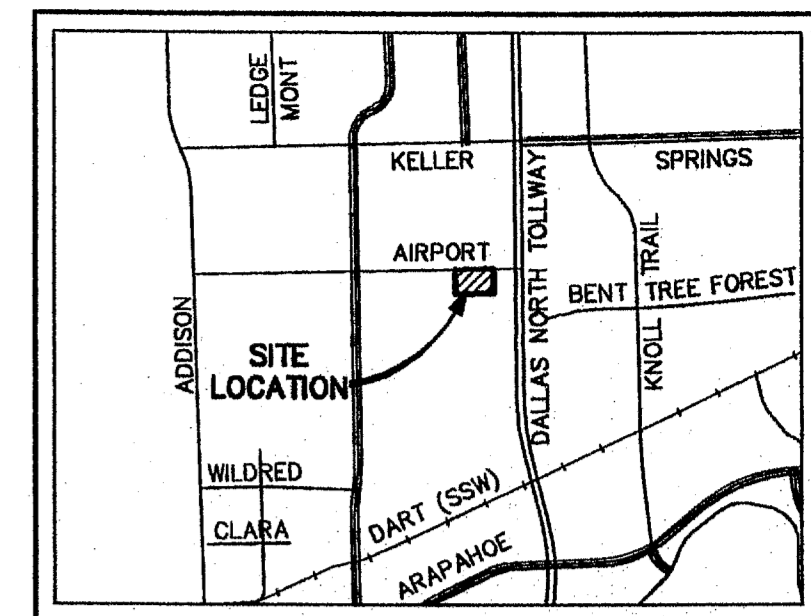
HWK, INC.
VOLUME 98060, PAGE 06410
D.R.D.C.T.

SWG, LTD.
VOLUME 96048, PAGE 3806
D.R.D.C.T.

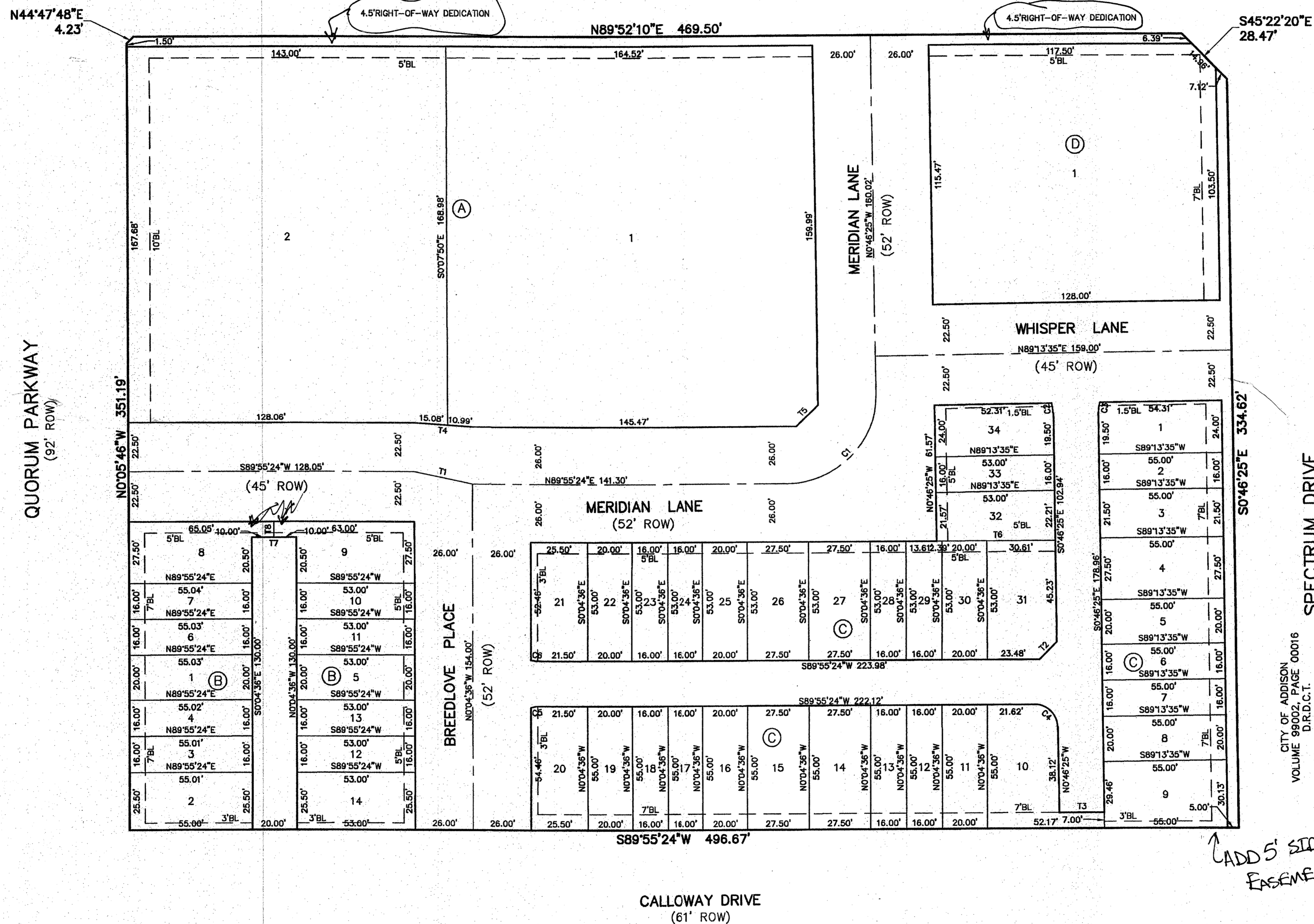
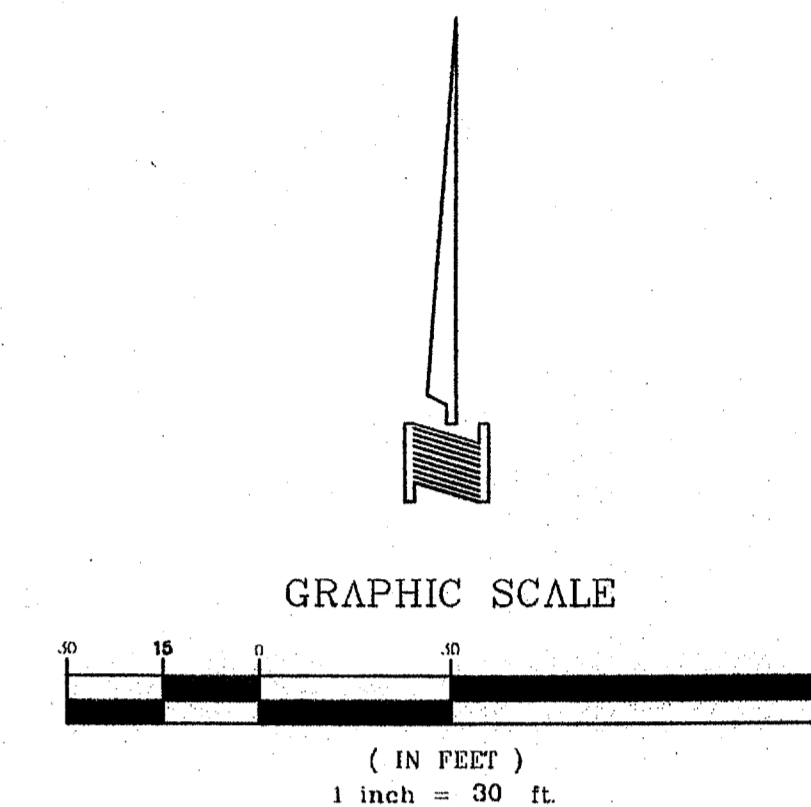
FAIRFIELD ADDISON CIRCLE, L.P.
DOCUMENT NO. 200600426816
D.R.D.C.T.

HARRIS ADDITION
VOLUME 78017, PAGE 1067
M.R.D.C.T.

CURVE	DELTA	RADIUS	TANGENT	LENGTH	CHORD
C1	90.70	40.00	40.49'	63.32	N44°34'29"E 63.32'
C2	17.46	15.00	2.30'	4.57	N9°30'08"W 4.57'
C3	17.46	15.00	2.30'	4.57	S7°57'19"W 4.57'
C4	89.30	10.00	9.88'	15.59	N45°25'30"W 15.59'
C5	15.47	15.00	2.04'	4.05	S82°11'25"W 4.05'
C6	15.47	15.00	2.04'	4.05	S82°20'37"E 4.05'



LOCATION MAP
NOT TO SCALE



CITY OF ADDISON
VOLUME 99002, PAGE 00016
D.R.D.C.T.

SPECTRUM DRIVE
(VARIABLE WIDTH ROW)

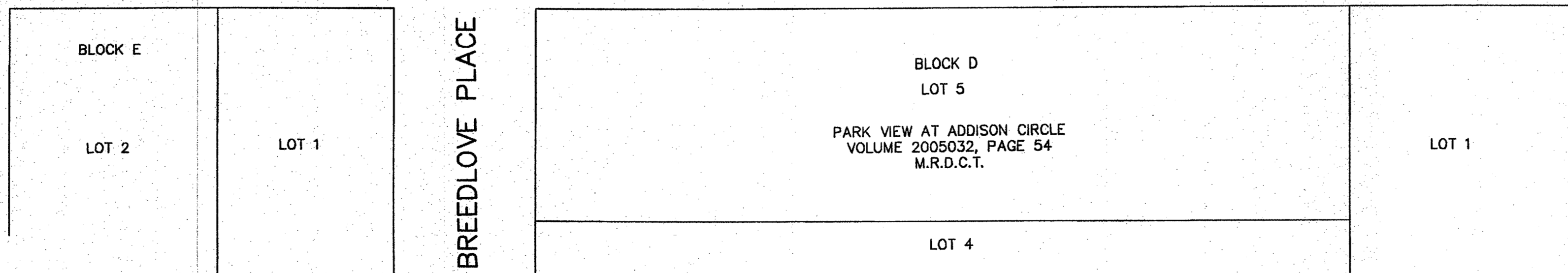
CITY OF ADDISON
VOLUME 99002, PAGE 00016
D.R.D.C.T.

15851 DALLAS NORTH PARKWAY ADDITION
VOLUME 85021, PAGE 1666
M.R.D.C.T.

- S.U.E.
- EASEMENTS NEEDED ALONG ALLEYS?
- CANCEL PLANS
- ADD A REFERENCE TO THE AMENDMENT TO THE UC ZONING ORDINANCE TO THE FACE OF THE PLAT.
- ADD CENTERLINES TO EX. STREETS AND DIMS TO THE CENTERLINE
- REVISE DEDICATION STATEMENT FORWARD.
- ADD POB.
- ENCLOSURE SHEET

ADD 5' SIDEWALK EASEMENT.

- LEGEND**
- BL = BUILDING LINE
 - D.R.D.C.T. = DEED RECORDS, DENTON COUNTY, TEXAS
 - P.R.D.C.T. = PLAT RECORDS, DENTON COUNTY, TEXAS
 - DOC. NO. = DOCUMENT NUMBER
 - IRF = IRON ROD FOUND
 - IPF = IRON PIPE FOUND
 - ⊙ = 1/2" IRON ROD FOUND W/ YELLOW PLASTIC CAP STAMPED "DAA" (UNLESS OTHERWISE NOTED)
 - = 1/2" IRON ROD SET W/ YELLOW PLASTIC CAP STAMPED "DAA"



SNK ALLEGRO SPECTRUM, LP
DOCUMENT NO. 20070227088
D.R.D.C.T.

51 LOTS ~ 4.019 ACRES
FINAL PLAT
MERIDIAN SQUARE
A REPLAT OF
QUORUM EAST ADDITION
TOWN OF ADDISON
G.W. FISHER SURVEY ~ ABSTRACT NO. 482
DALLAS COUNTY, TEXAS
OCTOBER 2008 SCALE: 1"=30'
OWNERS
ADDISON URBAN DEVELOPMENT PARTNERS, LLC
500 W. LOOKOUT DRIVE
972-248-2147 RICHARDSON, TEXAS 75080
ENGINEER

DOWDEY, ANDERSON & ASSOCIATES, INC.
5225 Village Creek Drive, Suite 200 Plano, Texas 75093 972-931-0694