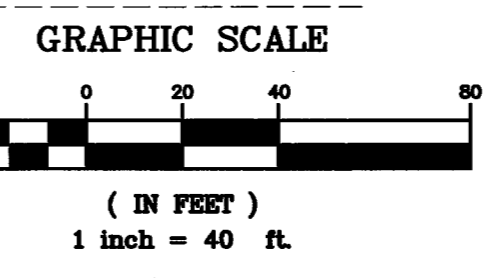
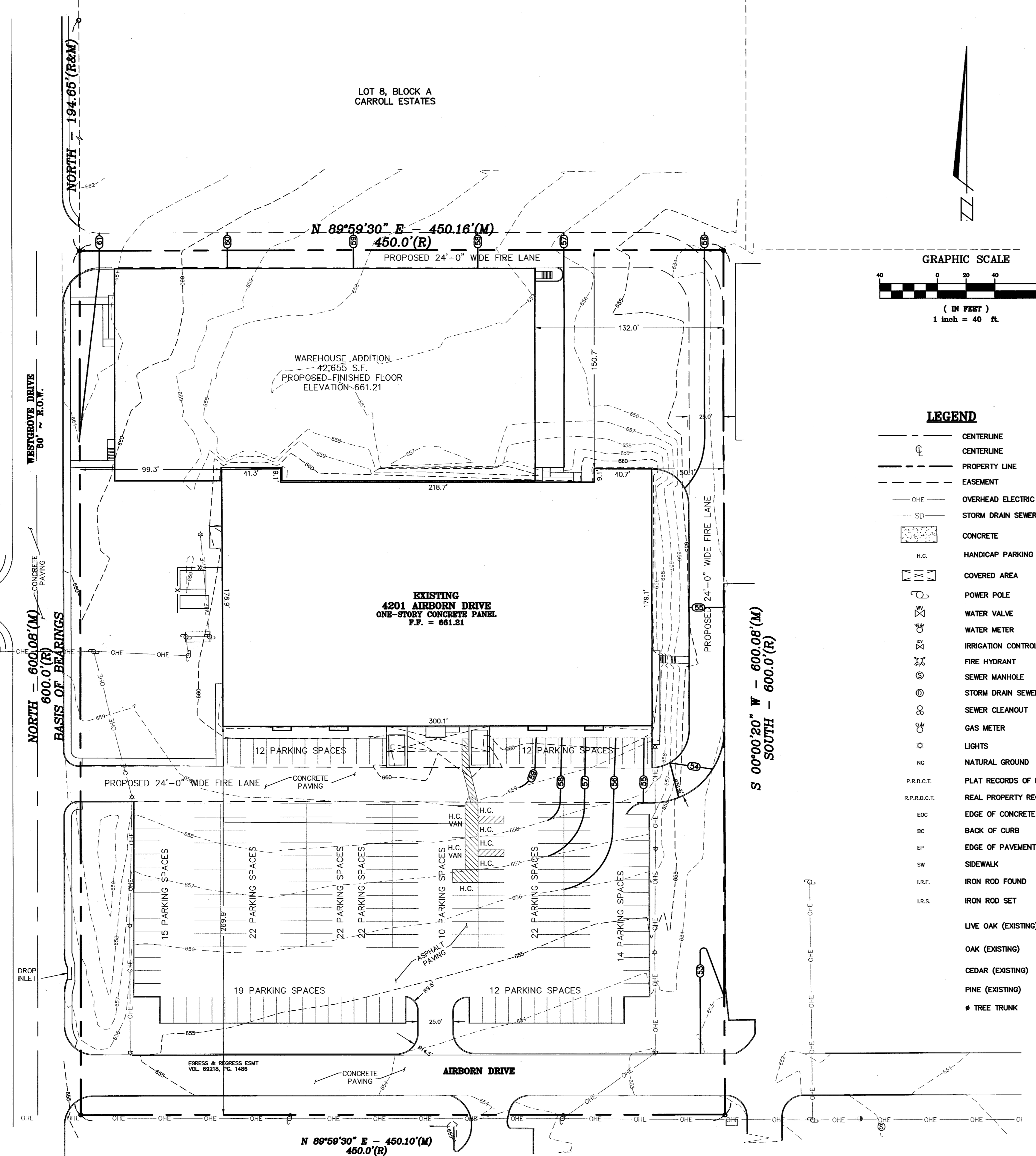


LOT 8, BLOCK A
CARROLL ESTATES



- LEGEND**
- CENTERLINE
 - CENTERLINE
 - - - PROPERTY LINE
 - - - EASEMENT
 - OHE OVERHEAD ELECTRIC LINES
 - SD STORM DRAIN SEWER
 - CONCRETE
 - H.C. HANDICAP PARKING
 - COVERED AREA
 - POWER POLE
 - WATER VALVE
 - WATER METER
 - IRRIGATION CONTROL VALVE
 - FIRE HYDRANT
 - SEWER MANHOLE
 - STORM DRAIN SEWER MANHOLE
 - SEWER CLEANOUT
 - GAS METER
 - LIGHTS
 - NATURAL GROUND
 - P.R.D.C.T. PLAT RECORDS OF DALLAS COUNTY, TEXAS
 - R.P.R.D.C.T. REAL PROPERTY RECORDS OF DALLAS COUNTY, TEXAS
 - EOC EDGE OF CONCRETE
 - BC BACK OF CURB
 - EP EDGE OF PAVEMENT
 - SW SIDEWALK
 - I.R.F. IRON ROD FOUND
 - I.R.S. IRON ROD SET
 - LIVE OAK (EXISTING)
 - OAK (EXISTING)
 - CEDAR (EXISTING)
 - PINE (EXISTING)
 - ♣ TREE TRUNK



DATE:	REVISION DESCRIPTION:

PRELIMINARY GRADING PLAN
PORTION OF LOTS 6, 7 & 8
BLOCK A, CARROLL ESTATES

CITY OF ADDISON DALLAS COUNTY TEXAS

DATE: 04-04-08	SCALE: 1" = 40'	FILE NUMBER: 4221AIR-GRADE	DATA FILE:

K KISTENMACHER ENGINEERING COMPANY, INC.
CONSULTING ENGINEERING • LAND PLANNING • SURVEYING
1420 GERONIMO DRIVE, SUITE A2 • EL PASO, TEXAS 79925 • 915-778-4478
6336 GREENVILLE AVE, SUITE C • DALLAS, TEXAS 75206 • 214-234-0011

DRAWN BY: MGS	FIELD BOOK:
CHECKED BY: GSK	SHEET 1 OF 1