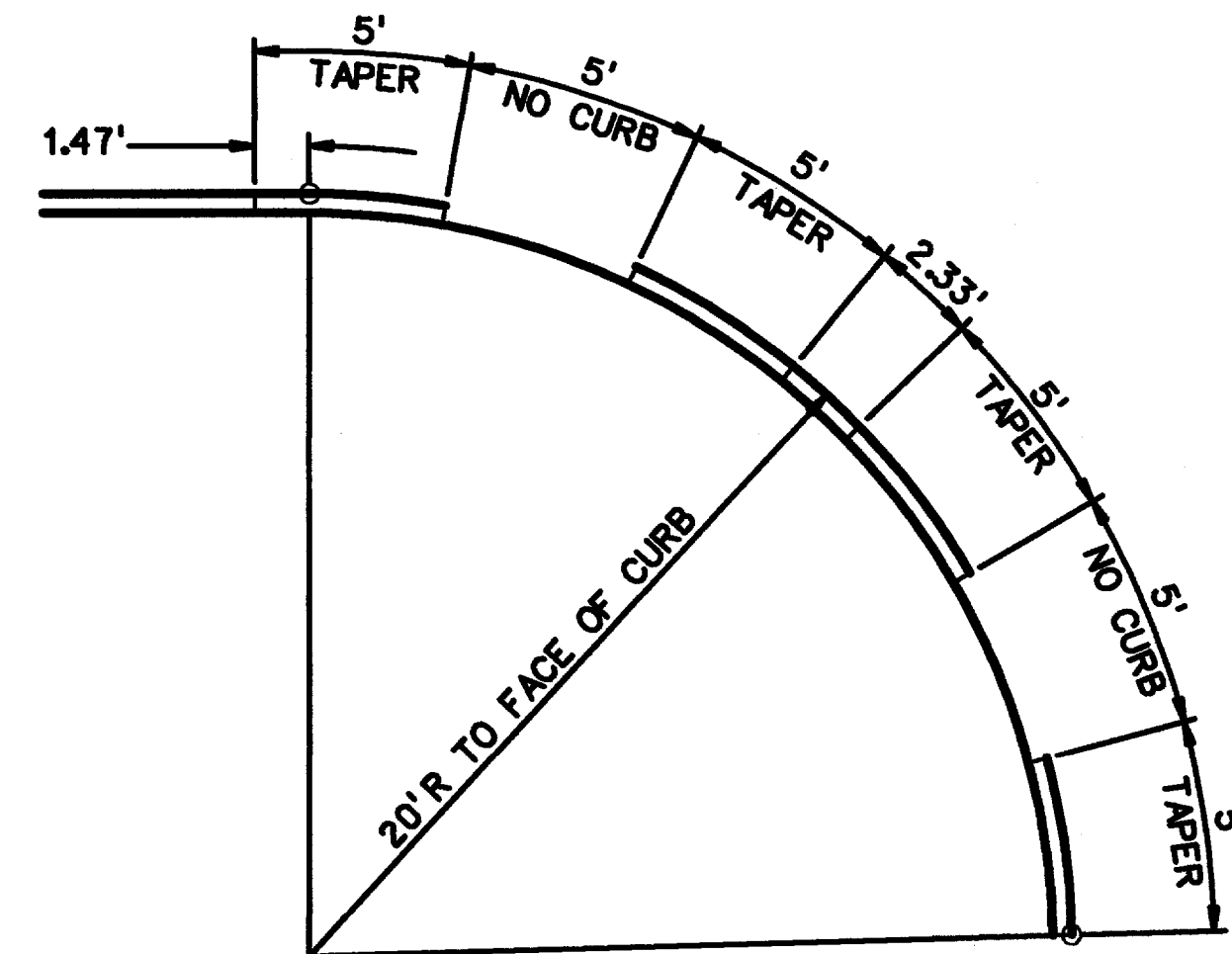


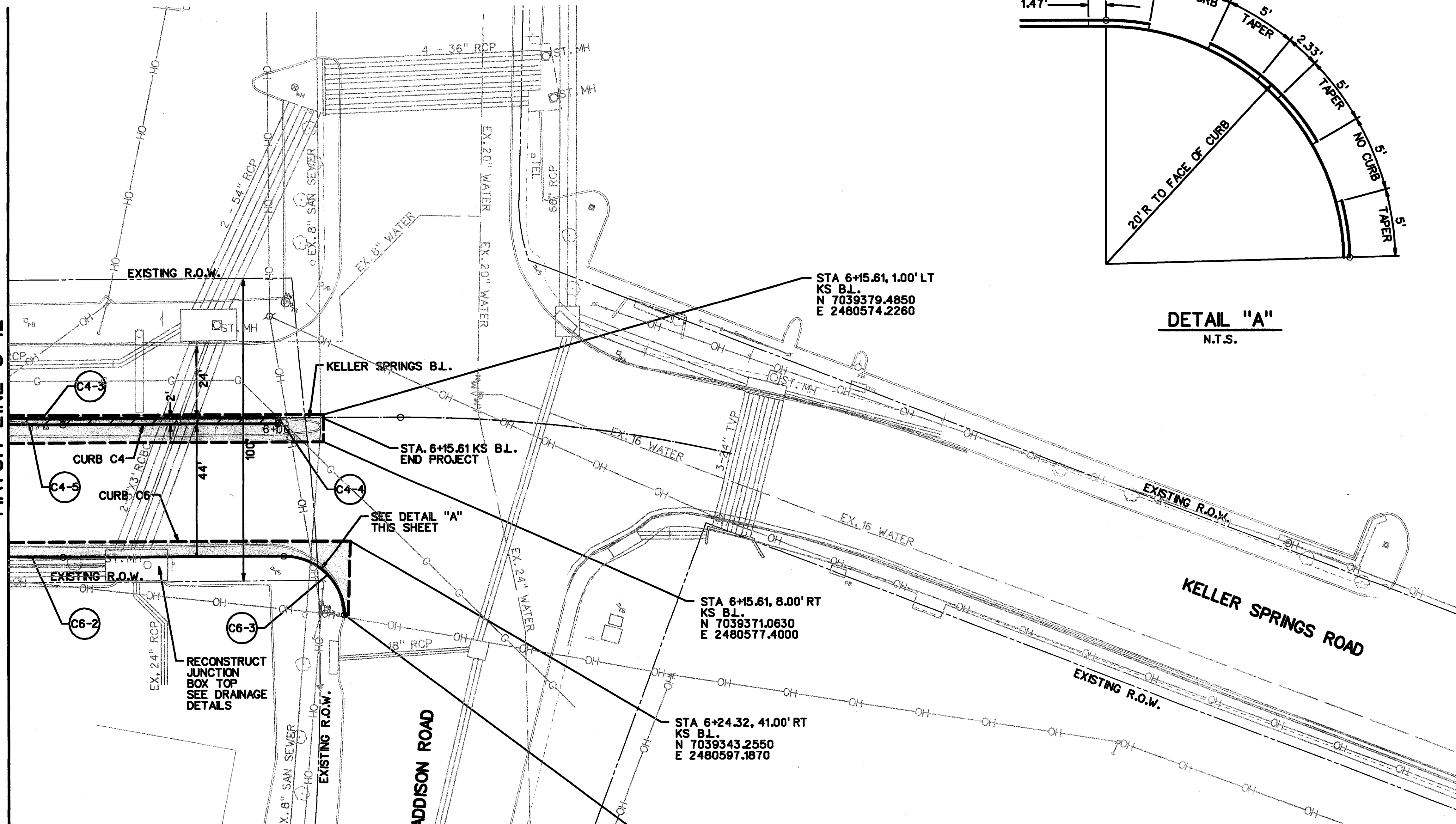
LEGEND

- CONCRETE PAVING
- MEDIAN PAVING
- ASPHALT PAVING
- CONCRETE RIPRAP
- CONCRETE SIDEWALK



DETAIL "A"
N.T.S.

MATCH LINE 5+12



NOTES:

1. STATIONING SHOWN HEREON IS ALONG THE FACE OF CURB.
2. SEE PAVING LAYOUT FOR CURB DIMENSIONAL DATA.

PROGRESS REVIEW - 90%
 THIS DOCUMENT IS RELEASED FOR THE PURPOSE OF INTERIM REVIEW UNDER THE AUTHORITY OF RICHARD T. GRICE, P.E. 37520 ON 12-19-03. IT IS NOT TO BE USED FOR CONSTRUCTION, BIDDING, OR PERMITS PURPOSES.

STA 6+15.61, 1.00' LT
KS B.L.
N 7039379.4850
E 2480574.2260

STA. 6+15.61 KS B.L.
END PROJECT

STA 6+15.61, 8.00' RT
KS B.L.
N 7039371.0630
E 2480577.4000

STA 6+24.32, 41.00' RT
KS B.L.
N 7039343.2550
E 2480597.1870

END CURB C6
STA 6+22.41, 65.46' RT
KS B.L.
N 7039319.6939
E 2480604.0268

RECONSTRUCT
JUNCTION
BOX TOP
SEE DRAINAGE
DETAILS

NO.	DATE	REVISION	APPROV.
AATT/ADDISON RD INTERSECTION IMP.			
NCTA NORTH TEXAS TOLLWAY AUTHORITY			
PAVING PLAN (STA. 5+12 TO END)			
ARS Engineers, Inc. 5910 N. Central Expressway, Suite 1000 Dallas, Texas 75206 (214) 739-3152 Fax (214) 739-3169			
DRAWN	KRH	DATE	12-19-03
CHECKED	RTG	DATE	12-19-03
DESIGNED	ARS	DATE	12-19-03
SCALE	AS NOTED		
CONTRACT NO.		DNT-426	SHEET 16 OF 89