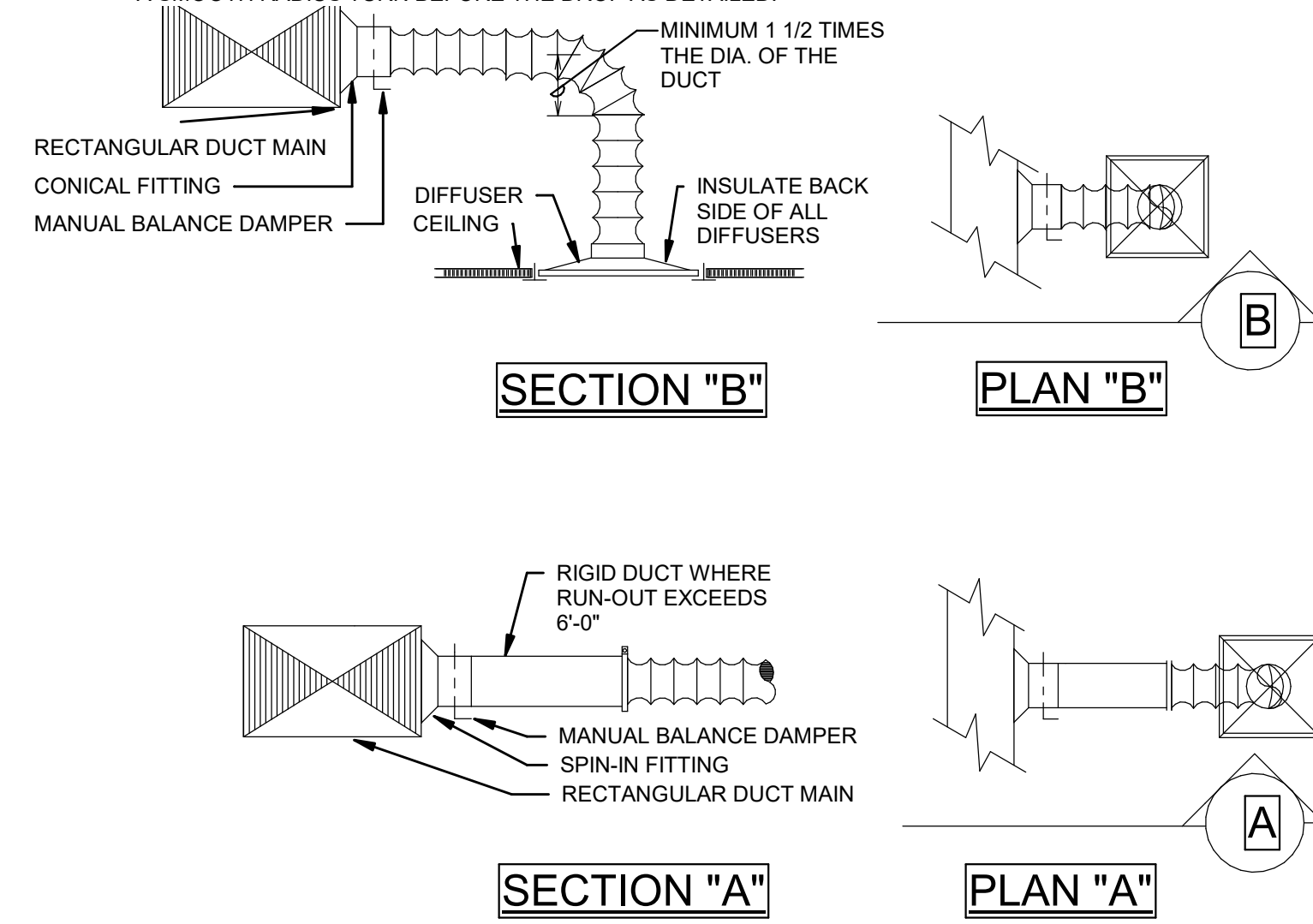
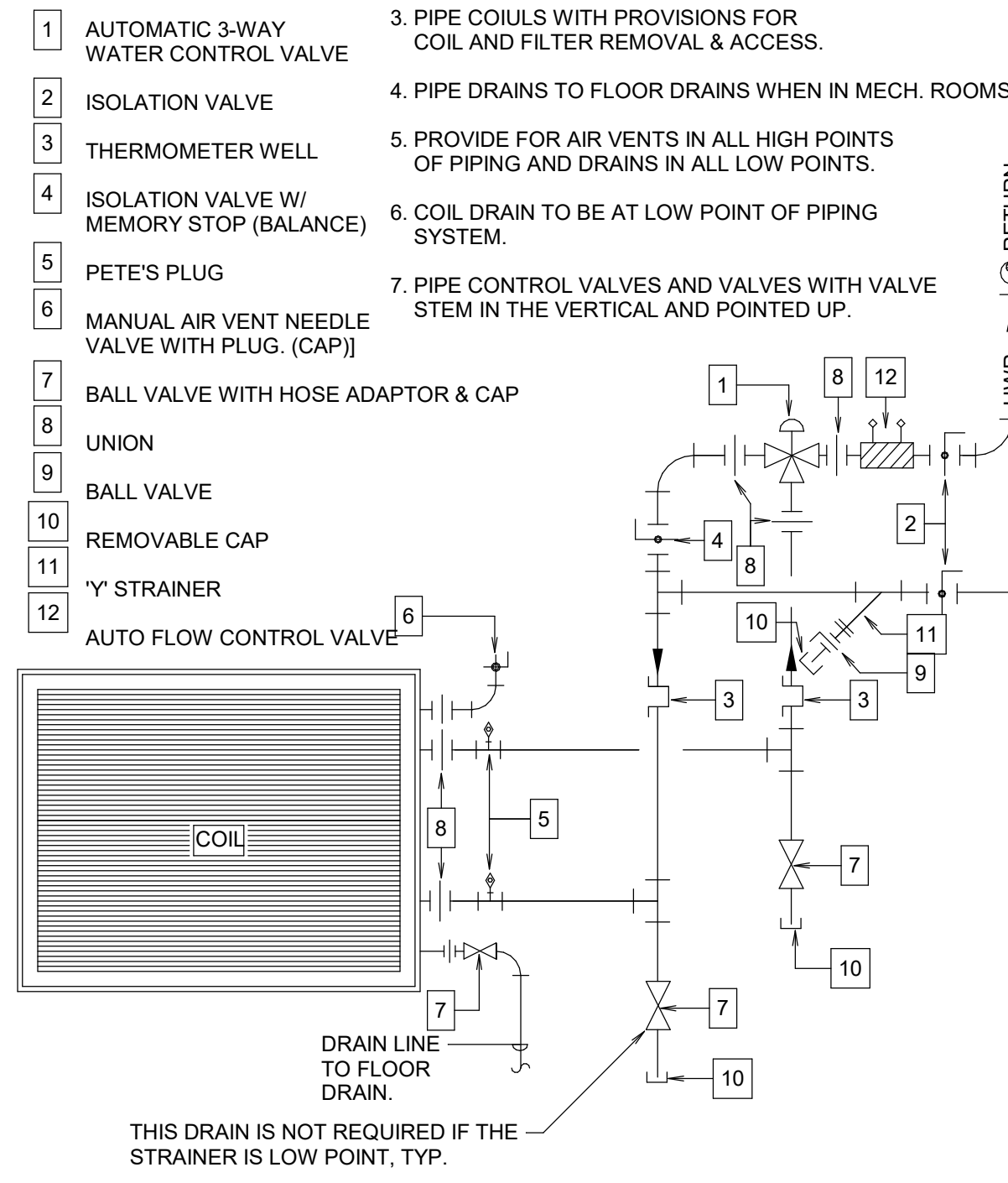


- GENERAL NOTES:**
- FOR ROUND DUCT USE STRAIGHT SPIN-IN TYPE FITTINGS WITH SEPARATE LOCKING HANDLE BALANCING DAMPERS IN ALL AREAS WITH LAY-IN CEILINGS.
 - IN AREAS WITH HARD CEILINGS, USE SPIN-IN FITTINGS AND DAMPERS WITH REMOTE YOUNG REGULATORS LOCATED ON THE CEILING. ALTERNATELY PROVIDE CEILING ACCESS DOORS LARGE ENOUGH TO FACILITATE AIR BALANCING. THE NUMBER OF ACCESS PANELS SHALL BE MINIMIZED AND CONSOLIDATED. ALL ACCESS PANEL LOCATIONS SHALL BE APPROVED BY THE ARCHITECT PRIOR TO INSTALLATION.
 - MAXIMUM LENGTH OF FLEXIBLE DUCT USED SHALL NOT EXCEED 6'-0". RIGID AND FLEX DUCT DIAMETER TO BE EQUAL TO NECK SIZE SHOWN.
 - UNLESS SPECIFICALLY NOTED OTHERWISE, FLEXIBLE DUCT DROPS SHOULD BE STRAIGHT DOWN TO THE DIFFUSER NECK WITH NO MORE THAN A 10' OFFSET FROM THE VERTICAL. PROVIDE A SMOOTH RADIUS TURN BEFORE THE DROP AS DETAILED.

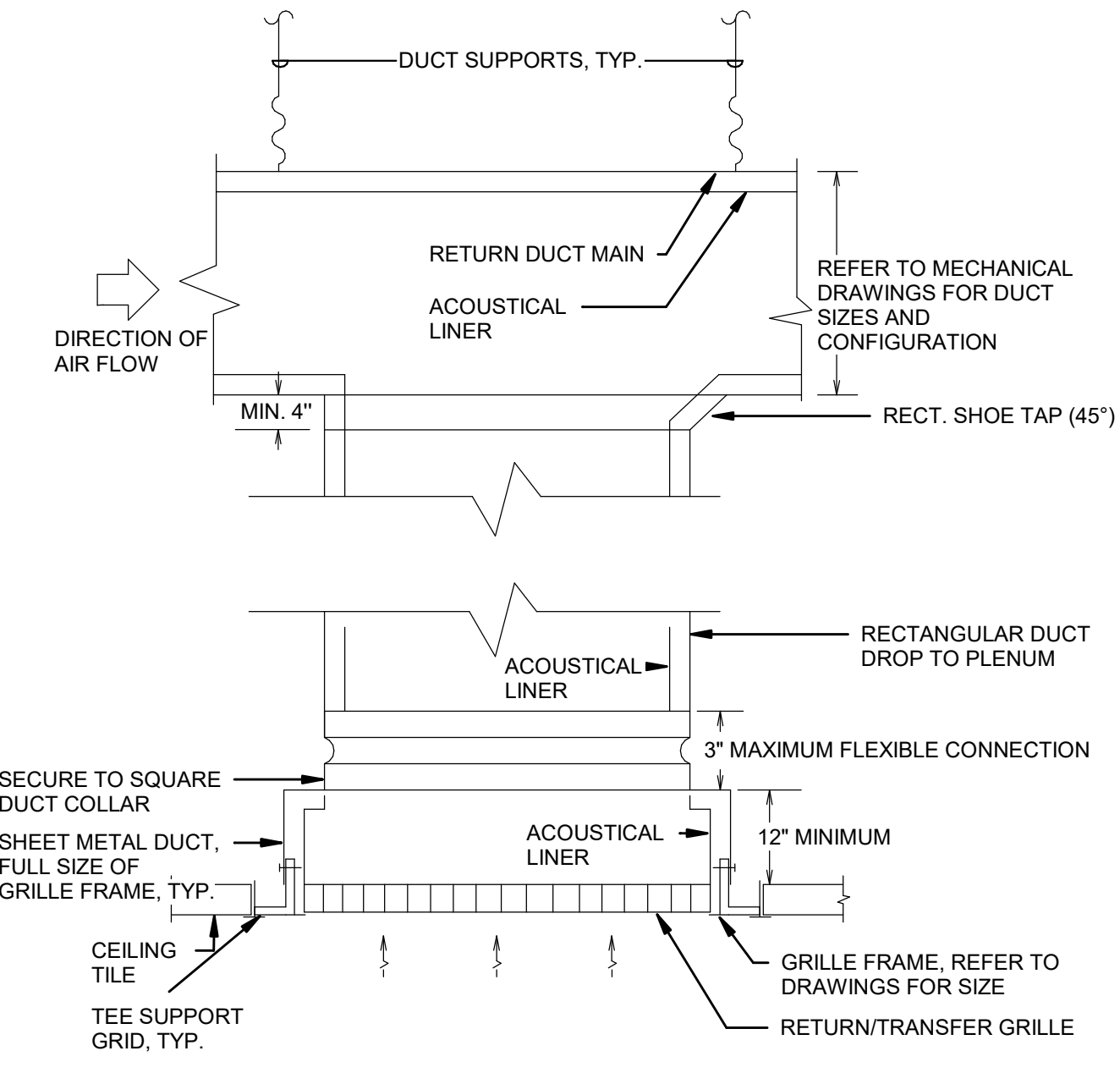


1 SUPPLY DIFFUSER DETAILS
NO SCALE

- NOTE:**
- ALL COILS SHALL HAVE 2-WAY VALVE PIPING, UNLESS OTHERWISE NOTED ON FLOOR PLANS TO HAVE 3-WAY VALVES. DELETE BYPASS ON TWO-WAY VALVES.
 - COIL SHALL BE PIPED WITH WATER FLOW COUNTER TO AIR FLOW.
 - PIPE COILS WITH PROVISIONS FOR COIL AND FILTER REMOVAL & ACCESS.
 - PIPE DRAINS TO FLOOR DRAINS WHEN IN MECH. ROOMS.
 - PROVIDE FOR AIR VENTS IN ALL HIGH POINTS OF PIPING AND DRAINS IN ALL LOW POINTS.
 - COIL DRAIN TO BE AT LOW POINT OF PIPING SYSTEM.
 - PIPE CONTROL VALVES AND VALVES WITH VALVE STEM IN THE VERTICAL AND POINTED UP.

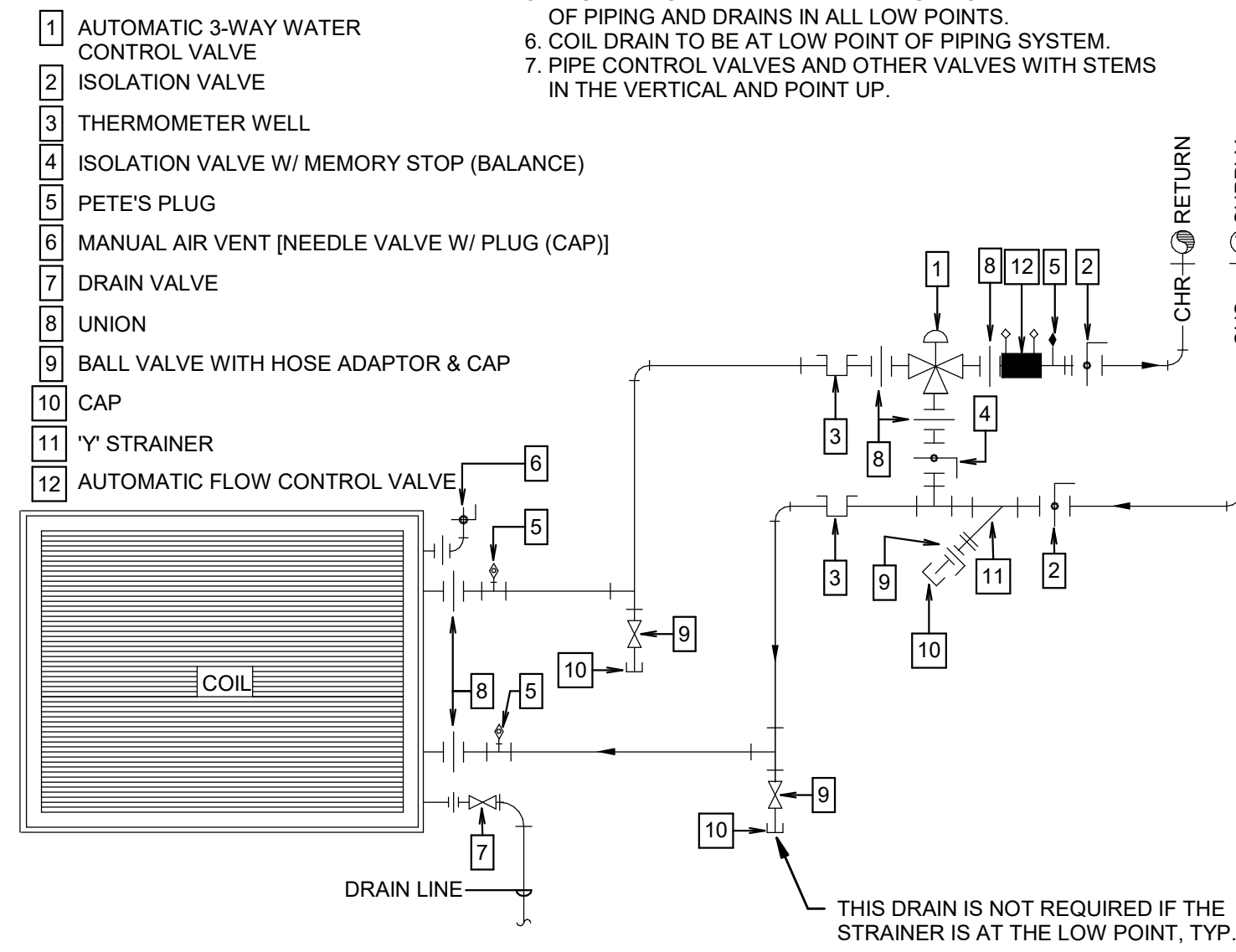


2 SINGLE HEATING WATER COIL WITH 3-WAY VALVE - AHU
NO SCALE



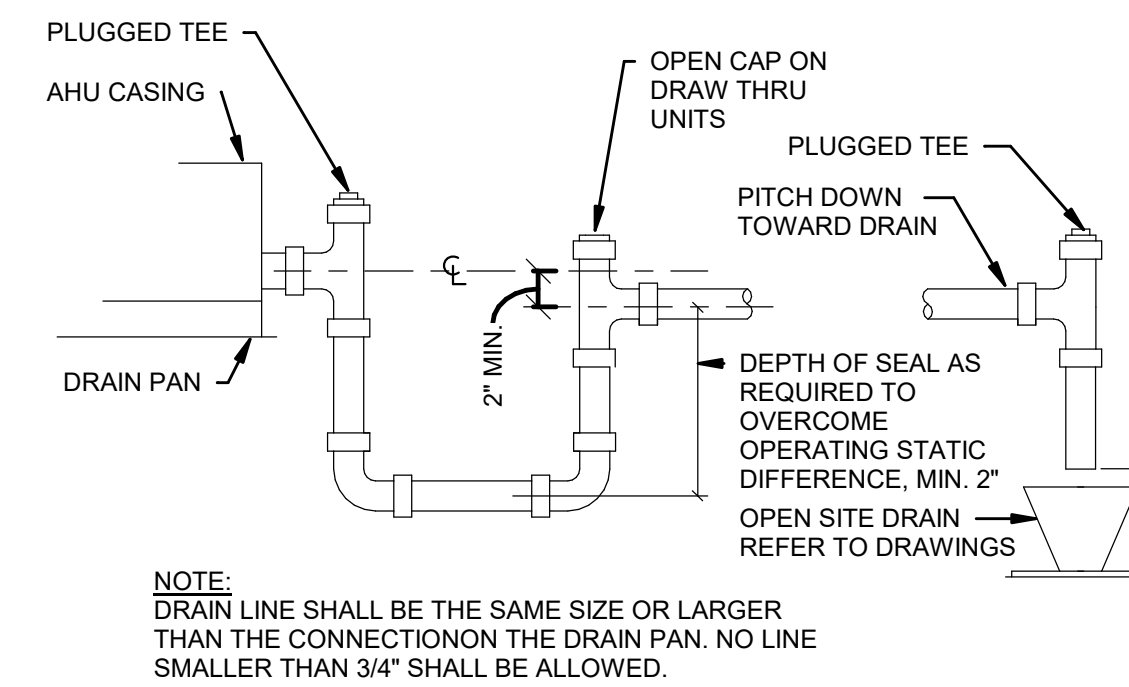
3 RETURN/TRANSFER AIR GRILLE (RECTANGULAR DUCT) DETAIL
NO SCALE

- NOTE:**
- ALL COILS HAVE 2-WAY VALVE PIPING UNLESS OTHERWISE NOTED ON PIPING DRAWINGS. DELETE BYPASS FOR 2-WAY VALVES.
 - ALL COILS SHALL BE PIPED WITH WATER FLOW COUNTER TO AIR FLOW.
 - PIPE COILS WITH PROVISIONS FOR COIL AND FILTER REMOVAL & ACCESS.
 - PIPE DRAINS TO FLOOR DRAINS WHEN IN MECH. ROOMS.
 - PROVIDE FOR AIR VENTS IN ALL HIGH POINTS OF PIPING AND DRAINS IN ALL LOW POINTS.
 - COIL DRAIN TO BE AT LOW POINT OF PIPING SYSTEM.
 - PIPE CONTROL VALVES AND OTHER VALVES WITH STEMS IN THE VERTICAL AND POINT UP.

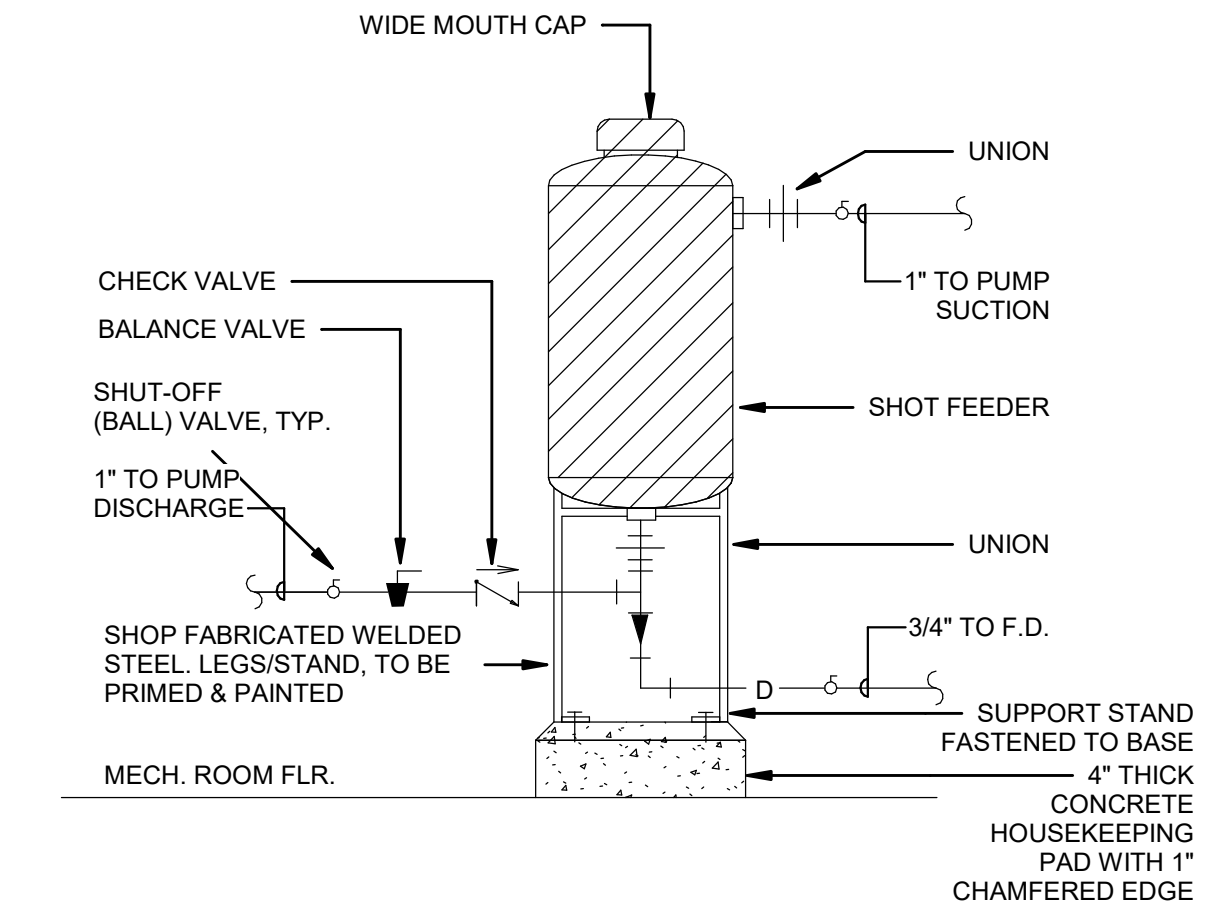


4 TYPICAL FAN COIL A/C UNIT DETAIL
NO SCALE

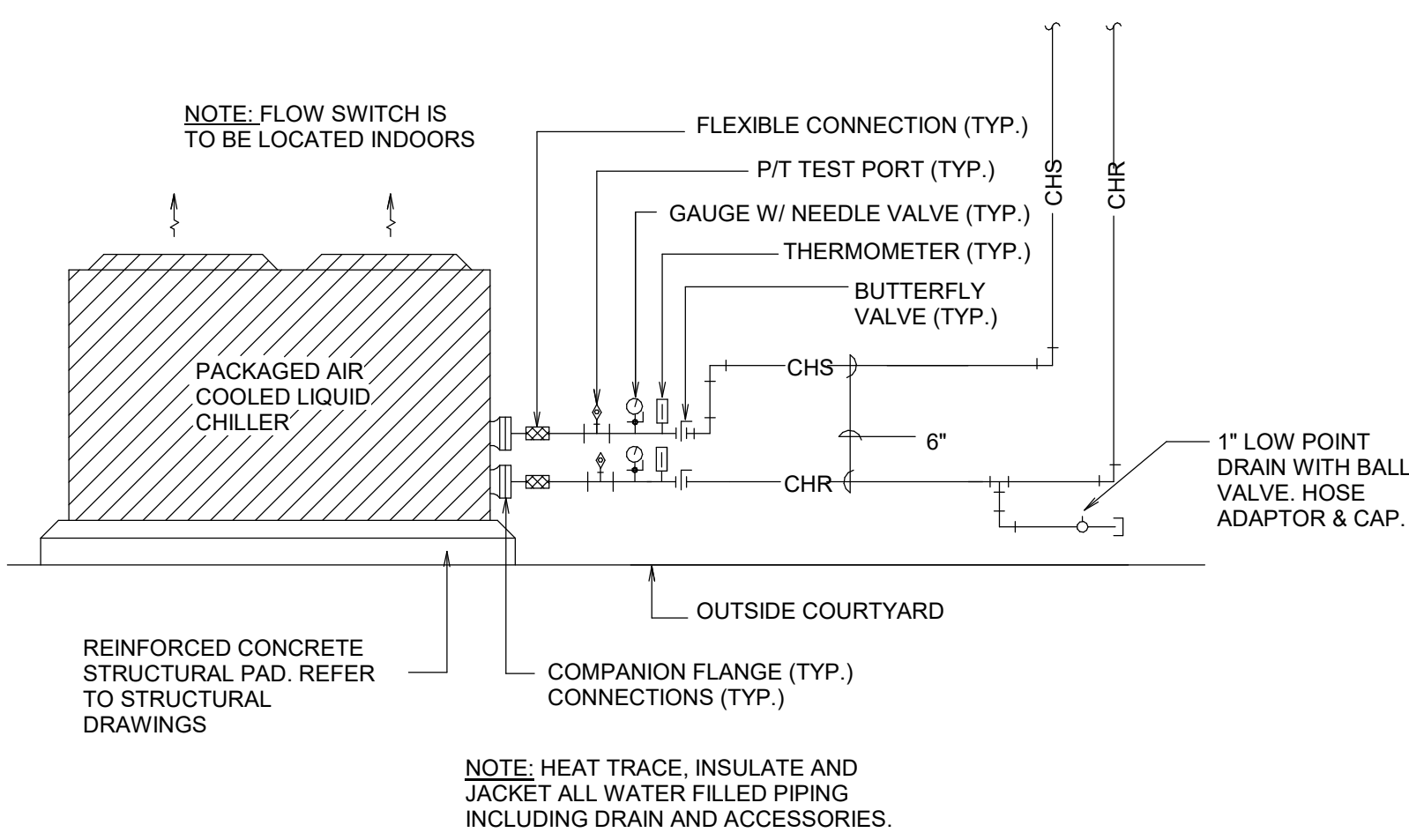
5 SINGLE CHILLED WATER COIL WITH 3-WAY VALVE - AHU
NO SCALE



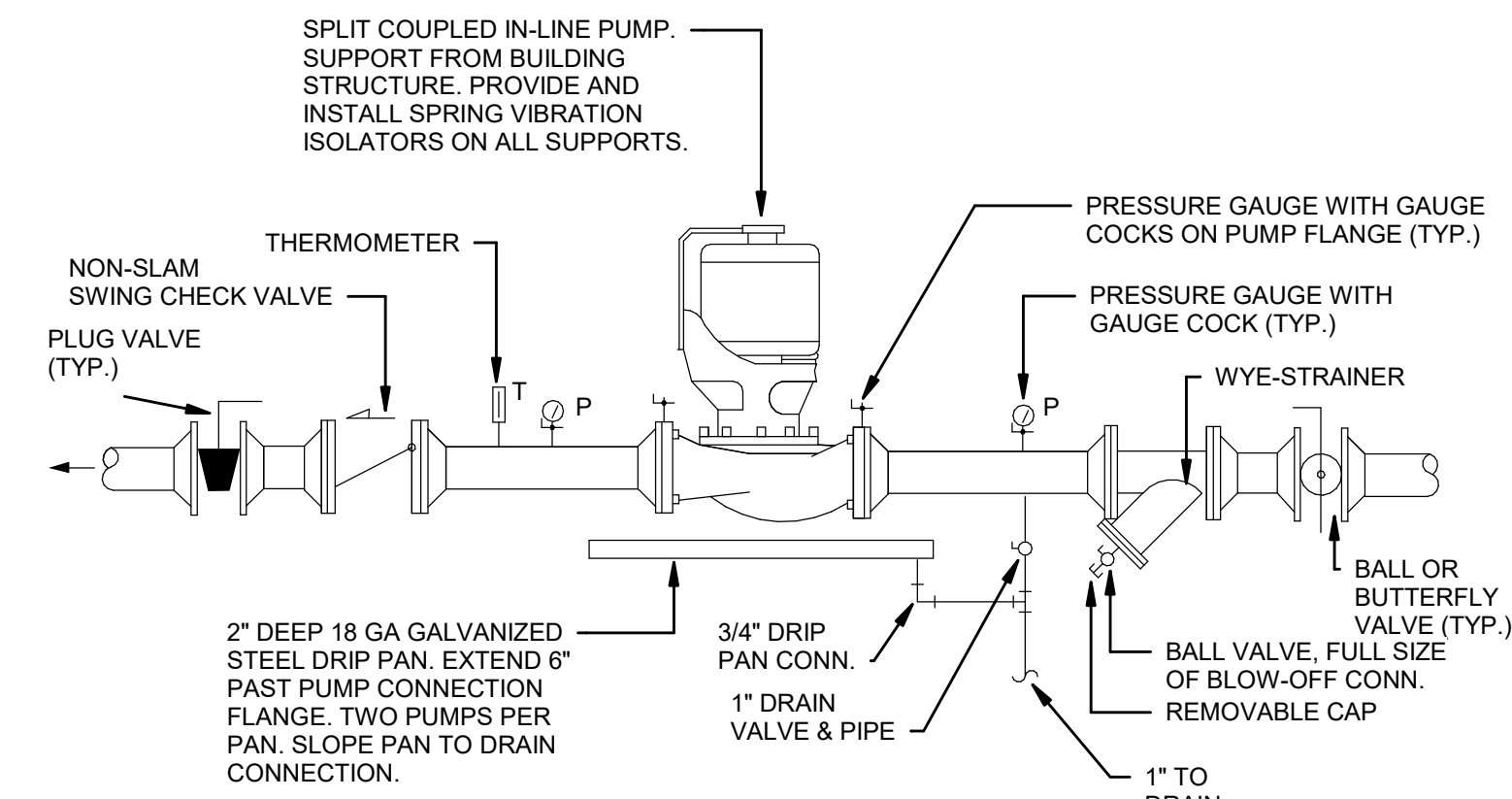
6 TYPICAL AHU/FCU CONDENSATE DRAIN TRAP DETAIL
NO SCALE



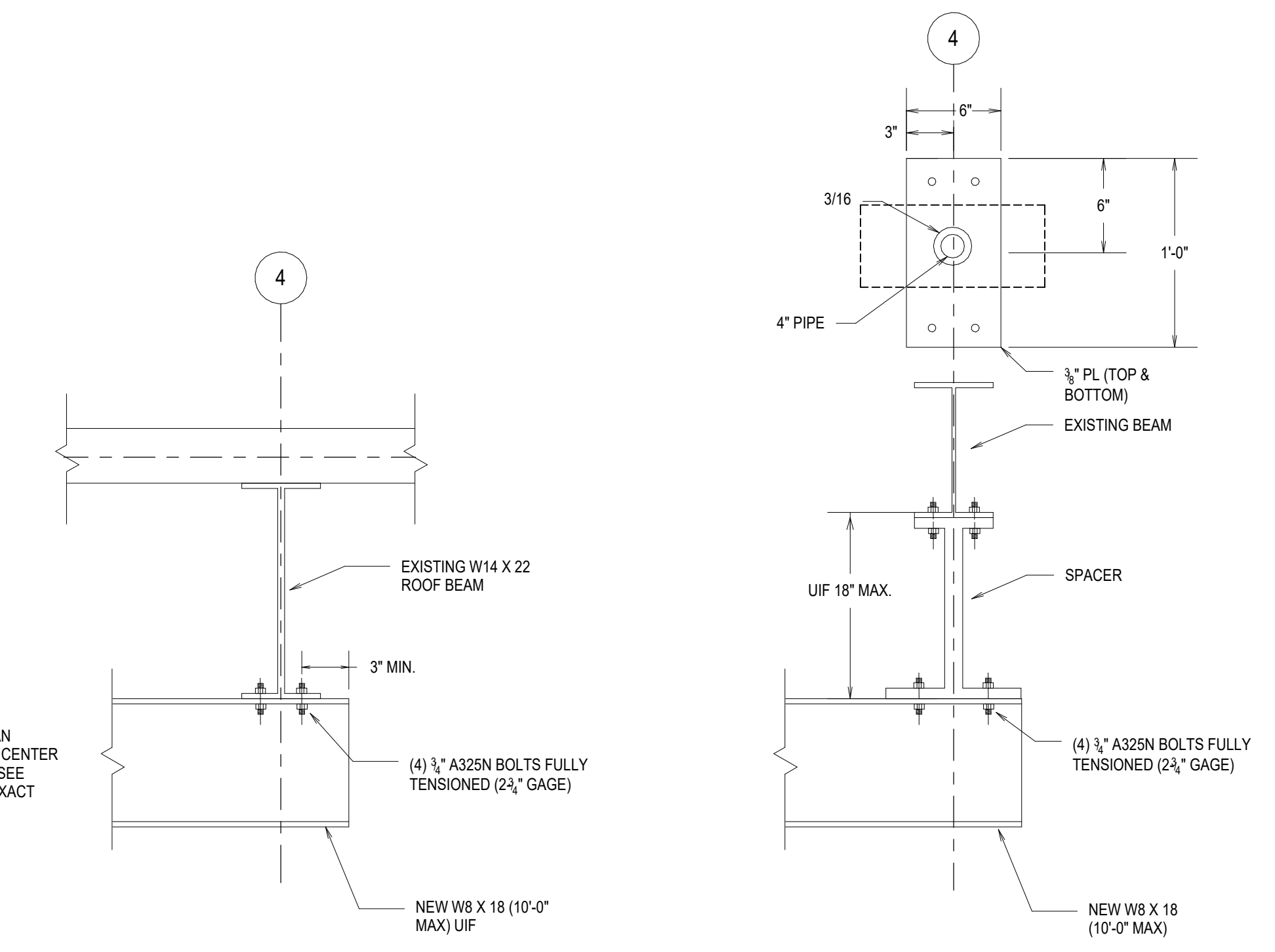
7 CHEMICAL SHOT FEEDER DETAIL
NO SCALE



8 AIR COOLED CHILLER DETAIL
NO SCALE



9 IN-LINE CIRCULATING PUMP DETAIL
NO SCALE



10 FAN SUPPORT & SPACER DETAIL
NO SCALE

NO.	DATE	DESCRIPTION