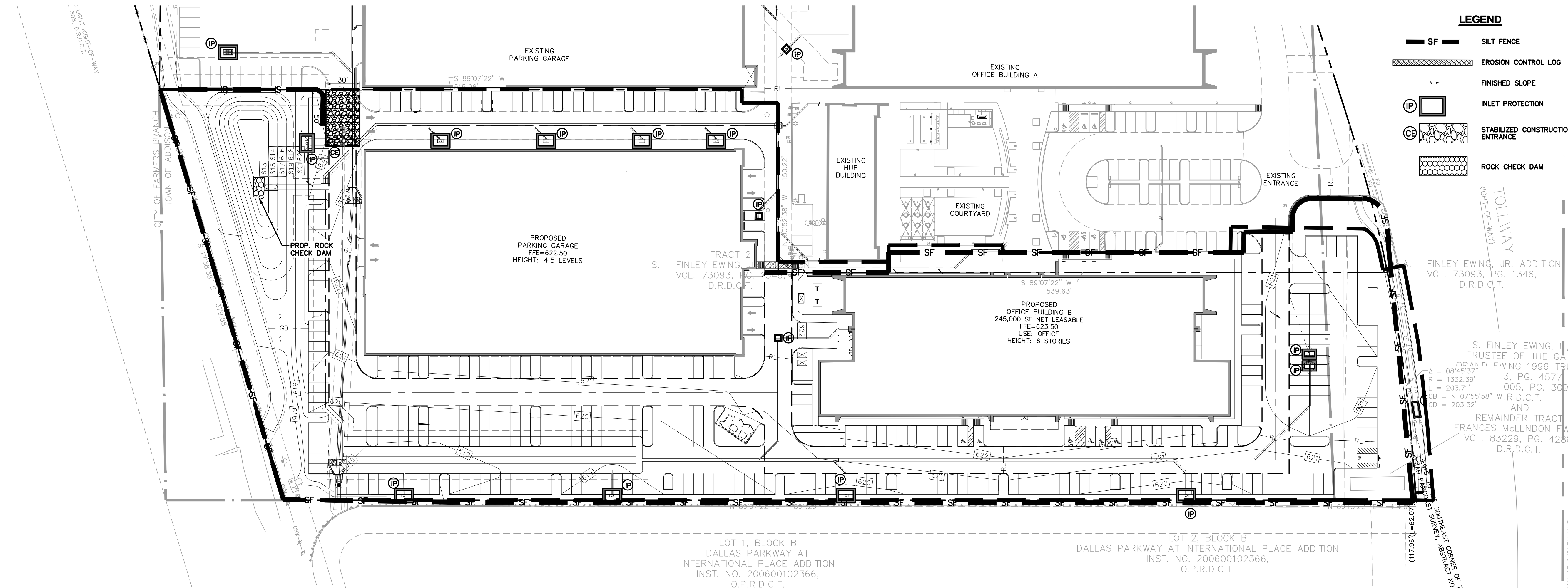
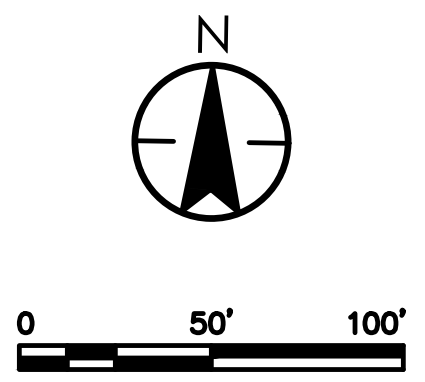


V:\2220\Drawings\222011532\civil\phase_01\drawing\sheet\11532_c2_001_ecd.dwg
20/10/2019 12:34:46 PM by: JHarris, JHarris



CAUTION!!
CONTRACTOR IS TO CONTACT TEXAS ONE-CALL SYSTEM (1-800-245-4545) OR OTHER UTILITY LOCATING SERVICES AT LEAST 48 HOURS PRIOR TO CONSTRUCTION ACTIVITIES. STANTEC IS NOT RESPONSIBLE FOR KNOWING ALL EXISTING UTILITIES IN THE PROJECT AREA NOR FOR DEPICTING THE EXACT LOCATIONS OF UTILITIES ON THESE DRAWINGS.



LEGEND

	SILT FENCE
	EROSION CONTROL LOG
	FINISHED SLOPE
	INLET PROTECTION
	STABILIZED CONSTRUCTION ENTRANCE
	ROCK CHECK DAM

Client/Project	CRAWLEY PARTNERS
By	YJMMDD
Appd.	YJMMDD
Revision	
By	YJMMDD
Appd.	YJMMDD
Issued	

Client/Project
CRAWLEY PARTNERS
CRAWLEY - FOURTEEN555 PHASE 2
14555 DALLAS PARKWAY
TOWN OF ADDISON, DALLAS COUNTY, TEXAS
Title
EROSION & SEDIMENTATION CONTROL PLAN

Permit-Seal

PRELIMINARY
FOR REVIEW ONLY
Not for Construction or Permit Purposes
Stantec
Engineer
JOSHUA A. MILLSAP
P.E. No. 100118 Date 02/12/2019

Project Number: 222011532
File Name: 11532_c2_001_ecd.dwg

RR	JM	JM	19.02.12
Dwn.	Chkd.	Dsgn.	YY.MM.DD

Drawing No. C3.3
Revision Sheet
C3.3

GENERAL NOTES - EROSION CONTROL

- GENERAL CONSTRUCTION NOTES:** REFER TO SHEET C1.1 "GENERAL CONSTRUCTION NOTES, LEGEND AND ABBREVIATIONS" FOR THE GENERAL CONSTRUCTION NOTES FOR THE PROJECT.
- SWP3 COMPLIANCE:** THE CONTRACTOR SHALL BE REQUIRED TO COMPLY WITH THE CONDITIONS OF THE STORM WATER POLLUTION PREVENTION PLAN (SWP3) WHILE CONDUCTING HIS ACTIVITIES ON THIS PROJECT. IN ADDITION TO CONSTRUCTING THOSE ITEMS INDICATED ON THE PLAN SHEETS, COMPLIANCE WITH THE SWP3 INCLUDES CONFORMANCE TO CERTAIN PRACTICES AND PROCEDURES (IDENTIFIED IN THE SWP3) DURING PROJECT CONSTRUCTION. THE SWP3 PLANS AND DOCUMENTS ARE PROVIDED FOR THE SOLE BENEFIT OF THE CONTRACTOR AS A PLANNING TOOL FOR COMPLYING WITH THE ENVIRONMENTAL REGULATIONS OF THIS PROJECT. THE CONTRACTOR IS EXPECTED TO PROVIDE, EXPAND, SUBMIT AND MONITOR A FULL COMPREHENSIVE SWP3 BEYOND WHAT IS HEREIN PROVIDED.
- BMP INSTALLATION:** PRIOR TO COMMENCING GRADING OPERATIONS, THE CONTRACTOR SHALL INSTALL ALL SWP3 MEASURES AND DEVICES AS INDICATED ON THE EROSION & SEDIMENT CONTROL PLAN. ALL SWP3 MEASURES AND DEVICES SHALL BE IN ACCORDANCE WITH SPECIFICATIONS AND DETAILS SHOWN IN THE NORTH CENTRAL TEXAS COUNCIL OF GOVERNMENTS CONSTRUCTION "BEST MANAGEMENT PRACTICES" (BMP) MANUAL, OR AS MODIFIED BY THE CONTRACT DOCUMENTS.
- CLEANING, REPAIR AND MAINTENANCE:** THE CONTRACTOR SHALL REFER TO THE SWP3 FOR SEQUENCING OF CONSTRUCTION, INSTALLATION OF NEW EROSION CONTROL DEVICES AND CLEANING, REPAIR AND MAINTENANCE OF EXISTING EROSION CONTROL DEVICES. THE CONTRACTOR SHALL REVISE, RELOCATE AND/OR ADD DEVICES TO REFLECT ACTUAL SITE CONDITIONS AND TO ACCOMMODATE LOCATIONS FOR CONSTRUCTION TRAILER AREAS, STORAGE AREAS, FUELING AREAS, TOILETS, TRASH RECEPTACLES AND WASHOUT AREAS. ANY ACCIDENTAL RELEASE OF SEDIMENT OR POLLUTANTS FROM THE SITE SHALL BE CLEANED BY THE CONTRACTOR.
- SITE ENTRY/EXIT LOCATIONS:** SITE ENTRY AND EXIT LOCATIONS SHALL BE MAINTAINED BY THE CONTRACTOR IN A CONDITION THAT WILL PREVENT TRACKING OR FLOWING OF SEDIMENT ONTO PUBLIC ROADWAYS. ALL SEDIMENT SPILLED, DROPPED, WASHED OR TRACKED ONTO PUBLIC ROADWAYS MUST BE REMOVED IMMEDIATELY. WHEN WASHING OF VEHICLES IS REQUIRED TO REMOVE SEDIMENT PRIOR TO ENTRANCE TO A PUBLIC ROADWAY, IT SHALL BE DONE ON AN AREA STABILIZED WITH CRUSHED STONE WHICH DRAINS INTO AN APPROVED SEDIMENT BASIN. ALL FINES IMPOSED FOR TRACKING ONTO PUBLIC ROADS SHALL BE PAID BY THE CONTRACTOR.
- PROTECTION OF ADJACENT PROPERTY:** CONTRACTOR SHALL ASSUME FULL LIABILITY FOR DAMAGE TO ADJACENT PROPERTIES AND/OR PUBLIC RIGHT-OF-WAY RESULTING FROM FAILURE TO FULLY IMPLEMENT AND EXECUTE ALL EROSION CONTROL METHODS AND PROCEDURES SHOWN AND NOTED IN THE PLANS AND SWP3.
- RE-VEGETATION:** AT THE COMPLETION OF PAVING AND FINAL GRADING OPERATIONS, ALL DISTURBED AREAS SHALL BE VEGETATED IN ACCORDANCE WITH THE LANDSCAPE ARCHITECTS' PLANS. IN AREAS NOT COVERED BY LANDSCAPE PLAN, THE CONTRACTOR SHALL PROVIDE HYDROMULCH SEEDING AND/OR SODDING FOR ALL DISTURBED AREAS (NOT DESIGNATED TO BE PAVED) IN ACCORDANCE WITH ALL GOVERNING AUTHORITIES' SPECIFICATIONS.
- BMP REMOVAL:** THE CONTRACTOR SHALL REMOVE AND DISPOSE OF ALL SEDIMENT BARRIERS AND INLET PROTECTION AFTER VEGETATION HAS BEEN COMPLETED AND ALL AREAS OF THE SITE HAVE BEEN STABILIZED AND ACCEPTED BY THE GOVERNING AUTHORITIES AND THE DEVELOPER.

NOTE:
INLET PROTECTION ALONG DALLAS PARKWAY SHALL BE REMOVED PRIOR TO INCLEMENT WEATHER.

BENCHMARKS:
REFERENCE BENCHMARK:
TOWN OF ADDISON CONTROL POINT NO. 00A-14 LOCATED 1,730' SOUTH EAST FROM THE INTERSECTION OF LANDMARK PLACE AND LANDMARK BOULEVARD THEN 40.6' WEST OF STREET SIGN, 8.15' NORTH OF CHAINLINK FENCE AND 70.5' EAST OF STREET SIGN. ELEVATION = 623.19'
SITE BENCHMARK:
3-1/4" ALUMINUM DISK IN STAMPED "STANTEC" FOUND LOCATED APPROXIMATELY 1000' WEST FROM THE CENTERLINE OF THE SOUTHBOUND SERVICE ROAD OF THE DALLAS NORTH TOLLWAY, APPROXIMATELY 730' SOUTH FROM THE CENTERLINE OF LANDMARK BOULEVARD. POINT ALSO BEING THE SOUTHWEST CORNER OF SUBJECT TRACT. ELEVATION = 616.60'