

0 30' 60'  
Scale: 1"=30'

**CAUTION!!**  
CONTRACTOR IS TO CONTACT TEXAS ONE-CALL SYSTEM (1-800-245-4545) OR OTHER UTILITY LOCATING SERVICES AT LEAST 48 HOURS PRIOR TO CONSTRUCTION ACTIVITIES. STANTEC IS NOT RESPONSIBLE FOR KNOWING ALL EXISTING UTILITIES IN THE PROJECT AREA NOR FOR DEPICTING THE EXACT LOCATIONS OF UTILITIES ON THESE DRAWINGS.

**LEGEND**

**MEDIUM DUTY PAVEMENT:**  
7" 4,000 PSI REINFORCED CONCRETE PVMT. W/#3 BARS @ 18" O.C.E.W. ON 8" SCARIFIED AND COMPACTED SUBGRADE AT A MINIMUM OF 98% MAXIMUM STANDARD PROCTOR DRY DENSITY (ASTM D 698) WITHIN -1% TO +2% OF OPTIMUM MOISTURE CONTENT.

**DUMPSTER PAVEMENT:**  
7" 4,000 PSI REINFORCED CONCRETE PVMT. W/#3 BARS @ 18" O.C.E.W. ON 8" SCARIFIED AND COMPACTED SUBGRADE AT A MINIMUM OF 98% MAXIMUM STANDARD PROCTOR DRY DENSITY (ASTM D 698) WITHIN -1% TO +2% OF OPTIMUM MOISTURE CONTENT.

**PARKING AREAS:**  
5" 3,600 PSI REINFORCED CONCRETE PVMT. W/#3 BARS @ 18" O.C.E.W. ON 8" SCARIFIED AND COMPACTED SUBGRADE AT A MINIMUM OF 98% MAXIMUM STANDARD PROCTOR DRY DENSITY (ASTM D 698) WITHIN -1% TO +2% OF OPTIMUM MOISTURE CONTENT.

**SIDEWALK & FLATWORK (PRIVATE):**  
4" REINFORCED CONCRETE SIDEWALK FLATWORK (3,000 PSI AT 28 DAYS) W/#3 BARS @ 18" O.C.E.W. ON COMPACTED SUBGRADE TO 98% AT -1% TO +2% OF OPTIMUM MOISTURE CONTENT. (ASTM D 698)

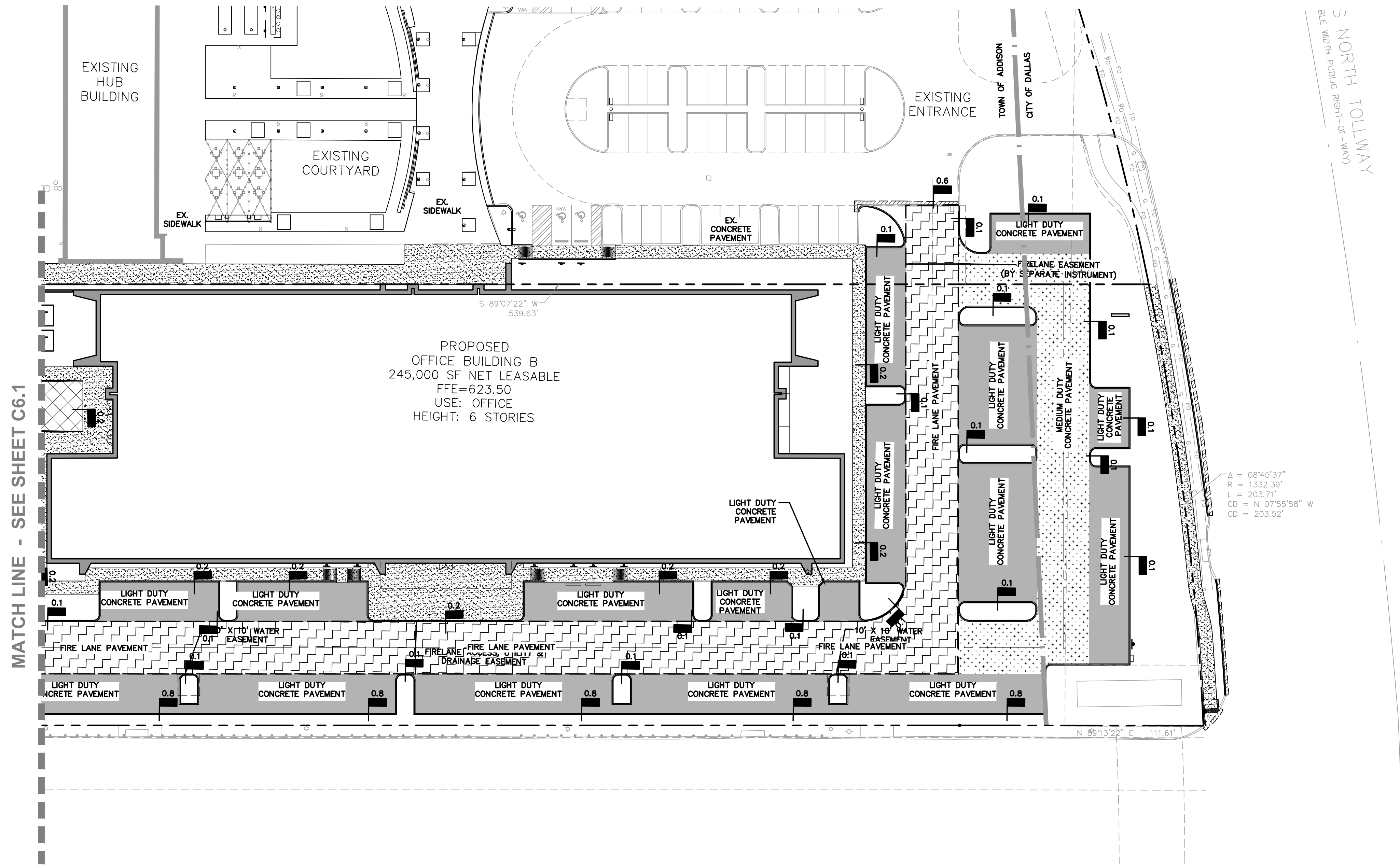
**PUBLIC SIDEWALK (LANDMARK FRONTAGE):**  
6" WIDE, 5" REINFORCED CONCRETE SIDEWALK FLATWORK (3,000 PSI AT 28 DAYS) W/#3 BARS @ 18" O.C.E.W. ON COMPACTED SUBGRADE TO 98% AT -1% TO +2% OF OPTIMUM MOISTURE CONTENT. (ASTM D 698)

**FARMERS BRANCH HIKE & BIKE TRAIL:**  
4" REINFORCED CONCRETE SIDEWALK FLATWORK (3,000 PSI AT 28 DAYS) W/#3 BARS @ 18" O.C.E.W. ON COMPACTED SUBGRADE TO 98% AT -1% TO +2% OF OPTIMUM MOISTURE CONTENT. (ASTM D 698)

**FIRE LANE PAVEMENT:**  
7" 4,000 PSI REINFORCED CONCRETE PVMT. W/#3 BARS @ 18" O.C.E.W. ON 6" LIME STABILIZED SUBGRADE AT A MINIMUM OF 98% MAXIMUM STANDARD PROCTOR DRY DENSITY (ASTM D 698) WITHIN -1% TO +2% OF OPTIMUM MOISTURE CONTENT.

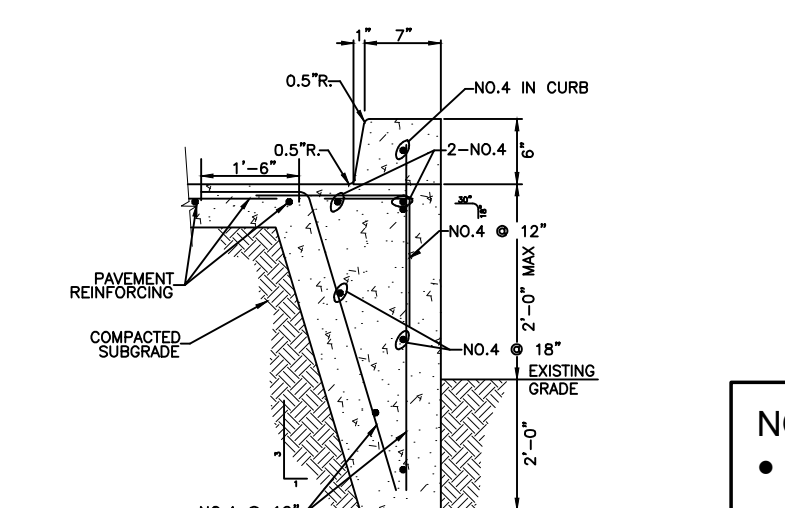
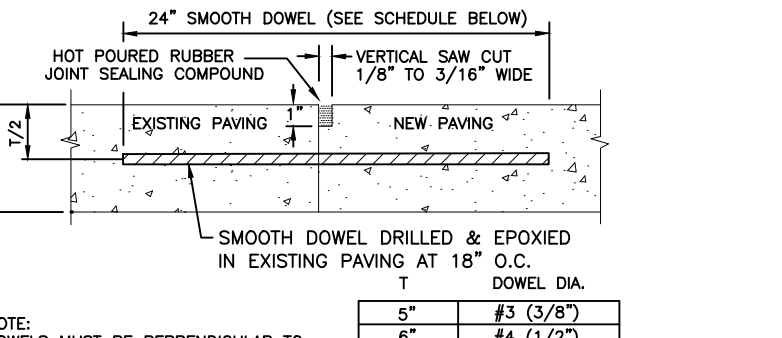
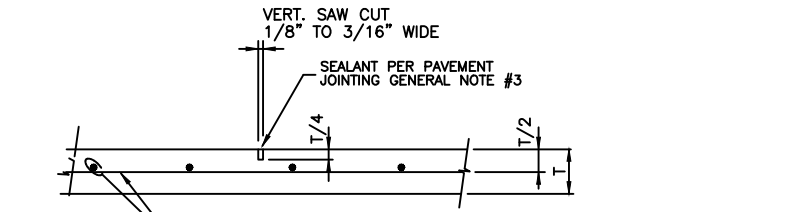
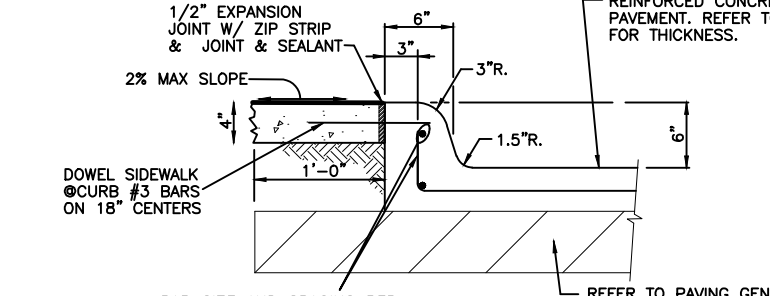
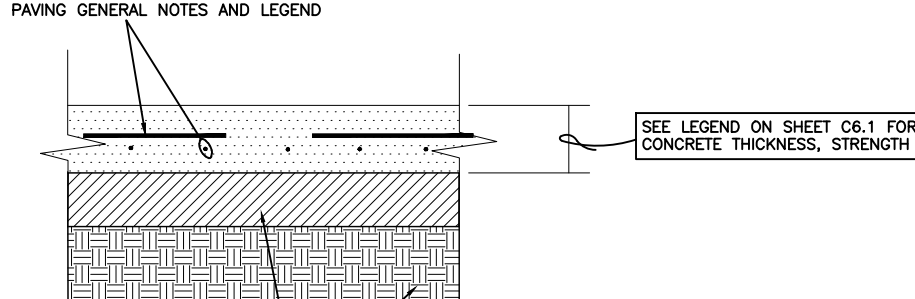
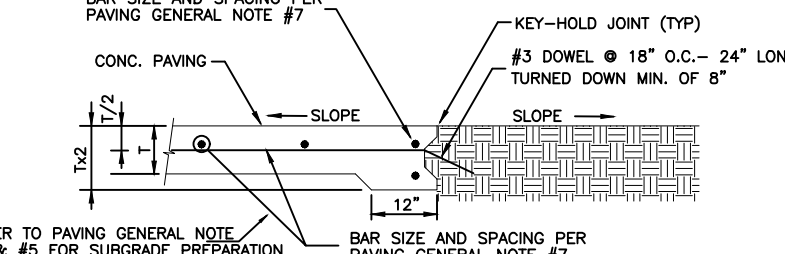
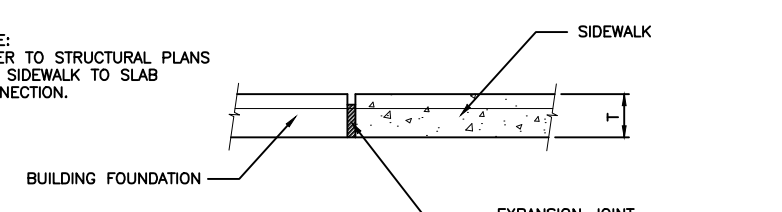
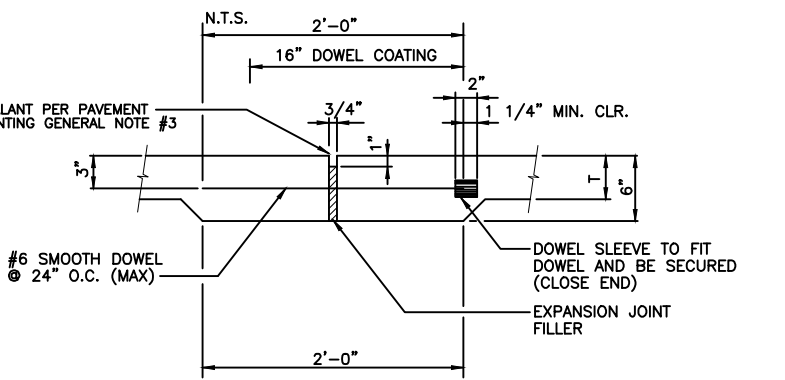
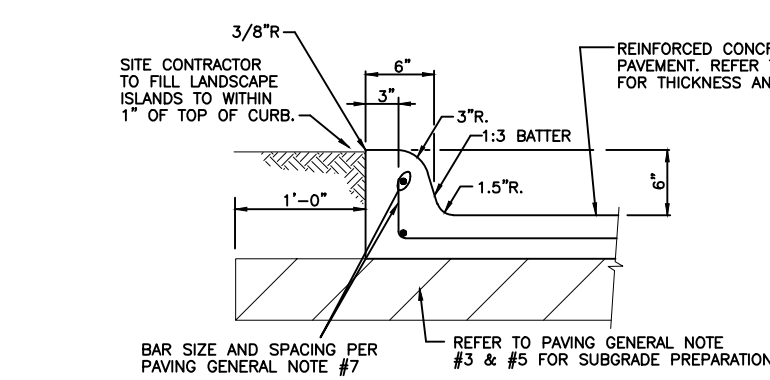
SAWCUT, REMOVE AND DISPOSE OF EXISTING CURB, GUTTER & PAVEMENT

REFER TO SHEET C6.1 - PAVING PLAN FOR SECTION DETAILS.



MATCH LINE - SEE SHEET C6.1

Δ = 08°45'37"  
R = 1332.39'  
L = 203.71'  
CB = N 07°55'58" W  
CD = 203.52'



**LIGHT/MEDIUM/HEAVY DUTY CONCRETE PAVEMENT SECTION**

NOTE:  
• DETAILS PROVIDED ON THIS SHEET ARE NOT FOR USE WITHIN PUBLIC RIGHT-OF-WAY OR STREET EASEMENTS.

NOTE:  
• ALL ON-SITE PAVEMENT IS PRIVATE EXCEPT NOTED FIRE LANES.

**BENCHMARKS:**  
**REFERENCE BENCHMARK:**  
TOWN OF ADDISON CONTROL POINT NO. C0A-14 LOCATED 1,730' SOUTH EAST FROM THE INTERSECTION OF LANDMARK PLACE AND LANDMARK BOULEVARD THEN 40.6' WEST OF STREET SIGN, 8.15' NORTH OF CHAINLINK FENCE AND 70.5' EAST OF STREET SIGN. ELEVATION = 623.19'  
**SITE BENCHMARK:**  
3-1/4" ALUMINUM DISK IN STAMPED "STANTEC" FOUND LOCATED APPROXIMATELY 1000' WEST FROM THE CENTERLINE OF THE SOUTHBOUND SERVICE ROAD OF THE DALLAS NORTH TOLLWAY, APPROXIMATELY 730' SOUTH FROM THE CENTERLINE OF LANDMARK BOULEVARD. POINT ALSO BEING THE SOUTHWEST CORNER OF SUBJECT TRACT. ELEVATION = 616.60'

Revision	By	App'd.	Y/M/DD

Client/Project  
CRAWLEY PARTNERS  
CRAWLEY - FOURTEEN555 PHASE 2  
14555 DALLAS PARKWAY  
TOWN OF ADDISON, DALLAS COUNTY, TEXAS  
Title  
PAVING PLAN

Permit-Seal

**PRELIMINARY**  
**FOR REVIEW ONLY**  
Not for Construction or Permit Purposes

**Stantec**  
JOSHUA A. MULLSAP  
P.E. No. 100118 Date: 02/12/2019

Project Number: 222011532  
File Name: 11532\_c2\_01\_pv.dwg

RR	JM	JM	19.02.12
Dwn.	Chkd.	Dsgn.	YY.MM.DD

Drawing No. C6.2  
Revision Sheet