

LEGEND

ELECTRIC — OHE	48" RCP	MISC.
⊕ LIGHT POLE	EX. STORM SEWER	— CHAIN LINK FENCE
⊕ POWER POLE	— WOOD FENCE	— EXISTING ASPHALT
— GUY WIRE	— EXISTING DIRT OR GRAVEL	— EX. CONCRETE
TELEPHONE — T	— EX. CONCRETE	— TREE/TREE LINE
⊕ TELEPHONE MANHOLE	— EX. CONCRETE	— EXISTING CURB
⊕ TELEPHONE PEDESTAL	— PROP. EDGE OF PAVEMENT NO CURB	— EX. PROPERTY LINE
⊕ TELEPHONE SIGN	— EX. PROPERTY LINE	— PROP. CENTERLINE
GAS — G	— PROP. R.O.W.	— PROP. INLET
⊕ GAS METER	— T.P.	— TOP OF PAVEMENT
⊕ GAS SIGN	— T.C.	— TOP OF CURB
LAND USE	— C.R.	— CURB RETURN
⊕ RAILROAD SIGN	— EX. G	— EXISTING GUTTER
⊕ SIGN	⊕ B-20	— BORING LOCATION
SURVEY		
⊕ FOUND IRON ROD		
⊕ TEMP BENCHMARK		
WASTEWATER — WW		
⊕ WASTEWATER MANHOLE		
⊕ CLEANOUT		
WATER — W		
⊕ FIRE HYDRANT		
⊕ METER		
⊕ WATER VALVE		

BENCHMARKS:

BM#1
"I" CUT AT CENTER BACK OF CURB OF INLET, 190 FEET SOUTH FROM THE CENTERLINE INTERSECTION OF ADDISON CIRCLE, WEST SIDE OF QUORUM DRIVE.
ELEV. 621.89

BM#2
"I" CUT AT CENTER BACK OF CURB OF INLET, 200 FEET NORTH FROM THE CENTERLINE INTERSECTION OF ADDISON CIRCLE, WEST SIDE OF QUORUM DRIVE.
ELEV. 621.68

ISSUED FOR CONSTRUCTION MARCH 28, 1996

THE SEAL APPEARING ON THIS DOCUMENT WAS AUTHORIZED BY KENNETH A. ROBERTS, P.E. 55446 ON MARCH 28, 1996.

3-28-96

PAVING PLAN						
ROUNDABOUT - QUORUM DRIVE & ADDISON CIRCLE						
ADDISON CIRCLE						
PHASE I PUBLIC INFRASTRUCTURE						
TOWN OF ADDISON, TEXAS						
Hull-Zollars, Inc./Engineering/Architecture						
Dallas, Fort Worth, Houston, El Paso, Phoenix, Tustin, Ontario, San Clemente						
DESIGN	DRAWN	APPR.	SCALE	DATE	PROJECT NO.	NO.
HZI	HZI	KAR	1"=20'	JAN 96	1822-04	20 137

- NOTES:**
- SEE DEMOLITION PLAN FOR PAVEMENT REMOVAL LIMITS.
 - SEE SURFACE PATTERNING PLANS FOR BRICK PATTERNS AND SLOPES.
 - POUR SIDEWALK AROUND NOTED LEAVEOUTS PER LOCATIONS ON STREETScape PLANS.
 - SEE PROFILES FOR GRADES ON ROUNDABOUT.
 - SEE GEOMETRIC PLAN FOR STATIONS AND OFFSETS OF PC AND PT POINTS AND RADIAL BAND ANGLES.

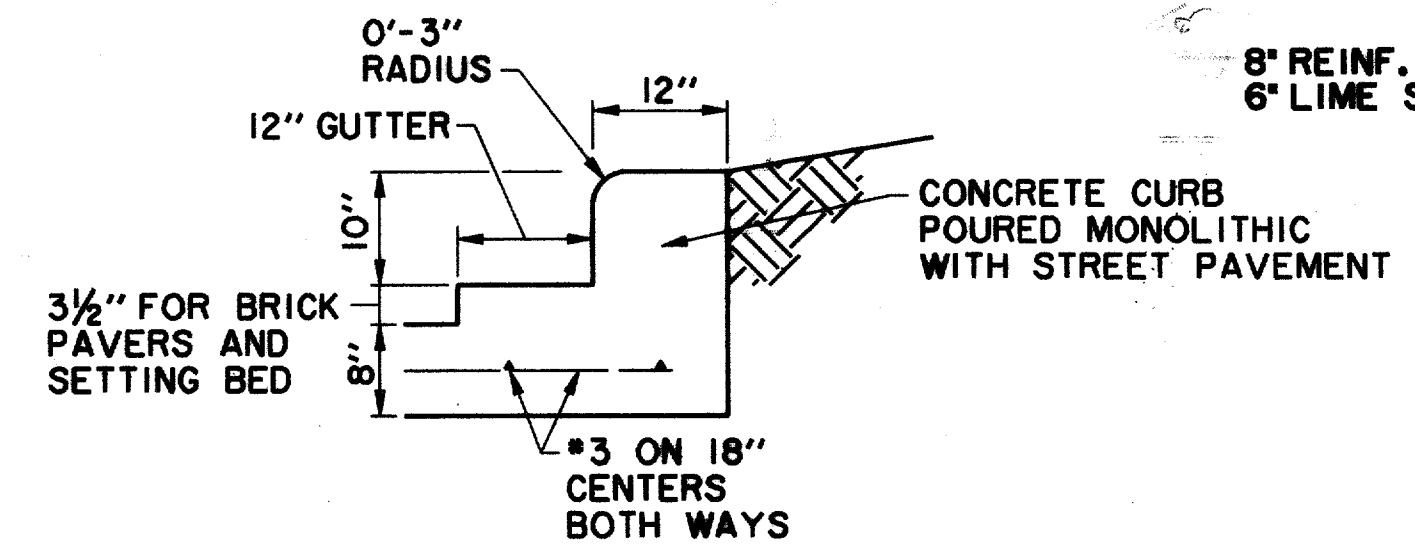
RECORD DRAWING 5/1/98

REVISED SIDEWALK EAST SIDE OF ROUNDABOUT 11/15/96

REVISED INTERIOR RADIUS TO 66.5 FEET. ADDED INTERIOR CURB DETAIL. DELETED RADIAL DROP SLAB BANDS 7/29/96

REVISED STEPS AT BUILDING 'A' 5/13/96

NOTE: SIDEWALK BEYOND RIGHT OF WAY TO BE CONSTRUCTED BY OTHERS WITH THE ADDISON CIRCLE APARTMENTS PRIVATE DEVELOPMENT. CONTRACTOR SHALL COORDINATE INTERFACE IN THE FIELD. SEE SIDEWALK DETAILS IN THIS PLAN SET.



SECTION F-F
10" HIGH x 12" WIDE - CONCRETE CURB

FOR INTERIOR CURB ON ROUNDABOUT ONLY
N.T.S.

