

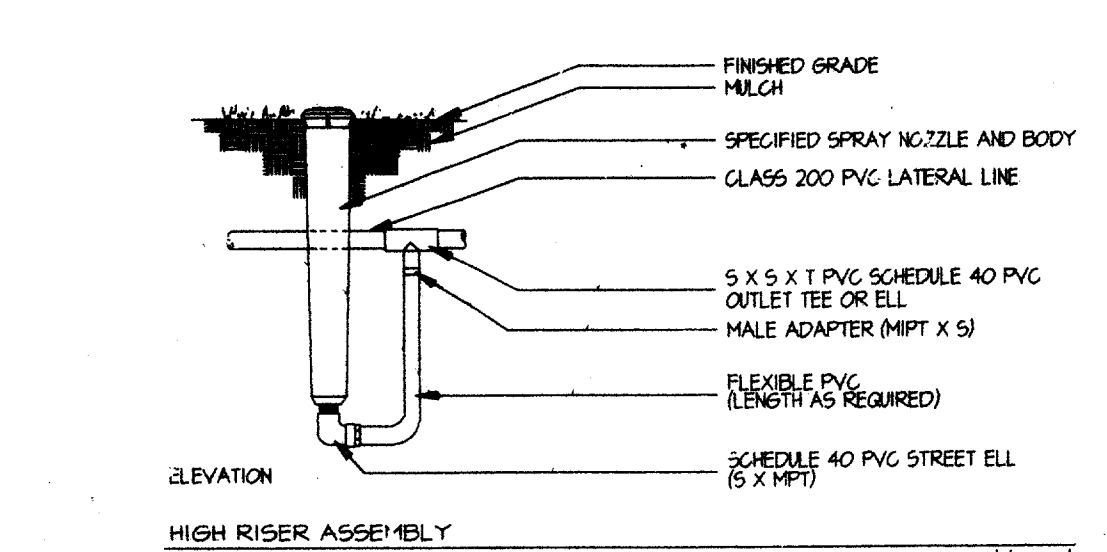
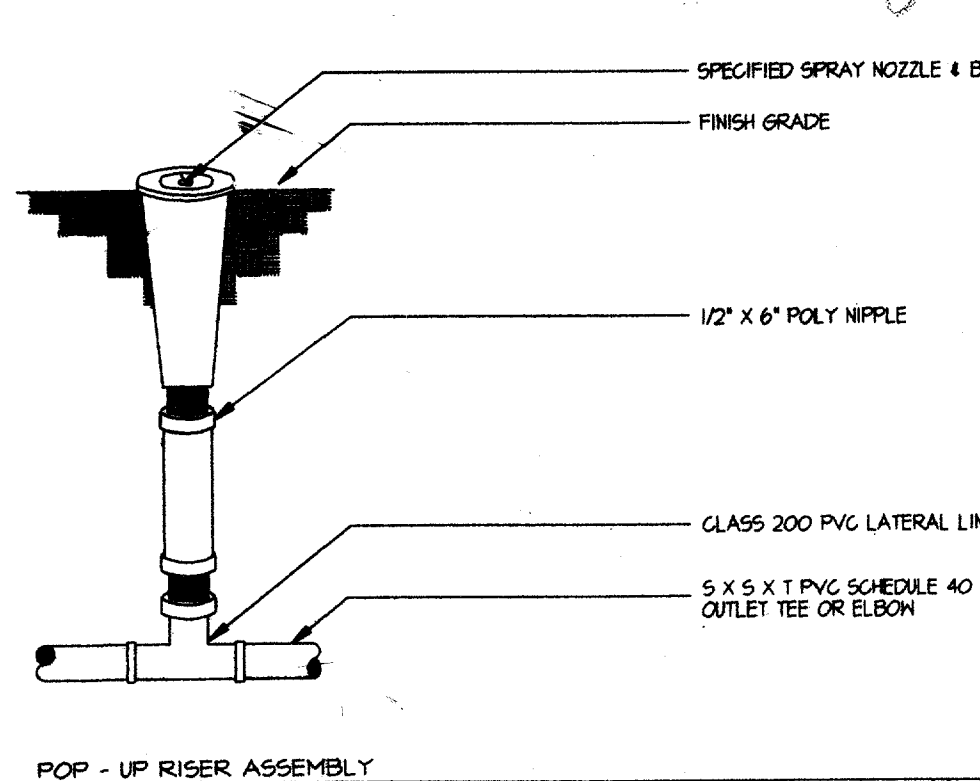
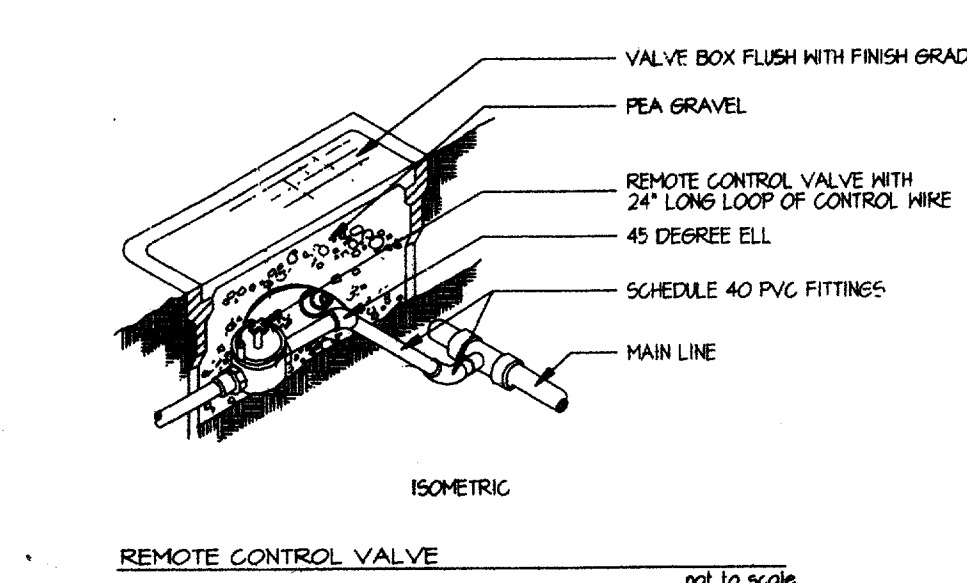
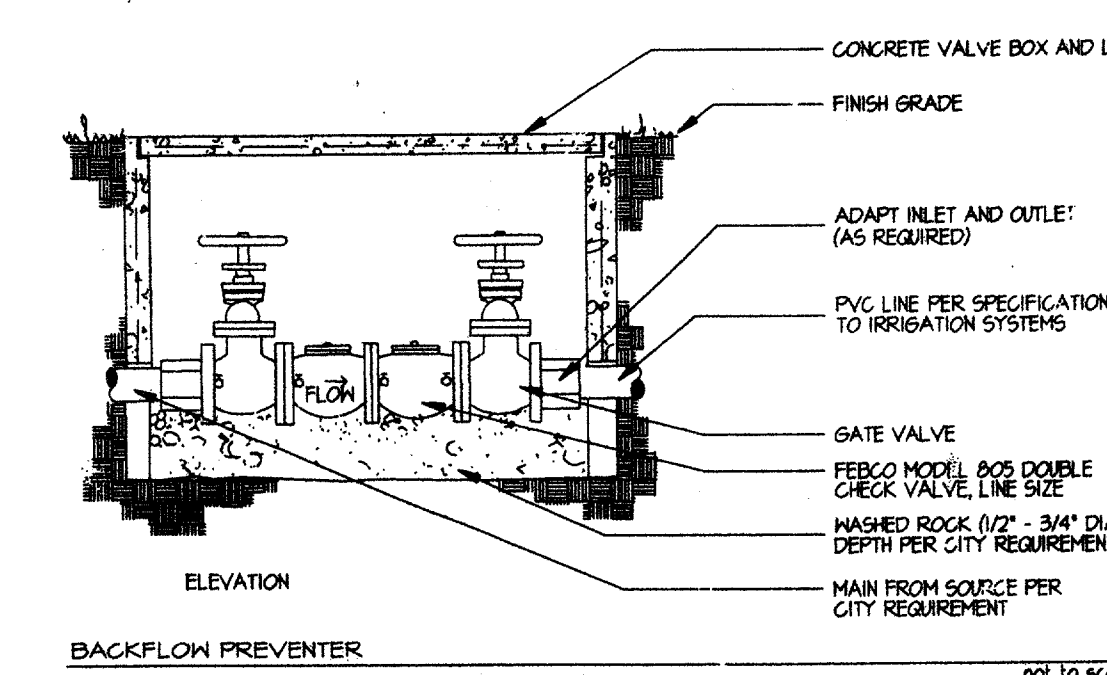
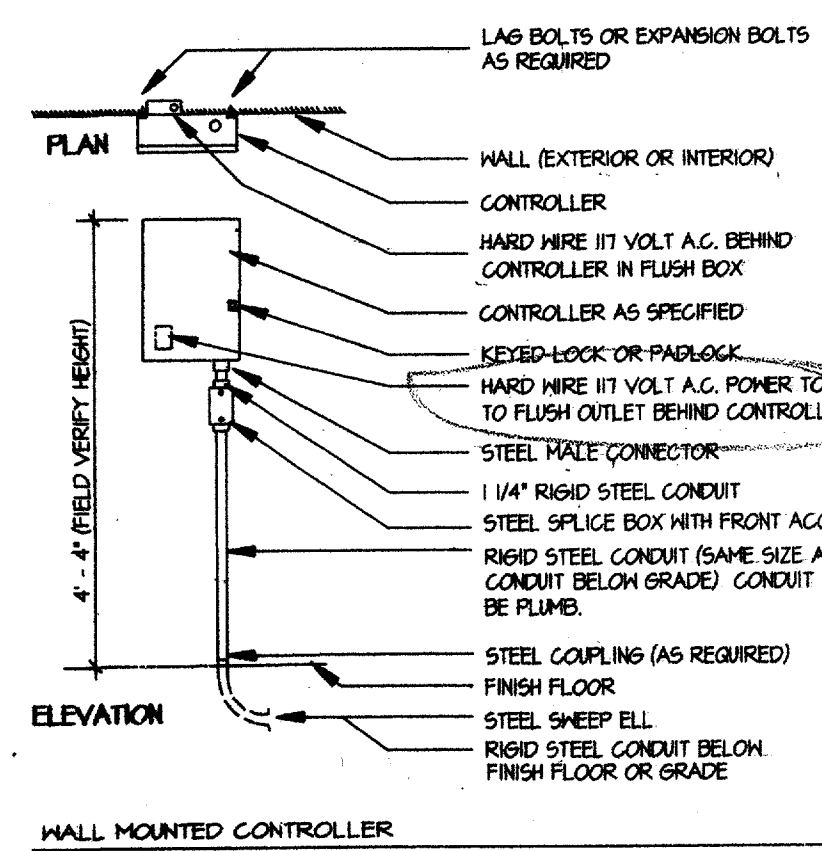
IRRIGATION LEGEND

- WATER GEAR DRIVEN ROTOR MODEL 1-20, NOZZEL # 7 PART CIRCLE
- WATER GEAR DRIVEN ROTOR MODEL 1-20, NOZZEL # 4 FULL CIRCLE
- TORO POP-UP LOW ANGLE SPRAY MPR SERIES NO. 12, FULL HALF, & QUARTER ON A NO. 310Z 4P BODY.
- ▲ TORO POP-UP LOW ANGLE SHRUB SPRAY MPR SERIES NO. 8, FULL HALF, & QUARTER ON A NO. 310Z 12P BODY.
- TORO POP-UP LAWN SPRAY MPR SERIES NO. 15, FC, FULL HALF, & QUARTER ON A NO. 310Z 4P BODY.
- ☒ HEATHERMATIC QUICK COUPLER VALVE FV144L
- ⊕ HEATHERMATIC 1000 OR SERIES WITH FLOW CONTROL, ELECTRIC REMOTE CONTROL VALVE
- SCHEDULE 40 PVC MAINLINE
- CLASS 200 PVC LATERAL LINE EXCEPT 1/2 INCH DIAMETER SHALL BE CLASS 315. NOTE: ALL DIRECTLY BURIED LINE BENEATH PAVING SHALL BE SCHEDULE 40 PVC
- ⊕ GPM THROUGH VALVE
- ⊕ VALVE SEQUENCING NUMBER
- ⊕ SIZE OF VALVE
- ⊕ MANUAL GATE VALVE-LINE SIZE
- ⊕ ELECTRIC CONTROLLER MANUFACTURE AND MODEL AS SHOWN ON PLAN
- ⊕ 6" SCHEDULE 40 PVC SLEEVE
- ⊕ GALVANIZED STEEL SLEEVES(SIZE AS NOTED)
- ⊕ FREEZE SENSOR-MINI-GLIK MODEL 401
- ⊕ MOISTURE SENSOR-PENN
- ⊕ IRRIGATION WATER METER & TAPING SLEEVE (BY GENERAL CONTRACTOR)
- ⊕ FERCO DOUBLE CHECK VALVE BODY IN FLUSH CONCRETE VALVE BOX(BELOW GRADE)

anytime?

The GC will decide who provides. Unless it's possible by owner, don't dictate

IRRIGATION DETAILS



IRRIGATION NOTES

- LINE LAYOUT IS DIAGRAMMATIC-ADJUST HEAD AND LINE LOCATIONS ON SITE TO ACCOMMODATE EXISTING JOB CONDITIONS AND TO ACHIEVE COMPLETE COVERAGE
- ALL MAIN LINE PIPING SHALL BE BURIED TO HAVE A MINIMUM COVER OF 18". ALL LATERAL PIPING DOWNSTREAM OF THE MAIN LINE SHALL BURIED TO HAVE A MINIMUM COVER OF 12".
- ALL MAINS ARE TO DRAIN TO LOW POINTS AT A MINIMUM ONE HALF(1/2%) PERCENT SLOPE. AT LOW POINTS, INSTALL GATE VALVE TO FACILITATE DRAINAGE OF SYSTEM DURING FREEZING TEMPERATURES
- CONTRACTOR SHALL INSTALL AUTOMATIC DRAIN VALVES AT LOW POINTS IN THE IRRIGATION LINES AS REQUIRED TO PREVENT FREEZE DAMAGE.
- ALL VALVE BOXES SHALL BE BLACK IN COLOR(BODY AND LID). SIZES SHALL BE TEN(10) INCHES BY FOURTEEN(14) INCHES (RECTANGULAR) FOR REMOTE CONTROL VALVES AND NINE(9) INCHES(ROUND) FOR GATE AND QUICK COUPLER VALVES.
- CONTRACTOR SHALL MAKE MINOR ADJUSTMENTS TO SYSTEM LAYOUT IN FIELD TO INSURE POSITIVE DRAINAGE OF LATERAL LINES AND MAIN LINES.
- CONTRACTOR SHALL NOTIFY THE LANDSCAPE ARCHITECT, IF THE STATIC PRESSURE IS LESS THAN THE DESIGN STATIC PRESSURE OF 60 PSI.
- ALL WIRING FROM THE IRRIGATION CONTROLLER TO THE REMOTE CONTROL VALVES SHALL BE UP-1/4" DIRECT BURIAL CABLE. ALL WIRE SPLICES SHALL BE MADE IN VALVE BOXES ONLY USING RAINBOW SHARP-TITE CONNECTORS AND SEALANT. PROVIDE SLEEVES FOR WIRE UNDER PAVED AREAS AS REQUIRED.
- ALL IRRIGATION INSTALLATION SHALL CONFORM TO THE LOCAL CODES AND REGULATIONS

Addison spec. Prior to beginning work!

TOWN OF ADDISON IRRIGATION NOTES

- PLACE 4 EXTRA 14 GA WIRES (DIFFERENT COLORS) FROM CONTROLLER TO A VALVE BOX ADJACENT TO DOUBLE CHECK VALVE ASSEMBLY FOR CENTRAL CONTROL INSTALLATION AT A LATER DATE VERIFY WITH THE TOWN OF ADDISON'S CONSTRUCTION REPRESENTATIVE
- USE CLEAN AND APPROVED LOAM TO BACKFILL ALL PIPE TO A DEPTH OF AT LEAST 6" ABOVE TOP OF PIPE. ALL HEADS AND BOXES ARE TO BE BACKFILLED TO GRADE WITH LOAM. REMAINDER OF TRENCH MAY BE FILLED USING CLEAN AND APPROVED SOIL. NO ROCKS GREATER THAN 1" ARE ALLOWED. COMPACT TRENCHES TO ALLEVIATE SETTLING.
- USE APPROPRIATE AND APPROVED PVC SOLVENT. AVOID EXCESSIVE USE AND WIPE ALL JOINTS AND FITTINGS CLEAN.
- THE INSTALLER IS RESPONSIBLE FOR RESETTING HEAD AND JDR BOX HEIGHT DUE TO SETTLING. CONTRACTOR MUST OBTAIN A WORKMANSHIP WARRANTY FOR ONE (1) YEAR FROM DATE OF COMPLETION.
- ALL WORK IS TO BE ACCOMPLISHED BY OR DIRECTLY SUPERVISED BY AN ON-SITE IRRIGATOR LICENSED BY THE STATE OF TEXAS.
- PRIOR TO ANY BACKFILLING OF TRENCHES, AN INSPECTION BY THE TOWN OF ADDISON'S REPRESENTATIVE MUST TAKE PLACE AND IMPLEMENT ANY NECESSARY CHANGES.

how?

conducted?

Newman, Jackson, Bieberstein, Inc.
 Landscape Architecture Urban and Development Planning
 12710 Colt Road, Suite 210 Dallas, Texas (214) 293-2098 Fax (214) 293-2022

Details

ADDISON CIRCLE

PHASE 1

TOWN OF ADDISON, TEXAS

Hutt-Zollars, Inc./Engineering/Architecture
 Dallas, Fort Worth, Houston, El Paso, Phoenix, Tulsa, Ontario, San Clemente

DESIGN	DRAWN	APPR	SCALE	DATE	PROJECT NO.	NO.
PS	TS	GN		12-4-95	0030-95	137

RECORD DRAWING 5/1/98
 Issued for Construction
 March 28, 1996