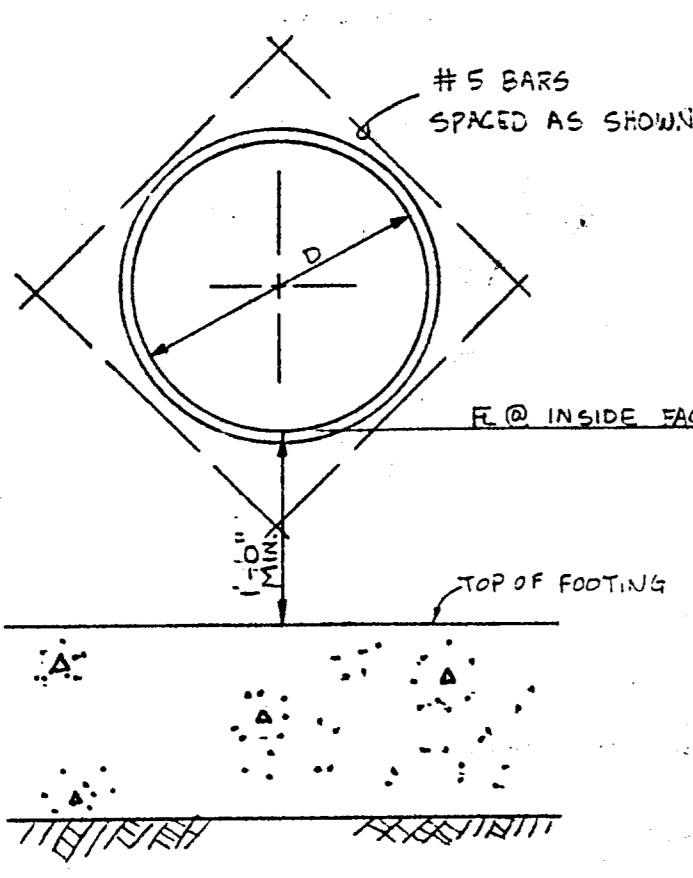
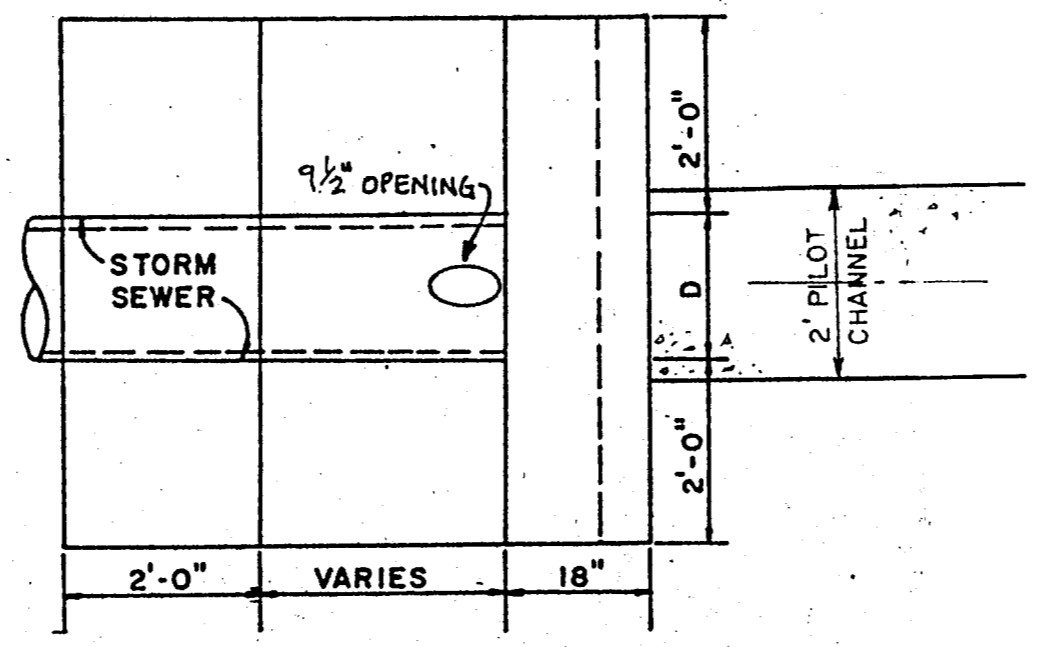
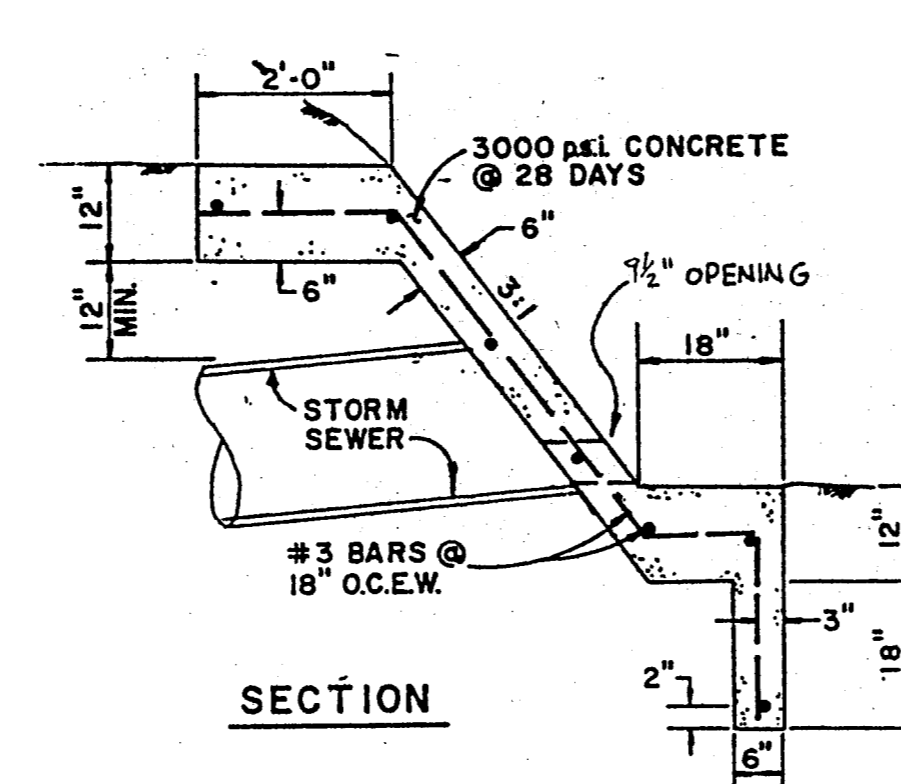


PAINING:

- After erection, the railing shall be painted with one prime coat of red lead paint and two field coats of black aluminum paint according to the NCTCOG Standard Specifications for Public Works Construction, Division B, Section 9, "Painting".



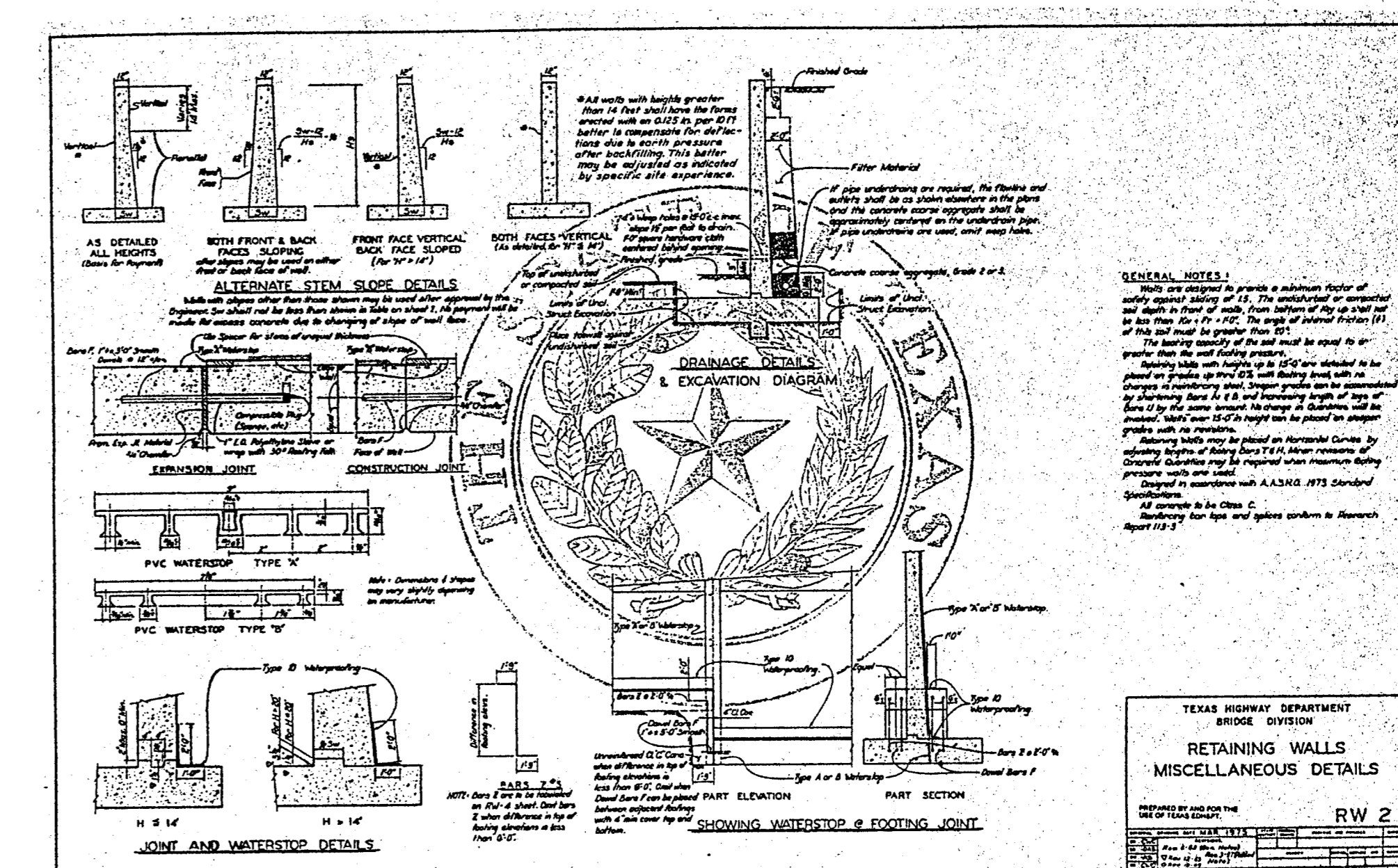
Note: This detail is for the 4" x 18" x 24" storm sewer opening in the retaining wall.



SLOPED HEADWALL DETAIL W/10" OPENING
N.T.S.

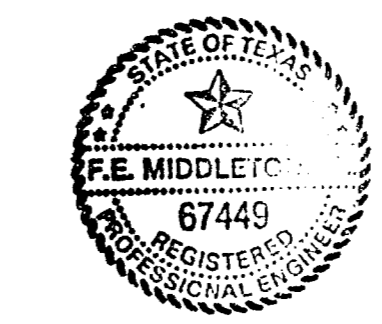
PROPERTIES		REINFORCING STEEL FOR 32'-0" PANEL (DESIGN A)												QUANTITIES FOR 32'-0" PANEL			
WALL DIMENSIONS	MIN. REIN.	NO. BARS	AREA	NO. BARS	AREA	NO. BARS	AREA	NO. BARS	AREA	NO. BARS	AREA	NO. BARS	AREA	NO. BARS	AREA	NO. BARS	AREA
32'-0" x 10'-0"	1.5"	12	1.10	12	1.10	12	1.10	12	1.10	12	1.10	12	1.10	12	1.10	12	1.10

GENERAL NOTES:
 1. Reinforcing steel shall be furnished in accordance with the provisions of the Texas Standard Specifications for Highway Construction, Section 202, "Reinforcing Steel".
 2. All reinforcing steel shall be furnished in accordance with the provisions of the Texas Standard Specifications for Highway Construction, Section 202, "Reinforcing Steel".
 3. All reinforcing steel shall be furnished in accordance with the provisions of the Texas Standard Specifications for Highway Construction, Section 202, "Reinforcing Steel".



Winkelmann & Associates, Inc. hereby certifies that this plan, to the best of our knowledge is "As Built." All modifications from the originally approved construction documents have been made as per information provided by the contractor. Winkelmann & Associates, Inc. does not certify as to the correctness or quality of construction as no field inspection was performed.

F.E. Middle
 WINKELMANN & ASSOCIATES, INC.
 DATE: 10-14-98



BENCHMARK NO. 1:
 CUT IN CURB LOCATED ON NORTHEAST CORNER OF AN INLET ON THE WEST SIDE OF MIDWAY ROAD APPROXIMATELY 911 FEET SOUTH OF BELTWAY DRIVE.
 ELEV. = 615.72

BENCHMARK NO. 2:
 CUT IN CURB LOCATED ON SOUTH SIDE OF BELTWAY DRIVE APPROXIMATELY 627 FEET EAST OF MIDWAY ROAD.
 ELEV. = 631.63

Scale:	Date:	12/8/93
Designed By:	F.E.M.	
Drawn By:	L.H.N.	
Checked By:	F.E.M.	
File:	MISCDET.dwg	
Project No.:	15602.01	

Winkelmann & Associates, Inc.
 CONSULTING CIVIL ENGINEERS & SURVEYORS
 1200 W. BELTWAY DRIVE, SUITE 200
 DALLAS, TEXAS 75235
 (214) 495-7000 FAX

THOMAS L. CHEROKEE SURVEY, ABSTRACT NO. 100, COUNTY, TEXAS
 CITY OF ARLINGTON, DALLAS COUNTY, TEXAS
 CLIENT: MCCUTCHIN PROPERTIES EQUO, SUITE 200 14802 DALLAS, TEXAS 75230

MISCELLANEOUS CIVIL DETAILS